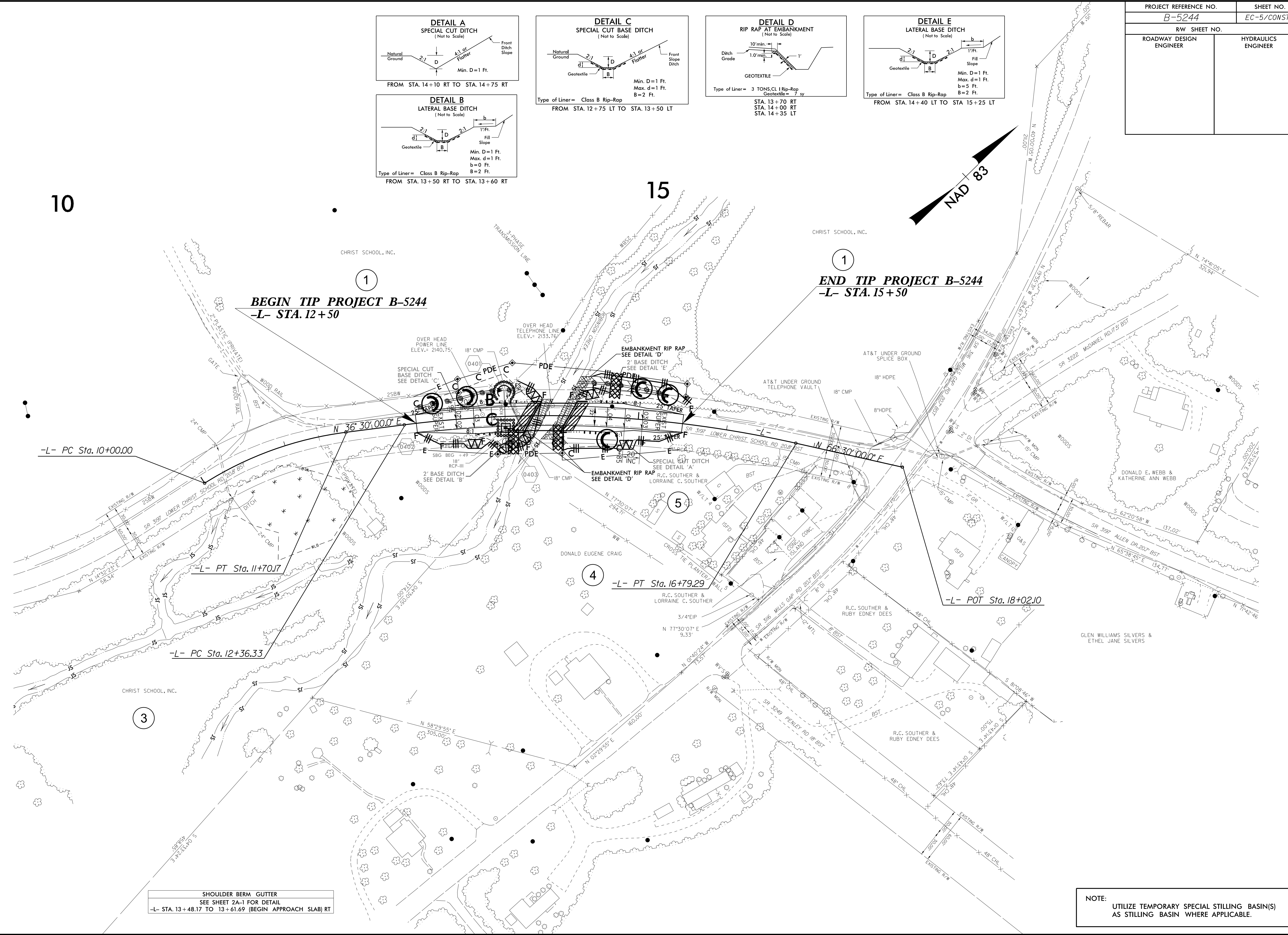
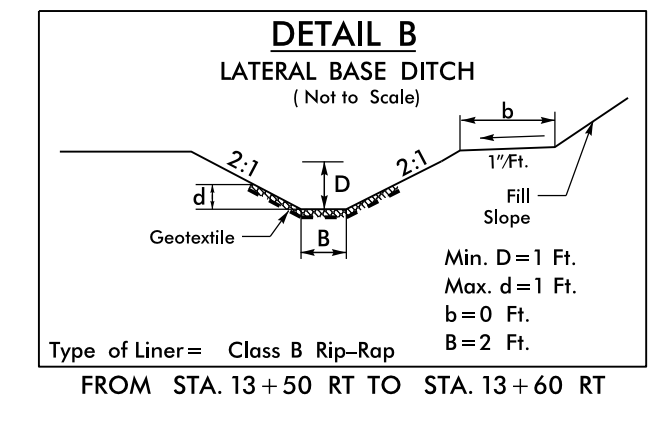
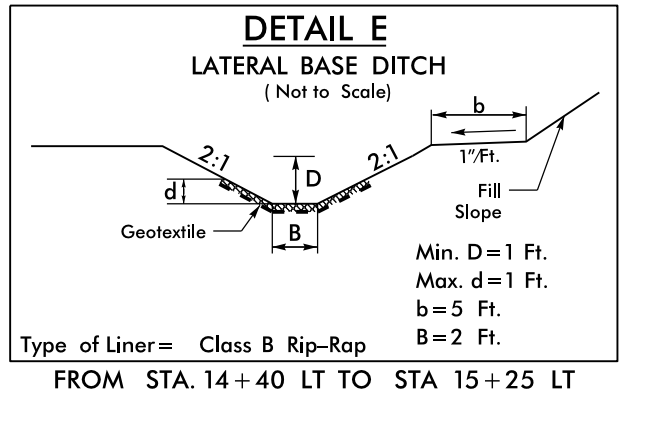
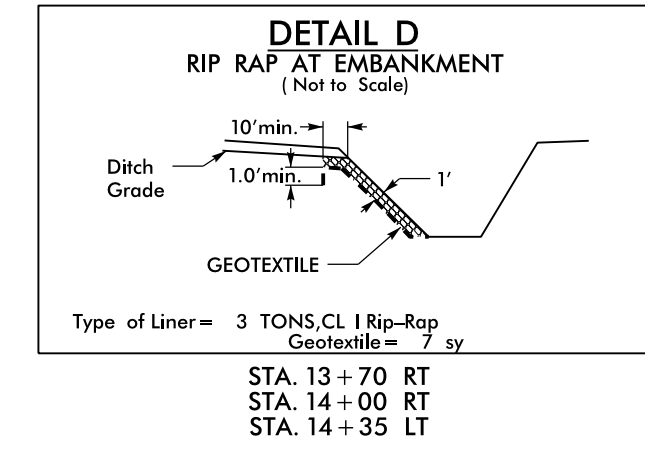
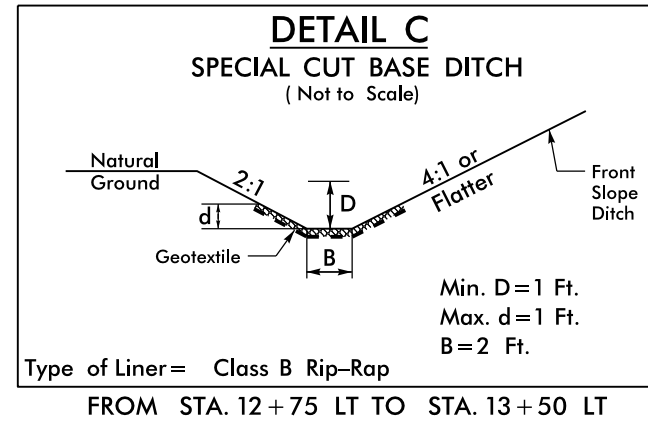
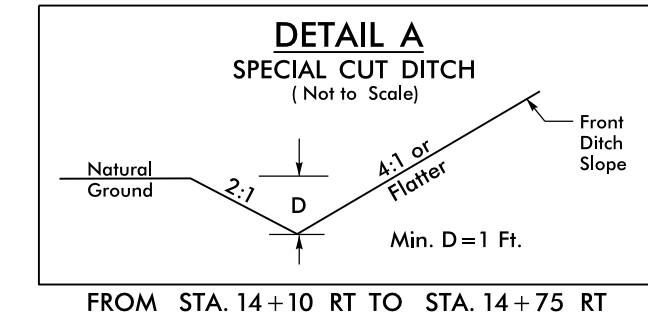


PROJECT REFERENCE NO. B-5244	SHEET NO. EC-5/CONST.4
RW SHEET NO.	
ROADWAY DESIGN ENGINEER	HYDRAULICS ENGINEER



SHOULDER BERM GUTTER
SEE SHEET 2A-1 FOR DETAIL
-L- STA. 13+48.17 TO 13+61.69 (BEGIN APPROACH SLAB) RT

NOTE:
UTILIZE TEMPORARY SPECIAL STILLING BASIN(S)
AS STILLING BASIN WHERE APPLICABLE.

8/17/99
14-OCT-2015 08:44
R:\Documents\B-5244_EC-psht4.dgn
REVISIONS
1
2
3
4
5
6
7
8
9
10
11
12
13
14
15
16
17
18
19
20
21
22
23
24
25
26
27
28
29
30
31
32
33
34
35
36
37
38
39
40
41
42
43
44
45
46
47
48
49
50
51
52
53
54
55
56
57
58
59
60
61
62
63
64
65
66
67
68
69
70
71
72
73
74
75
76
77
78
79
80
81
82
83
84
85
86
87
88
89
90
91
92
93
94
95
96
97
98
99
100