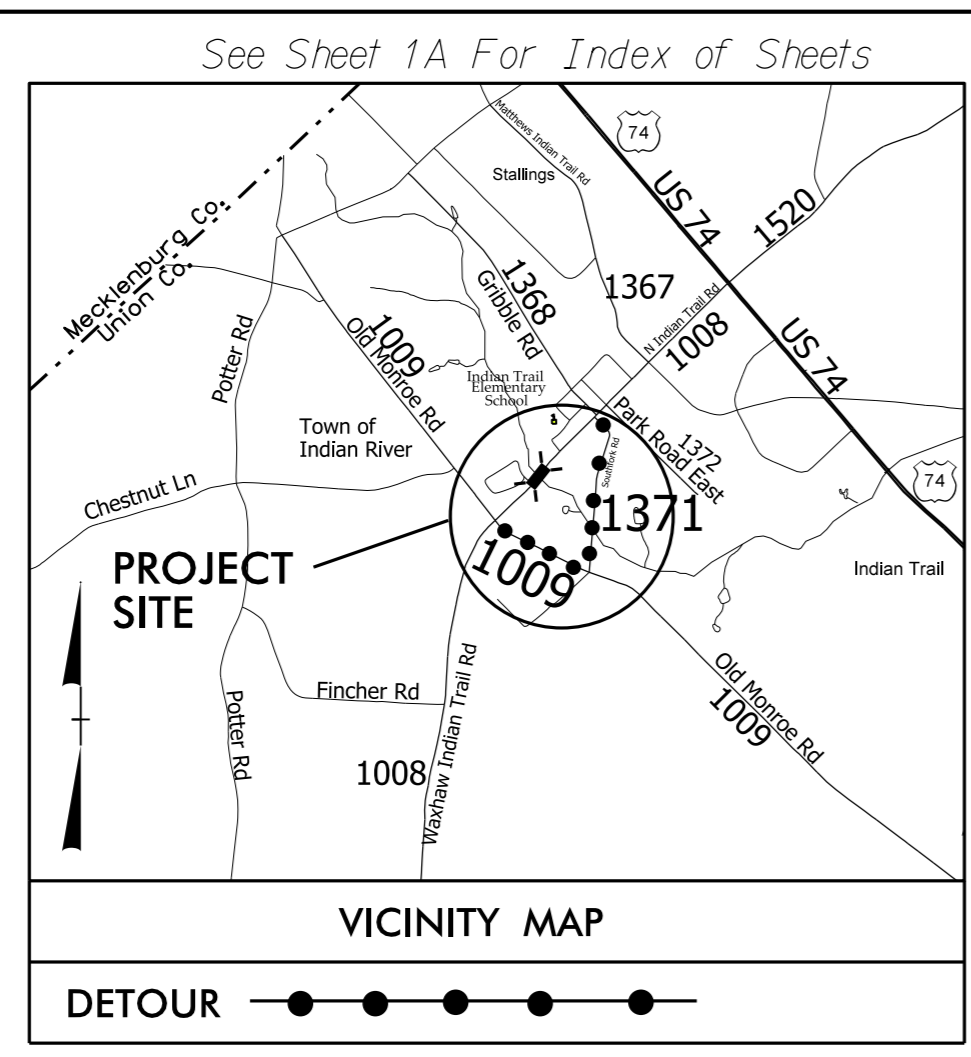


09/08/99

TIP PROJECT: B-5243

CONTRACT: C203663



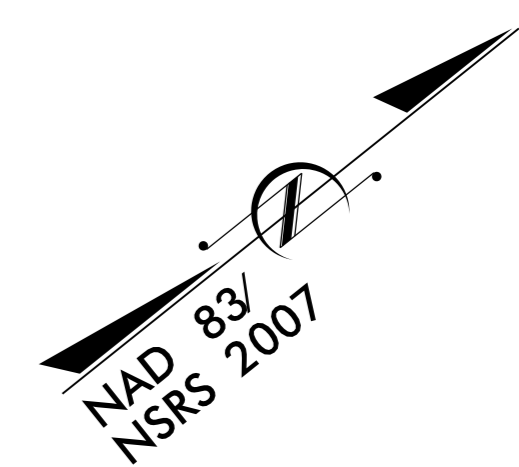
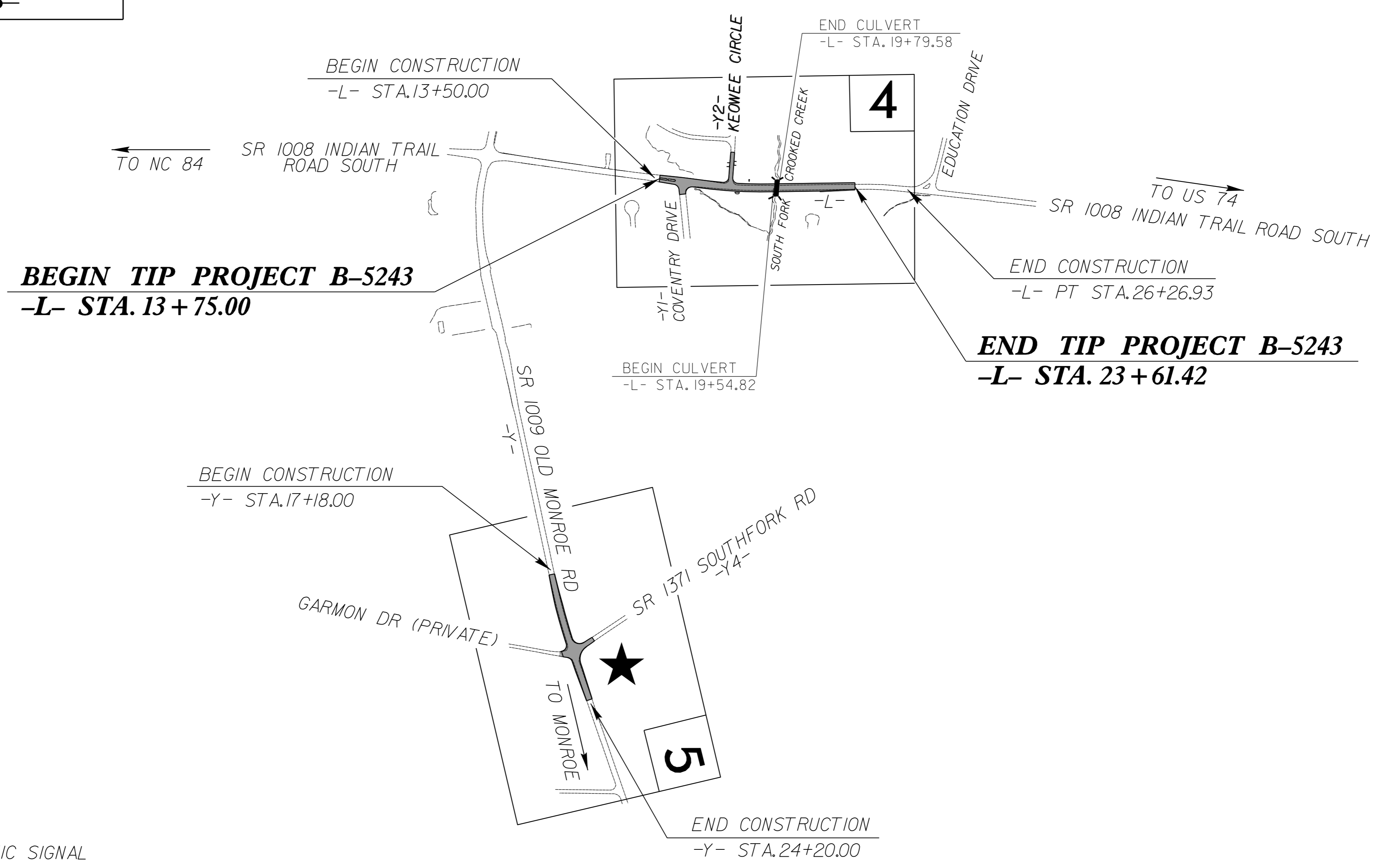
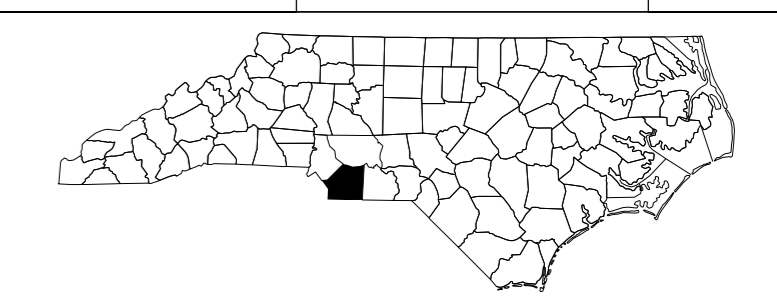
STATE OF NORTH CAROLINA
DIVISION OF HIGHWAYS

UNION COUNTY

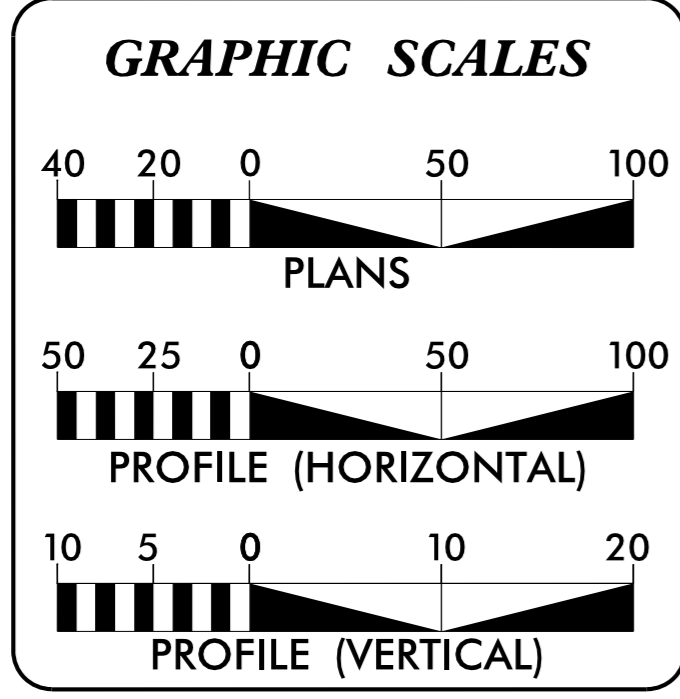
**LOCATION: BRIDGE 258 ON SR 1008 (INDIAN TRAIL ROAD SOUTH)
OVER SOUTH FORK CROOKED CREEK AND IMPROVEMENT
OF THE INTERSECTION OF SR 1009 AND SR 1371**

TYPE OF WORK: GRADING, DRAINAGE, PAVING, CULVERT AND SIGNAL

STATE	STATE PROJECT REFERENCE NO.	SHEET NO.	TOTAL SHEETS
N.C.	B-5243	1	
STATE PROJ. NO.	F.A. PROJ. NO.	DESCRIPTION	
42845.1.1	BRSTP-1008(23)	PE	
42845.2.FD1	BRSTP-1008(23)	RW	
42845.3.FDU1	BRSTP-1008(23)	UTIL.	
42845.3.FD1	BRSTP-1008(23)	CONST.	



★ TEMPORARY TRAFFIC SIGNAL



DESIGN DATA

ADT 2016 = 15,900
ADT 2036 = 19,350
K = 9 %
D = 65 %
T = 5 % *
V = 40 MPH
* TTST = 1% DUAL 4%

FUNC CLASS = MAJOR COLLECTOR
SUB REGIONAL TIER

PROJECT LENGTH

LENGTH OF ROADWAY TIP PROJECT B-5243 = 0.182 MILES

LENGTH STRUCTURE TIP PROJECT B-5243 = 0.005 MILES

TOTAL LENGTH OF TIP PROJECT B-5243 = 0.187 MILES

Prepared in the Office of:
DIVISION OF HIGHWAYS
1000 Birch Ridge Dr., Raleigh NC, 27610

2012 STANDARD SPECIFICATIONS	
RIGHT OF WAY DATE: JANUARY 16, 2015	G.E. BREW, PE PROJECT ENGINEER
LETTING DATE: JANUARY 19, 2016	I.T. YOUNIS PROJECT DESIGN ENGINEER

HYDRAULICS ENGINEER

DocuSigned by:
Eran M. Radakovitz/21/2015
SIGNATURE

ROADWAY DESIGN ENGINEER

DocuSigned by:
Gregory E. Brew/10/23/2015
SIGNATURE



20-OCT-2015 16:35
R:\Roadway\Proj\B5243_Rdy-t sh.dgn
\$\$\$\$\$USERNAME\$\$\$\$\$