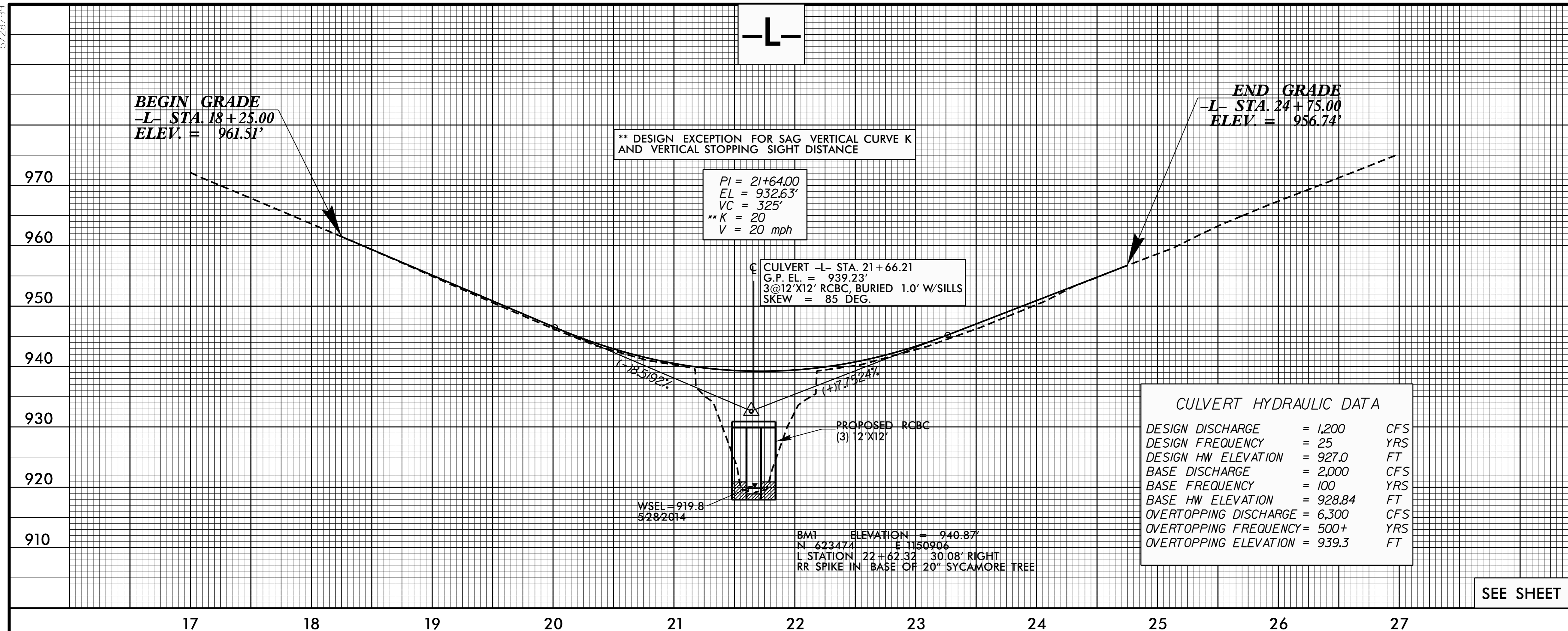


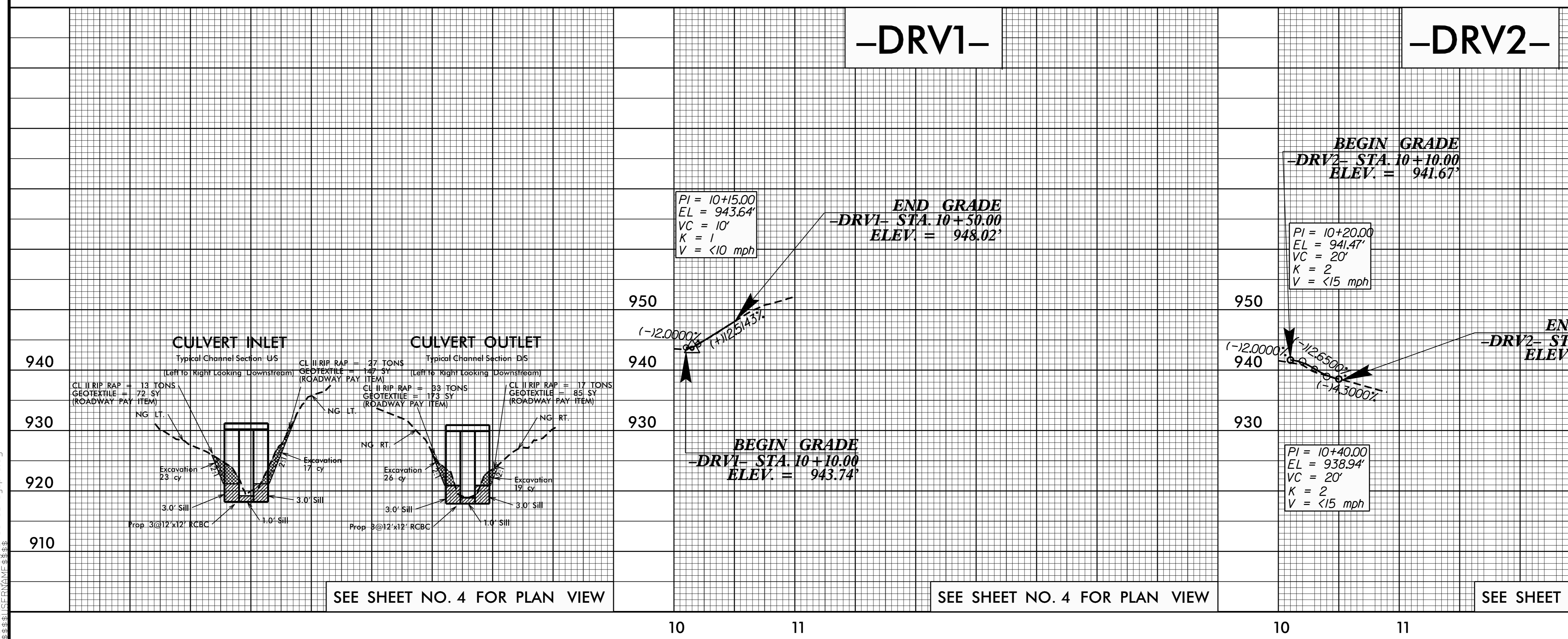
5/28/99

PROJECT REFERENCE NO. B-5395	SHEET NO. 5
ROADWAY DESIGN ENGINEER SEAL 033296 STEVEN D. KENDALL 10/23/2015	HYDRAULICS ENGINEER SEAL 032619 CARLOS R. SHARPLESS 10/23/2015
DOCUMENT NOT CONSIDERED FINAL UNLESS ALL SIGNATURES COMPLETED	



DESIGN DISCHARGE	= 1,200	CFS
DESIGN FREQUENCY	= 25	YRS
DESIGN HW ELEVATION	= 927.0	FT
BASE DISCHARGE	= 2,000	CFS
BASE FREQUENCY	= 100	YRS
BASE HW ELEVATION	= 928.84	FT
OVERTOPPING DISCHARGE	= 6,300	CFS
OVERTOPPING FREQUENCY	= 500+	YRS
OVERTOPPING ELEVATION	= 939.3	FT

SEE SHEET NO. 4 FOR PLAN VIEW



SEE SHEET NO. 4 FOR PLAN VIEW

SEE SHEET NO. 4 FOR PLAN VIEW

SEE SHEET NO. 4 FOR PLAN VIEW

20-OCT-2015 13:51 \\B-5395-Rdy-pl.dgn