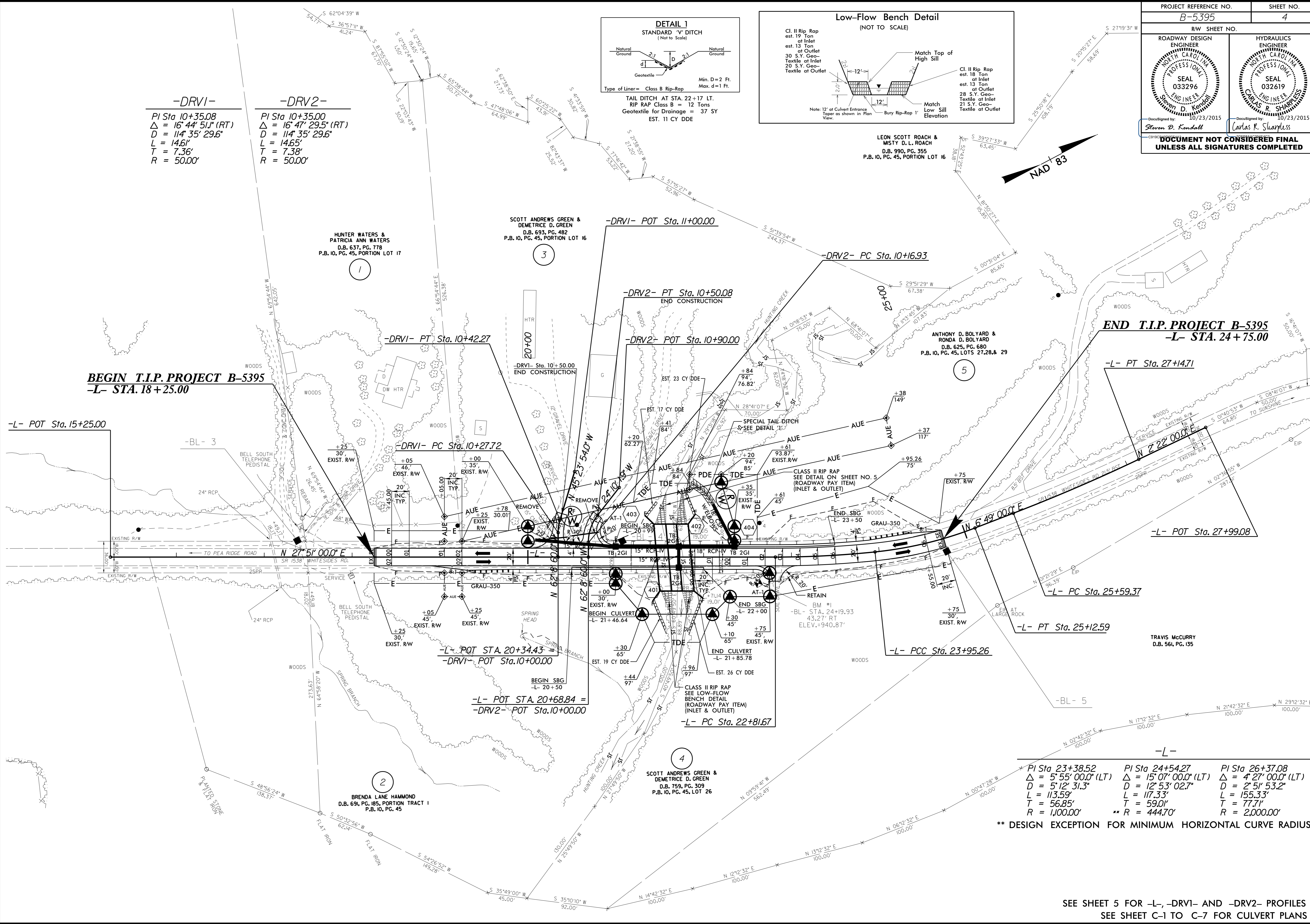
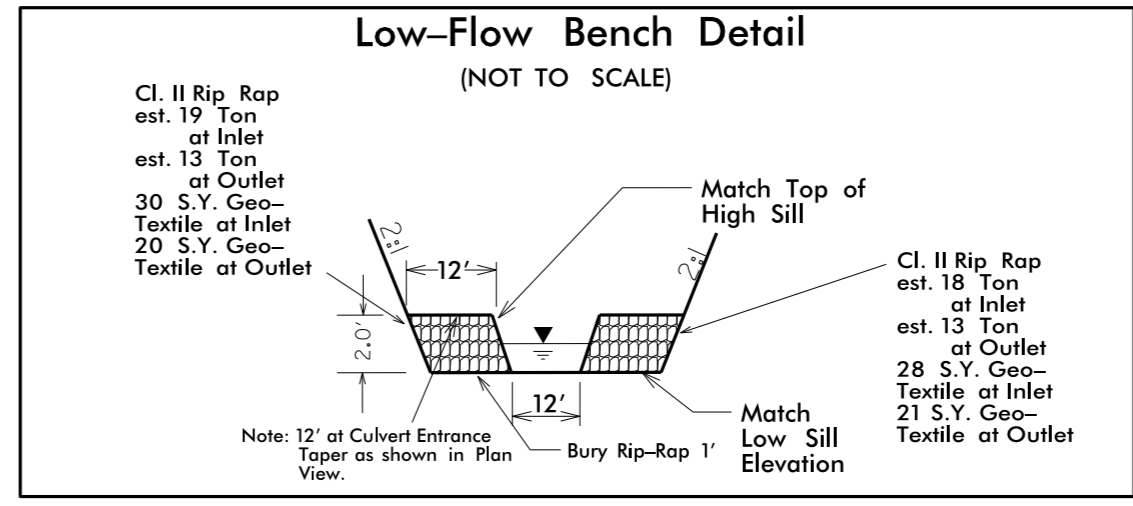
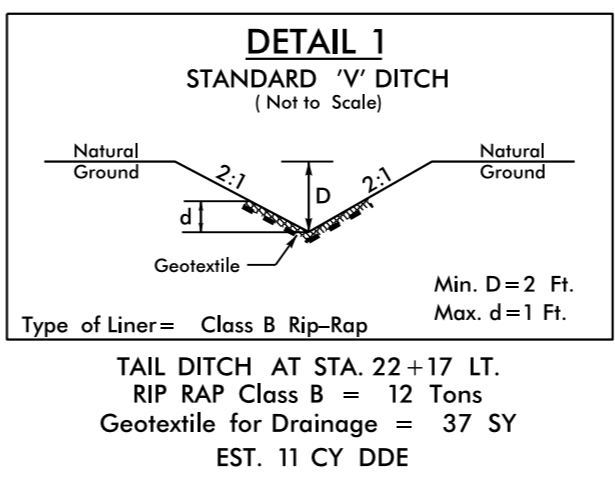


**-DRV1-**  
 PI Sta 10+35.08  
 $\Delta = 16' 44" 51.1" (RT)$   
 $D = 114' 35" 29.6"$   
 $L = 14.61'$   
 $T = 7.36'$   
 $R = 50.00'$

**-DRV2-**  
 PI Sta 10+35.00  
 $\Delta = 16' 47" 29.5" (RT)$   
 $D = 114' 35" 29.6"$   
 $L = 14.65'$   
 $T = 7.38'$   
 $R = 50.00'$



**-L-**

PI Sta 23+38.52 $\Delta = 5' 55" 00.0" (LT)$ $D = 5' 12" 31.3"$ $L = 113.59'$ $T = 56.85'$ $R = 1,100.00'$	PI Sta 24+54.27 $\Delta = 15' 07" 00.0" (LT)$ $D = 12' 53" 02.7"$ $L = 117.33'$ $T = 59.01'$ $R = 444.70'$	PI Sta 26+37.08 $\Delta = 4' 27" 00.0" (LT)$ $D = 2' 51" 53.2"$ $L = 155.33'$ $T = 77.71'$ $R = 2,000.00'$
---	---	---

**\*\* DESIGN EXCEPTION FOR MINIMUM HORIZONTAL CURVE RADIUS**

21-OCT-2015 06:13:06 B:\5395\_Rd\psh4.dgn  
 8/17/199