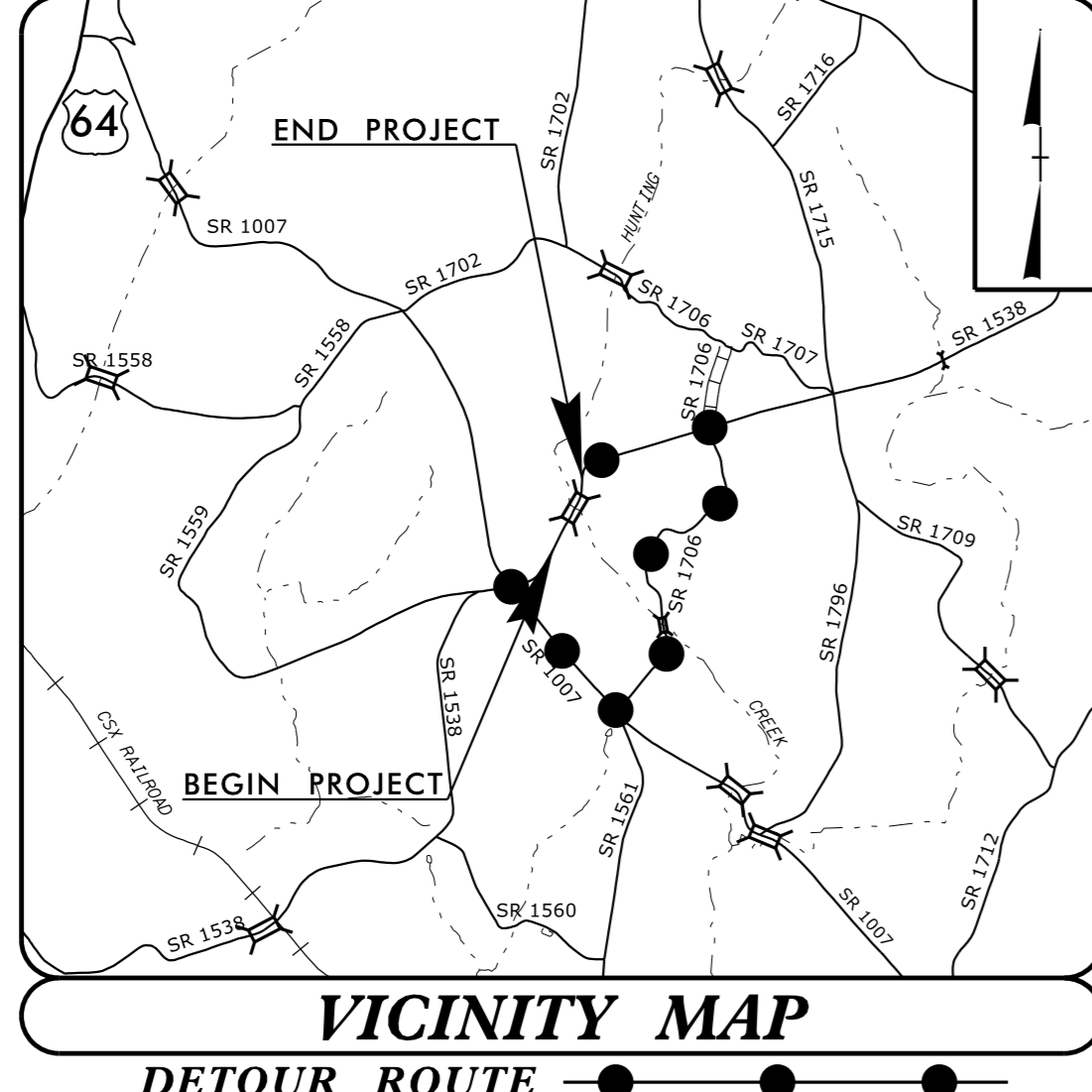


09/08/99

See Sheet 1A For Index of Sheets  
 See Sheet 1B For Conventional Symbols  
 See Sheets 1C-1 & 1C-2 For Survey Control Sheets



**VICINITY MAP**  
 DETOUR ROUTE ●—●—●—●

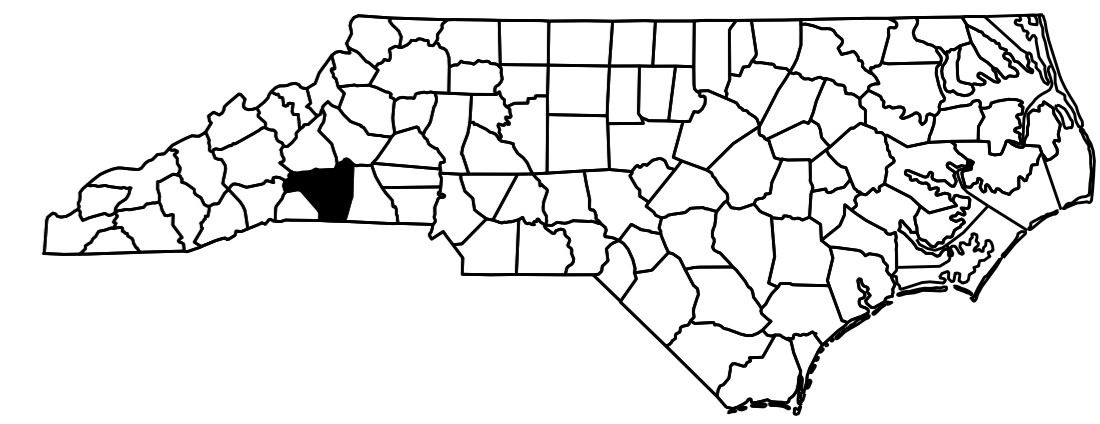
STATE OF NORTH CAROLINA  
 DIVISION OF HIGHWAYS

**RUTHERFORD COUNTY**

**LOCATION: REPLACEMENT OF BRIDGE No. 577 OVER HUNTING CREEK ON SR 1538 (WHITESIDES ROAD)**

**TYPE OF WORK: GRADING, PAVING, DRAINAGE, AND CULVERT**

STATE	STATE PROJECT REFERENCE NO.	SHEET NO.	TOTAL SHEETS
N.C.	B-5395	1	
STATE PROJ. NO.	F.A. PROJ. NO.	DESCRIPTION	
46110.1.1	BRSTP-1538(8)	P.E.	
46110.2.FD1	BRSTP-1538(8)	RW, UTILITIES	
46110.3.2		CONSTRUCTION	

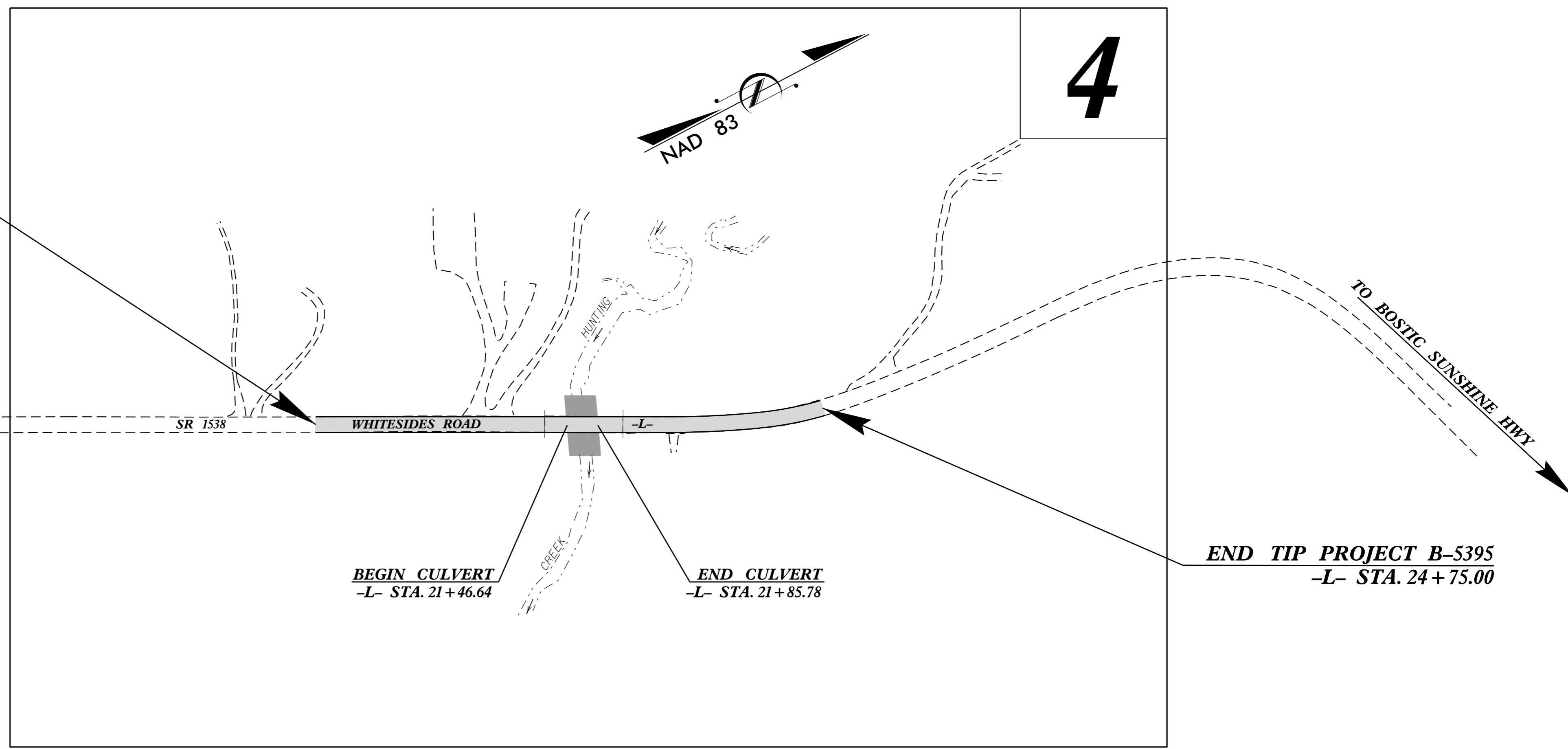


**TIP PROJECT: B-5395**

**CONTRACT: C203665**

**BEGIN TIP PROJECT B-5395**  
 -L- STA. 18+25.00

TO RUTHERFORDTON



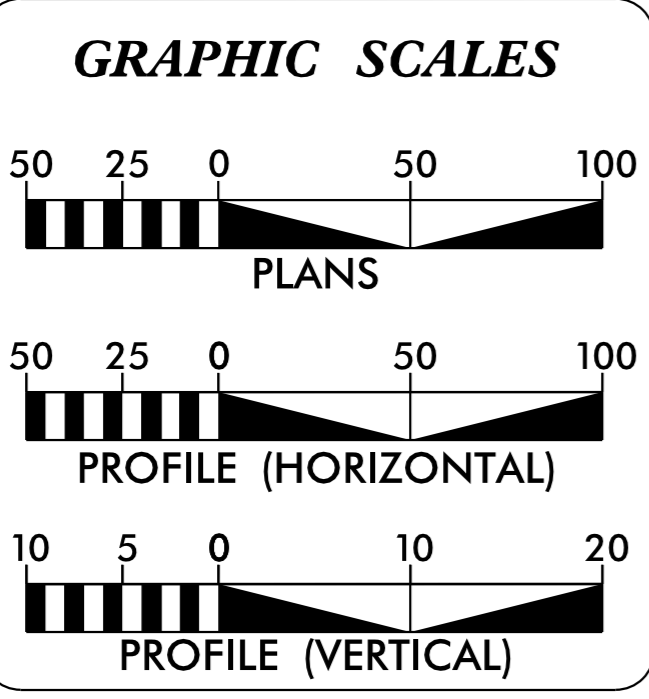
**BEGIN CULVERT**  
 -L- STA. 21+46.64

**END CULVERT**  
 -L- STA. 21+85.78

**END TIP PROJECT B-5395**  
 -L- STA. 24+75.00

TO BOSTIC SUNSHINE HWY

**\*\* DESIGN EXCEPTIONS FOR MINIMUM HORIZONTAL CURVE RADIUS, SAG VERTICAL CURVE K AND VERTICAL STOPPING SIGHT DISTANCE**



**DESIGN DATA**

ADT 2016 =	1040
ADT 2036 =	1170
K =	11 %
D =	70%
T =	8 % *
V =	50 MPH
* TTST = 3% DUAL = 5%	
FUNC CLASS = LOCAL SUBREGIONAL TIER	

**PROJECT LENGTH**

LENGTH ROADWAY TIP PROJECT B-5395	=	0.116 Miles
LENGTH STRUCTURE TIP PROJECT B-5395	=	0.007 Miles
<b>TOTAL LENGTH TIP PROJECT B-5395</b>	<b>=</b>	<b>0.123 Miles</b>

Prepared in the Office of:  
**DIVISION OF HIGHWAYS**  
 1000 Birch Ridge Dr., Raleigh NC, 27610

2012 STANDARD SPECIFICATIONS	
<b>RIGHT OF WAY DATE:</b> JANUARY 23, 2015	<b>KEVIN E. MOORE, P.E.</b> PROJECT ENGINEER
<b>LETTING DATE:</b> JANUARY 19, 2016	<b>STEVEN D. KENDALL, P.E.</b> PROJECT DESIGN ENGINEER

**HYDRAULICS ENGINEER**

DocuSigned by:  
 Carlos R. Sharpless  
 SIGNATURE: 39AAC39AE4C2 12/16/2015

**ROADWAY DESIGN ENGINEER**

DocuSigned by:  
 Steven D. Kendall  
 SIGNATURE: 39AAC39AE4C2 12/16/2015

**DOCUMENT NOT CONSIDERED FINAL UNLESS ALL SIGNATURES COMPLETED**

14-DEC-2015 12:11 R:\Roadway\Proj\B-5395\_Rdy\_1.tsh.dgn \$\$\$USERNAME\$\$\$