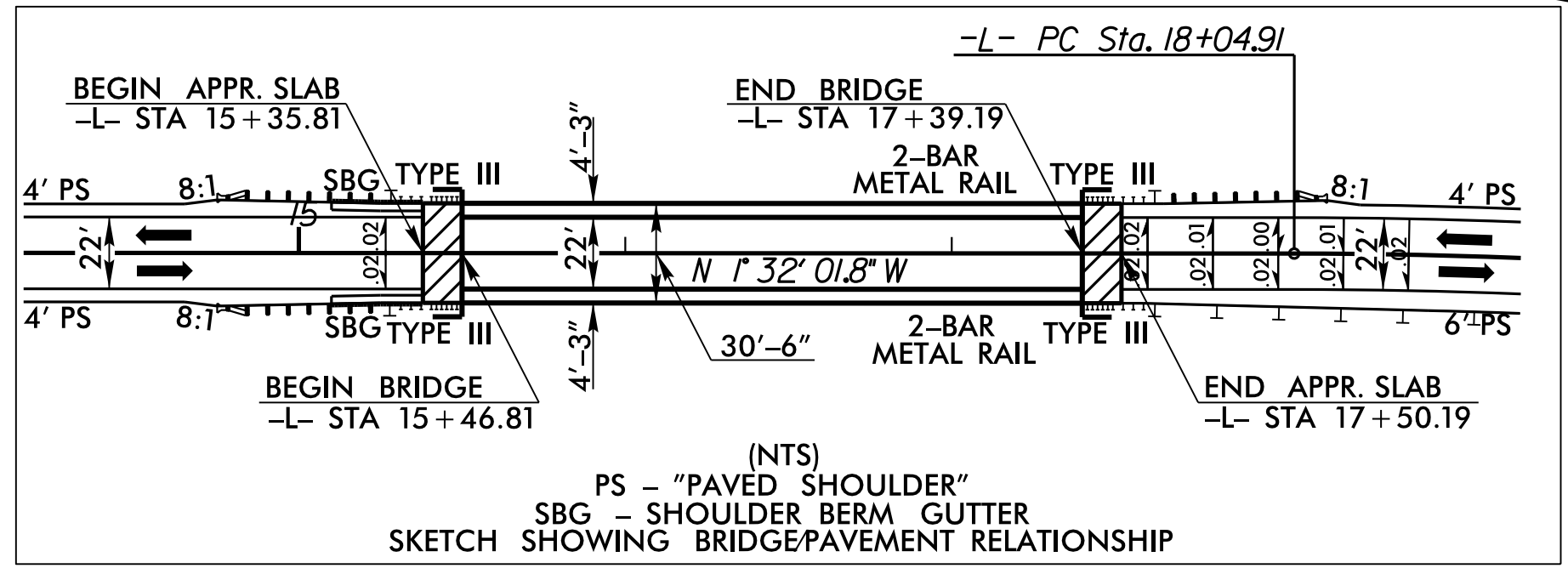
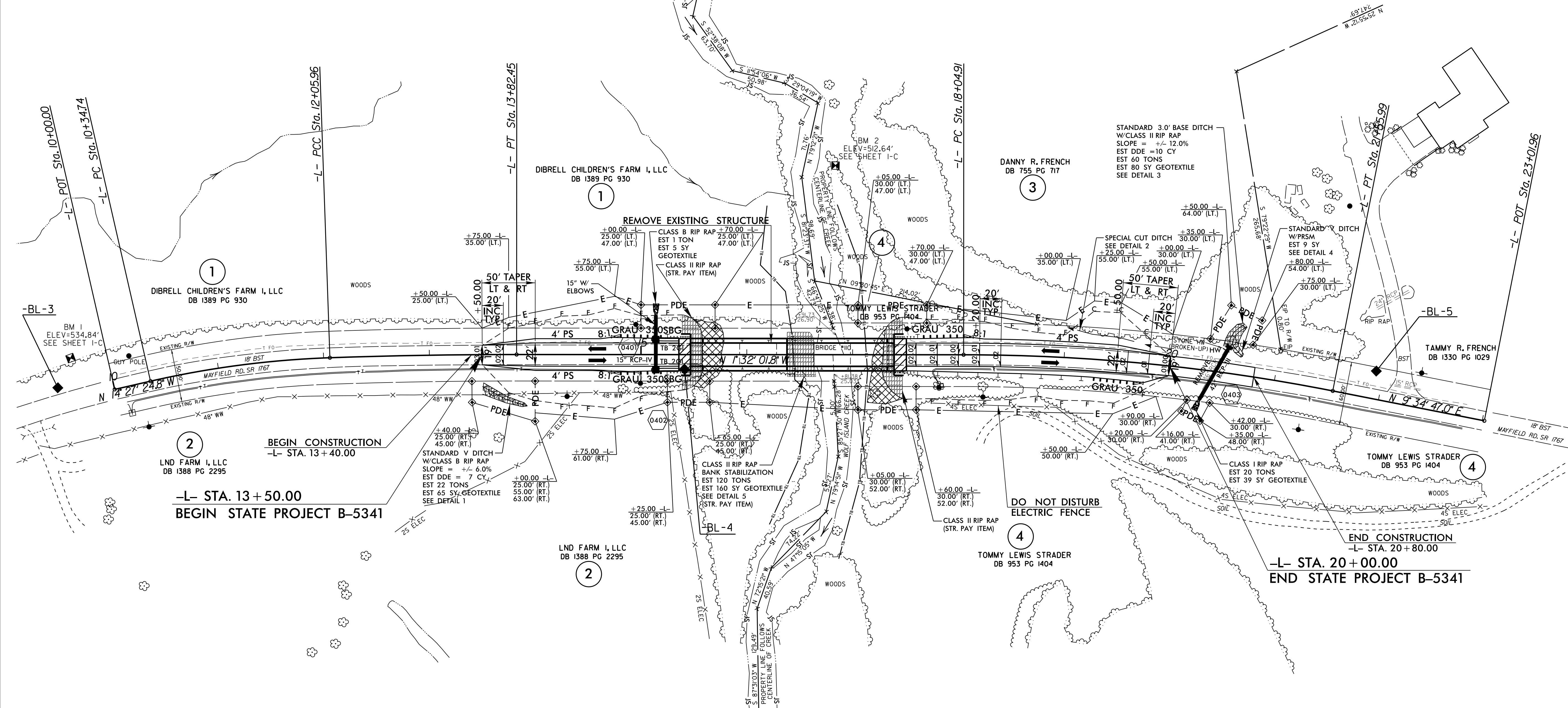


NAD 83/NSRS 2007

-L-		
PI Sta 11+20.61	PI Sta 12+94.22	PI Sta 19+81.00
$\Delta = 10' 54" 02.5" (RT)$	$\Delta = 2' 01" 20.6" (RT)$	$\Delta = 11' 06" 48.9" (RT)$
$D = 6' 21" 58.3"$	$D = 1' 08" 45.3"$	$D = 3' 09" 55.8"$
$L = 171.23'$	$L = 176.49'$	$L = 351.08'$
$T = 85.87'$	$T = 88.25'$	$T = 176.09'$
$R = 900.00'$	$R = 5,000.00'$	$R = 1,810.00'$
SE = SEE PLANS SE = SEE PLANS		



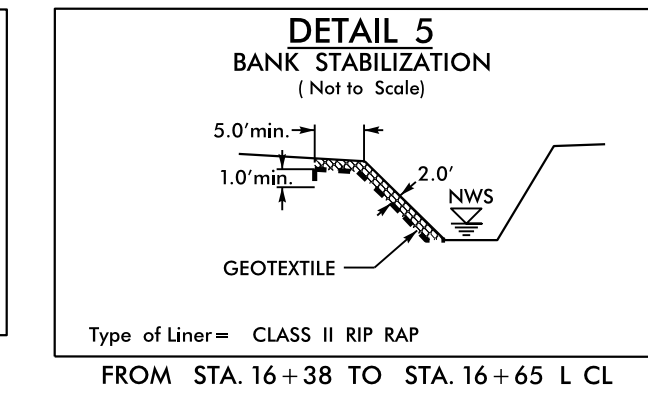
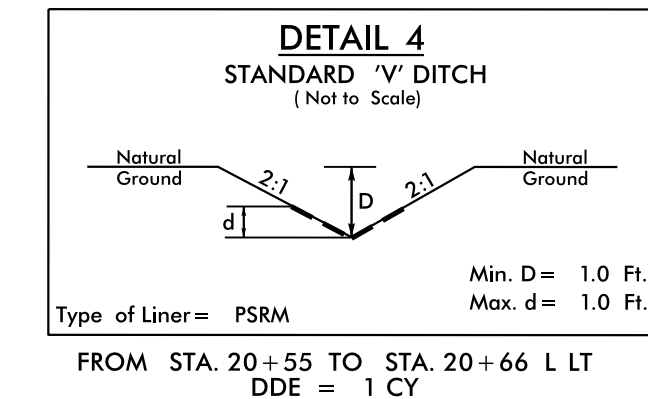
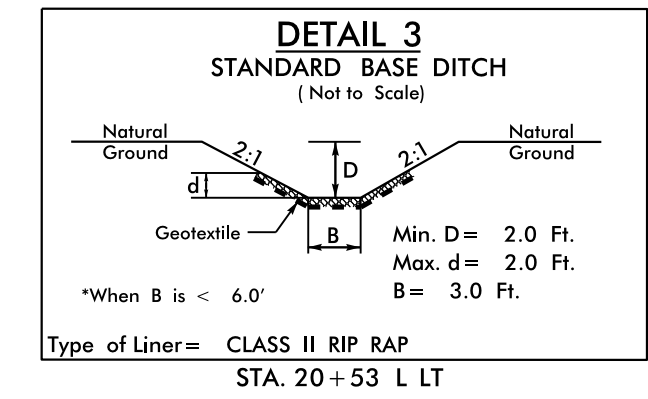
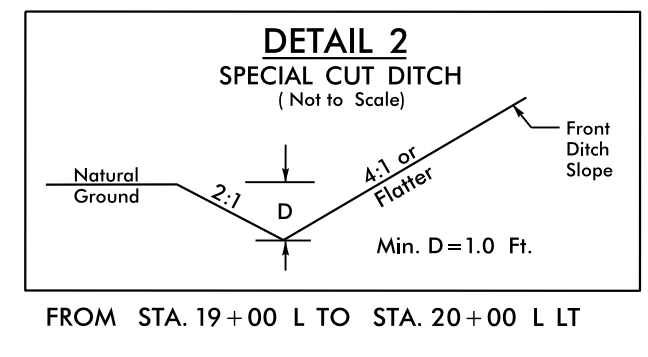
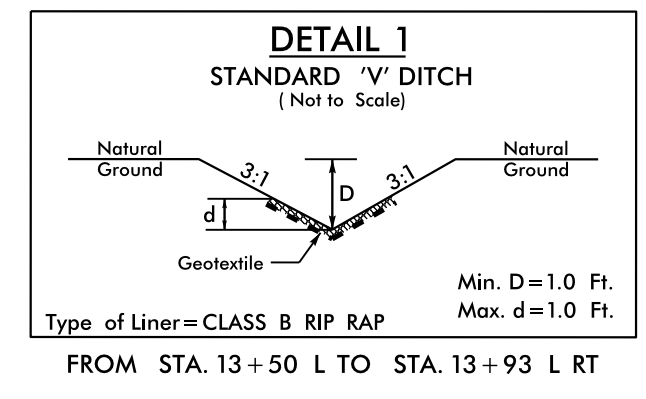
(NTS)  
PS - "PAVED SHOULDER"  
SBG - SHOULDER BERM GUTTER  
SKETCH SHOWING BRIDGE/PAVEMENT RELATIONSHIP



REVISIONS

EXCAVATE EXISTING ROAD FILL TO NATURAL GROUND = 180 CY (STRUCTURE PAY ITEM)

NOTE: SBG - SHOULDER BERM GUTTER  
-L- STA. 15+10.00 TO BEGIN APPROACH SLAB LT. & RT.



SEE SHEET 5 FOR -L- PROFILE  
SEE SHEETS S-1 THRU S-23 FOR STRUCTURE PLANS

06-OCT-2015 11:00 AM B-5341\_Rdy\_psh\_04.dgn  
S:\ASSETMANAGEMENT\B-5341