

**This electronic collection of documents is provided
for the convenience of the user
and is Not a Certified Document –**

**The documents contained herein were originally issued
and sealed by the individuals whose names and license
numbers appear on each page, on the dates appearing
with their signature on that page.**

**This file or an individual page
shall not be considered a certified document.**

09/08/99

2016CPT.08.08.10761, W-5601AJ
I-5737, I-5763

TIP PROJECT:

CONTRACT: C203764

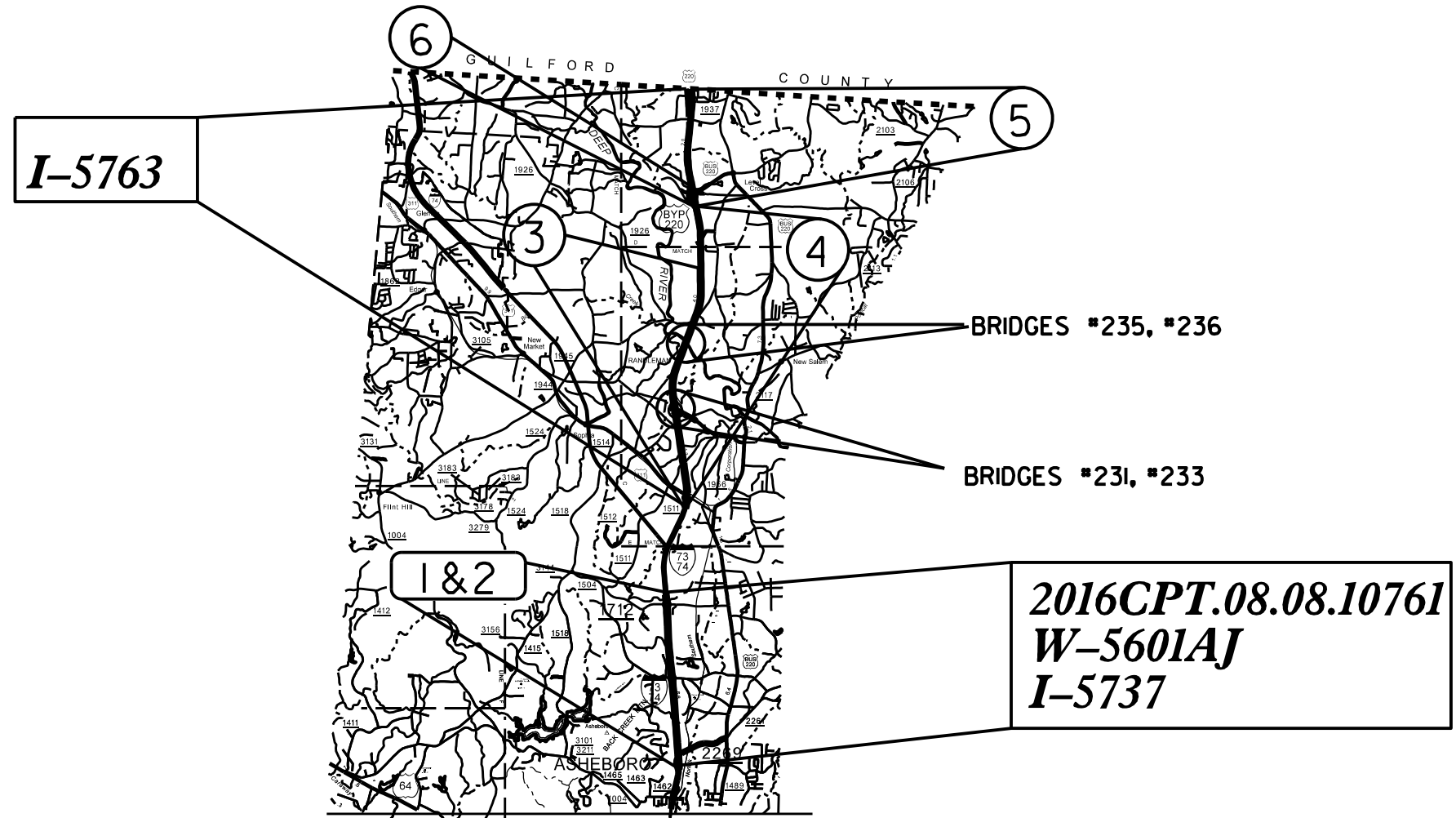
STATE OF NORTH CAROLINA
DIVISION OF HIGHWAYS

RANDOLPH COUNTY

LOCATION: 2016CPT.08.08.10761 US 220 /I-73 /I-74 FROM SR 2269 TO SR 1712
W-5601AJ US 220 /I-73 /I-74 FROM SR 2269 TO SR 1712
I-5737 US 220 /I-73 /I-74 FROM SR 2269 TO SR 1712
I-5763 US 220 /I-73 /I-74 FROM US 311 TO GUILFORD CO LINE

TYPE OF WORK: PAVEMENT REHABILITATION: MILL & FILL AND OVERLAY
STRUCTURE REHABILITATION: LMC OVERLAY AND PAINTING

STATE	STATE PROJECT REFERENCE NO.	SUBJECT NO.	TOTAL SHEETS
N.C.	2016CPT.08.08.10761, W-5601AJ I-5737, I-5763	1	
STATE PROJ. NO.	F.A. PROJ. NO.	DESCRIPTION	
2016CPT.08.08.10761		CONST	
50138.3.FS37	HSIP-0731(6)	W-5601AJ (CONST)	
52019.3.1	NHPP-0073(41)	I-5737 (CONST)	
53006.3.1	NHPP-0073(042)	I-5763 (CONST)	



GRAPHIC SCALES

NOT TO SCALE

DESIGN DATA

PROJECT LENGTH

2016CPT.08.08.10761
W-5601AJ
I-5737 — 6.512 MI

I-5763 — 12.814 MI

Prepared in the Office of:

DIVISION OF HIGHWAYS
DIVISION 8 DESIGN & CONSTRUCT UNIT
902 N. SANDHILLS BLVD.
ABERDEEN NC 28315

2012 STANDARD SPECIFICATIONS

RIGHT OF WAY DATE:

LETTING DATE:
JANUARY 19, 2016

PROJECT ENGINEER

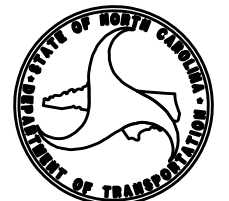
PROJECT DESIGN ENGINEER

HYDRAULICS ENGINEER

SIGNATURE: _____ P.E.

DIVISION DESIGN &
CONSTRUCT ENGINEER

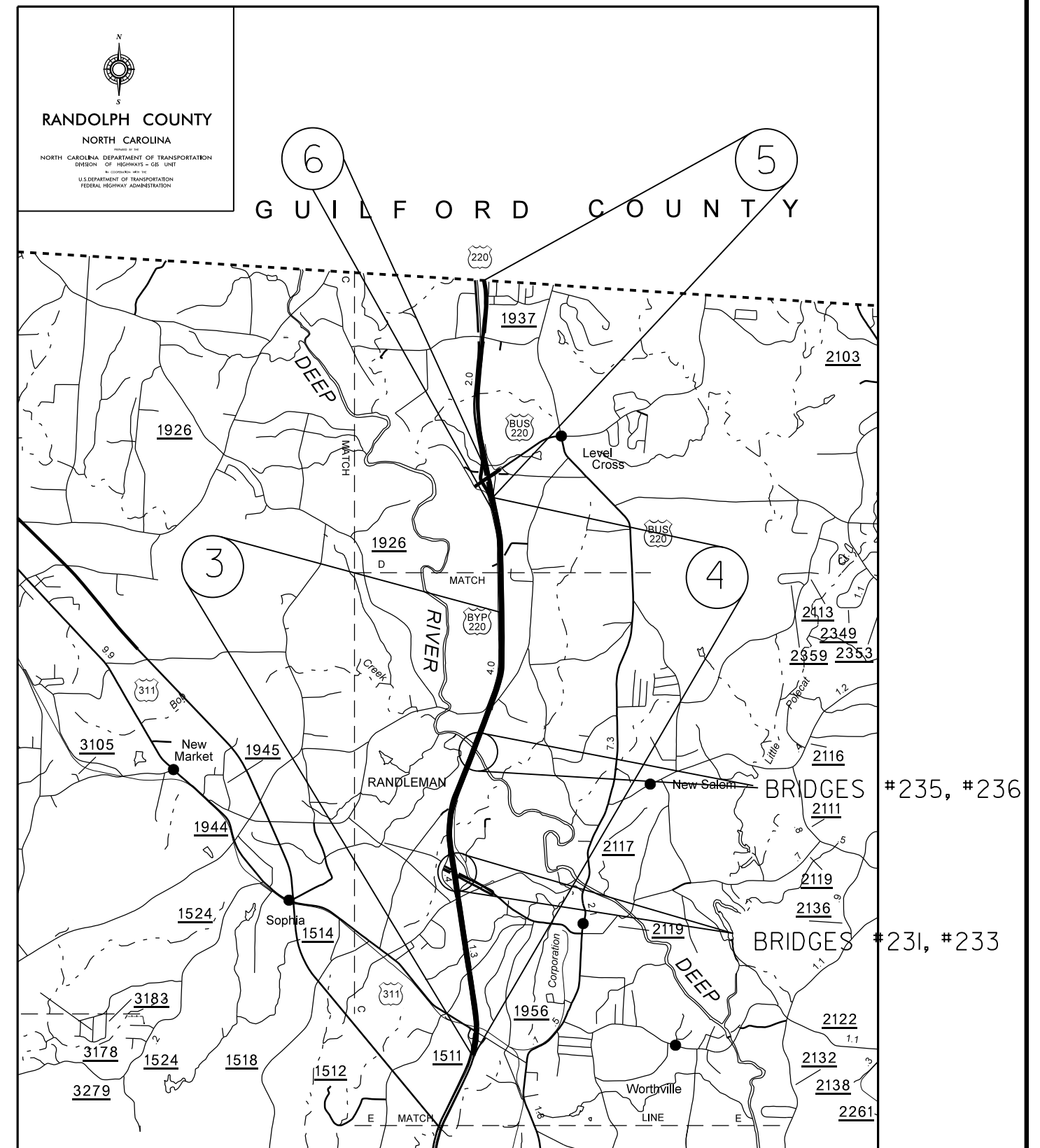
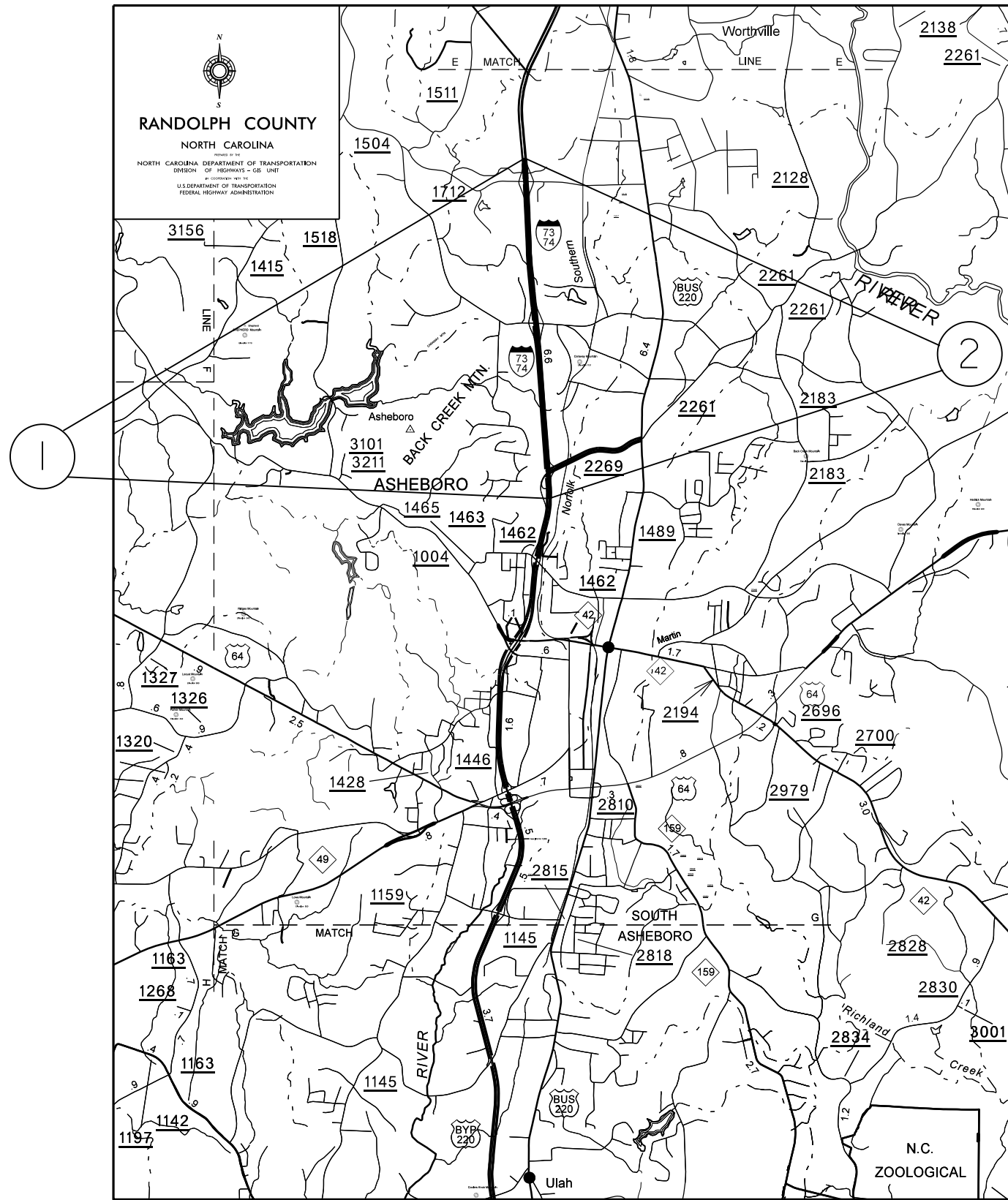
SIGNATURE: _____ P.E.

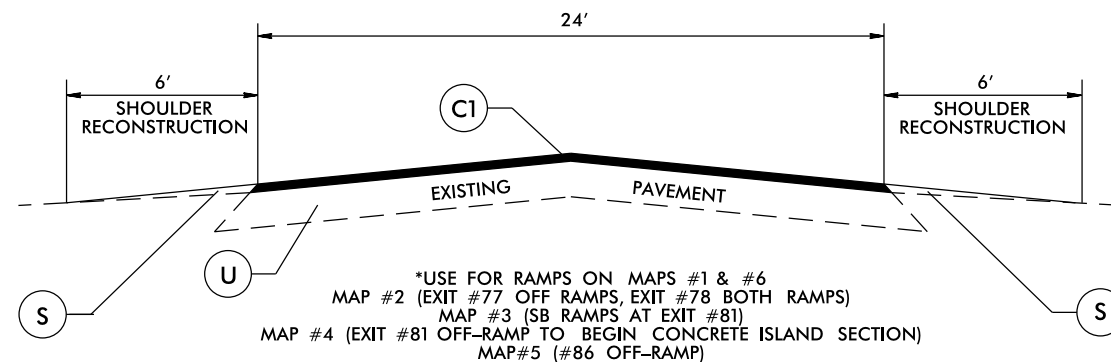
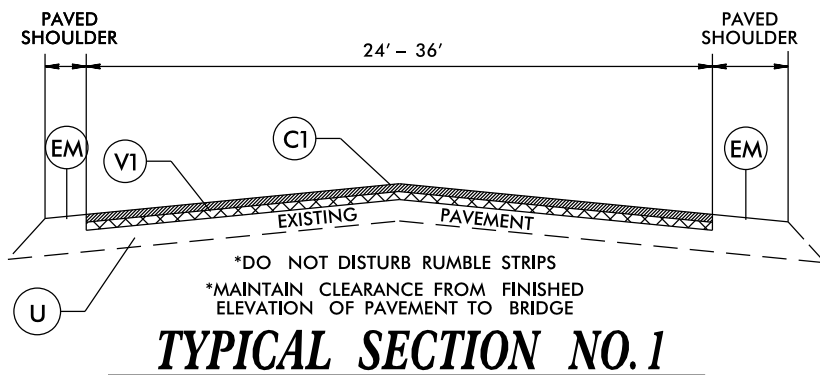


\$\$\$\$\$SYTIME\$\$\$\$\$
\$\$\$\$\$DCN\$\$\$\$\$
\$\$\$\$\$USERNAME\$\$\$\$\$

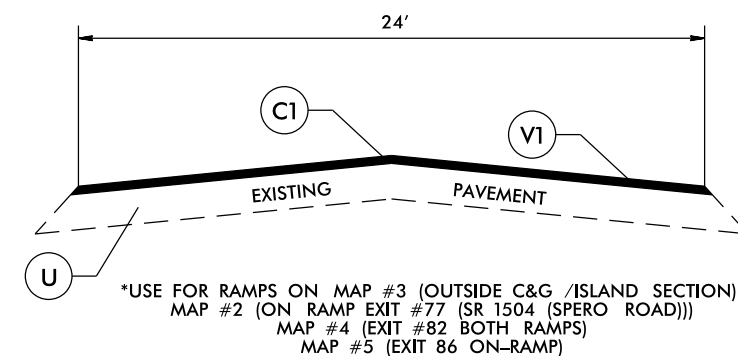
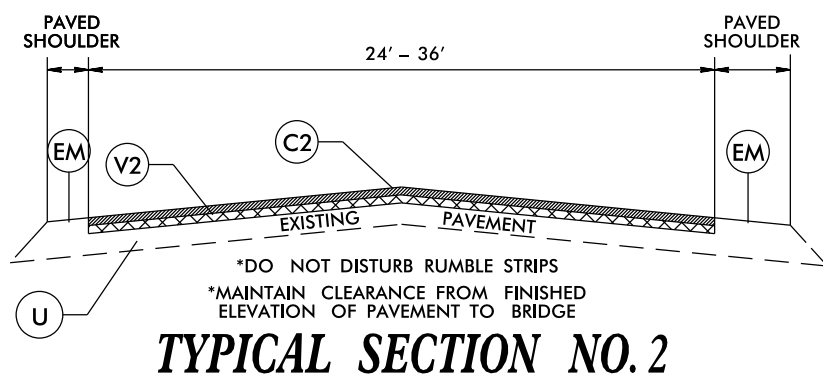
MAPS #1, & #2

MAPS #4, #5, & #6

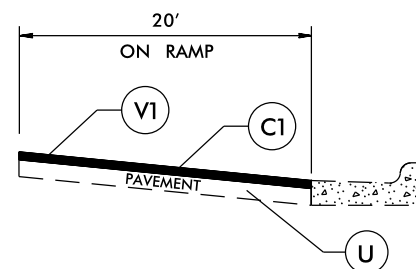
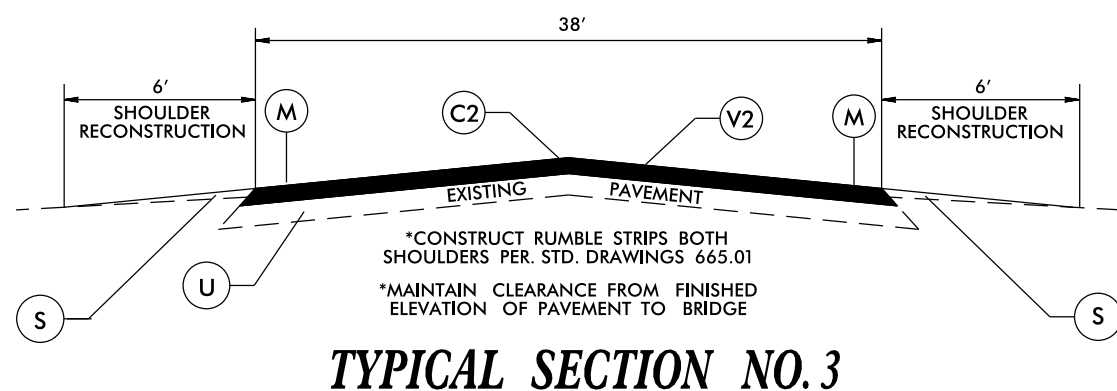




TYPICAL SECTION NO. 4



TYPICAL SECTION NO. 5



TYPICAL SECTION NO. 6

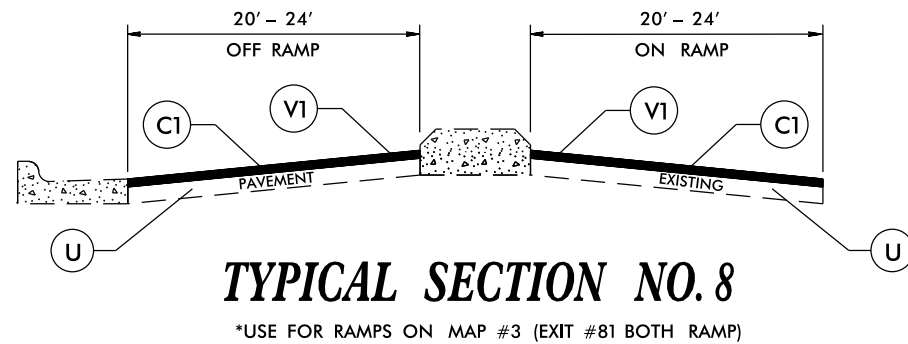
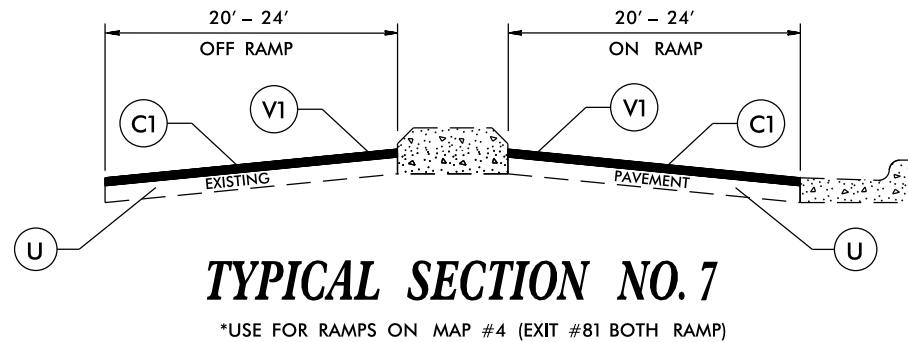
*USE FOR RAMP ON MAP #4
 (BEYOND CONCRETE ISLAND)
 (EXIT #81 ON RAMP)

PAVEMENT SCHEDULE

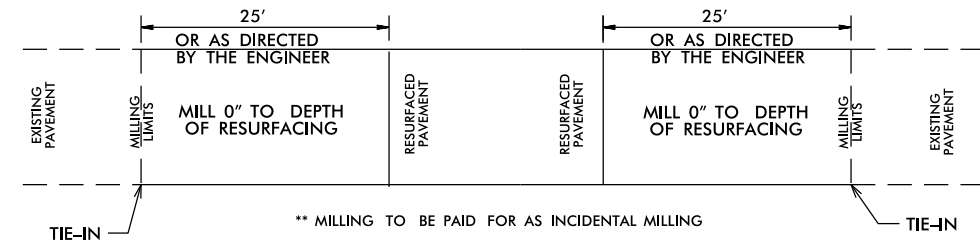
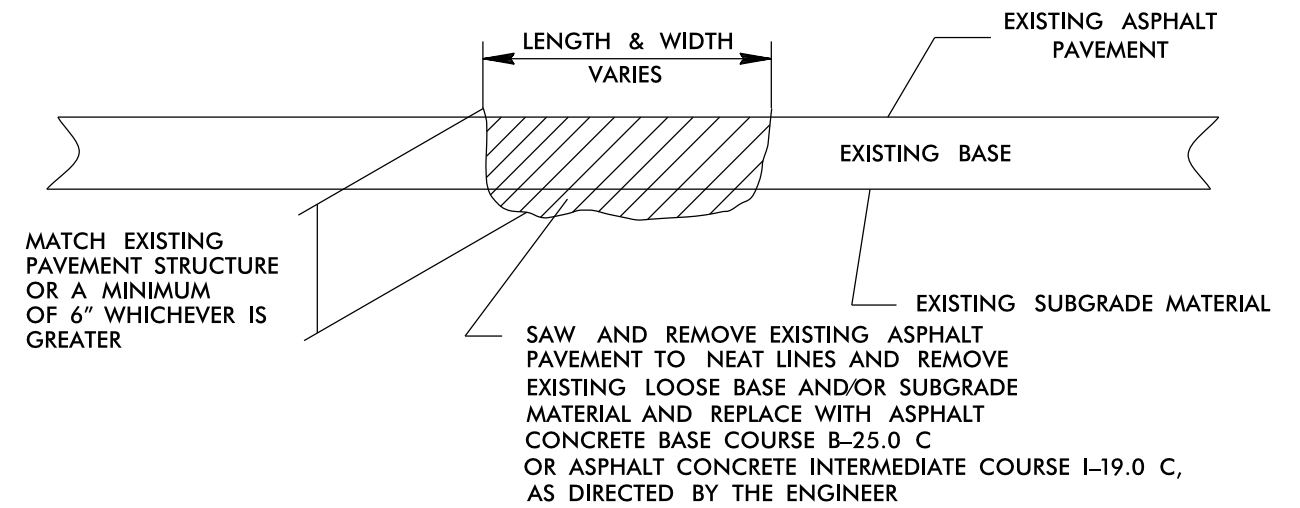
C1	PROP. APPROX. 1.50" ASPHALT CONCRETE SURFACE COURSE, TYPE S9.5C, AT AN AVERAGE RATE OF 168 LBS. PER SQ. YD.
C2	PROP. APPROX. 2.0" ASPHALT CONCRETE SURFACE COURSE, TYPE S9.5C, AT AN AVERAGE RATE OF 224 LBS. PER SQ. YD.
EM	EXISTING MILLED RUMBLE STRIPS
M	PROP. MILLED RUMBLE STRIP
S	AGGREGATE SHOULDER BORROW
U	EXISTING PAVEMENT.
V1	MILLING 1.50"
V2	MILLING 2.00"

040397

20-NOV-2015 14:42
 I:\P-5763_I-5737_Resources\Drawing\I-5763_15737_TYPICAL S.dgn
 User: AT-DIBCAD-272410



DETAILS OF PATCHING EXISTING PAVEMENT PRIOR TO RESURFACING
DETAIL

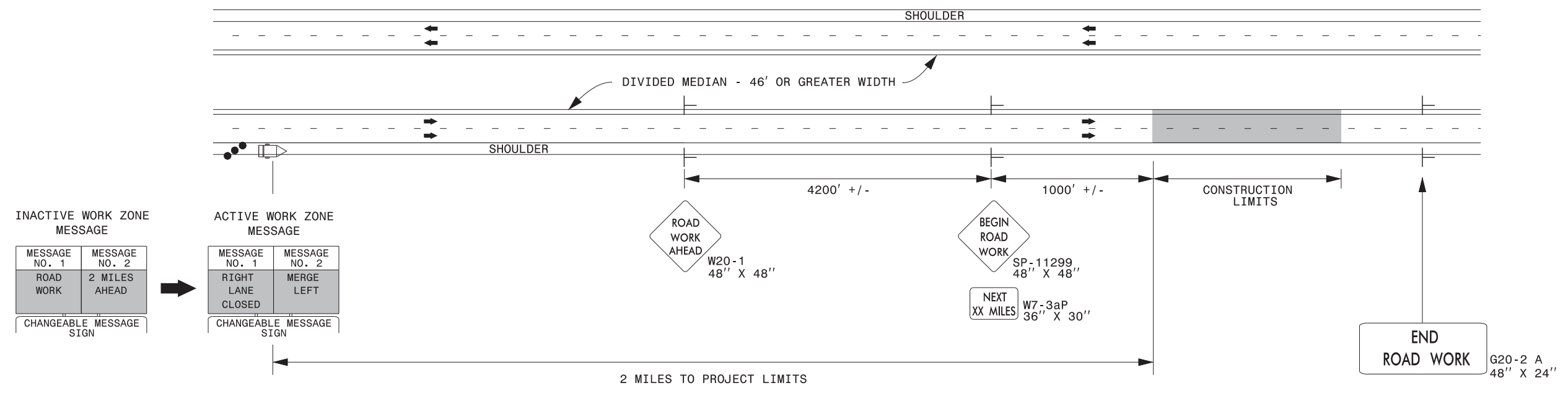


PAVEMENT TIE-IN DETAIL

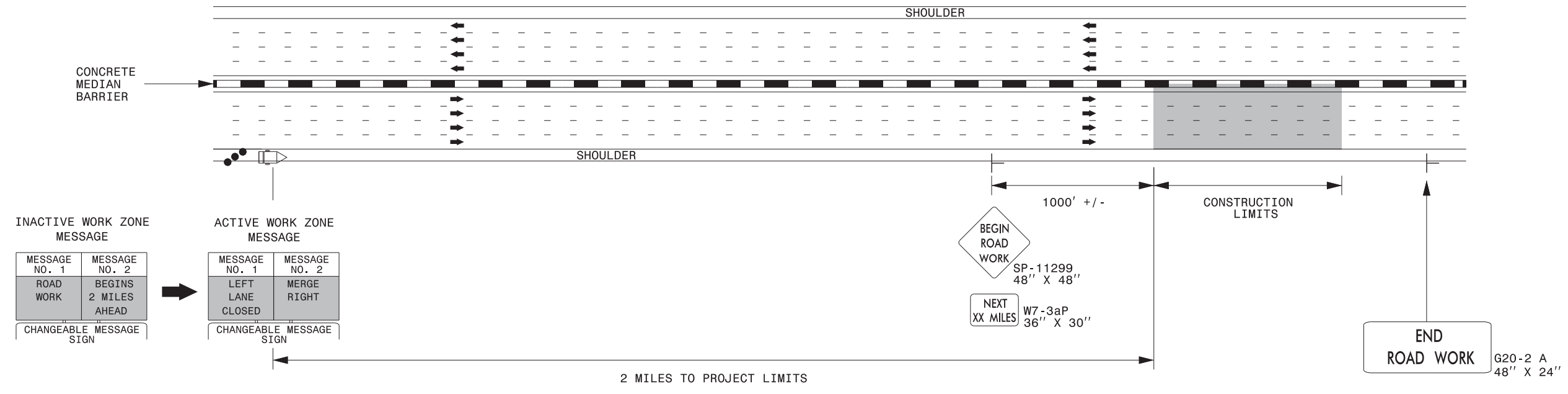
PAVEMENT SCHEDULE

PAVEMENT SCHEDULE	
C1	PROP. APPROX. 1.50" ASPHALT CONCRETE SURFACE COURSE, TYPE S9.5C, AT AN AVERAGE RATE OF 168 LBS. PER SQ. YD.
C2	PROP. APPROX. 2.0" ASPHALT CONCRETE SURFACE COURSE, TYPE S9.5C, AT AN AVERAGE RATE OF 224 LBS. PER SQ. YD.
EM	EXISTING MILLED RUMBLE STRIPS
M	PROP. MILLED RUMBLE STRIP
S	AGGREGATE SHOULDER BORROW
U	EXISTING PAVEMENT.
V1	MILLING 1.50"
V2	MILLING 2.00"

DIVIDED MEDIANS WITH WIDTHS 46' OR GREATER



DIVIDED MEDIANS WITH WIDTHS LESS THAN 46' OR WITH PERMANENT MEDIAN BARRIER

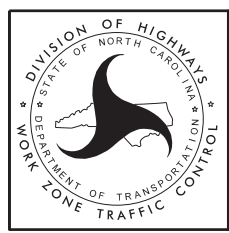


NOTES:

- 1) LATERAL CLEARANCE AT ALL SIGN LOCATIONS SHALL BE 6' AS MEASURED FROM THE EDGE OF PAVEMENT.
- 2) MOUNT SIGNS THAT ARE LARGER THAN 10 SQUARE FEET IN AREA ON TWO OR MORE WOOD OR U-CHANNEL SUPPORTS. PERFORATED SQUARE TUBING SUPPORT SYSTEMS MAY SUPPORT LARGER AREAS ON A SINGLE SUPPORT. FOLLOW MANUFACTURER'S RECOMMENDATIONS. THESE SYSTEMS SHALL BE NCHRP 350 COMPLIANT AND NCDOT APPROVED.
- 3) FOR MEDIAN WIDTHS LESS THAN 46' (MEASURED EDGELINE TO EDGELINE) USE THE BOTTOM DRAWING.
- 4) IF STATIONARY GENERAL WARNING SIGNS ARE USED, THEY WILL BE PAID FOR PER SECTION 104 OF THE NCDOT STANDARD SPECIFICATIONS AS EXTRA WORK.
- 5) INSTALL "ROAD WORK AHEAD" (W20-1) ALONG ENTRANCE RAMP 500' PRIOR TO RAMP TERMINAL, AND "END ROAD WORK" (G20-2a) AT THE END OF EXIT RAMP WITHIN THE WORK ZONE.
- 6) IF MILLED AREAS ARE NOT PAVED BACK BY THE END OF THE WORK DAY, PORTABLE SIGNS SHALL BE USED TO WARN DRIVERS OF THE PRESENT CONDITIONS. THESE ARE TO INCLUDE, BUT NOT LIMITED TO "ROUGH ROAD" W8-8, "UNEVEN LANES" W8-11, "GROOVED PAVEMENT" W8-15 w/MOTORCYCLE PLAQUE MOUNTED BELOW. THESE ARE TO BE DOUBLE INDICATED ON MULTI-LANE ROADWAYS WITH SPEED LIMITS 45 MPH AND GREATER AND WITH DIVIDED MEDIANS OF 46' OR GREATER. THESE PORTABLE SIGNS ARE INCIDENTAL TO THE OTHER ITEMS OF WORK INCLUDED IN THE TEMPORARY TRAFFIC CONTROL (LUMP SUM) PAY ITEM.

LEGEND

- CHANGEABLE MESSAGE SIGN (CMS)
- STATIONARY SIGN
- DIRECTION OF TRAFFIC FLOW
- TRAFFIC DRUM



**RESURFACING ADVANCE
WARNING SIGNS FOR
HIGH SPEED FACILITIES
≥ 60 MPH**

3/23/2015 C:\Users\rmgarrrett\Downloads\Resurfacing_AdvWarn_HSpd.dgn User:rmgarrrett

PROJECT NO.	SHEET NO.	TOTAL NO.
2016CPT.08.08.10761, 50138.3.FS37 (W-5601AJ) 52019.3.1 (I-5737), 53006.3.1 (I-5763)	7	

SUMMARY OF QUANTITIES

PROJECT NO	COUNTY	MAP NO	ROUTE	DESCRIPTION	TYP	LANES	LANE TYPE	FINAL SURFACE TESTING REQUIRED	AGGREGATE SHOULDER BORROW REQUIRED	WARM MIX ASPHALT REQUIRED	LENGTH MI	WIDTH FT	AGGREGATE SHOULDER BORROW TON	SHOULDER RECONSTRUCTION SMI	1.5" MILLING SY	2" MILLING SY	INCIDENTAL MILLING SY	SURFACE COURSE, S9.5C TONS	ASPHALT BINDER FOR PLANT MIX TONS	PATCHING EXISTING PAVEMENT TONS	MILLED RUMBLE STRIPS LF	PORTABLE LIGHTING LS	GROOVING BRIDGE FLOORS SF	POLLUTION CONTROL LS	CLASS II, SURFACE PREPARATION SY	
2016CPT.08.08.10761	Randolph	1	US-220/I-73/I-74 SB	FROM PVMT JT. NORTH OF SR 1712 (PINEVIEW ST) TO PVMT. JT. SOUTH OF SR 2269 (VISION DR)	1,4	2	MD	NO	YES	NO	3.2	24-36	420	1.51	48,250		535	5,170	305							
		2	US-220/I-73/I-74 NB	FROM PVMT JT, SOUTH OF SR 2269 (VISION DR) TO PVMT. JT NORTH OF SR 1712 (PINEVIEW ST)	2,4,5	2	MD	NO	YES	NO	3.312	24	340	1.23	3,110	53,255	535	6,915	408							
TOTAL FOR PROJ NO. 2016CPT.08.08.10761											6.512		760	2.74	51,360	53,255	1,070	12,085	713							
50138.3.FS37 (W-5601AJ)	Randolph	1	US-220/I-73/I-74 SB	FROM PVMT JT. NORTH OF SR 1712 (PINEVIEW ST) TO PVMT. JT. SOUTH OF SR 2269 (VISION DR)	1,4	2	MD	NO		NO	3.2	24														
		2	US-220/I-73/I-74 NB	FROM PVMT JT, SOUTH OF SR 2269 (VISION DR) TO PVMT. JT NORTH OF SR 1712 (PINEVIEW ST)	2,4	2	MD	NO		NO	3.312	24														
TOTAL FOR PROJ NO. 50138.3.FS37 (W-5601AJ)											6.512															
52019.3.1 (I-5737)	Randolph	1	US-220/I-73/I-74 SB	FROM PVMT JT. NORTH OF SR 1712 (PINEVIEW ST) TO PVMT. JT. SOUTH OF SR 2269 (VISION DR)	1,4	2	MD	NO		NO	3.2	24									250					
		2	US-220/I-73/I-74 NB	FROM PVMT JT, SOUTH OF SR 2269 (VISION DR) TO PVMT. JT NORTH OF SR 1712 (PINEVIEW ST)	2,4	2	MD	NO		NO	3.312	24										350				
TOTAL FOR PROJ NO. 52019.3.1 (I-5737)											6.512										600					
53006.3.1 (I-5763)	Randolph	3	US 220/ I-73/74 SB	FROM PVT. JT. 3.38 MI S OF GUILFORD CO LINE TO PVT. JT. @ US 311 ENTRANCE RAMP	1,4,5,8	2	MD	NO	YES	NO	4.544	24	340	1.23	69,200			7,225	426	250						
		4	US 220/ I-73/74 NB	FROM PVT. JT. S. OF SR 2270/ US 311 BRIDGE #10 TO EXIT 86-LEVEL CROSS @ BEGIN RAMP MEDIAN S OF US 220BUS	2,4,5,6,7	2	MD	NO	YES	NO	5.8	24	115	0.42	12,800	81,700			8,940	527	100		*			
		4	BRIDGES #231, #233, #235, & #236	BRIDGES ON US 220/I-73/I-74		2	MD	NO		NO		40						200						82,465	1	20
TOTAL FOR MAP NO. 4											5.8		115	0.42	12,800	81,700	200	8,940	527	100			82,465	1	20	
53006.3.1 (I-5763)	Randolph	5	US 220 / I-73/74 NB	FROM EXIT 86-LEVEL CROSS @ BEGIN RAMP MEDIAN S OF US 220 BUS BRIDGE TO GUILFORD COUNTY LINE	3,4,5	2		NO	YES	NO	2.12	38	1,380	4.98	2,340	29,850	300	6,055	357	200	22,400					
		6	US 220 / I-73/74 SB	SB RAMPS AT EXIT #86	4	2	2WU	NO	YES	NO	0.35	24	195	0.70				200	460	27						
TOTAL FOR PROJ NO. 53006.3.1 (I-5763)											12.814		2,030	7.33	84,340	111,550	700	22,680	1,337	550	22,400	1	82,465	1	20	
GRAND TOTAL											19.326		2,790	10.07	135,700	164,805	1,770	34,765	2,050	1,150	22,400	1	82,465	1	20	

PROJECT NO	COUNTY	MAP NO	ROUTE	DESCRIPTION	TYP	LANES	LENGTH MI	WIDTH FT	CLASS III, SURFACE PREPARATION SY	CONCRETE REPAIRS CF	SHOTCRETE REPAIRS CF	EPOXY RESIN INJECTION LF	FOAM JOINT SEALS LS	CLEANING AND REPAINTING OF BRIDGE #231 LS	CLEANING AND REPAINTING OF BRIDGE #233 LS	PAINTING CONTAINMENT FOR BRIDGE #231 LS	PAINTING CONTAINMENT FOR BRIDGE #233 LS	VOLUMETRIC MIXER LS	LATEX MODIFIED CONC OVERLAY - VERY EARLY STRENGTH CY	CONCRETE FOR DECK REPAIR CF	EPOXY COATING SF	BRIDGE JOINT DEMOLITION SF	SCARIFYING BRIDGE DECK SY	HYDRO-DEMOLITION OF BRIDGE DECK SY	PLACING & FINISHING OF LATEX MODIFIED CONC OVERLAY - VERY EARLY STRENGTH SY	
2016CPT.08.08.10761	Randolph	1	US-220/I-73/I-74 SB	FROM PVMT JT. NORTH OF SR 1712 (PINEVIEW ST) TO PVMT. JT. SOUTH OF SR 2269 (VISION DR)	1,4	2	3.2	24																		
		2	US-220/I-73/I-74 NB	FROM PVMT JT, SOUTH OF SR 2269 (VISION DR) TO PVMT. JT NORTH OF SR 1712 (PINEVIEW ST)	2,4,5	2	3.31	24																		
TOTAL FOR PROJ NO. 2016CPT.08.08.10761							6.51																			
50138.3.FS37 (W-5601AJ)	Randolph	1	US-220/I-73/I-74 SB	FROM PVMT JT. NORTH OF SR 1712 (PINEVIEW ST) TO PVMT. JT. SOUTH OF SR 2269 (VISION DR)	1,4	2	3.2	24																		
		2	US-220/I-73/I-74 NB	FROM PVMT JT, SOUTH OF SR 2269 (VISION DR) TO PVMT. JT NORTH OF SR 1712 (PINEVIEW ST)	2,4	2	3.31	24																		
TOTAL FOR PROJ NO. 50138.3.FS37 (W-5601AJ)							6.51																			
52019.3.1 (I-5737)	Randolph	1	US-220/I-73/I-74 SB	FROM PVMT JT. NORTH OF SR 1712 (PINEVIEW ST) TO PVMT. JT. SOUTH OF SR 2269 (VISION DR)	1,4	2	3.2	24																		
		2	US-220/I-73/I-74 NB	FROM PVMT JT, SOUTH OF SR 2269 (VISION DR) TO PVMT. JT NORTH OF SR 1712 (PINEVIEW ST)	2,4	2	3.31	24																		
TOTAL FOR PROJ NO. 52019.3.1 (I-5737)							6.51																			
53006.3.1 (I-5763)	Randolph	3	US 220/ I-73/74 SB	FROM PVT. JT. 3.38 MI S OF GUILFORD CO LINE TO PVT. JT. @ US 311 ENTRANCE RAMP	1,4,5,8	2	4.54	24																		
		4	US 220/ I-73/74 NB	FROM PVT. JT. S. OF SR 2270/ US 311 BRIDGE #10 TO EXIT 86-LEVEL CROSS @ BEGIN RAMP MEDIAN S OF US 220BUS	2,4,5,6,7	2	5.8	24																		
		4	BRIDGES #231, #233, #235, & #236	BRIDGES ON US 220/I-73/I-74	N/A	2		40	20	40	49	451	1	1	1	1	1	1	1	918	4	1,066	434	14,593	14,593	14,593
TOTAL FOR MAP NO. 4							5.8		20	40	49	451	1	1	1	1	1	1	918	4	1,066	434	14,593	14,593	14,593	
53006.3.1 (I-5763)	Randolph	5	US 220 / I-73/74 NB	FROM EXIT 86-LEVEL CROSS @ BEGIN RAMP MEDIAN S OF US 220 BUS BRIDGE TO GUILFORD COUNTY LINE	3,4,5	2	2.12	38																		
		6	US 220 / I-73/74 SB	SB RAMPS AT EXIT #86	4	2	0.35	24																		
TOTAL FOR PROJ NO. 53006.3.1 (I-5763)							12.8		20	40	49	451	1	1	1	1	1	1	918	4	1,066	434	14,593	14,593	14,593	
GRAND TOTAL							19.3		20	40	49	451	1	1	1	1	1	1	918	4	1,066	434	14,593	14,593	14,593	

PROJECT NO.	SHEET NO.	TOTAL NO.
2016CPT.08.08.10761, 50138.3.FS37 (W-5601AJ) 52019.3.1 (I-5737), 53006.3.1 (I-5763)	8	

THERMOPLASTIC AND PAINT QUANTITIES

PROJECT NO	COUNTY	MAP NO	ROUTE	DESCRIPTION	TYP	LANES	LANE TYPE	LENGTH	WIDTH	4413000000	4457000000-N	45100000	4725000000-E				4810000000-E		4847100000-E		4847120000-	4710000000-	4905000000-N				
										WORK ZONE ADVANCE/GENERAL WARNING SIGNING SF	TEMPORARY TRAFFIC CONTROL LS	LAW ENFORCEMENT HR	THERMO MERGE ARROW 90 M EA	THERMO RAMP ARROW 90 M EA	THERMO LT ARROW 90 M EA	THERMO RT ARROW 90 M EA	4" WHITE PAINT LF	4" YELLOW PAINT LF	POLYUREA PAVEMENT MARKING LINES (6", WHITE) (HIGHLY REFLECTIVE ELEMENTS) LF	POLYUREA PAVEMENT MARKING LINES (6", YELLOW) (HIGHLY REFLECTIVE ELEMENTS) LF	POLYUREA PAVEMENT MARKING LINES (12", WHITE) (HIGHLY REFLECTIVE ELEMENTS) LF	24" X 120 M WHITE THERMO LF	SNOW PLOWABLE MARKERS C & R MARKERS EA				
2016CPT.08.08.10761	Randolph	1	US-220/I-73/I-74 SB	FROM PVMT JT. NORTH OF SR 1712 (PINEVIEW ST) TO PVMT. JT. SOUTH OF SR 2269 (VISION DR)	1,4	2	MD	3.2	24	590	*						22,400	17,500									
		2	US-220/I-73/I-74 NB	FROM PVMT JT, SOUTH OF SR 2269 (VISION DR) TO PVMT. JT NORTH OF SR 1712 (PINEVIEW ST)	2,4,5	2	MD	3.312	24	590		40							23,115	18,000							
TOTAL FOR PROJ NO. 2016CPT.08.08.10761																	45,515	35,500									
																81,015											
50138.3.FS37 (W-5601AJ)	Randolph	1	US-220/I-73/I-74 SB		1,4	2	MD	3.2	24		*		9	2					26,395	21,495	1,815		288				
		2	US-220/I-73/I-74 NB	FROM PVMT JT, SOUTH OF SR 2269 (VISION DR) TO PVMT. JT NORTH OF SR 1712 (PINEVIEW ST)	2,4	2	MD	3.312	24			9	2	1	1				23,115	22,430	1,815		318				
TOTAL FOR PROJ NO. 50138.3.FS37 (W-5601AJ)													18	4	1	1			49,510	43,925	3,630		606				
																24		93,435									
52019.3.1 (I-5737)	Randolph	1	US-220/I-73/I-74 SB	FROM PVMT JT. NORTH OF SR 1712 (PINEVIEW ST) TO PVMT. JT. SOUTH OF SR 2269 (VISION DR)	1,4	2	MD	3.2	24		*																
		2	US-220/I-73/I-74 NB	FROM PVMT JT, SOUTH OF SR 2269 (VISION DR) TO PVMT. JT NORTH OF SR 1712 (PINEVIEW ST)	2, 4	2	MD	3.312	24																		
TOTAL FOR PROJ NO. 52019.3.1 (I-5737)																											
53006.3.1 (I-5763)	Randolph	3	US 220/ I-73/74 SB	FROM PVT. JT. 3.38 MI S OF GUILFORD CO LINE TO PVT. JT. @ US 311 ENTRANCE RAMP	1,4,5,8	2	MD	4.544	24	318	*	50		2			31,000	24,500	36,105	29,605	800		340				
		4	US 220/ I-73/74 NB	FROM PVT. JT. S. OF SR 2270/ US 311 BRIDGE #10 TO EXIT 86- LEVEL CROSS @ BEGIN RAMP MEDIAN S OF US 220BUS	2,4,5,6,7	2	MD	5.8	24	238		60	6	2				43,200	35,500	45,095	37,435	1,000	30	435			
		4	BRIDGES #231, #233, #235, & #236	BRIDGES ON US 220/I-73/I-74		2	MD	1	40																		
		TOTAL FOR MAP NO. 4																	60	6	2			43,200	35,500	45,095	37,435
53006.3.1 (I-5763)	Randolph	5	US 220 / I-73/74 NB	FROM EXIT 86- LEVEL CROSS @ BEGIN RAMP MEDIAN S OF US 220 BUS BRIDGE TO GUILFORD COUNTY LINE	3,4,5	2		2.12	38	318	*	20	3	1	1	1	14,400	11,600	16,520	13,720	1325		210				
		6	US 220 / I-73/74 SB	SB RAMPS AT EXIT #86	4	2	2WU	0.35	24	206		20		1						1850	1850						
TOTAL FOR PROJ NO. 53006.3.1 (I-5763)													150	9	6	1	1	88,600	71,600	99,570	82,610	3,125	30	985			
																17		160,200		182,180							
GRAND TOTAL												33.35		2,260	1	230	27	10	2	2	134,115	107,100	149,080	126,535	6,755	30	1,591
																41		241,215					275,615				