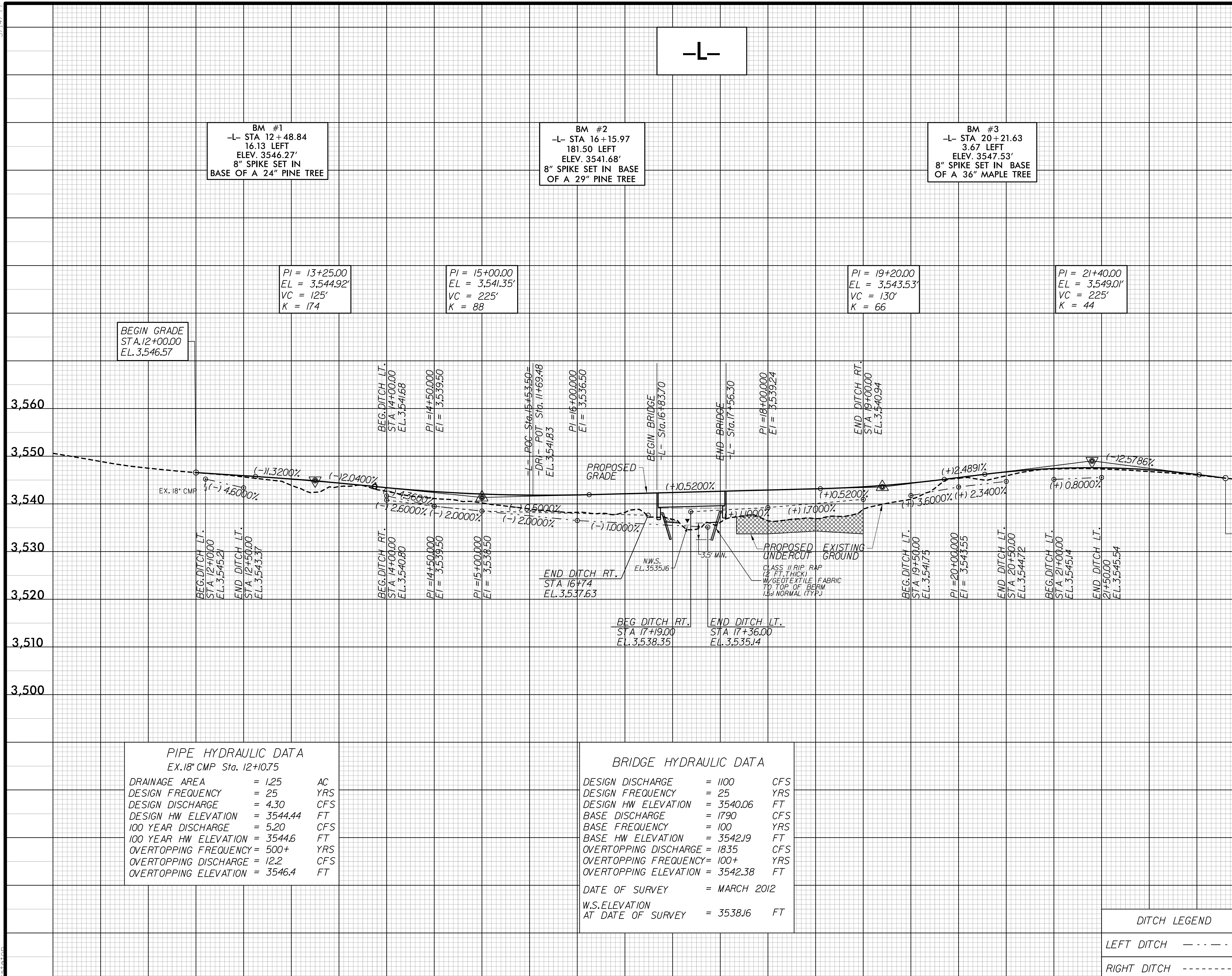


5/14/19

PROJECT REFERENCE NO. B-5404	SHEET NO. 5
ROADWAY DESIGN ENGINEER NORTH CAROLINA PROFESSIONAL SEAL 020031 11/11/2015	HYDRAULICS ENGINEER NORTH CAROLINA PROFESSIONAL SEAL 034333 11/11/2015
Dewberry 2410 WYCLIFF ROAD SUITE 410 RALEIGH, NC 27607 PHONE: 919.881.9939 FAX: 919.881.9929	



BM #1
-L- STA 12+48.84
16.13 LEFT
ELEV. 3546.27'
8" SPIKE SET IN
BASE OF A 24" PINE TREE

BM #2
-L- STA 16+15.97
181.50 LEFT
ELEV. 3541.68'
8" SPIKE SET IN BASE
OF A 29" PINE TREE

BM #3
-L- STA 20+21.63
3.67 LEFT
ELEV. 3547.53'
8" SPIKE SET IN BASE
OF A 36" MAPLE TREE

BEGIN GRADE
STA. 12+00.00
EL. 3,546.57

END GRADE
STA. 22+80.00
EL. 3,545.40

PIPE HYDRAULIC DATA
EX. 18" CMP Sta. 12+10.75

DRAINAGE AREA	= 1.25	AC
DESIGN FREQUENCY	= 25	YRS
DESIGN DISCHARGE	= 4.30	CFS
DESIGN HW ELEVATION	= 3544.44	FT
100 YEAR DISCHARGE	= 5.20	CFS
100 YEAR HW ELEVATION	= 3544.6	FT
OVERTOPPING FREQUENCY	= 500+	YRS
OVERTOPPING DISCHARGE	= 12.2	CFS
OVERTOPPING ELEVATION	= 3546.4	FT

BRIDGE HYDRAULIC DATA

DESIGN DISCHARGE	= 1100	CFS
DESIGN FREQUENCY	= 25	YRS
DESIGN HW ELEVATION	= 3540.06	FT
BASE DISCHARGE	= 1790	CFS
BASE FREQUENCY	= 100	YRS
BASE HW ELEVATION	= 3542.19	FT
OVERTOPPING DISCHARGE	= 1835	CFS
OVERTOPPING FREQUENCY	= 100+	YRS
OVERTOPPING ELEVATION	= 3542.38	FT
DATE OF SURVEY	= MARCH 2012	
W.S. ELEVATION AT DATE OF SURVEY	= 3538.16	FT

DITCH LEGEND

LEFT DITCH	-----
RIGHT DITCH	-----

SEE SHEET 4 FOR -L- PLAN

11/1/2015 10:48:22 AM I:\2015\B5404\1901_PFL_05.dgn