

6/2/09

PROJECT REFERENCE NO.	SHEET NO.
B-5404	1C-1
Location and Surveys	

SURVEY CONTROL SHEET B-5404

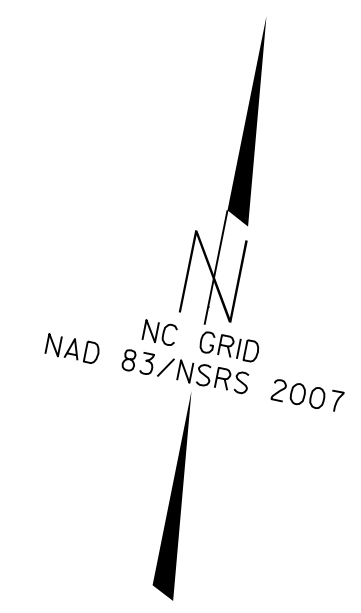
-FINAL-

BL	POINT	DESC.	NORTH	EAST	ELEVATION	L STATION	OFFSET
1	BL-1		548041.0207	750314.8896	3546.20	11+81.24	16.02 RT
2	BL-2		548220.6347	750780.0240	3541.34	16+82.28	19.01 RT
3	BL-3		548278.4225	751094.3847	3544.65	20+03.79	6.21 RT
4	BL-4		548333.8747	751484.1689	3544.36	23+97.50	13.81 RT

 BM1 ELEVATION = 3546.27
 N 548082 E 750376
 L STATION 12+48.84 16.13' LEFT
 8" SPIKE SET IN BASE OF A 24" PINE TREE

 BM2 ELEVATION = 3541.68
 N 548402 E 750669
 L STATION 16+15.97 181.50' LEFT
 8" SPIKE SET IN BASE OF A 29" PINE TREE

 BM3 ELEVATION = 3547.53
 N 548289 E 751112
 L STATION 20+21.63 3.67' LEFT
 8" SPIKE SET IN BASE OF A 36" MAPLE TREE

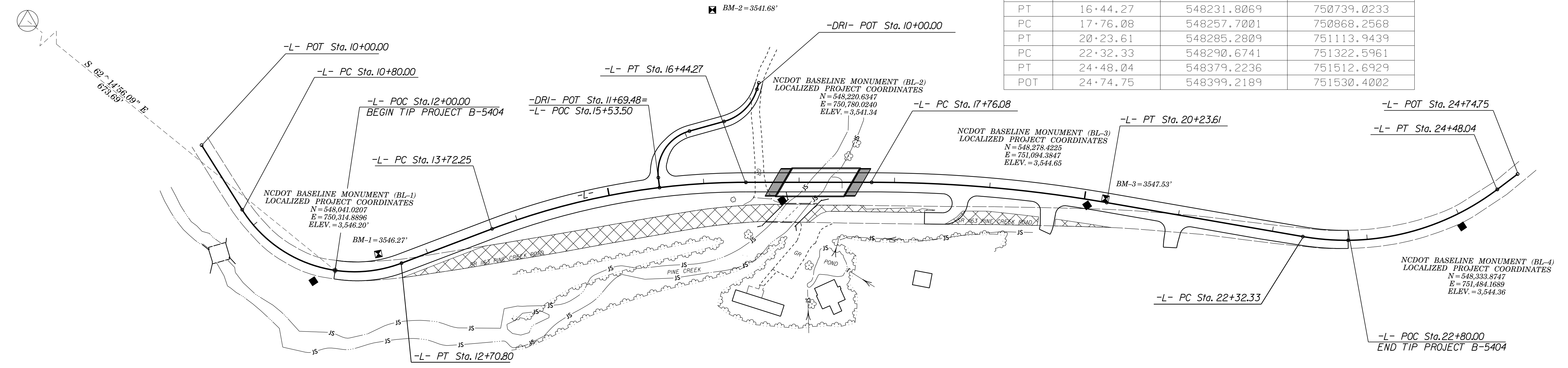


-FINAL- ROW MARKER IRON PIN AND CAP-E

ALIGN	STATION	OFFSET	NORTH	EAST
L	12+00.00	-30.21	548086.8487	750333.4335
L	12+70.80	-66.00	548133.6639	750366.6793
L	13+72.25	-62.00	548184.2061	750454.7429
L	16+44.27	-47.00	548277.8910	750729.7899
L	17+76.08	-47.00	548303.7842	750859.0234
L	20+23.61	-61.00	548346.2606	751112.3677
L	21+90.00	-27.05	548316.6213	751279.5785
L	22+48.40	30.00	548261.6928	751341.2401
L	21+28.24	36.75	548251.2467	751219.4877
L	19+81.23	52.15	548231.4922	751074.4805
L	16+85.06	62.59	548178.4493	750791.3107
L	15+72.14	68.07	548149.1082	750688.8054
L	14+51.63	67.88	548109.2640	750586.8439
L	12+87.19	39.65	548052.8898	750436.7238
L	12+76.71	37.36	548049.2588	750426.6297
L	12+42.13	30.41	548036.6030	750386.6343
L	12+29.87	29.76	548032.6719	750372.2385

FINAL -L-

TYPE	STATION	NORTH	EAST
POT	10+00.00	548157.9425	750171.9570
PC	10+80.00	548099.8782	750226.9892
PT	12+70.80	548077.7603	750401.7619
PC	13+72.25	548131.6906	750487.6992
PT	16+44.27	548231.8069	750739.0233
PC	17+76.08	548257.7001	750868.2568
PT	20+23.61	548285.2809	751113.9439
PC	22+32.33	548290.6741	751322.5961
PT	24+48.04	548379.2236	751512.6929
POT	24+74.75	548399.2189	751530.4002



DATUM DESCRIPTION

THE LOCALIZED COORDINATE SYSTEM DEVELOPED FOR THIS PROJECT IS BASED ON THE STATE PLANE COORDINATES ESTABLISHED BY NCDOT FOR MONUMENT B-5404 (G102) WITH NAD 83/NSRS 2007 STATE PLANE GRID COORDINATES OF NORTHING: 548370.370(ft) EASTING: 749738.774(ft) ELEVATION: 3551.09'(ft)

THE AVERAGE COMBINED GRID FACTOR USED ON THIS PROJECT (GROUND TO GRID) IS: 0.999707899

THE N.C. LAMBERT GRID BEARING AND LOCALIZED HORIZONTAL GROUND DISTANCE FROM "G102" TO -L- STATION 12+00.00 IS
 S62°14'56.09"E 673.69

ALL LINEAR DIMENSIONS ARE LOCALIZED HORIZONTAL DISTANCES
 VERTICAL DATUM USED IS NAVD 88

- NOTES:**
- THE CONTROL DATA FOR THIS PROJECT CAN BE FOUND ELECTRONICALLY BY SELECTING PROJECT CONTROL DATA AT:
[HTTPS://CONNECT.NCDOT.GOV/RESOURCES/LOCATION/](https://connect.ncdot.gov/resources/location/)
 THE FILES TO BE FOUND ARE AS FOLLOWS:
 B5404_LS_CONTROL.TXT
- SITE CALIBRATION INFORMATION HAS NOT BEEN PROVIDED FOR THIS PROJECT. IF FURTHER INFORMATION IS NEEDED, PLEASE CONTACT THE LOCATION AND SURVEYS UNIT.
- INDICATES GEODETIC CONTROL MONUMENTS USED OR SET FOR HORIZONTAL PROJECT CONTROL BY THE NCDOT LOCATION AND SURVEYS UNIT.
 PROJECT CONTROL ESTABLISHED USING GLOBAL POSITIONING SYSTEM.

GEOIDAL MODEL: G09NC
 NOTE: DRAWING NOT TO SCALE

11/10/2015 4:49:43 PM
 I:\Projects\1505404_1a_1c-1.dgn
 1505404_1a_1c-1.dgn