



PAT McCRORY
Governor

NICHOLAS J. TENNYSON
Secretary

January 8, 2016

Addendum No. 1

RE: Contract # C203764

WBS # 2016CPT.08.08.10761, 50138.3.FS37, 52019.3.1, 53006.3.1

F. A. # HSIP-0731(6), NHPP-0073(041), NHPP-0073(042)

Randolph County (W-5601AJ, I-5737, I-5763)

US-220/I-73/I-74 From SR-2269 To SR-1712 And US-220/I-73/I-74

From US-311 To Guilford County Line

January 19, 2016 Letting

To Whom It May Concern:

Reference is made to the plans and proposal form furnished to you on this project.

The following revisions has been made to the Structure plans:

Sheet No.	Revisions
S-2 and S-17	Quantities revised as described below
S-15	Quantities of Elastomeric Concrete revised (not a pay item)

Please void Sheet Nos. S-2, S-15 and S-17 in your plans and staple the revised Sheet Nos. S-2, S-15 and S-17 thereto.

The following revisions have been made to the proposal:

Page No.	Revisions
Proposal Cover	Note added that reads "Includes Addendum No. 1 Dated 01-8-16"
SSP-23	Revised to correct the wage rates listed for "Truck Drivers"

Please void the Proposal Cover and Page No. SSP-23 in your proposal and replace with the revised pages.



On the item sheets the following pay item quantity changes have been made:

<u>Item</u>	<u>Description</u>	<u>Old Quantity</u>	<u>New Quantity</u>
021-8161000000-E-420	Grooving Bridge Floors	82,465 SF	84,362 SF
034-8881000000-E-SP	Latex Modified Concrete- Very Early Strength	918 CY	495 CY
038-8893000000-E-SP	Hydrodemolition Of Bridge Deck	14,593 SY	10,073 SY
039-8893000000-E-SP	Placing & Finishing Latex Modified Concrete Overlay- VES	14,593 SY	10,073 SY
040-8893000000-E-SP	Scarifying Bridge Deck	14,593 SY	10,073 SY

The Contractor's bid must include these pay item quantity changes. The contract will be prepared accordingly.

The Expedite File has been updated to reflect these revisions. Please download the Expedite Addendum File and follow the instructions for applying the addendum. Bid Express will not accept your bid unless the addendum has been applied.

Sincerely,


R. A. Garris, PE
Contract Officer

RAG/jag

cc: Mr. Ron Hancock, PE	Mr. Ray Arnold, PE
Mr. Brandon Jones PE	Ms. Theresa Canales, PE
Mr. Rodger Rochelle, PE	Ms. Marsha Sample
Mr. R.E. Davenport, PE	Mr. Mike Gwyn
Ms. Jaci Kincaid	Ms. Penny Higgins
Project File (2)	Ms. Lori Strickland

STATE OF NORTH CAROLINA
DEPARTMENT OF TRANSPORTATION
RALEIGH, N.C.

PROPOSAL

INCLUDES ADDENDUM No.1 DATED 01-08-16

DATE AND TIME OF BID OPENING: **JANUARY 19, 2016 AT 2:00 PM**

CONTRACT ID C203764
WBS 2016CPT.08.08.10761, 50138.3.FS37, 52019.3.1, 53006.3.1

FEDERAL-AID NO. STATE FUNDED, HSIP-0731(6), NHPP-0073(041), NHPP-0073(042)
COUNTY RANDOLPH
T.I.P. NO. W-5601AJ, I-5737, I-5763
MILES 11.232
ROUTE NO.
LOCATION US-220/I-73/I-74 FROM SR-2269 TO SR-1712 & US-220/I-73/I-74
FROM US-311 TO GUILFORD COUNTY LINE.
TYPE OF WORK PAVEMENT AND BRIDGE REHABILITATION.

NOTICE:

ALL BIDDERS SHALL COMPLY WITH ALL APPLICABLE LAWS REGULATING THE PRACTICE OF GENERAL CONTRACTING AS CONTAINED IN CHAPTER 87 OF THE GENERAL STATUTES OF NORTH CAROLINA WHICH REQUIRES THE BIDDER TO BE LICENSED BY THE N.C. LICENSING BOARD FOR CONTRACTORS WHEN BIDDING ON ANY NON-FEDERAL AID PROJECT WHERE THE BID IS \$30,000 OR MORE, EXCEPT FOR CERTAIN SPECIALTY WORK AS DETERMINED BY THE LICENSING BOARD. BIDDERS SHALL ALSO COMPLY WITH ALL OTHER APPLICABLE LAWS REGULATING THE PRACTICES OF ELECTRICAL, PLUMBING, HEATING AND AIR CONDITIONING AND REFRIGERATION CONTRACTING AS CONTAINED IN CHAPTER 87 OF THE GENERAL STATUTES OF NORTH CAROLINA. NOTWITHSTANDING THESE LIMITATIONS ON BIDDING, THE BIDDER WHO IS AWARDED ANY FEDERAL - AID FUNDED PROJECT SHALL COMPLY WITH CHAPTER 87 OF THE GENERAL STATUTES OF NORTH CAROLINA FOR LICENSING REQUIREMENTS WITHIN 60 CALENDAR DAYS OF BID OPENING.

BIDS WILL BE RECEIVED AS SHOWN BELOW:

THIS IS A ROADWAY & STRUCTURE PROPOSAL

5% BID BOND OR BID DEPOSIT REQUIRED

	Rates	Fringes
Asphalt Screed/Jackman	14.50	
Carpenter Tender	12.51	.27
Cement Mason/Concrete Finisher Tender	11.04	
Common or General	10.40	.01
Guardrail/Fence Installer	13.22	
Pipelayer	12.43	
Traffic Signal/Lighting Installer	15.65	.24
PAINTER		
Bridge	23.77	
POWER EQUIPMENT OPERATORS		
Asphalt Broom Tractor	10.00	
Bulldozer Fine	16.13	
Bulldozer Rough	14.36	
Concrete Grinder/Groover	17.92	
Crane Boom Trucks	18.19	
Crane Other	19.83	
Crane Rough/All-Terrain	19.10	
Drill Operator Rock	14.28	
Drill Operator Structure	20.89	
Excavator Fine	16.95	
Excavator Rough	13.63	
Grader/Blade Fine	19.84	
Grader/Blade Rough	15.47	
Loader 2 Cubic Yards or Less	13.31	
Loader Greater Than 2 Cubic Yards	16.19	
Material Transfer Vehicle (Shuttle Buggy)	15.44	
Mechanic	17.51	
Milling Machine	15.22	
Off-Road Hauler/Water Tanker	11.83	
Oiler/Greaser	14.16	
Pavement Marking Equipment	12.05	
Paver Asphalt	15.97	
Paver Concrete	18.20	
Roller Asphalt Breakdown	12.79	
Roller Asphalt Finish	13.76	
Roller Other	12.08	
Scraper Finish	12.65	
Scraper Rough	11.50	
Slip Form Machine	19.60	
Tack Truck/Distributor Operator	14.82	
TRUCK DRIVER		
GVWR of 26,000 Lbs or Less	11.45	
GVWR of 26,000 Lbs or Greater	13.57	.03

Welders – Receive rate prescribed for craft performing operation to which welding is incidental.

Unlisted classifications needed for work not included within the scope of the classifications listed may be added after award only as provided in the labor standards contract clauses (29 CFR 5.5(a)(1)(ii)).

County: Randolph

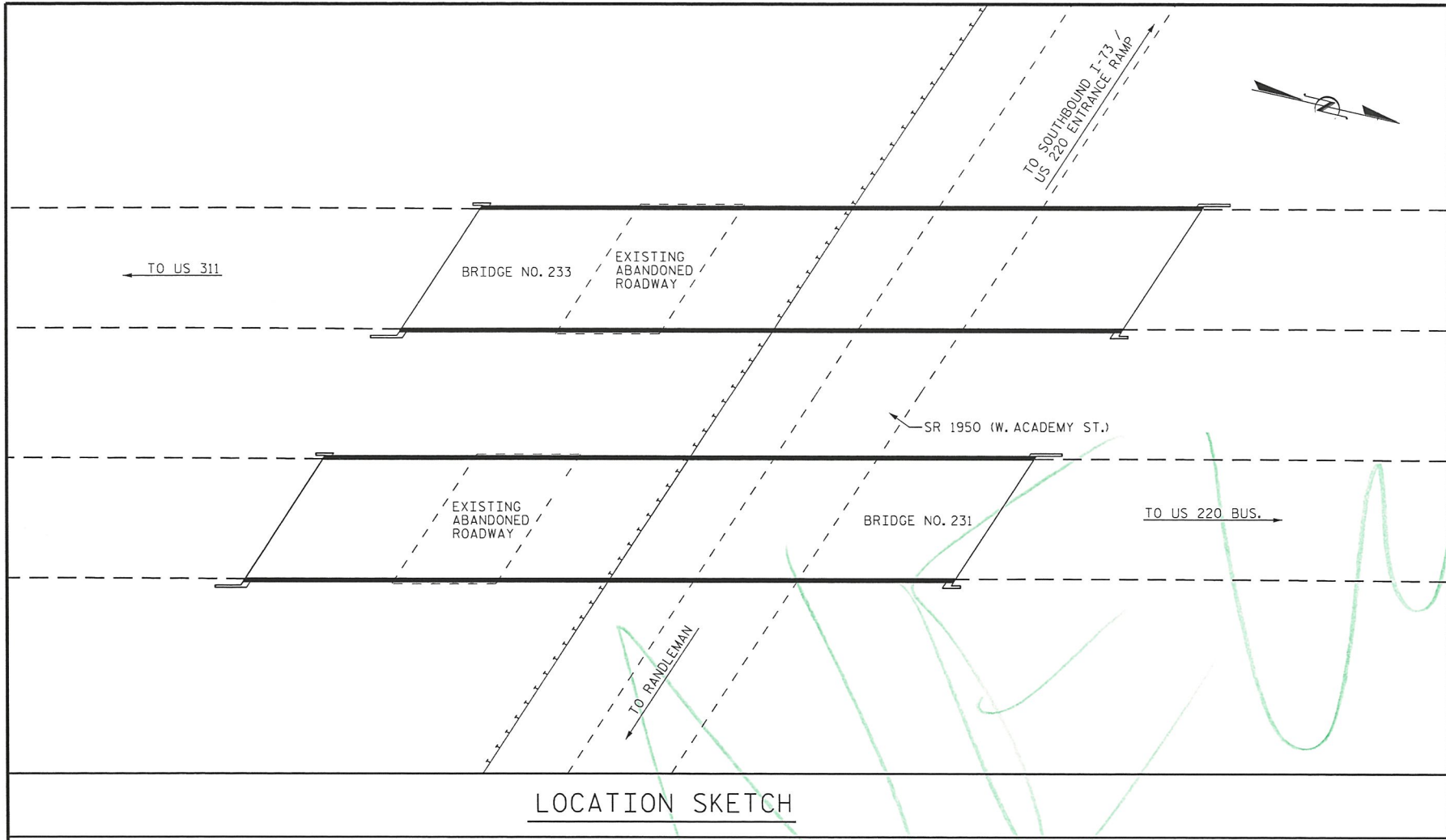
Line #	Item Number	Sec #	Description	Quantity	Unit Cost	Amount
ROADWAY ITEMS						
0001	0000100000-N	800	MOBILIZATION	Lump Sum	L.S.	
0002	0255000000-E	SP	GENERIC GRADING ITEM AGGREGATE SHOULDER BORROW	2,790 TON		
0003	1245000000-E	SP	SHOULDER RECONSTRUCTION	10.07 SMI		
0004	1297000000-E	607	MILLING ASPHALT PAVEMENT, **** DEPTH (1-1/2")	135,700 SY		
0005	1297000000-E	607	MILLING ASPHALT PAVEMENT, **** DEPTH (2")	164,805 SY		
0006	1330000000-E	607	INCIDENTAL MILLING	1,770 SY		
0007	1523000000-E	610	ASPHALT CONC SURFACE COURSE, TYPE S9.5C	34,765 TON		
0008	1575000000-E	620	ASPHALT BINDER FOR PLANT MIX	2,050 TON		
0009	1704000000-E	SP	PATCHING EXISTING PAVEMENT	1,150 TON		
0010	1840000000-E	665	MILLED RUMBLE STRIPS (ASPHALT CONCRETE)	22,400 LF		
0011	4413000000-E	SP	WORK ZONE ADVANCE/GENERAL WARNING SIGNING	2,260 SF		
0012	4457000000-N	SP	TEMPORARY TRAFFIC CONTROL	Lump Sum	L.S.	
0013	4510000000-N	SP	LAW ENFORCEMENT	230 HR		
0014	4710000000-E	1205	THERMOPLASTIC PAVEMENT MARKING LINES (24", 120 MILS)	30 LF		
0015	4725000000-E	1205	THERMOPLASTIC PAVEMENT MARKING SYMBOL (90 MILS)	41 EA		
0016	4810000000-E	1205	PAINT PAVEMENT MARKING LINES (4")	241,215 LF		
0017	4847100000-E	1205	POLYUREA PAVEMENT MARKING LINES (6", *****) (HIGHLY REFLECTIVE ELEMENTS)	275,615 LF		

County: Randolph

Line #	Item Number	Sec #	Description	Quantity	Unit Cost	Amount
0018	4847120000-E	1205	POLYUREA PAVEMENT MARKING LINES (12", *****) (HIGHLY REFLECTIVE ELEMENTS)	6,755 LF		
0019	4905000000-N	1253	SNOWPLOWABLE PAVEMENT MARKERS	1,591 EA		
0020	5255000000-N	1413	PORTABLE LIGHTING	Lump Sum	L.S.	
0021	8161000000-E	420	GROOVING BRIDGE FLOORS	84,362 SF		
0022	8296000000-N	442	POLLUTION CONTROL	Lump Sum	L.S.	
0023	8559000000-E	SP	CLASS II, SURFACE PREPARATION	20 SY		
0024	8566000000-E	SP	CLASS III, SURFACE PREPARATION	20 SY		
0025	8660000000-E	SP	CONCRETE REPAIRS	40 CF		
0026	8664000000-E	SP	SHOTCRETE REPAIRS	49 CF		
0027	8678000000-E	SP	EPOXY RESIN INJECTION	451 LF		
0028	8692000000-N	SP	FOAM JOINT SEALS	Lump Sum	L.S.	
0029	8860000000-N	SP	GENERIC STRUCTURE ITEM CLEANING AND PAINTING OF BRIDGE #231	Lump Sum	L.S.	
0030	8860000000-N	SP	GENERIC STRUCTURE ITEM CLEANING AND PAINTING OF BRIDGE #233	Lump Sum	L.S.	
0031	8860000000-N	SP	GENERIC STRUCTURE ITEM PAINTING CONTAINMENT FOR BRIDGE #231	Lump Sum	L.S.	
0032	8860000000-N	SP	GENERIC STRUCTURE ITEM PAINTING CONTAINMENT FOR BRIDGE #233	Lump Sum	L.S.	
0033	8860000000-N	SP	GENERIC STRUCTURE ITEM VOLUMETRIC MIXER	Lump Sum	L.S.	
0034	8881000000-E	SP	GENERIC STRUCTURE ITEM LATEX MODIFIED CONCRETE - VERY EARLY STRENGTH	495 CY		

County: Randolph

Line #	Item Number	Sec #	Description	Quantity	Unit Cost	Amount
0035	8882000000-E	SP	GENERIC STRUCTURE ITEM CONCRETE FOR DECK REPAIR	4 CF		
0036	8892000000-E	SP	GENERIC STRUCTURE ITEM BRIDGE JOINT DEMOLITION	434 SF		
0037	8892000000-E	SP	GENERIC STRUCTURE ITEM EPOXY COATING	1,066 SF		
0038	8893000000-E	SP	GENERIC STRUCTURE ITEM HYDRO-DEMOLITION OF BRIDGE DECK	10,073 SY		
0039	8893000000-E	SP	GENERIC STRUCTURE ITEM PLACING & FINISHING LATEX MOD- IFIED CONC OVERLAY - VES	10,073 SY		
0040	8893000000-E	SP	GENERIC STRUCTURE ITEM SCARIFYING BRIDGE DECK	10,073 SY		
1430/Jan07/Q1010347.07/D234347320000/E40			Total Amount Of Bid For Entire Project :			



NOTES:

- INFORMATION INDICATED ON THE LOCATION SKETCH SHALL BE CONSIDERED GENERAL INFORMATION ONLY. CONTRACTOR SHALL CONFIRM, THROUGH OTHER SOURCES, SPECIFIC INFORMATION REGARDING THE BRIDGES, ROADWAYS, UTILITIES, THE SURROUNDING AREA, AND ANY OTHER ASPECTS THAT MAY BE NECESSARY TO PERFORM AND COMPLETE THE PROJECT.
- EXISTING DIMENSIONS AND BRIDGE CONDITION ARE FROM BEST INFORMATION AVAILABLE. THE CONTRACTOR SHALL FIELD VERIFY THE INFORMATION SHOWN ON THE PLANS AND NOTIFY THE ENGINEER IF ACTUAL DIMENSIONS AND CONDITIONS DIFFER.
- IT IS THE CONTRACTOR'S RESPONSIBILITY TO FOLLOW ALL STATE AND FEDERAL SAFETY REQUIREMENTS.
- THE CONTRACTOR MUST COLLECT, TREAT AND DISPOSE OF RUN-OFF WATER FROM THE HYDRO-DEMOLITION PROCESS, SEE MANAGING HYDRO-DEMOLITION WATER SPECIAL PROVISION.
- EXISTING JOINTS AND DECK DRAINS SHALL BE SEALED PRIOR TO BEGINNING SURFACE PREPARATION OF BRIDGE DECK.
- DURING CONSTRUCTION, BERMS OR APPROPRIATE MEASURES SHALL BE USED TO ENSURE HYDRO-DEMOLITION WATER DOES NOT FLOW OR MIGRATE INTO ACTIVE TRAVEL LANES.
- THE CONTRACTOR SHALL PROVIDE A METHOD OF HANDLING UNEXPECTED BLOW THROUGH OF THE DECK.
- LONGITUDINAL CONSTRUCTION JOINTS OF OVERLAYS SHALL BE LOCATED ALONG THE CENTERLINE OR EDGE OF TRAVEL LANES.
- FOR SCARIFYING BRIDGE DECK, HYDRO-DEMOLITION OF BRIDGE DECK, CLASS II SURFACE PREPARATION, AND CLASS III SURFACE PREPARATION, SEE OVERLAY SURFACE PREPARATION SPECIAL PROVISION.
- FOR CONTROL OF TRAFFIC AND LIMITS ON PHASING OF CONSTRUCTION, SEE TRANSPORTATION MANAGEMENT PLAN.
- FOR BRIDGE JOINT DEMOLITION, SEE SPECIAL PROVISIONS.
- FOR LATEX MODIFIED CONCRETE-VERY EARLY STRENGTH, SEE SPECIAL PROVISIONS.
- FOR FOAM JOINT SEALS, SEE SPECIAL PROVISIONS.
- FOR ELASTOMERIC CONCRETE, SEE SPECIAL PROVISIONS.
- FOR SUBMITTAL OF WORKING DRAWINGS, SEE SPECIAL PROVISIONS.
- FOR FALSEWORK AND FORMWORK, SEE SPECIAL PROVISIONS.
- FOR CRANE SAFETY, SEE SPECIAL PROVISIONS.
- FOR GROUT FOR STRUCTURES, SEE SPECIAL PROVISIONS.
- FOR CONCRETE DECK REPAIR, SEE SPECIAL PROVISION.
- FOR VOLUMETRIC MIXER, SEE SPECIAL PROVISIONS.
- FOR PAINTING EXISTING STRUCTURE, SEE SPECIAL PROVISIONS.

LOCATION SKETCH

TOTAL BILL OF MATERIAL														
BRIDGE NO.	GROOVING BRIDGE FLOORS	POLLUTION CONTROL	* CLASS II SURFACE PREPARATION	* CLASS III SURFACE PREPARATION	** LATEX MODIFIED CONCRETE OVERLAY- VES	PLACING & FINISHING OF LATEX MODIFIED CONCRETE OVERLAY- VES	CLEANING AND PAINTING OF BRIDGE *---	PAINT CONTAINMENT FOR BRIDGE *---	FOAM JOINT SEALS	* VOLUMETRIC MIXER	* CONCRETE FOR DECK REPAIR	BRIDGE JOINT DEMOLITION	SCARIFYING BRIDGE DECK	HYDRO-DEMOLITION OF BRIDGE DECK
	SO. FT.	LUMP SUM	SO.YDS.	SO. YDS.	C.Y.	SO.YDS.	LUMP SUM	LUMP SUM	LUMP SUM	LUMP SUM	CU. FT.	SO. FT.	SO.YDS.	SO.YDS.
231	15,134	LUMP SUM	4	4	87	1781	LUMP SUM	LUMP SUM	LUMP SUM	LUMP SUM	1	106	1781	1781
233	15,348	LUMP SUM	4	4	90	1806	LUMP SUM	LUMP SUM	LUMP SUM	LUMP SUM	1	106	1806	1806
TOTAL	30,482	LUMP SUM	8	8	177	3587	LUMP SUM	LUMP SUM	LUMP SUM	LUMP SUM	2	212	3587	3587

* CLASS II AND CLASS III SURFACE PREPARATION, VOLUMETRIC MIXER, AND CONCRETE FOR DECK REPAIR ARE NOT ANTICIPATED. TOKEN PAY ITEMS ARE INDICATED FOR PRICING PURPOSES. IN CASE UNANTICIPATED CLASS III SURFACE PREPARATION AREAS ARE ENCOUNTERED.

** THE QUANTITY OF LATEX MODIFIED CONCRETE OVERLAY - VES INCLUDES THE 4" OVERLAP BETWEEN OVERLAYS.

PROJECT NO. I-5763
RANDOLPH COUNTY
 BRIDGE NO. 231 & 233

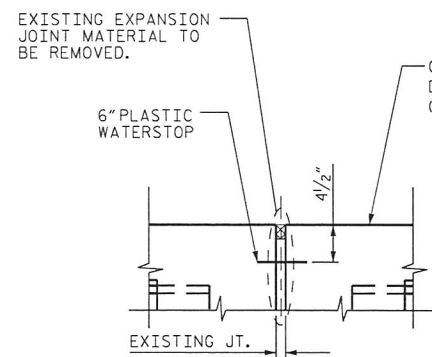
SHEET 2 OF 2



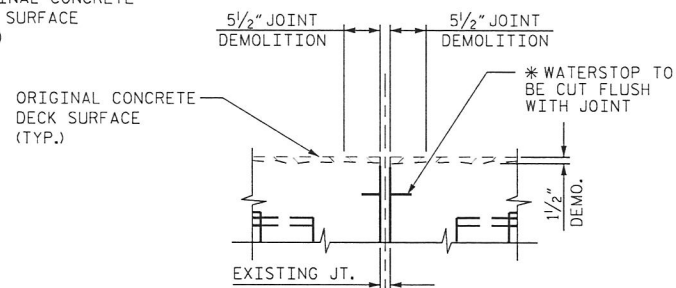
STATE OF NORTH CAROLINA
 DEPARTMENT OF TRANSPORTATION
RALEIGH
 GENERAL DRAWING
 BRIDGE OVER SR 1950
 ON I-73/US 220
 BETWEEN US 311 AND
 US 220 BUS.

REVISIONS						SHEET NO.
NO.	BY:	DATE:	NO.	BY:	DATE:	S-2
1			3			TOTAL SHEETS
2			4			48

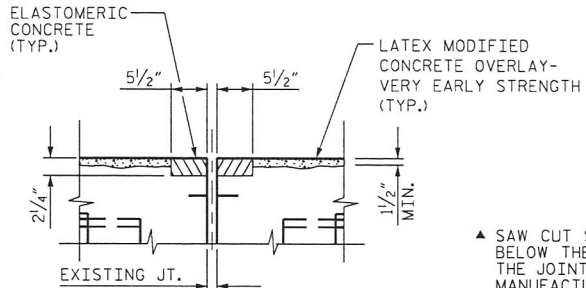
DRAWN BY : D.V. JOYNER DATE : 08/15
 CHECKED BY : W. SMITH DATE : 08/15



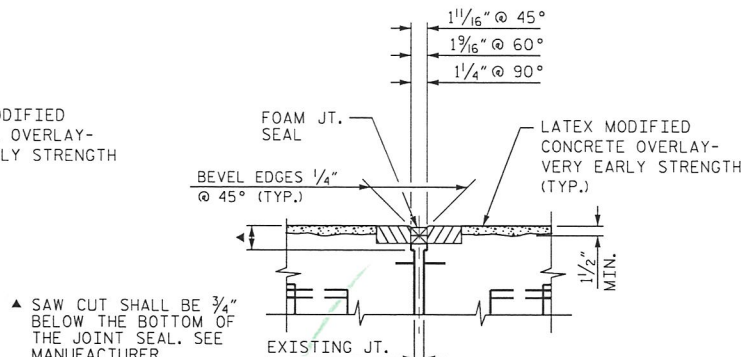
EXISTING JOINT



MINIMUM EXISTING JOINT DEMOLITION



PROPOSED JOINT PRE-SAWED DIMENSIONS



PROPOSED FOAM JOINT SEAL EXPANSION

JOINT INSTALLATION SEQUENCE AT BENTS

SECTION B-B

NOTES:

CONTRACTOR SHALL FIELD VERIFY THE EXISTING FORMED OPENING PRIOR TO OBTAINING JOINT MATERIAL.

IF THE EMBEDDED PORTION OF THE EXISTING PLASTIC WATERSTOP IS EXPOSED DURING REMOVAL OF UNSOUND CONCRETE OR IF UNSOUND CONCRETE IS REMOVED TO WITHIN 2" OF THE WATERSTOP, THE ENTIRE WATERSTOP SHALL BE REMOVED.

HYDRO-DEMOLITION OR EXCAVATION OF CONCRETE AT THE EXISTING JOINT SHALL RESULT IN THE BOTTOM OF THE EXCAVATION BEING REASONABLY FLAT, TO PROVIDE SUFFICIENT SUBSTRATE FOR PLACEMENT AND SUPPORT OF ELASTOMERIC CONCRETE.

FOR FOAM JOINT SEALS, SEE SPECIAL PROVISIONS.

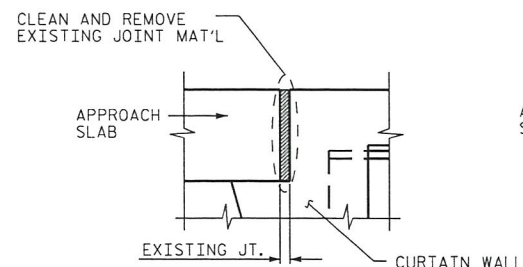
FOR ELASTOMERIC CONCRETE, SEE SPECIAL PROVISIONS.

RETAIN ALL EXISTING REINFORCING STEEL, CLEAN AND REPAIR AS NEEDED.

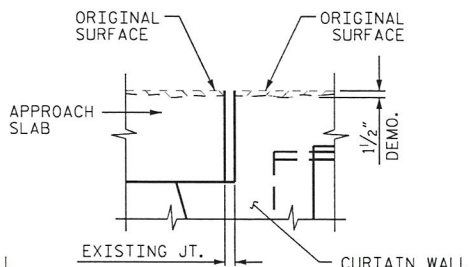
THE WIDTH OF THE UNCOMPRESSED FOAM JOINT MATERIAL SHALL BE 2".

ELASTOMERIC CONCRETE	
BRIDGE 231	22 CU. FT.
BRIDGE 233	22 CU. FT.
* TOTAL	44 CU. FT.

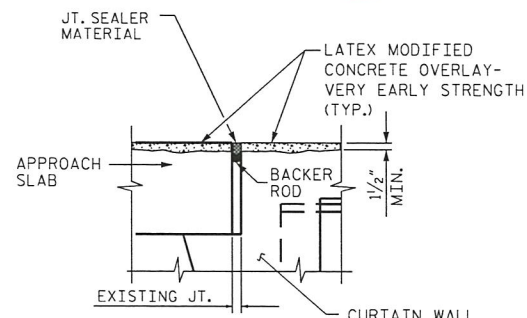
* BASED ON THE MINIMUM BLOCKOUT SHOWN.



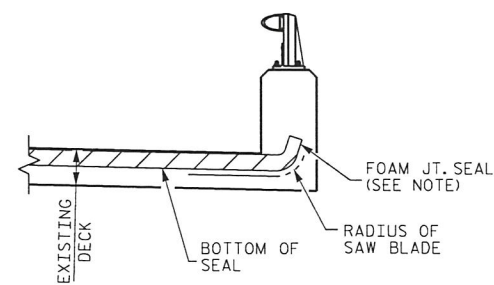
EXISTING COLD JOINT



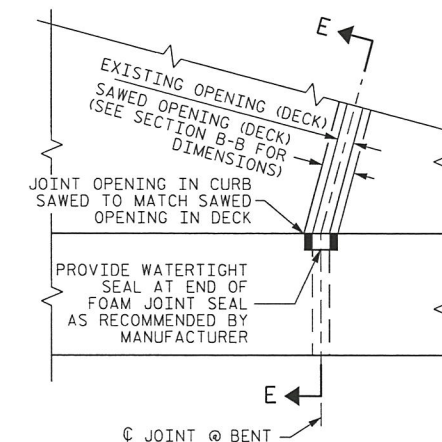
MINIMUM EXISTING JOINT DEMOLITION



PROPOSED JOINT



SECTION E-E



JOINT SEAL DETAILS AT BENT

JOINT INSTALLATION SEQUENCE AT END BENTS

SECTION A-A

PROJECT NO. I-5763
RANDOLPH COUNTY
 BRIDGE NO.: 231 & 233

STATE OF NORTH CAROLINA DEPARTMENT OF TRANSPORTATION RALEIGH				SHEET NO.
SUPERSTRUCTURE JOINT DETAILS				S-15
REVISIONS				TOTAL SHEETS
NO.	BY:	DATE:	NO.	DATE:
1			3	
2			4	
				48



DRAWN BY : D.V. JOYNER DATE : 9/2015
 CHECKED BY : W. SMITH DATE : 9/2015

NOTES:

INFORMATION INDICATED ON THE LOCATION SKETCH SHALL BE CONSIDERED GENERAL INFORMATION, ONLY. CONTRACTOR SHALL CONFIRM, THROUGH OTHER SOURCES, SPECIFIC INFORMATION REGARDING THE BRIDGES, ROADWAYS, UTILITIES, THE SURROUNDING AREA, AND ANY OTHER ASPECTS THAT MAY BE NECESSARY TO PERFORM AND COMPLETE THE PROJECT.

EXISTING DIMENSIONS AND BRIDGE CONDITION ARE FROM BEST INFORMATION AVAILABLE. THE CONTRACTOR SHALL FIELD VERIFY THE INFORMATION SHOWN ON THE PLANS AND NOTIFY THE ENGINEER IF ACTUAL DIMENSIONS AND CONDITIONS DIFFER.

IT IS THE CONTRACTOR'S RESPONSIBILITY TO FOLLOW ALL STATE AND FEDERAL SAFETY REQUIREMENTS.

THE CONTRACTOR MUST COLLECT, TREAT AND DISPOSE OF RUN-OFF WATER FROM THE HYDRO-DEMOLITION PROCESS, SEE MANAGING HYDRO-DEMOLITION WATER SPECIAL PROVISION.

EXISTING JOINTS AND DECK DRAINS SHALL BE SEALED PRIOR TO BEGINNING SURFACE PREPARATION OF BRIDGE DECK.

DURING CONSTRUCTION, BERMS OR APPROPRIATE MEASURES SHALL BE USED TO ENSURE HYDRO-DEMOLITION WATER DOES NOT FLOW OR MIGRATE INTO ACTIVE TRAVEL LANES.

THE CONTRACTOR SHALL PROVIDE A METHOD OF HANDLING UNEXPECTED BLOW THROUGH OF THE DECK.

LONGITUDINAL CONSTRUCTION JOINTS OF OVERLAYS SHALL BE LOCATED ALONG THE CENTERLINE OR EDGE OF TRAVEL LANES.

FOR SCARIFYING BRIDGE DECK, HYDRO-DEMOLITION OF BRIDGE DECK, CLASS II SURFACE PREPARATION, AND CLASS III SURFACE PREPARATION, SEE OVERLAY SURFACE PREPARATION SPECIAL PROVISION.

FOR CONTROL OF TRAFFIC AND LIMITS ON PHASING OF CONSTRUCTION, SEE TRANSPORTATION MANAGEMENT PLAN.

FOR BRIDGE JOINT DEMOLITION, SEE SPECIAL PROVISIONS.

FOR LATEX MODIFIED CONCRETE OVERLAY - VERY EARLY STRENGTH, SEE SPECIAL PROVISIONS.

FOR FOAM JOINT SEALS, SEE SPECIAL PROVISIONS.

FOR ELASTOMERIC CONCRETE, SEE PROVISIONS.

FOR SUBMITTAL OF WORKING DRAWINGS, SEE SPECIAL PROVISIONS.

FOR FALSEWORK AND FORMWORK, SEE SPECIAL PROVISIONS.

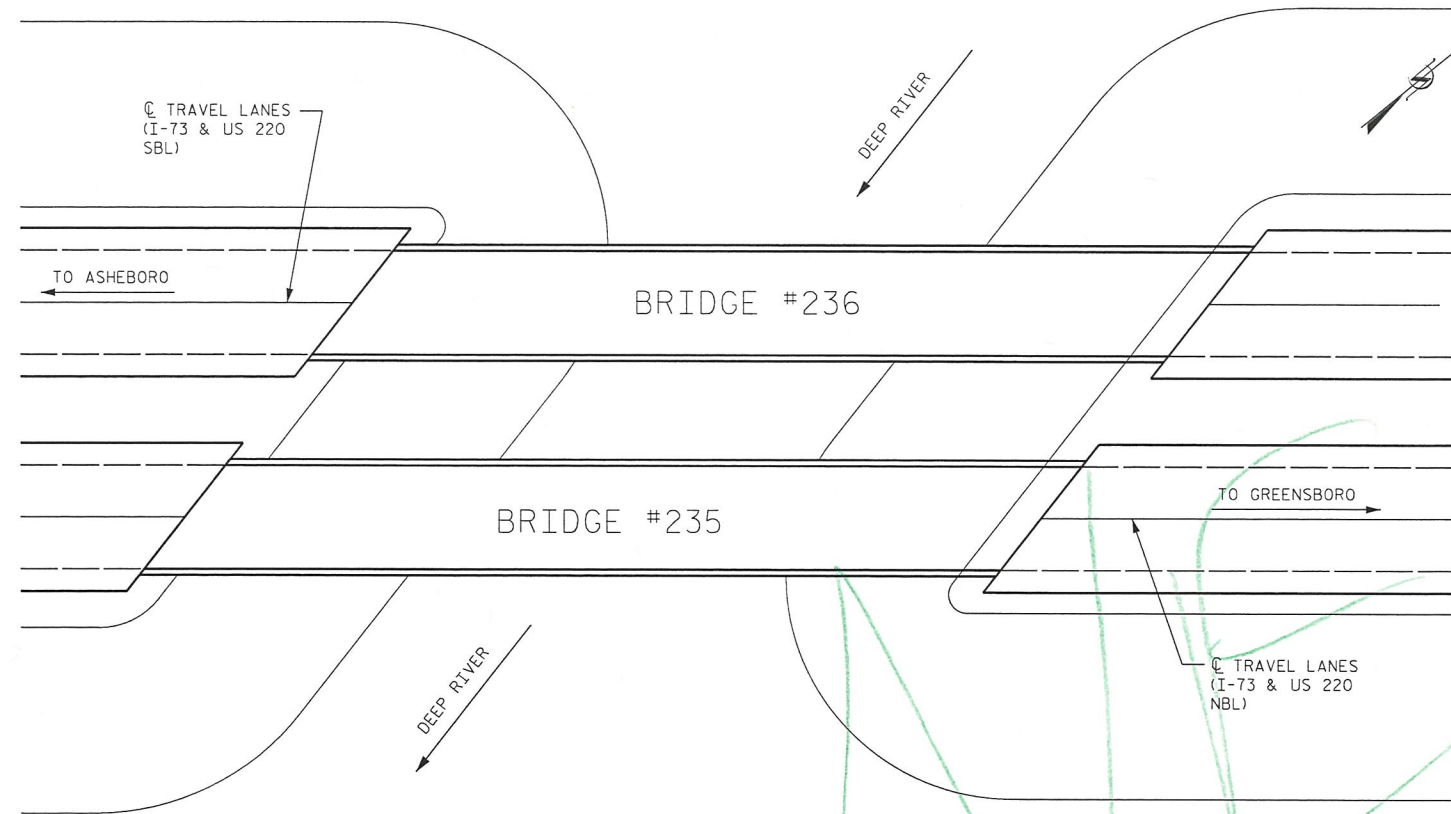
FOR CRANE SAFETY, SEE SPECIAL PROVISIONS.

FOR GROUT FOR STRUCTURES, SEE SPECIAL PROVISIONS.

FOR VOLUMETRIC MIXER, SEE SPECIAL PROVISIONS.

FOR CONCRETE DECK REPAIR, SEE SPECIAL PROVISIONS.

FOR PAINTING EXISTING STRUCTURE, SEE SPECIAL PROVISIONS.



LOCATION SKETCH

TOTAL BILL OF MATERIAL

BRIDGE NO.	INCIDENTAL MILLING	GROOVING BRIDGE FLOORS	* CLASS II SURFACE PREPARATION	* CLASS III SURFACE PREPARATION	** LATEX MODIFIED CONCRETE OVERLAY - VES	PLACING & FINISHING OF LATEX MODIFIED CONCRETE OVERLAY - VES	CONCRETE REPAIR	SHOTCRETE REPAIR	EPOXY RESIN INJECTION	FOAM JOINT SEALS	* VOLUMETRIC MIXER	* CONCRETE FOR DECK REPAIR	BRIDGE JOINT DEMOLITION	EPOXY COATING	SCARIFYING BRIDGE DECK	HYDRO-DEMOLITION OF BRIDGE DECK
	SO. YDS.	SO. FT.	SO. YDS.	SO. YDS.	C.Y.	SO. YDS.	CU. FT.	CU. FT.	LN. FT.	LUMP SUM	LUMP SUM	CU. FT.	SO. FT.	SO. FT.	SO. YDS.	SO. YDS.
235	40	26,940	6	6	159	3243	0	15	191	LUMP SUM	LUMP SUM	1	111	533	3243	3243
236	0	26,940	6	6	159	3243	40	34	260	LUMP SUM	LUMP SUM	1	111	533	3243	3243
TOTAL	40	53,880	12	12	318	6486	40	49	451	LUMP SUM	LUMP SUM	2	222	1066	6486	6486

* CLASS II AND CLASS III SURFACE PREPARATION, VOLUMETRIC MIXER AND CONCRETE FOR DECK REPAIR ARE NOT ANTICIPATED. TOKEN PAY ITEMS ARE INDICATED FOR PRICING PURPOSES. IN CASE UNANTICIPATED CLASS III SURFACE PREPARATION AREAS ARE ENCOUNTERED.

** THE QUANTITY OF LATEX MODIFIED CONCRETE OVERLAY - VES INCLUDES THE 4" OVERLAP BETWEEN OVERLAYS.

PROJECT NO. I-5763
RANDOLPH COUNTY
 BRIDGE NO. 235 & 236

SHEET 2 OF 2



STATE OF NORTH CAROLINA
 DEPARTMENT OF TRANSPORTATION
 RALEIGH

GENERAL DRAWING
 BRIDGE #235 & #236 ON I-73
 & US 220
 OVER DEEP RIVER

REVISIONS						SHEET NO.
NO.	BY:	DATE:	NO.	BY:	DATE:	
1			3			S-17
2			4			TOTAL SHEETS 48

DRAWN BY : M. WELDON DATE : 08/2015
 CHECKED BY : W. SMITH DATE : 08/2015