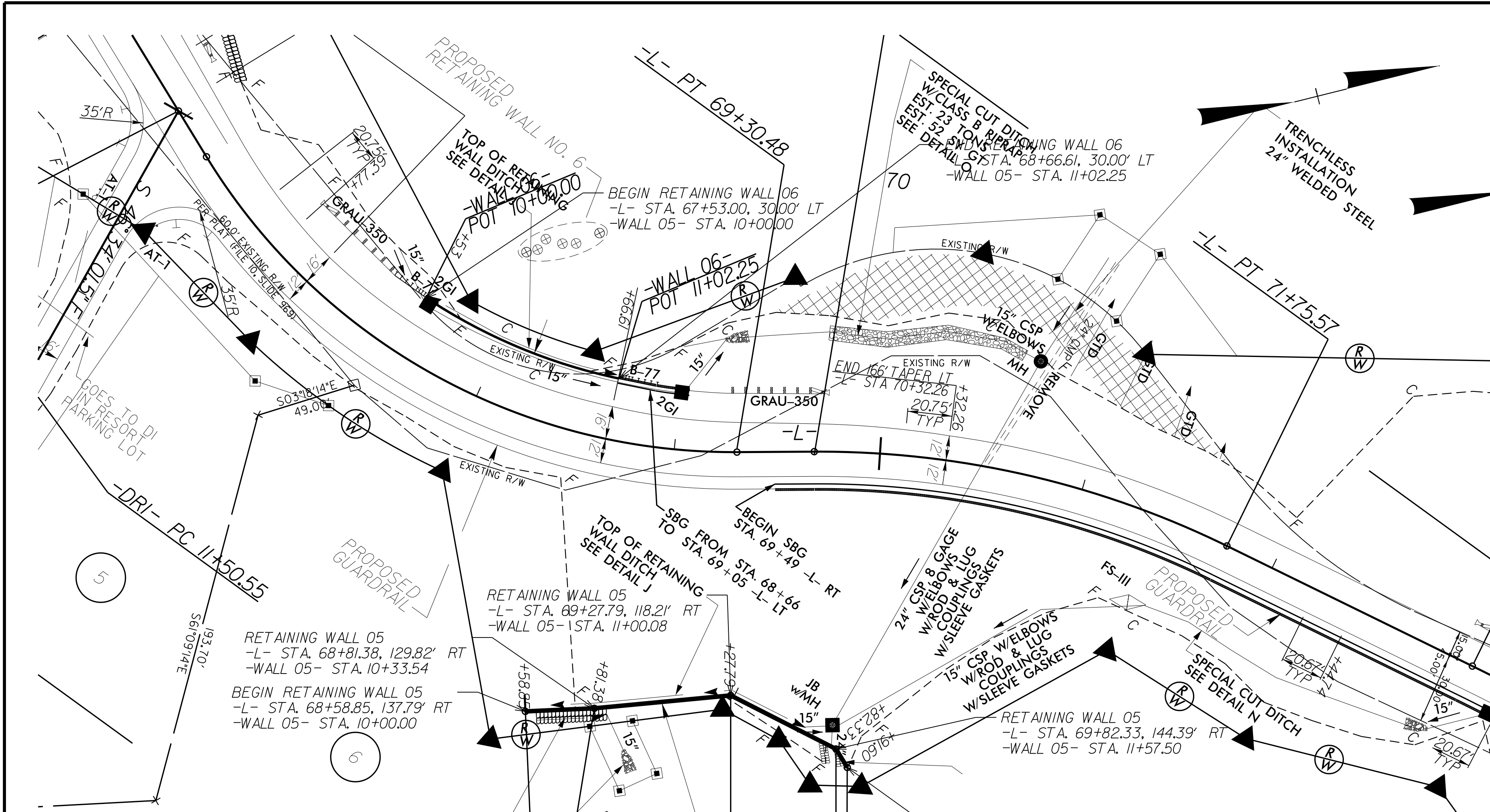




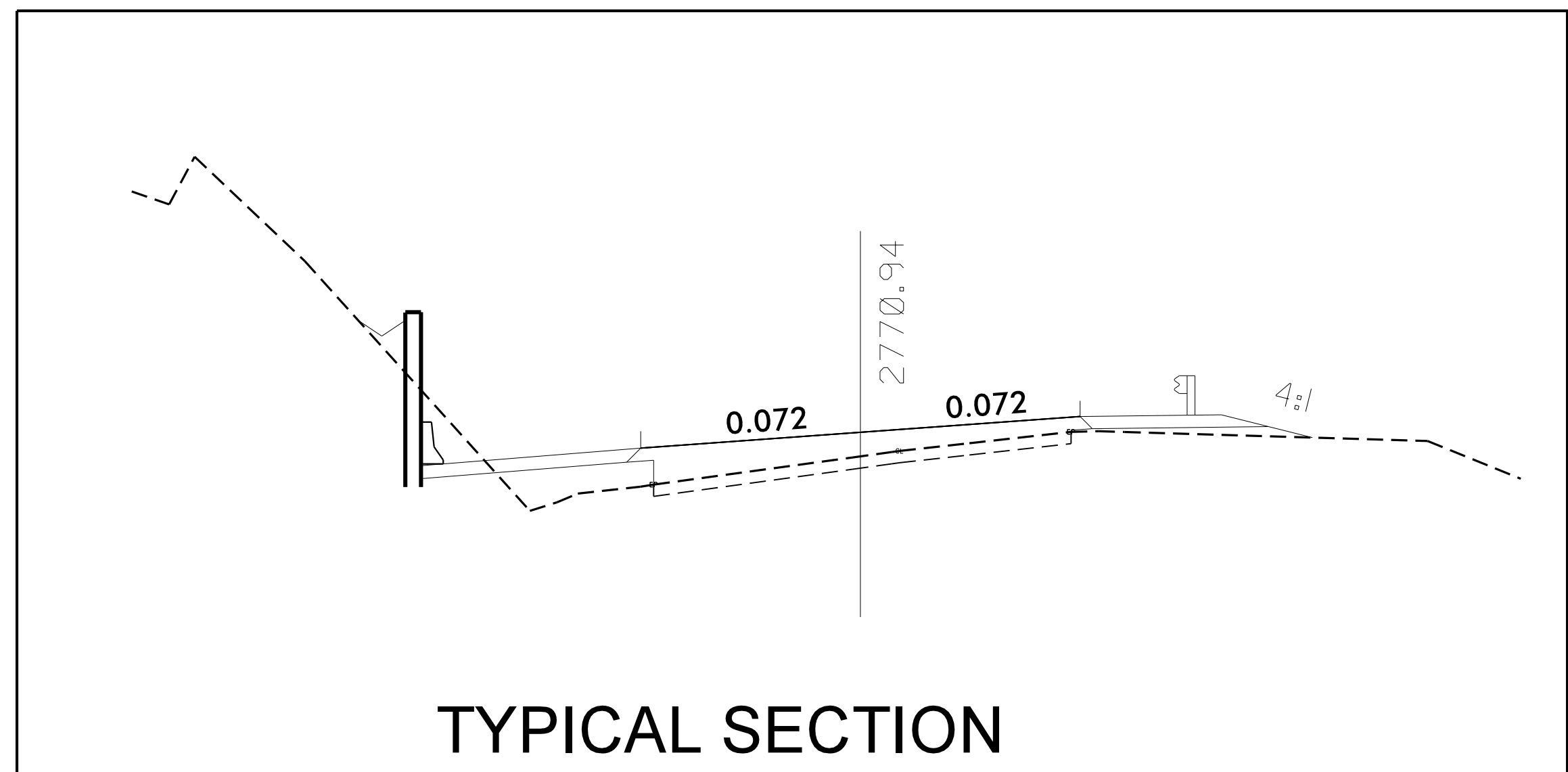
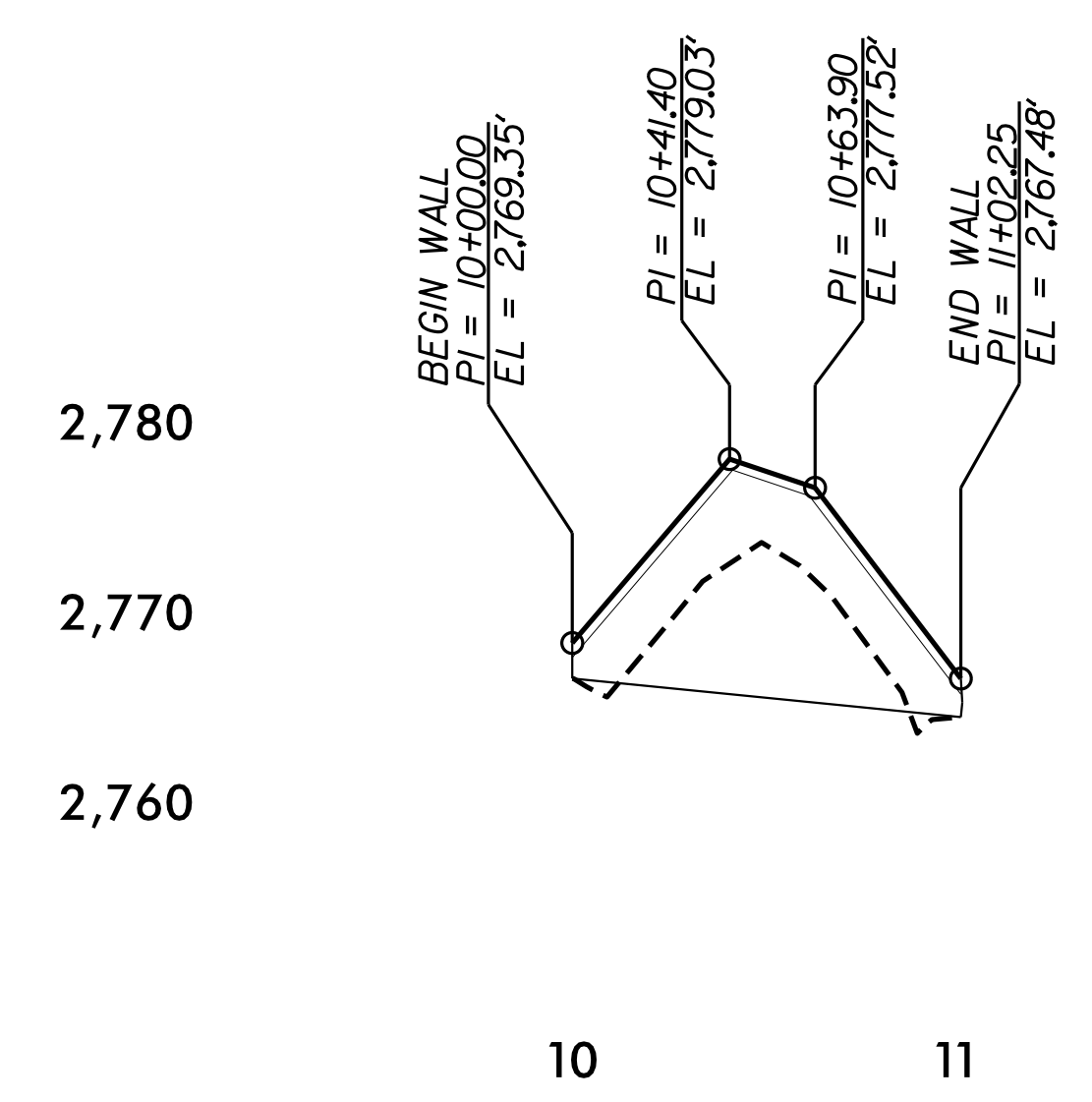
DocuSigned by: Shane C. Clark 10/27/2015

SIGNATURE DATE



ESTIMATED SOLDIER PILE WALL QUANTITIES	
RETAINING WALL NO.	SOLDIER PILE RETAINING WALL (SQUARE FEET)
6	825

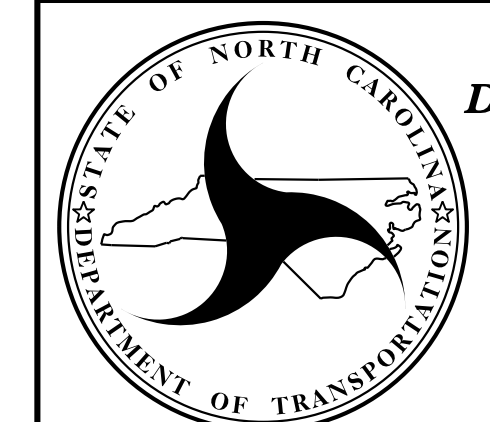
WALL ENVELOPE



TYPICAL SECTION

WALL ENVELOPE

PROJECT NO.: R-2409C
 TRANSYLVANIA COUNTY
 STATION: 67+53.00 -L- to 68+66.61 -L-
 SHEET 1 OF 2



NORTH CAROLINA
 DEPARTMENT OF TRANSPORTATION
 DIVISION OF HIGHWAYS
 GEOTECHNICAL
 ENGINEERING UNIT

SOLDIER PILE RETAINING WALL WALL #6

REVISIONS						SHEET NO.
NO.	BY	DATE	NO.	BY	DATE	
1			3			W-9
2			4			

PREPARED BY: EJS DATE: 10/15
 REVIEWED BY: SCC DATE: 10/15