

LEGEND

- EXISTING JOINT POWER AND TELEPHONE POLE
- PROPOSED JOINT POWER, TELEPHONE POLE, & CATV POLE
- EXISTING TELEPHONE POLE
- PROPOSED TELEPHONE AND CATV POLE
- EXISTING POWER POLE
- PROPOSED POWER POLE
- EXISTING OVERHEAD POWER LINES
- PROPOSED OVERHEAD POWER LINES
- EXISTING OVERHEAD TELEPHONE LINES
- PROPOSED OVERHEAD TELEPHONE AND CATV LINES
- PROPOSED O/H POWER, TELEPHONE, AND CATV LINES

CH ENGINEERING

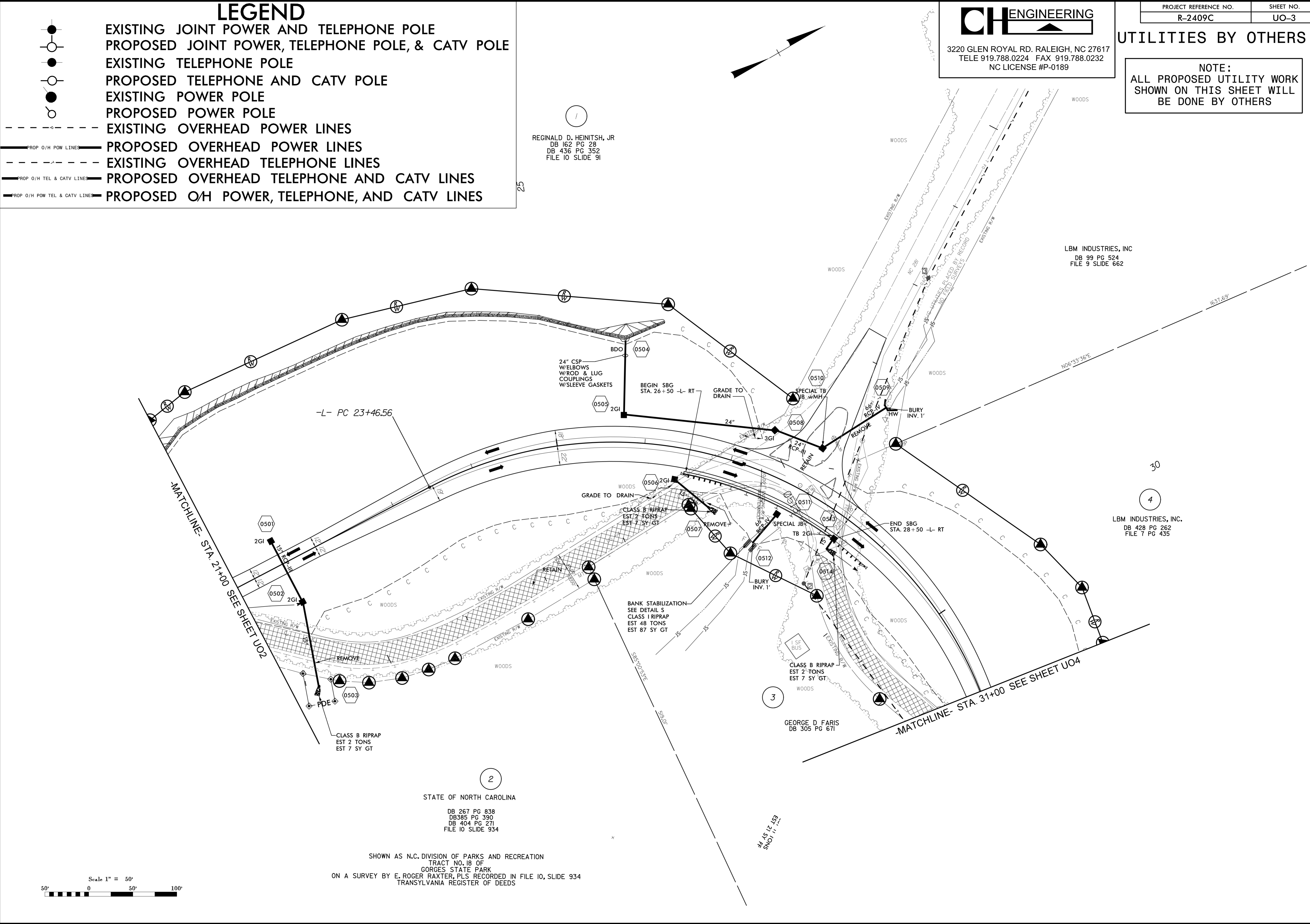
3220 GLEN ROYAL RD. RALEIGH, NC 27617
 TELE 919.788.0224 FAX 919.788.0232
 NC LICENSE #P-0189

PROJECT REFERENCE NO. R-2409C	SHEET NO. UO-3
----------------------------------	-------------------

UTILITIES BY OTHERS

NOTE:
ALL PROPOSED UTILITY WORK
SHOWN ON THIS SHEET WILL
BE DONE BY OTHERS

REGINALD D. HEINITSH, JR
 DB 162 PG 28
 DB 436 PG 352
 FILE 10 SLIDE 91



LBM INDUSTRIES, INC
 DB 99 PG 524
 FILE 9 SLIDE 662

LBM INDUSTRIES, INC.
 DB 428 PG 262
 FILE 7 PG 435

2
 STATE OF NORTH CAROLINA
 DB 267 PG 838
 DB385 PG 390
 DB 404 PG 271
 FILE 10 SLIDE 934

SHOWN AS N.C. DIVISION OF PARKS AND RECREATION
 TRACT NO. 18 OF
 GORGES STATE PARK
 ON A SURVEY BY E. ROGER RAXTER, PLS RECORDED IN FILE 10, SLIDE 934
 TRANSYLVANIA REGISTER OF DEEDS

