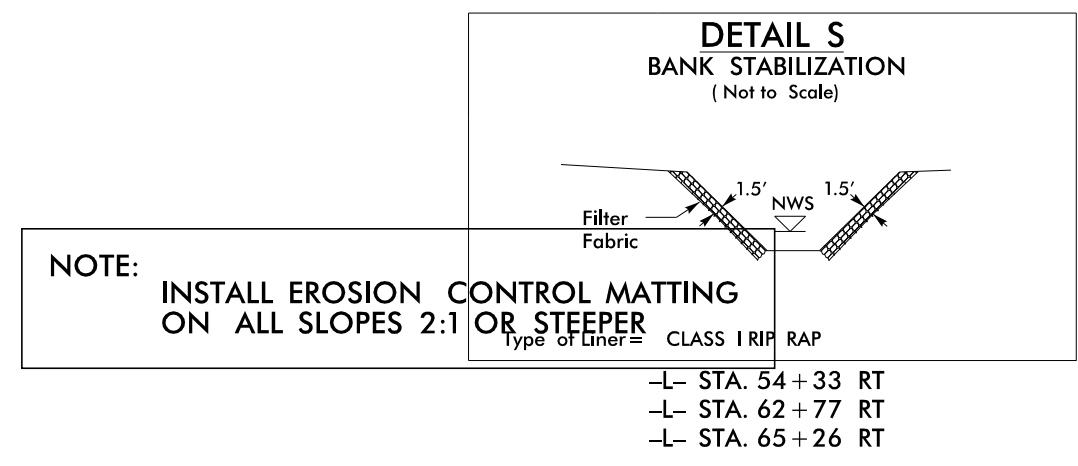


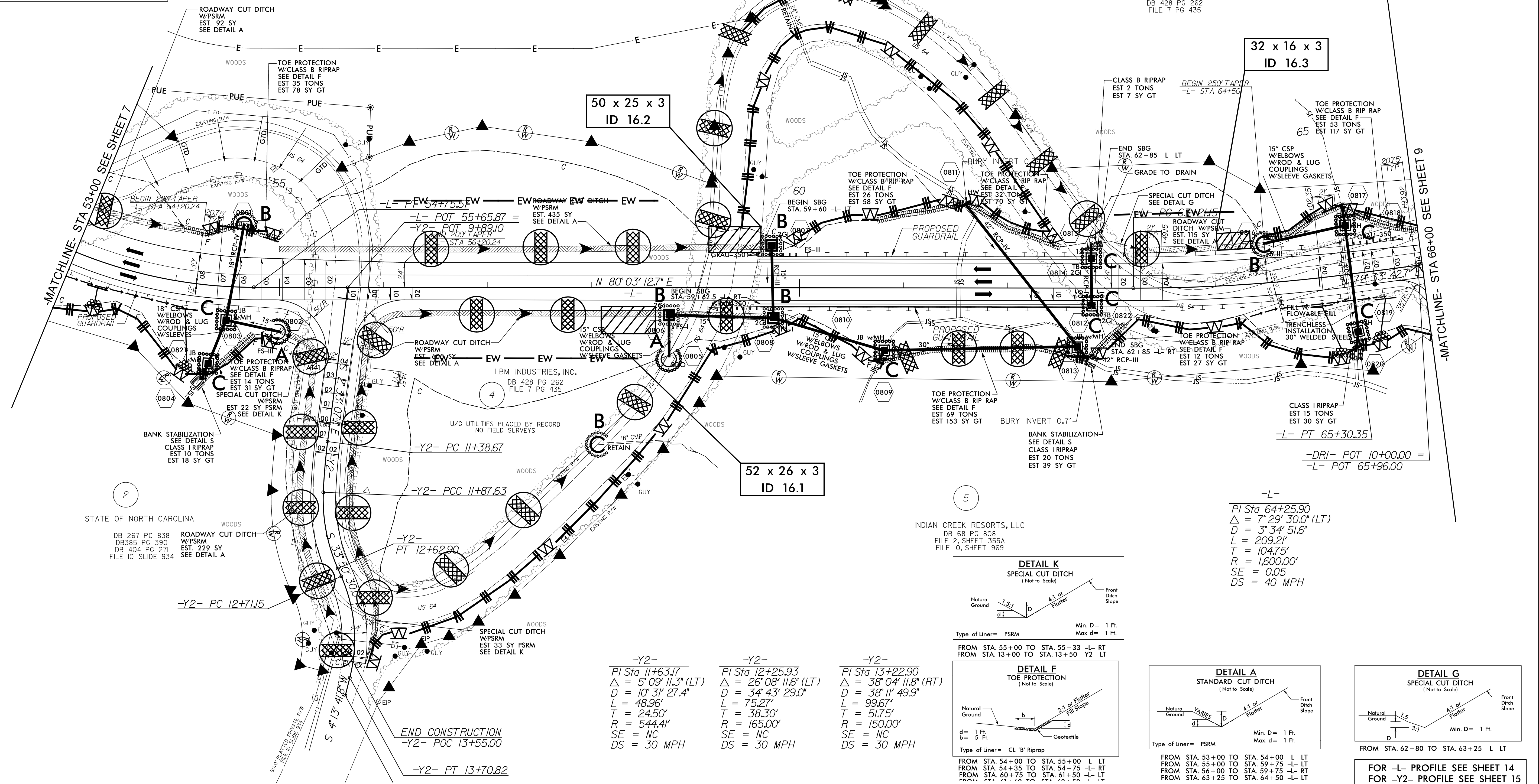
- NOTE: CONTRACTOR SHALL PROVIDE INLET PROTECTION FOR PARTIALLY INSTALLED STORM DRAIN. THIS MEASURE SHOULD BE INSTALLED AT THE END OF EACH WORKING DAY.
- NOTE: CONTRACTOR SHALL MAINTAIN ALL DEVICES AS PROJECT IS BROUGHT UP TO GRADE.
- NOTE: CONTRACTOR SHALL PROVIDE GROUND COVER ON EXPOSED SLOPES WITHIN 7 CALENDAR DAYS, AFTER ANY PHASE OF GRADING.
- NOTE: ALL EROSION CONTROL DEVICES SHOWN ARE LOCATED WITHIN EXISTING RW OR EASEMENT
- NOTE: INSTALL MATTING FOR EROSION CONTROL IN PROPOSED DITCH LINES EXCEPT WHERE PERMANENT LINERS ARE SPECIFIED ON THE PLANS OR DIRECTED OTHERWISE BY THE ENGINEER.



4
 LBM INDUSTRIES, INC.
 DB 428 PG 262
 FILE 7 PG 435

4
 LBM INDUSTRIES, INC.
 DB 428 PG 262
 FILE 7 PG 435

FINAL EROSION CONTROL FOR CONSTRUCTION SHEET 8



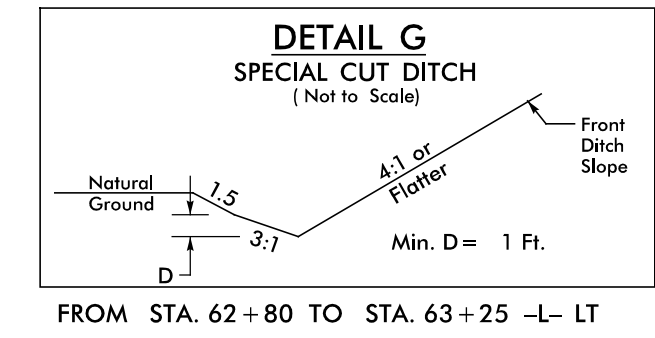
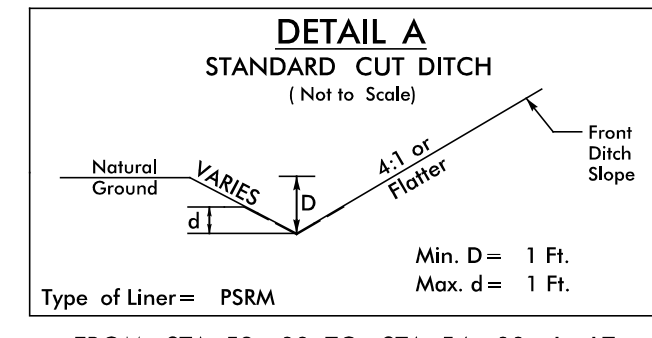
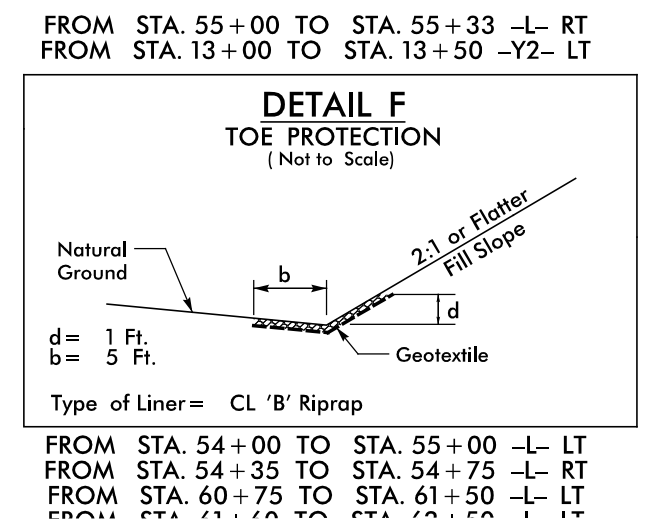
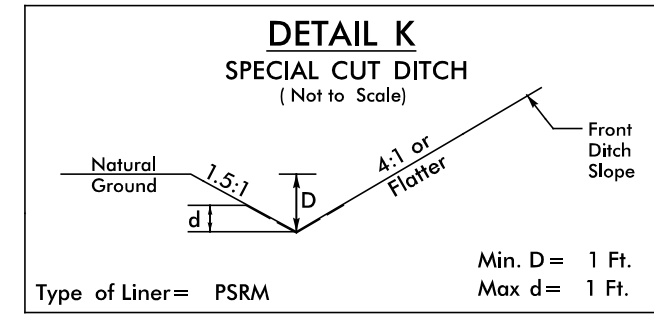
50 x 25 x 3
 ID 16.2

52 x 26 x 3
 ID 16.1

32 x 16 x 3
 ID 16.3

STATE OF NORTH CAROLINA
 DB 267 PG 838 ROADWAY CUT DITCH
 DB 385 PG 390 W/PSRM
 DB 404 PG 271 EST. 229 SY
 FILE 10 SLIDE 934 SEE DETAIL A

INDIAN CREEK RESORTS, LLC
 DB 68 PG 808
 FILE 2, SHEET 355A
 FILE 10, SHEET 969



- Y2-
 PI Sta 11+63.17
 $\Delta = 5' 09'' 11.3''$ (LT)
 $D = 10' 31'' 27.4''$
 $L = 48.96'$
 $T = 24.50'$
 $R = 544.41'$
 $SE = NC$
 $DS = 30$ MPH
- Y2-
 PI Sta 12+25.93
 $\Delta = 26' 08'' 11.6''$ (LT)
 $D = 34' 43'' 29.0''$
 $L = 75.27'$
 $T = 38.30'$
 $R = 165.00'$
 $SE = NC$
 $DS = 30$ MPH
- Y2-
 PI Sta 13+22.90
 $\Delta = 38' 04'' 11.8''$ (RT)
 $D = 38' 11'' 49.9''$
 $L = 99.67'$
 $T = 51.75'$
 $R = 150.00'$
 $SE = NC$
 $DS = 30$ MPH

-L-
 PI Sta 64+25.90
 $\Delta = 7' 29'' 30.0''$ (LT)
 $D = 3' 34'' 51.6''$
 $L = 209.21'$
 $T = 104.75'$
 $R = 1,600.00'$
 $SE = 0.05$
 $DS = 40$ MPH

FOR -L- PROFILE SEE SHEET 14
 FOR -Y2- PROFILE SEE SHEET 15

REVISIONS

8/17/99
 I:\V209\ICA\Projects\ER2409C\Control\cadd\NR2409C_hyd_f.mnl_psh18.dgn
 I:\V209\ICA\Projects\ER2409C\Control\cadd\NR2409C_hyd_f.mnl_psh18.dgn
 I:\V209\ICA\Projects\ER2409C\Control\cadd\NR2409C_hyd_f.mnl_psh18.dgn