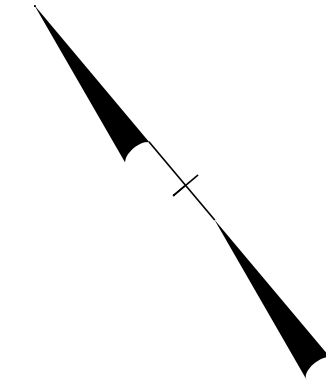


-L-
 PI Sta 42+47.38
 $\Delta = 16' 27'' 00.6''$ (LT)
 $D = 5' 43'' 46.5''$
 $L = 287.11'$
 $T = 144.55'$
 $R = 1,000.00'$
 $SE = 0.06$
 $DS = 40$ MPH



NOTE: INSTALL EROSION CONTROL MATTING ON ALL SLOPES 2:1 OR STEEPER

NOTE: CONTRACTOR SHALL PROVIDE INLET PROTECTION FOR PARTIALLY INSTALLED STORM DRAIN. THIS MEASURE SHOULD BE INSTALLED AT THE END OF EACH WORKING DAY.

NOTE: CONTRACTOR SHALL MAINTAIN ALL DEVICES AS PROJECT IS BROUGHT UP TO GRADE.

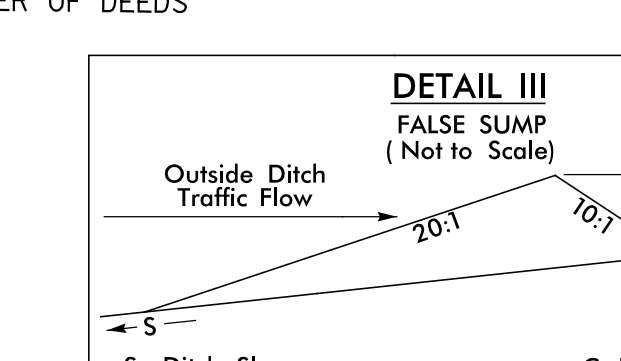
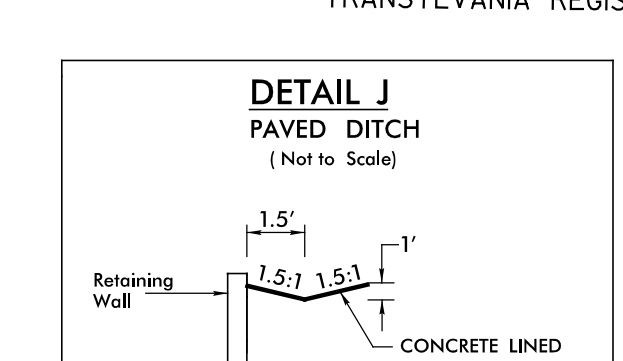
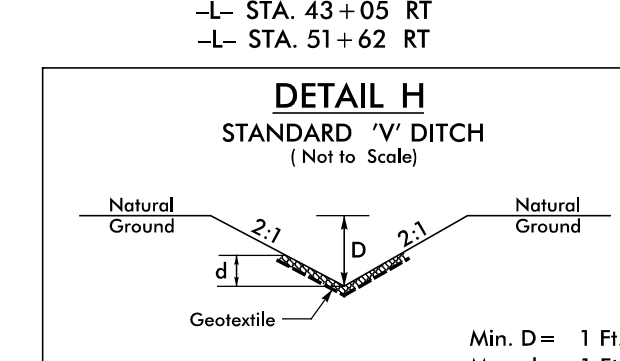
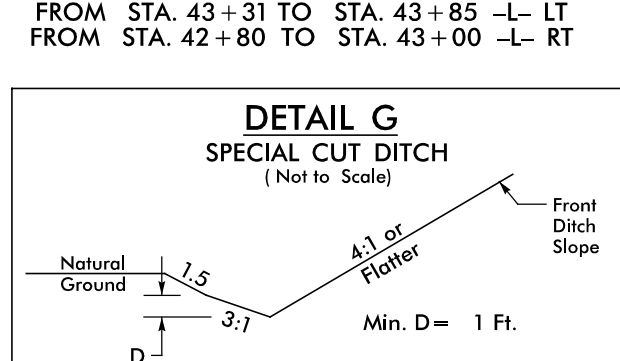
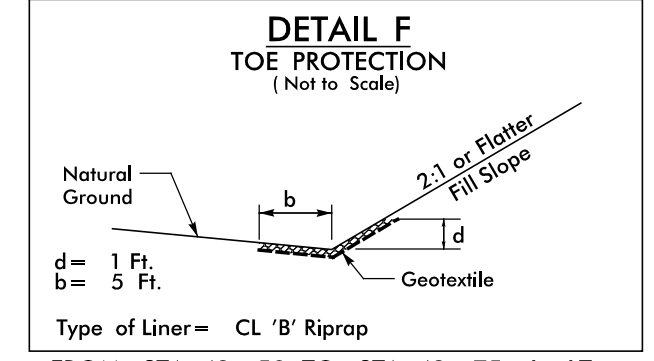
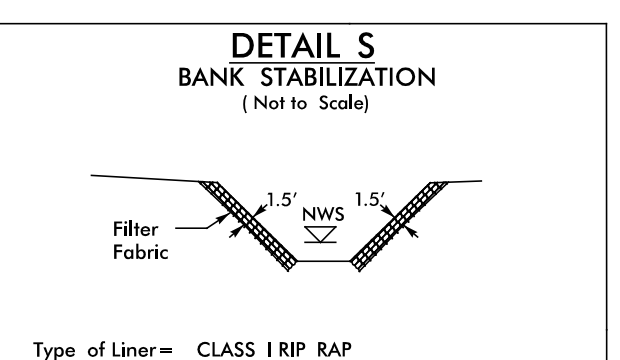
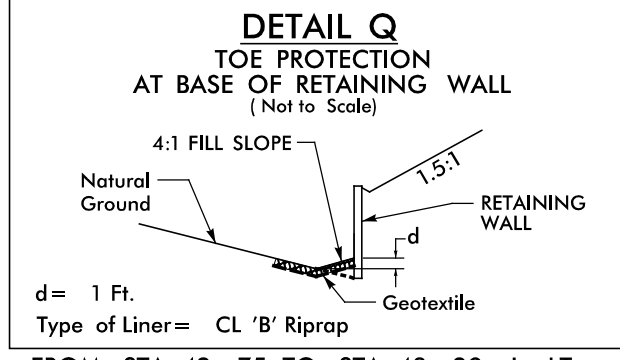
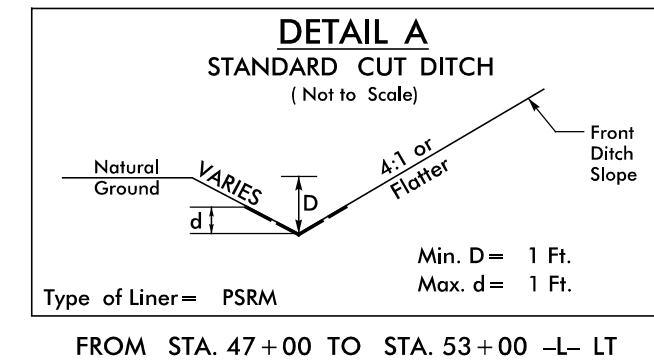
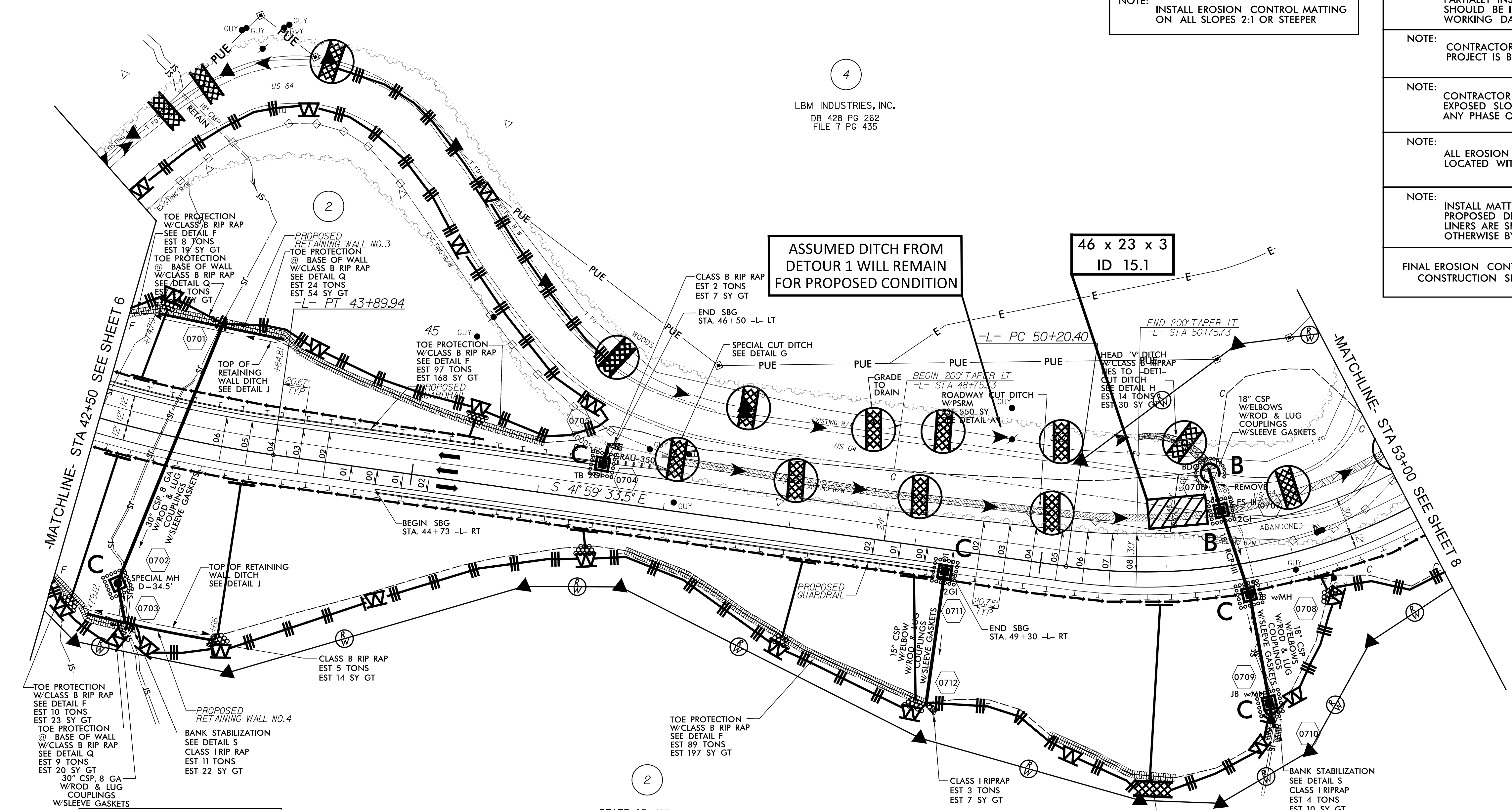
NOTE: CONTRACTOR SHALL PROVIDE GROUND COVER ON EXPOSED SLOPES WITHIN 7 CALENDAR DAYS, AFTER ANY PHASE OF GRADING.

NOTE: ALL EROSION CONTROL DEVICES SHOWN ARE LOCATED WITHIN EXISTING RW OR EASEMENT

NOTE: INSTALL MATTING FOR EROSION CONTROL IN PROPOSED DITCH LINES EXCEPT WHERE PERMANENT LINERS ARE SPECIFIED ON THE PLANS OR DIRECTED OTHERWISE BY THE ENGINEER.

FINAL EROSION CONTROL FOR CONSTRUCTION SHEET 7

REVISIONS
 8/17/99
 10/1/2009
 R:\Projects\2009\2409C\Control\cadd\NR2409C_hyd.f.mal.psh17.dgn
 K&K ASSOCIATES, P.C.
 K. K. K. ASSOCIATES, P.C.



STATE OF NORTH CAROLINA
 DB 267 PG 838
 DB385 PG 390
 DB 404 PG 271
 FILE 10 SLIDE 934

SHOWN AS N.C. DIVISION OF PARKS AND RECREATION
 TRACT NO. 18 OF
 GORGES STATE PARK
 ON A SURVEY BY E. ROGER RAXTER, PLS RECORDED IN FILE 10, SLIDE 934
 TRANSYLVANIA REGISTER OF DEEDS

-L-
 PI Sta 52+69.61
 $\Delta = 57' 57'' 13.8''$ (LT)
 $D = 12' 43'' 56.6''$
 $L = 455.17'$
 $T = 249.20'$
 $R = 450.00'$
 $SE = 0.08$
 $DS = 40$ MPH

FOR -L- PROFILE SEE SHEET 13