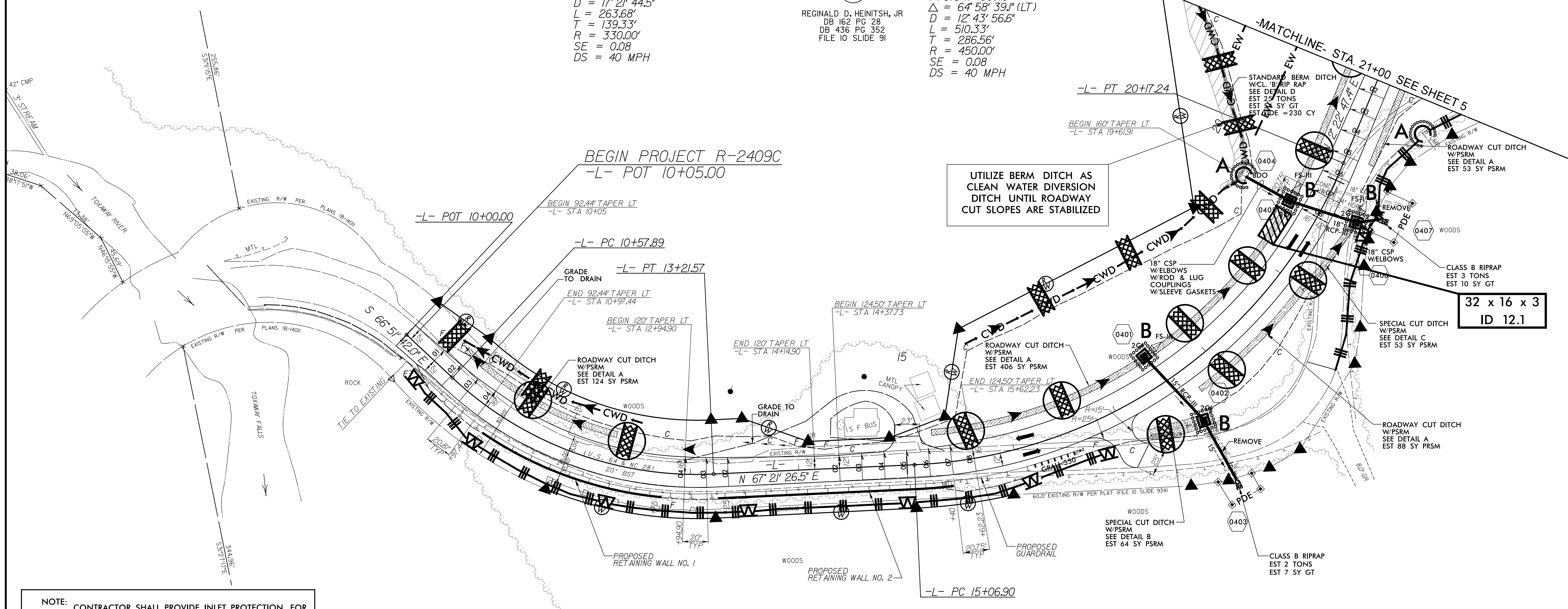


-L-
 PI Sta 11+97.22
 $\Delta = 45^\circ 46' 51.5''$ (LT)
 $D = 17' 21' 44.5''$
 $L = 263.68'$
 $T = 139.33'$
 $R = 330.00'$
 $SE = 0.08$
 $DS = 40$ MPH

REGINALD D. HEINITSH, JR.
 DB 162 PG 28
 DB 436 PG 352
 FILE 10 SLIDE 91

-L-
 PI Sta 17+93.46
 $\Delta = 64^\circ 58' 39.1''$ (LT)
 $D = 12' 43' 56.6''$
 $L = 510.33'$
 $T = 286.56'$
 $R = 450.00'$
 $SE = 0.08$
 $DS = 40$ MPH

REVISIONS



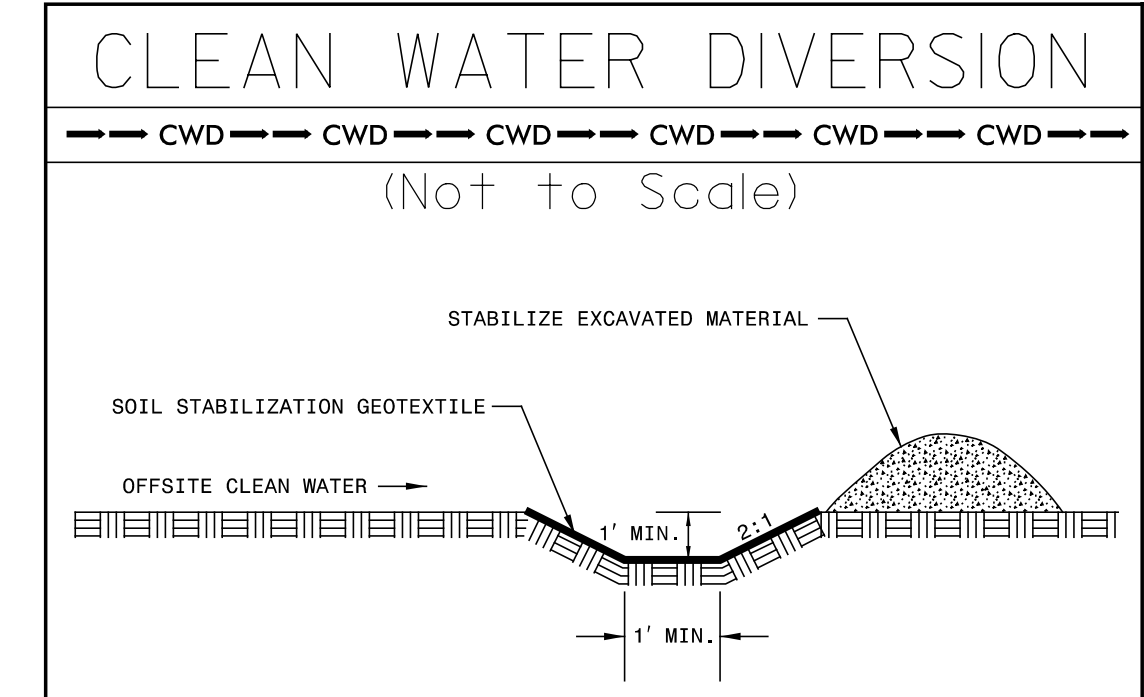
- NOTE: CONTRACTOR SHALL PROVIDE INLET PROTECTION FOR PARTIALLY INSTALLED STORM DRAIN. THIS MEASURE SHOULD BE INSTALLED AT THE END OF EACH WORKING DAY.
- NOTE: CONTRACTOR SHALL MAINTAIN ALL DEVICES AS PROJECT IS BROUGHT UP TO GRADE.
- NOTE: CONTRACTOR SHALL PROVIDE GROUND COVER ON EXPOSED SLOPES WITHIN 7 CALENDAR DAYS, AFTER ANY PHASE OF GRADING.
- NOTE: ALL EROSION CONTROL DEVICES SHOWN ARE LOCATED WITHIN EXISTING RW OR EASEMENT
- NOTE: INSTALL MATTING FOR EROSION CONTROL IN PROPOSED DITCH LINES EXCEPT WHERE PERMANENT LINERS ARE SPECIFIED ON THE PLANS OR DIRECTED OTHERWISE BY THE ENGINEER.

NOTE: INSTALL EROSION CONTROL MATTING ON ALL SLOPES 2:1 OR STEEPER

FINAL EROSION CONTROL FOR CONSTRUCTION SHEET 4

STATE OF NORTH CAROLINA
 DB 267 PG 838
 DB385 PG 390
 DB 404 PG 271
 FILE 10 SLIDE 934

SHOWN AS N.C. DIVISION OF PARKS AND RECREATION
 TRACT NO. 18 OF
 GORGES STATE PARK
 ON A SURVEY BY E. ROGER RAXTER, PLS RECORDED IN FILE 10, SLIDE 934
 TRANSYLVANIA REGISTER OF DEEDS



FOR -L- PROFILE SEE SHEET 10

I:\1\2014\EC-14\Const4\EROSION CONTROL\ecadd\NR2409C_hyd_f.mal_psh14.dgn
 I:\1\2014\EC-14\Const4\EROSION CONTROL\ecadd\NR2409C_hyd_f.mal_psh14.dgn
 I:\1\2014\EC-14\Const4\EROSION CONTROL\ecadd\NR2409C_hyd_f.mal_psh14.dgn