

# -DETOUR 2-

PROJECT REFERENCE NO.	SHEET NO.
R-2409C	EC-12/CONST2D
RW SHEET NO.	
ROADSIDE ENVIRONMENTAL PROJECT ENGINEER	

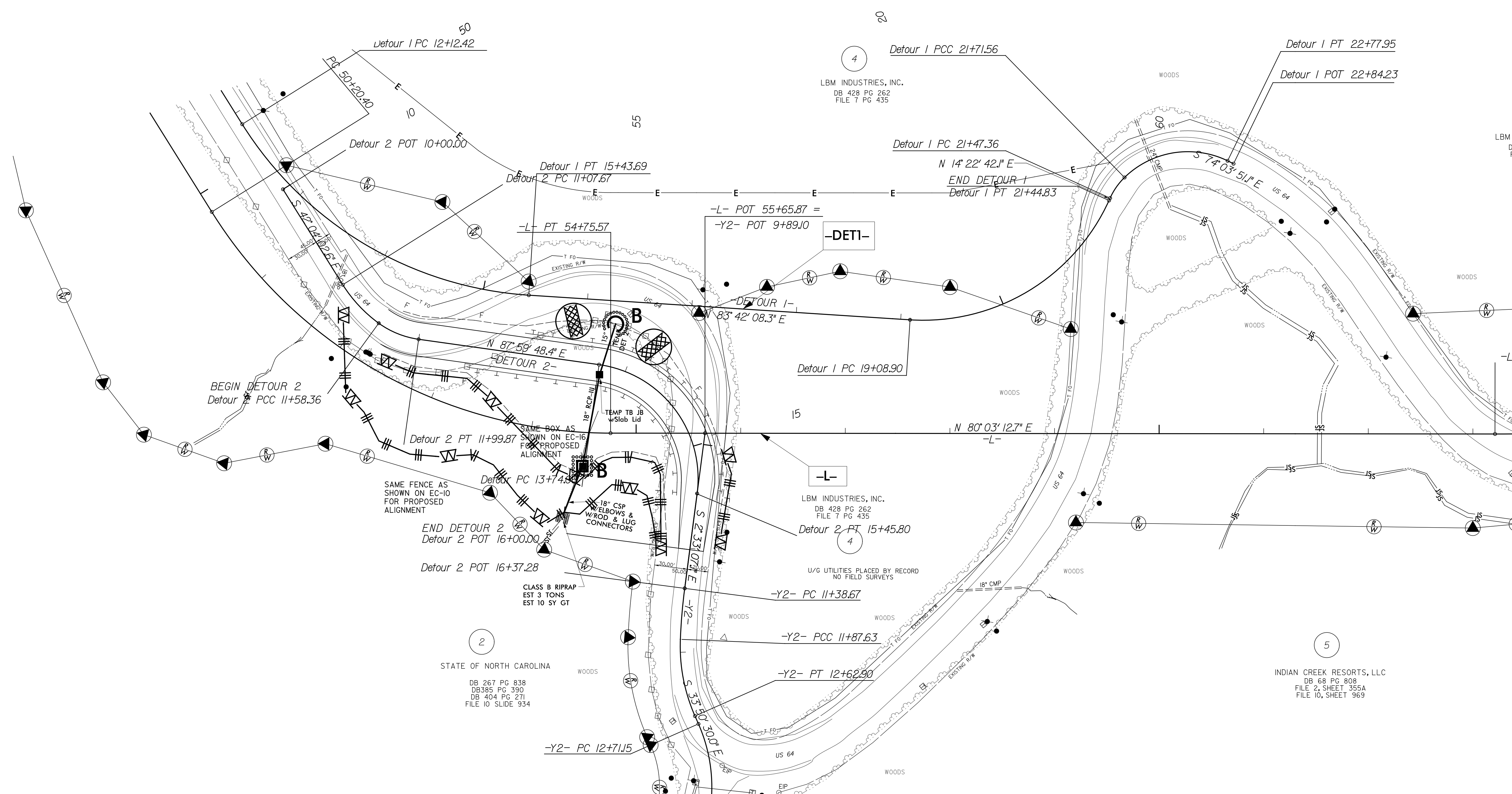
LEVEL III CERTIFIED BY:  
 STACEY H. BAILEY, PE  
 CERTIFICATION NUMBER: 3074  
 ISSUED: JUNE 25, 2014



- NOTE:**  
 PERIMETER EROSION CONTROL MEASURES SHALL BE INSTALLED DURING CLEARING AND GRUBBING PHASE.
- NOTE:**  
 PLACE TEMPORARY ROCK SEDIMENT DAMS TYPE - B AND TEMPORARY ROCK SILT CHECKS TYPE - A AT DRAINAGE OUTLETS.
- NOTE:**  
 CONTRACTOR SHALL PROVIDE GROUND COVER ON EXPOSED SLOPES WITHIN 7 CALENDAR DAYS, AFTER ANY PHASE OF GRADING
- NOTE:**  
 ALL EROSION CONTROL DEVICES SHOWN ARE LOCATED WITHIN EXISTING RW OR EASEMENT

CLEARING AND GRUBBING  
 EROSION CONTROL FOR  
 CONSTRUCTION SHEET 2D

REVISIONS



8/17/99  
 6/25/2014  
 I:\Hydro\Utilities\Environ\Control\cadd\1R2409C\_hyd\_final\_det2\_psh12.dgn  
 ICA ENGINEERING, INC.

FOR -DETOUR 2- PROFILE SEE SHEET 17