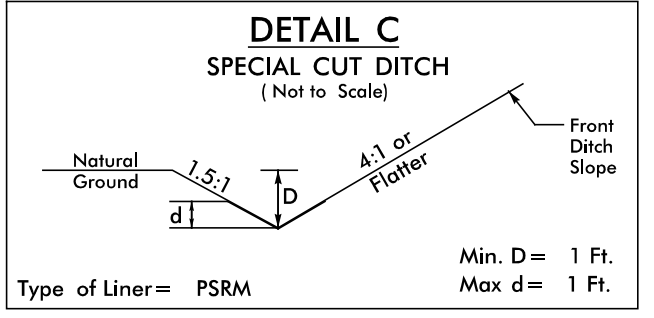
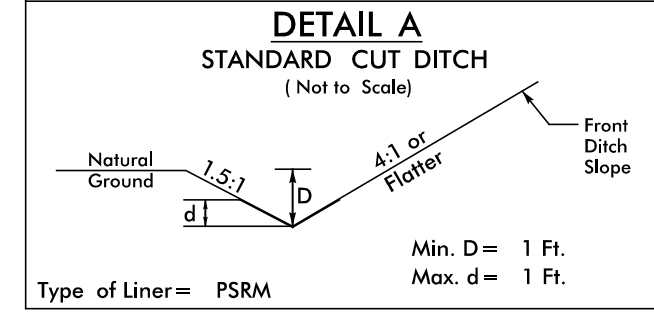


-DETOUR 1-

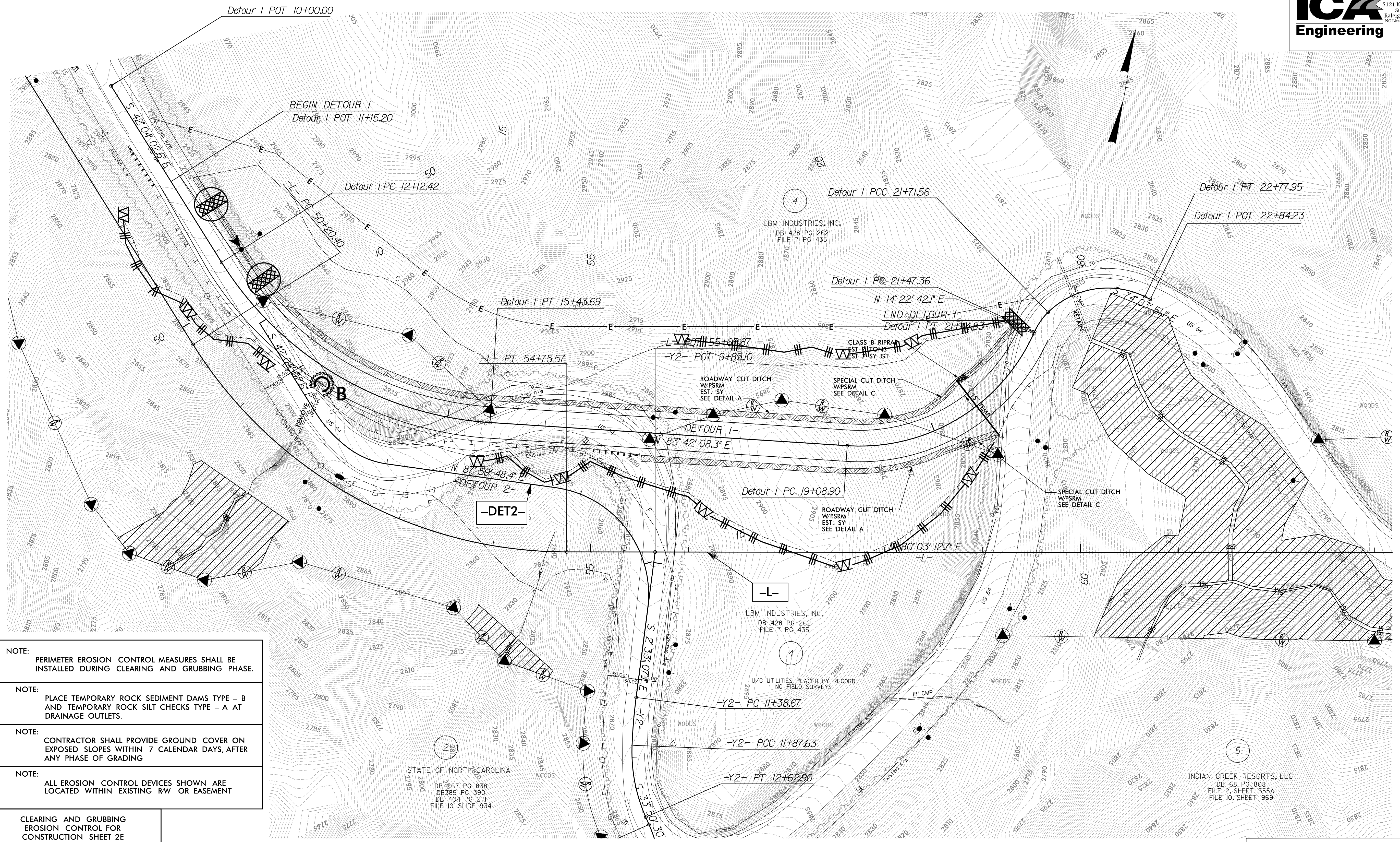


| | |
|---|---------------------------|
| PROJECT REFERENCE NO. R-2409C | SHEET NO. EC-5/CONST2E |
| RW SHEET NO. | |
| ROADSIDE ENVIRONMENTAL PROJECT ENGINEER | |
| LEVEL III CERTIFIED BY: STACEY H. BAILEY, PE | |
| CERTIFICATION NUMBER: 3074 | |
| ISSUED: JUNE 25, 2014 | |



FROM STA. 11+25 TO STA. 20+00 -DETI- LT
FROM STA. 17+00 TO STA. 20+00 -DETI- RT

FROM STA. 20+00 TO STA. 21+50 -DETI- LT
FROM STA. 20+00 TO STA. 20+50 -DETI- RT



- NOTE: PERIMETER EROSION CONTROL MEASURES SHALL BE INSTALLED DURING CLEARING AND GRUBBING PHASE.
- NOTE: PLACE TEMPORARY ROCK SEDIMENT DAMS TYPE - B AND TEMPORARY ROCK SILT CHECKS TYPE - A AT DRAINAGE OUTLETS.
- NOTE: CONTRACTOR SHALL PROVIDE GROUND COVER ON EXPOSED SLOPES WITHIN 7 CALENDAR DAYS, AFTER ANY PHASE OF GRADING
- NOTE: ALL EROSION CONTROL DEVICES SHOWN ARE LOCATED WITHIN EXISTING RW OR EASEMENT

CLEARING AND GRUBBING EROSION CONTROL FOR CONSTRUCTION SHEET 2E

FOR -DETOUR 1- PROFILE SEE SHEET 16

REVISIONS

8/17/99
 6/25/2014
 ICA Engineering, Inc. Control\cadd\1R2409C_hyd_c&g_det1_psh05.dgn