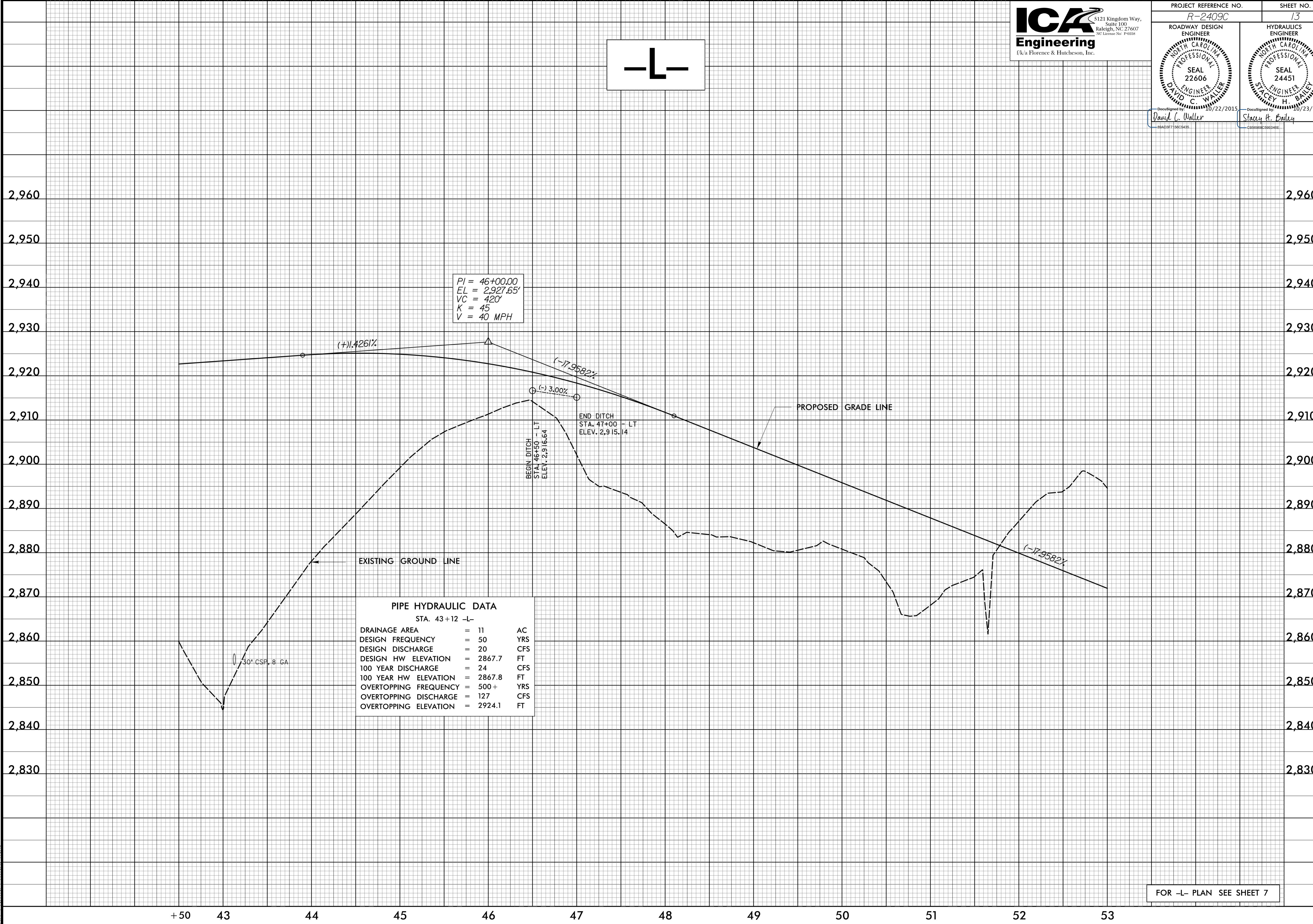


5/14/15



PROJECT REFERENCE NO. <i>R-2409C</i>	SHEET NO. <i>13</i>
ROADWAY DESIGN ENGINEER DAVID C. WALLER PROFESSIONAL SEAL 22606 10/22/2015	HYDRAULICS ENGINEER STACEY H. BAILEY PROFESSIONAL SEAL 24451 10/23/2015

-L-



$PI = 46+00.00$
 $EL = 2,927.65'$
 $VC = 420'$
 $K = 45$
 $V = 40 \text{ MPH}$

BEGIN DITCH
 STA. 46+50 - LT
 ELEV. 2,916.64

END DITCH
 STA. 47+00 - LT
 ELEV. 2,915.14

EXISTING GROUND LINE

PROPOSED GRADE LINE

PIPE HYDRAULIC DATA
STA. 43+12 -L-

DRAINAGE AREA	= 11	AC
DESIGN FREQUENCY	= 50	YRS
DESIGN DISCHARGE	= 20	CFS
DESIGN HW ELEVATION	= 2867.7	FT
100 YEAR DISCHARGE	= 24	CFS
100 YEAR HW ELEVATION	= 2867.8	FT
OVERTOPPING FREQUENCY	= 500+	YRS
OVERTOPPING DISCHARGE	= 127	CFS
OVERTOPPING ELEVATION	= 2924.1	FT

30" CSP, 8 GA.

FOR -L- PLAN SEE SHEET 7

D:\2015\Projects\2409C\rdy\pl13.dgn