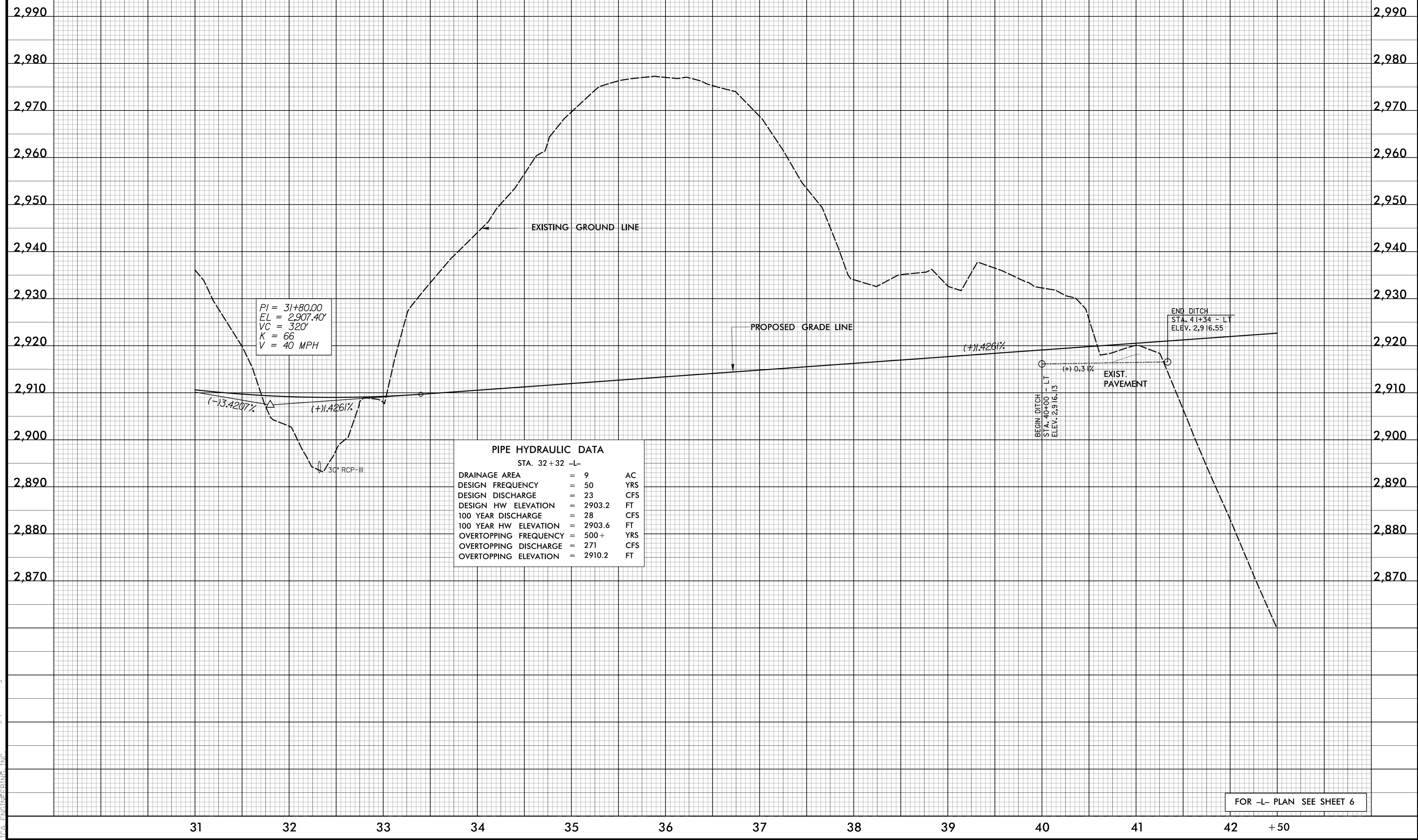


5/14/19



PROJECT REFERENCE NO. <i>R-2409C</i>	SHEET NO. <i>12</i>
ROADWAY DESIGN ENGINEER DAVID C. WALLER PROFESSIONAL SEAL 22606 NORTH CAROLINA ENGINEERS DocuSigned by: David C. Waller 05/14/2015 10:22:00 AM	HYDRAULICS ENGINEER STACEY H. BAILEY PROFESSIONAL SEAL 24451 NORTH CAROLINA ENGINEERS DocuSigned by: Stacey H. Bailey 05/14/2015 10:23:00 AM

-L-



$P_i = 31+80.00$
 $EL = 2,907.40'$
 $VC = 320'$
 $K = 66$
 $V = 40 \text{ MPH}$

PIPE HYDRAULIC DATA		
STA. 32+32 -L-		
DRAINAGE AREA	= 9	AC
DESIGN FREQUENCY	= 50	YRS
DESIGN DISCHARGE	= 23	CFS
DESIGN HW ELEVATION	= 2903.2	FT
100 YEAR DISCHARGE	= 28	CFS
100 YEAR HW ELEVATION	= 2903.6	FT
OVERTOPPING FREQUENCY	= 500+	YRS
OVERTOPPING DISCHARGE	= 271	CFS
OVERTOPPING ELEVATION	= 2910.2	FT

I:\2015\Projects\2409C\rdy\p1_12.dgn

FOR -L- PLAN SEE SHEET 6