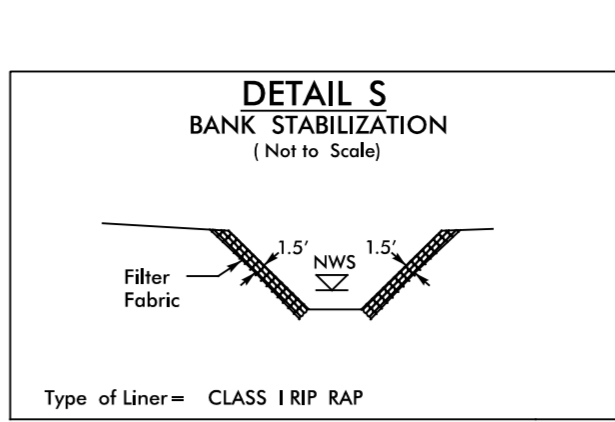
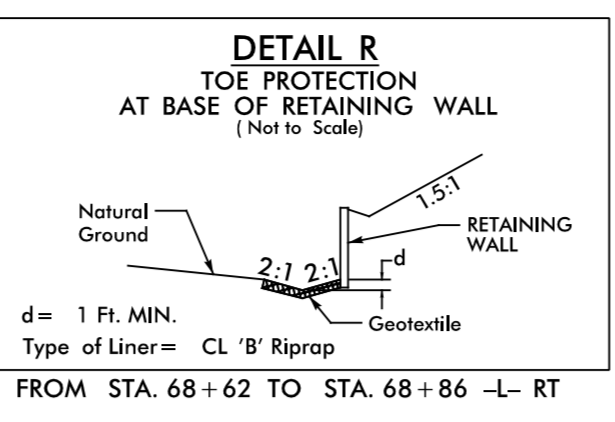
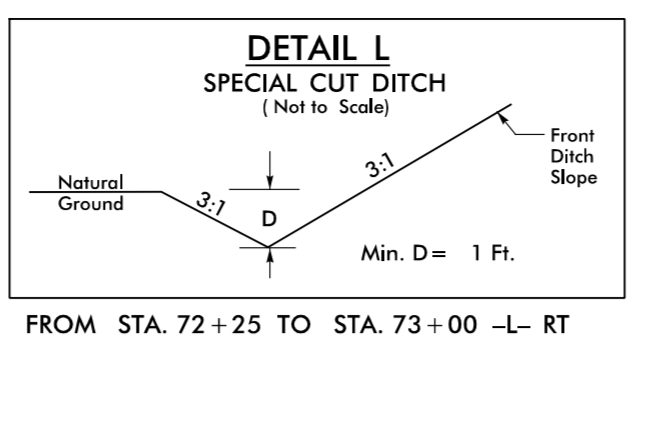
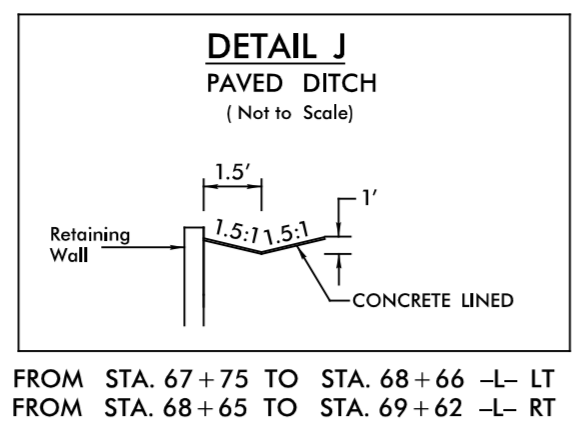
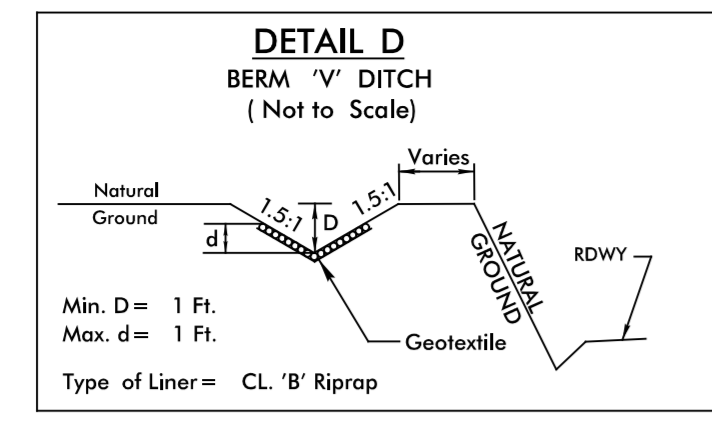
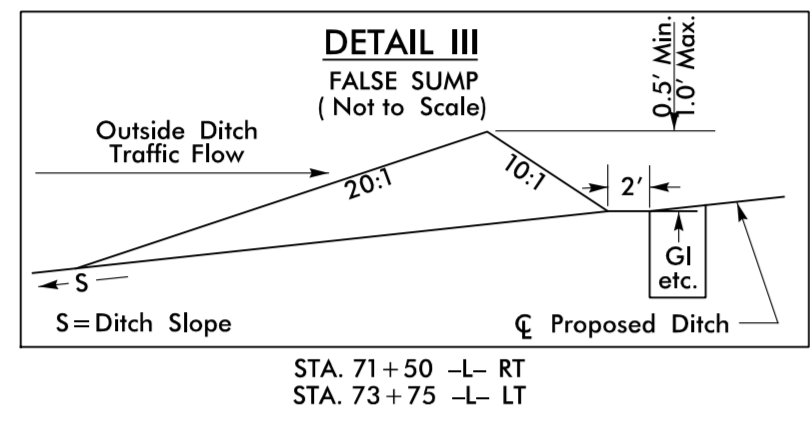
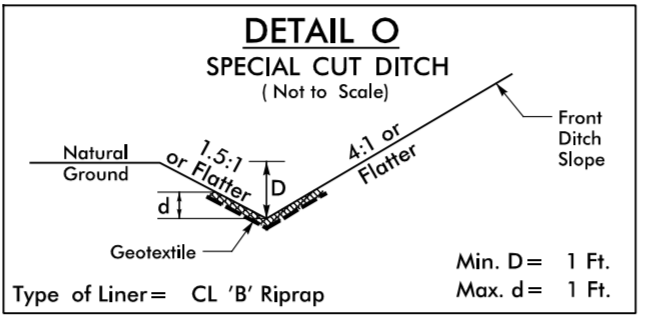
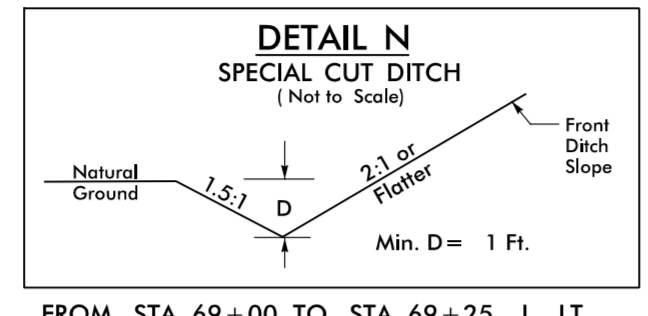
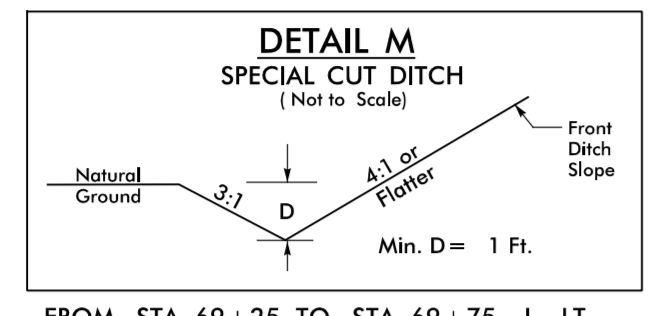


8/17/19



| | |
|--|---|
| PROJECT REFERENCE NO. R-2409C | SHEET NO. 9 |
| RW SHEET NO. | |
| ROADWAY DESIGN ENGINEER DAVID C. WALLER SEAL 22606 10/22/2015 | HYDRAULICS ENGINEER STACEY H. BAILEY SEAL 24451 10/23/2015 |

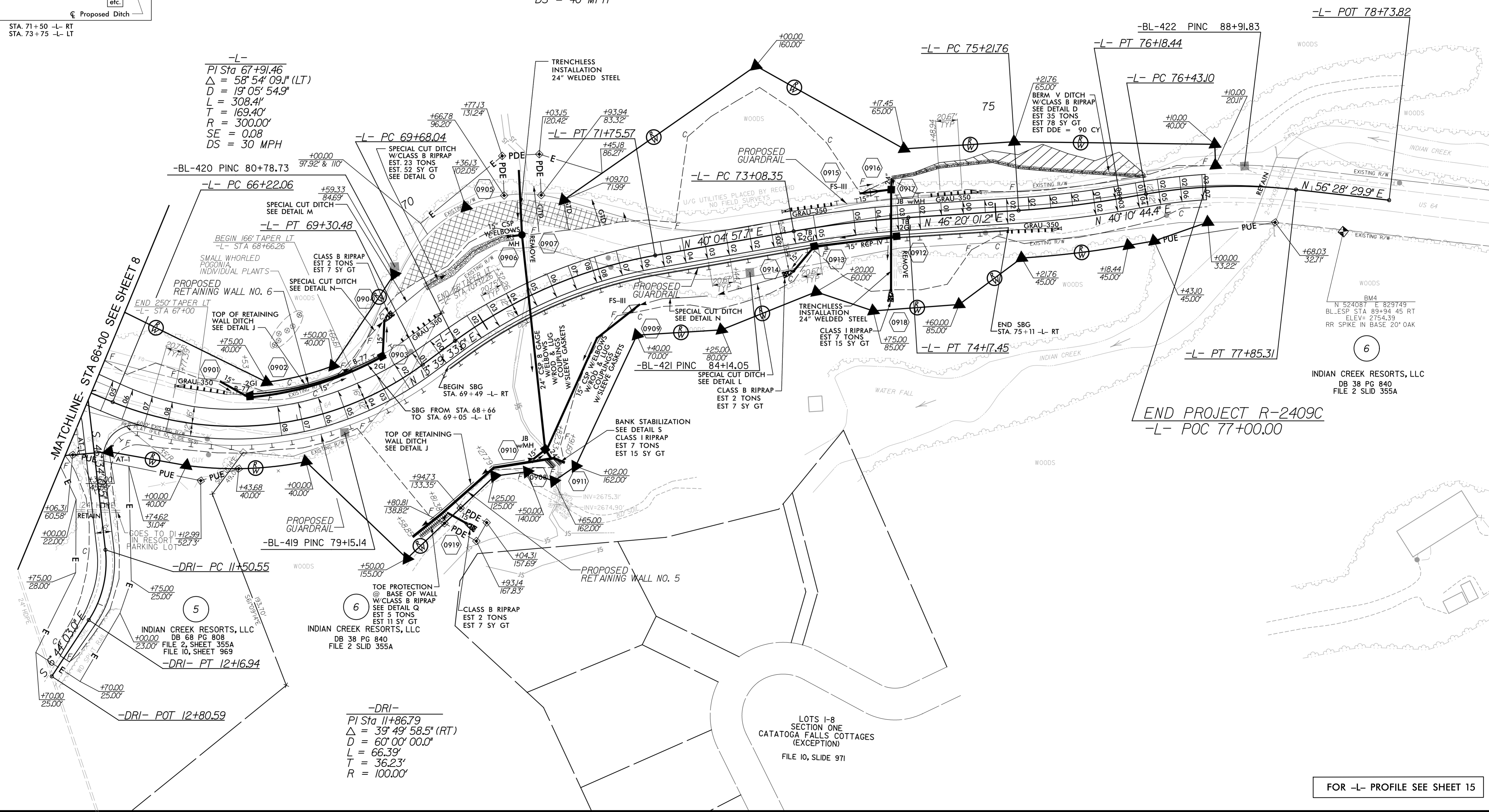


4
LBM INDUSTRIES, INC.
DB 428 PG 262
FILE 7 PG 435

-L-
PI Sta 73+62.95
Δ = 6' 15' 03.5" (RT)
D = 5' 43' 46.5"
L = 109.10'
T = 54.60'
R = 1,000.00'
SE = 0.06
DS = 40 MPH

-L-
PI Sta 75+70.15
Δ = 6' 09' 16.9" (LT)
D = 6' 21' 58.3"
L = 96.68'
T = 48.39'
R = 900.00'
SE = 0.06
DS = 40 MPH

-L-
PI Sta 77+4.69
Δ = 16' 17' 45.5" (RT)
D = 11' 27' 33.0"
L = 142.21'
T = 71.59'
R = 500.00'
SE = 0.08
DS = 40 MPH



10/21/2015 10:24:09 AM P:\R2409C_Rd4-ps-h_09.dgn
C:\ENGINEERING\ICA