

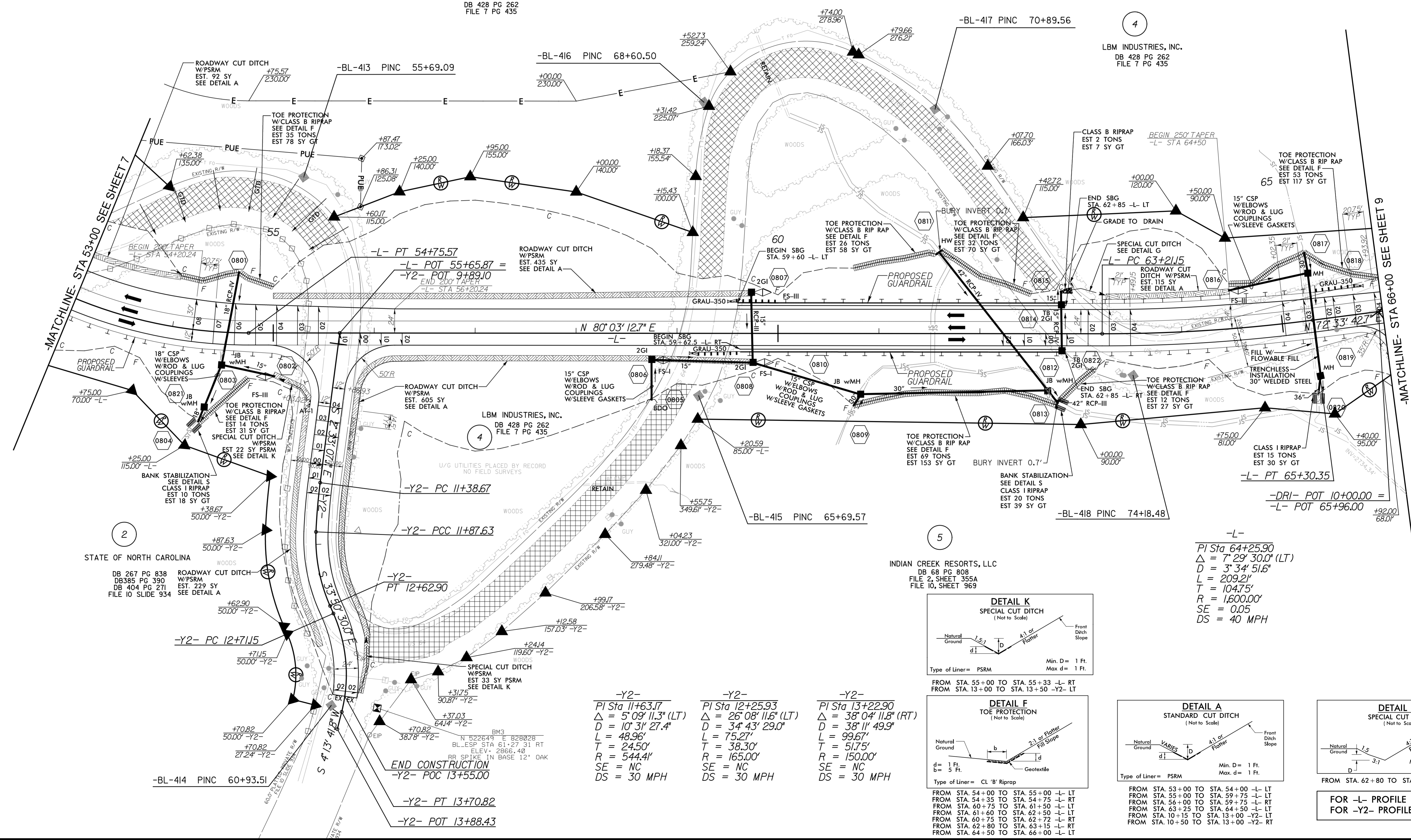
-L-  
PI Sta 52+69.61  
 $\Delta = 57^{\circ} 57' 13.8''$  (LT)  
D = 12' 43" 56.6"  
L = 455.17'  
T = 249.20'  
R = 450.00'  
SE = 0.08  
DS = 40 MPH

4

LBM INDUSTRIES, INC.  
DB 428 PG 262  
FILE 7 PG 435

4

LBM INDUSTRIES, INC.  
DB 428 PG 262  
FILE 7 PG 435



-MATCHLINE- STA 53+00 SEE SHEET 7

-MATCHLINE- STA 66+00 SEE SHEET 9

2

STATE OF NORTH CAROLINA  
DB 267 PG 838  
DB 385 PG 390  
DB 404 PG 271  
FILE 10 SLIDE 934

5

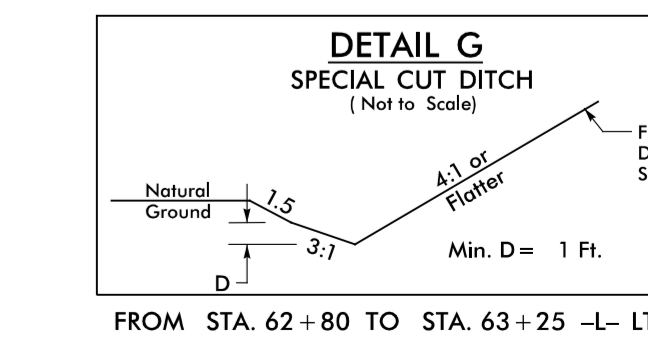
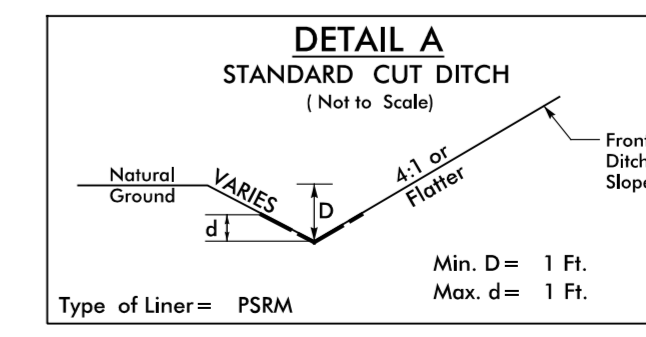
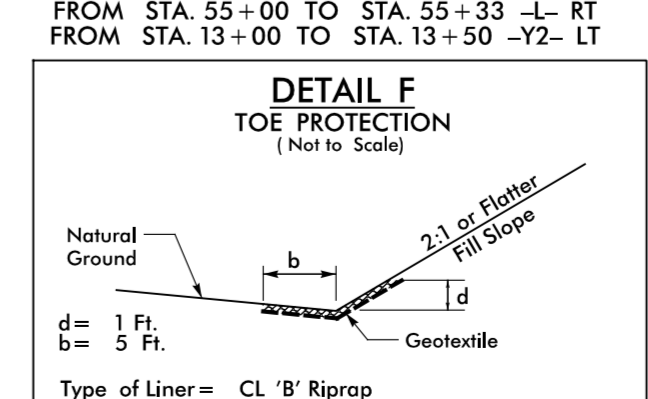
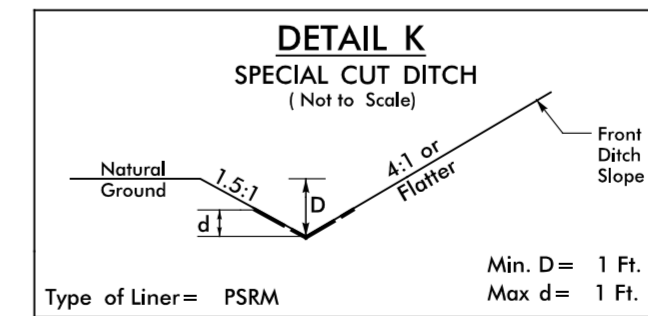
INDIAN CREEK RESORTS, LLC  
DB 68 PG 808  
FILE 2, SHEET 355A  
FILE 10, SHEET 969

-L-  
PI Sta 64+25.90  
 $\Delta = 7^{\circ} 29' 30.0''$  (LT)  
D = 3' 34" 51.6"  
L = 209.21'  
T = 104.75'  
R = 1,600.00'  
SE = 0.05  
DS = 40 MPH

-Y2-  
PI Sta 11+63.17  
 $\Delta = 5^{\circ} 09' 11.3''$  (LT)  
D = 10' 31" 27.4"  
L = 48.96'  
T = 24.50'  
R = 544.41'  
SE = NC  
DS = 30 MPH

-Y2-  
PI Sta 12+25.93  
 $\Delta = 26^{\circ} 08' 11.6''$  (LT)  
D = 34' 43" 29.0"  
L = 75.27'  
T = 38.30'  
R = 165.00'  
SE = NC  
DS = 30 MPH

-Y2-  
PI Sta 13+22.90  
 $\Delta = 38^{\circ} 04' 11.8''$  (RT)  
D = 38' 11" 49.9"  
L = 99.67'  
T = 51.75'  
R = 150.00'  
SE = NC  
DS = 30 MPH



FOR -L- PROFILE SEE SHEET 14  
FOR -Y2- PROFILE SEE SHEET 15