

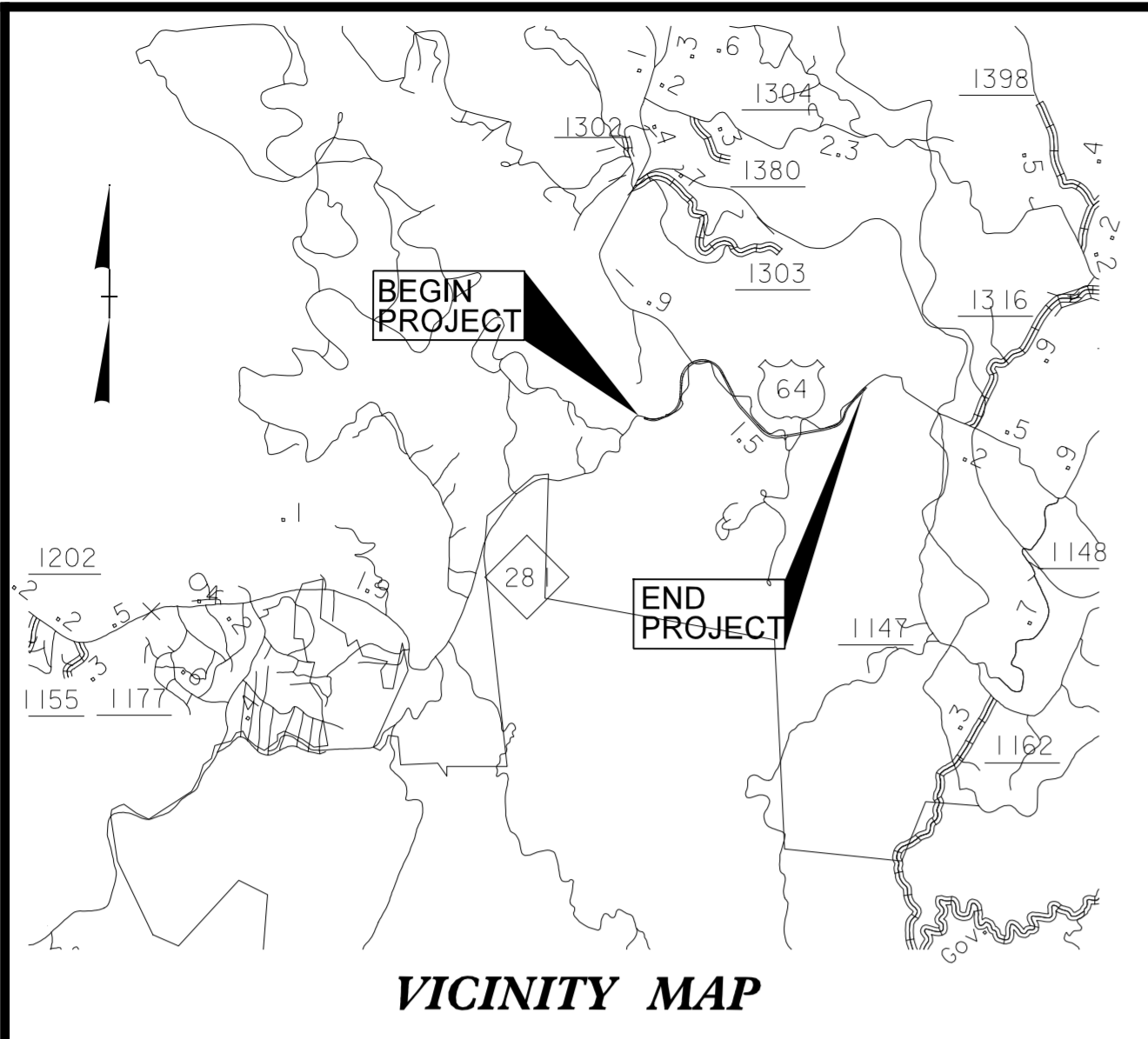
PROJECT REFERENCE NO.	SHEET NO.
R-2409C	1C-1
Location and Surveys	

SURVEY CONTROL SHEET

NOTES:

1. THE CONTROL DATA FOR THIS PROJECT CAN BE FOUND ELECTRONICALLY BY SELECTING PROJECT CONTROL DATA AT:
[HTTP://WWW.NCDOT.ORG/DOH/PRECONSTRUCT/HIGHWAY/LOCATION/PROJECT/](http://www.ncdot.org/DOH/PRECONSTRUCT/HIGHWAY/LOCATION/PROJECT/)

THE FILES TO BE FOUND ARE AS FOLLOWS:
R2409C_LS_CONTROL.TXT
R2409C_LS_LOCAL.TXT
 2. SITE CALIBRATION INFORMATION HAS NOT BEEN PROVIDED FOR THIS PROJECT. IF FURTHER INFORMATION IS NEEDED, PLEASE CONTACT THE LOCATION & SURVEYS UNIT.
 3. PROJECT CONTROL ESTABLISHED USING GLOBAL POSITIONING SYSTEM. NETWORK ESTABLISHED FROM EXISTING (NON-HARN) MONUMENTATION. SEE SURVEY CONTROL SHEET 1E FOR HORIZONTAL AND VERTICAL COORDINATE VALUES.
- ▲ INDICATES GEODETIC CONTROL MONUMENTS USED OR SET FOR HORIZONTAL AND/OR VERTICAL PROJECT CONTROL BY THE NCDOT LOCATION & SURVEYS UNIT.
 - ◆ INDICATES BASELINE TRAVERSE MONUMENTS USED OR SET FOR HORIZONTAL PROJECT CONTROL BY THE NCDOT LOCATION & SURVEYS UNIT.
 - ▼ INDICATES BENCHMARKS USED OR SET FOR VERTICAL PROJECT CONTROL BY THE NCDOT LOCATION & SURVEYS UNIT.

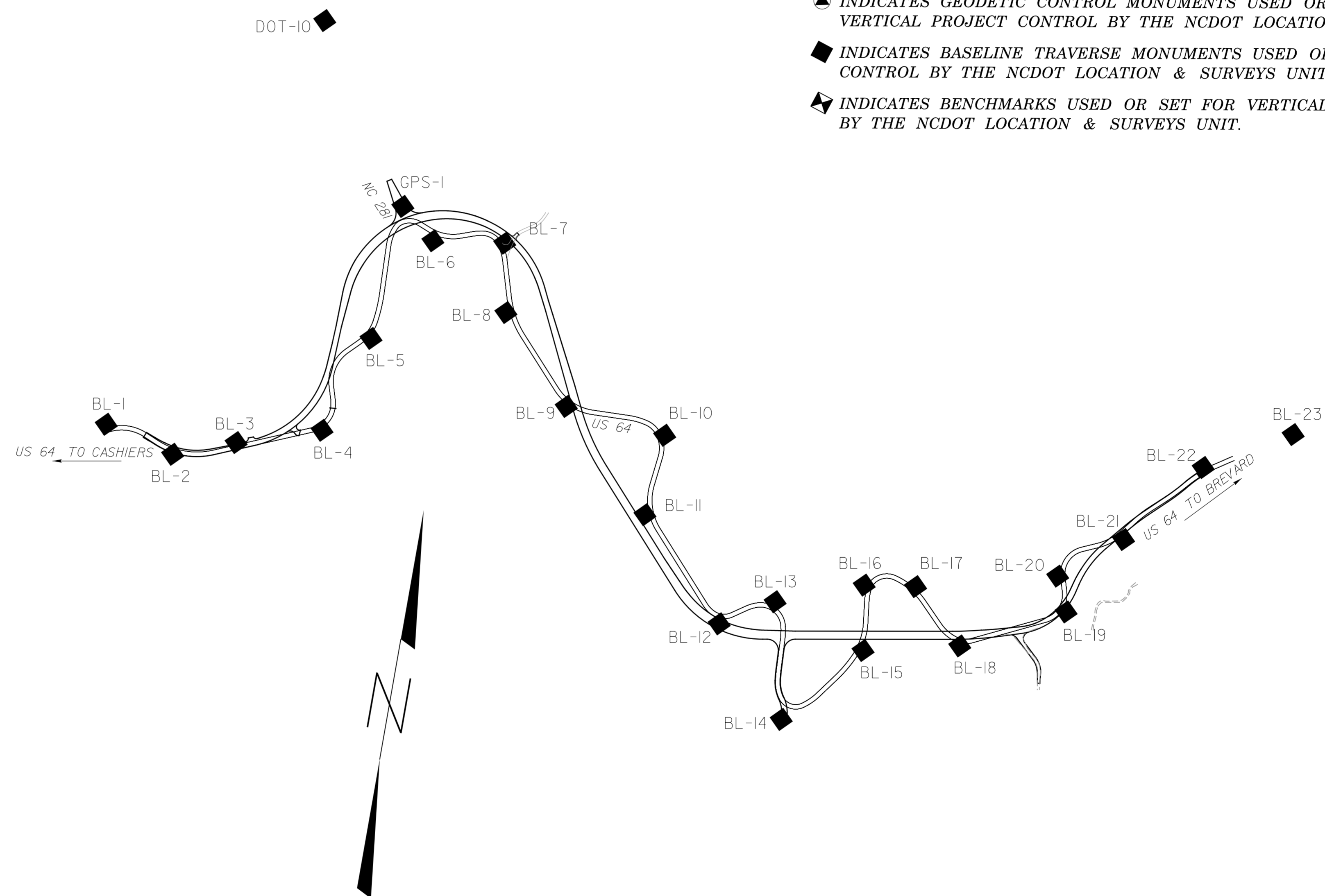


DATUM DESCRIPTION

PROJECT COORDINATES FOR THIS PROJECT ARE CONSISTENT WITH THE COORDINATES FROM THE DIVISION 14 DDC PROJECT DONE IN 1997 OR 1998. NO DATUM DESCRIPTION RECORD WAS FOUND IN THE OLD NCDOT RECORDS. GPS POINTS R2409-1, R2409-2, AND R2409-3 WERE USED FOR CONTROL. R2409-4 WAS FOUND AND TIED BUT HAD BEEN DISTURBED AND WAS NOT USED.

A GPS SITE CALIBRATION WOULD BE NEEDED BEFORE ANY CONSTRUCTION SURVEYS ARE COMPLETED WITH GPS EQUIPMENT.

ALL LINEAR DIMENSIONS ARE LOCALIZED HORIZONTAL DISTANCES



NOTE: DRAWING NOT TO SCALE