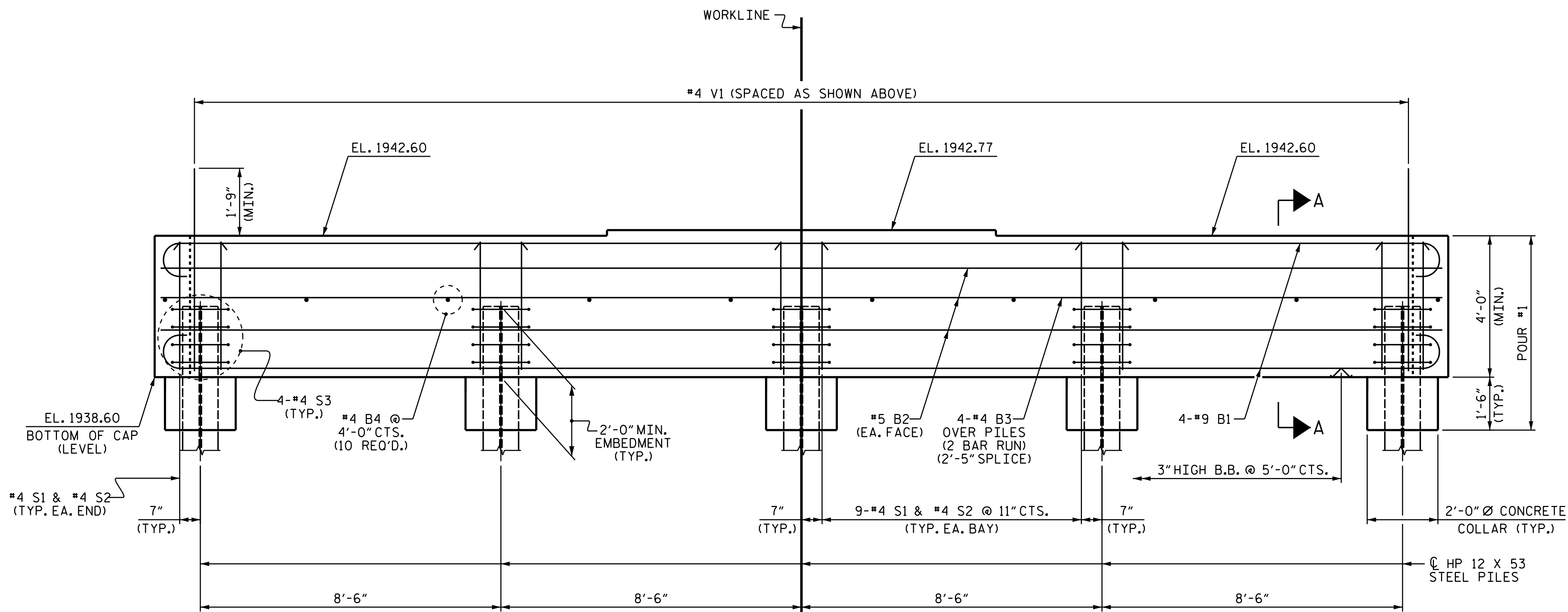


PLAN



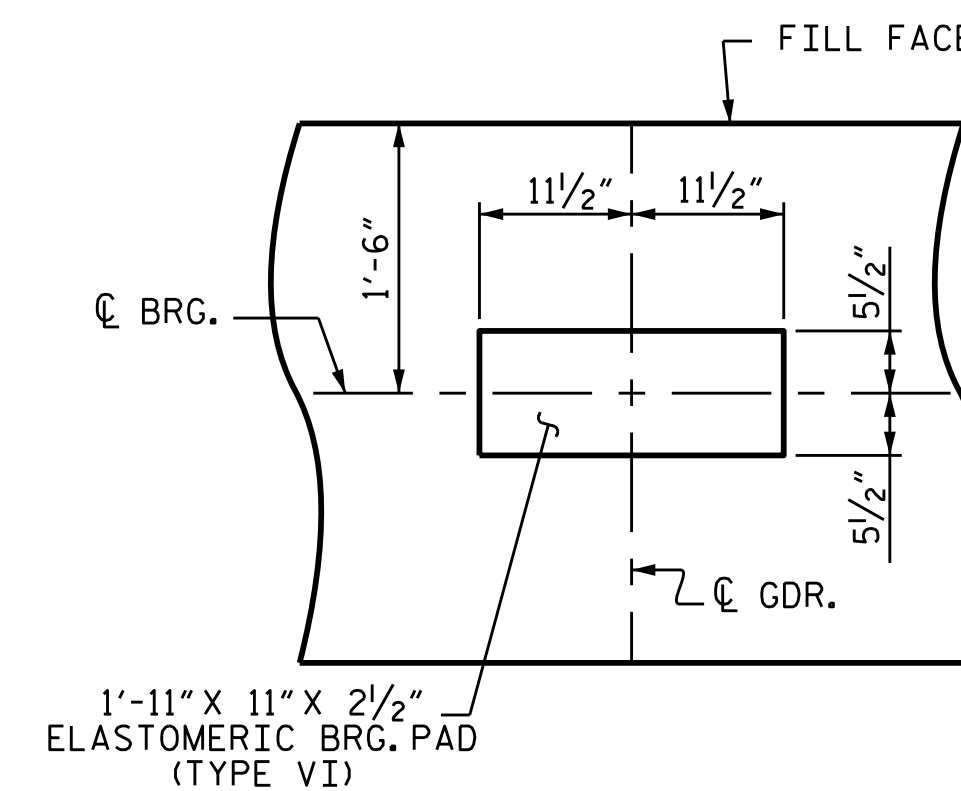
ELEVATION

NOTES

SEE SUPERSTRUCTURE SHEETS FOR UPPER PART OF INTEGRAL END BENT DETAILS.

THE CONTRACTOR SHALL PROVIDE FOR INSTALLATION OF THE 4" DIAMETER DRAIN PIPE THROUGH THE WING WALL AS REQUIRED FOR REINFORCED BRIDGE APPROACH FILLS. SEE THE ROADWAY PLANS. REINFORCING STEEL IN THE WING WALL MAY BE SHIFTED AS NECESSARY TO CLEAR THE DRAIN PIPE.

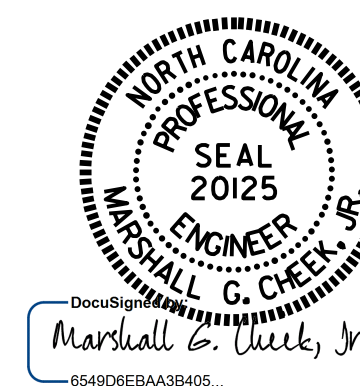
THE CONTRACTOR'S ATTENTION IS CALLED TO THE FACT THAT THE UPPER PART OF THE END BENT WINGS ARE TO BE POURED WITH POUR #4 OF THE SUPERSTRUCTURE.



DETAIL A
(TYP. EA. BEARING)

PROJECT NO. B-3868
MACON COUNTY
 STATION: 18+33.50 -L-
 SHEET 1 OF 2

STATE OF NORTH CAROLINA
 DEPARTMENT OF TRANSPORTATION
 RALEIGH
 SUBSTRUCTURE
 INTEGRAL
 END BENT No. 2



DRAWN BY : B.N. GRADY DATE : 2/15
 CHECKED BY : H.T. BARBOUR DATE : 2/15
 DESIGN ENGINEER OF RECORD: S.T. CHAMPION DATE : 8/15

11-SEP-2015 09:48
 L:\Structures\Plans\Final Plans\B3868.SD.E*_01.dgn
 bngrady

REVISIONS						SHEET NO.
NO.	BY:	DATE:	NO.	BY:	DATE:	S-34
1			3			TOTAL SHEETS
2			4			40