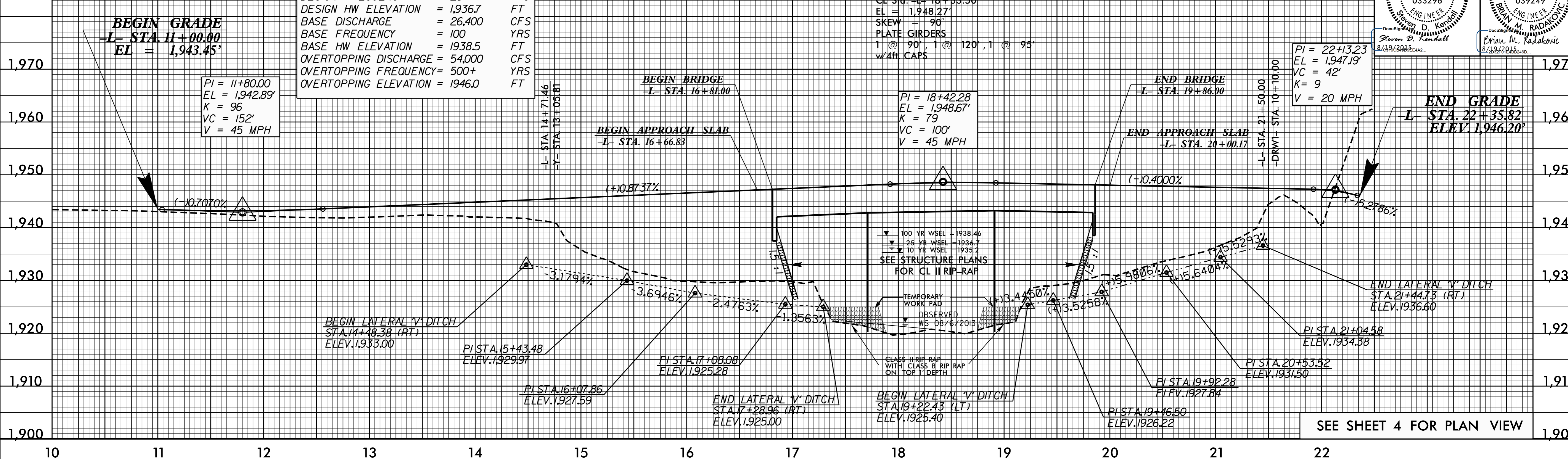


-L- (SR 1456)

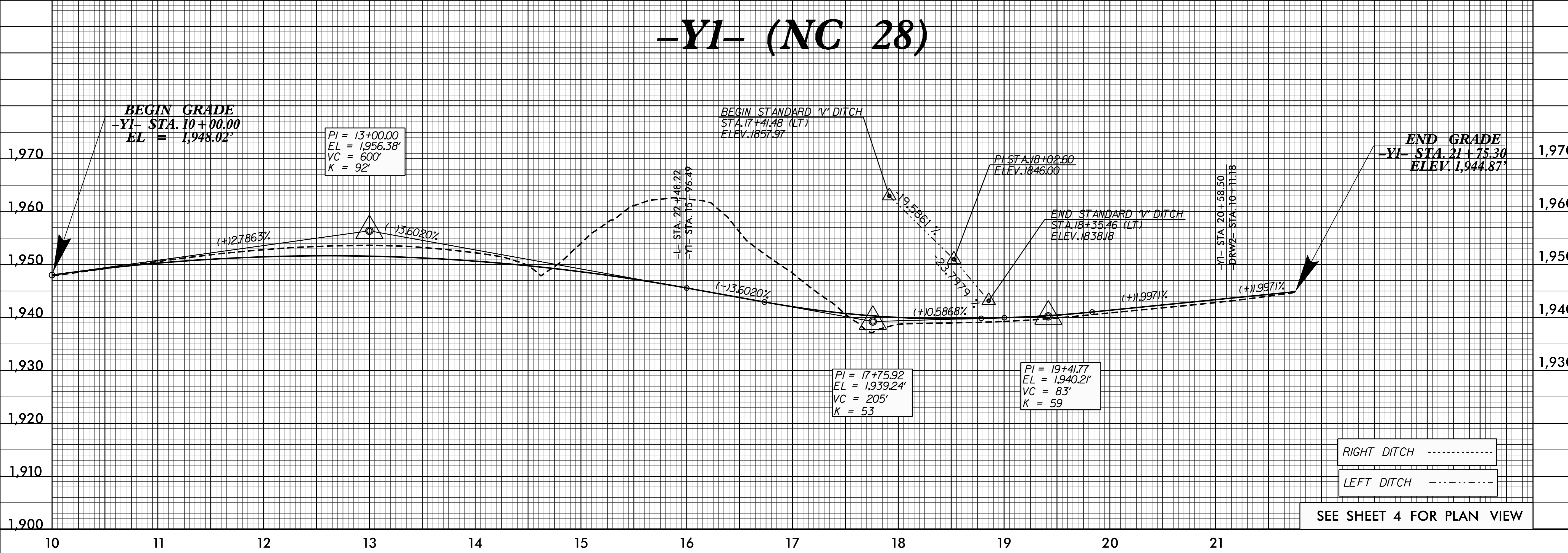
BRIDGE HYDRAULIC DATA

DESIGN DISCHARGE	= 23,800	CFS
DESIGN FREQUENCY	= 25	YRS
DESIGN HW ELEVATION	= 1,936.7	FT
BASE DISCHARGE	= 26,400	CFS
BASE FREQUENCY	= 100	YRS
BASE HW ELEVATION	= 1,938.5	FT
OVERTOPPING DISCHARGE	= 54,000	CFS
OVERTOPPING FREQUENCY	= 500+	YRS
OVERTOPPING ELEVATION	= 1,946.0	FT

CL Sta. -L- 18+83.50
 EL = 1,948.27'
 SKEW = 90°
 PLATE GIRDERS
 1 @ 90°, 1 @ 120°, 1 @ 95°
 w/4ft. CAPS



-YI- (NC 28)



RIGHT DITCH - - - - -
 LEFT DITCH - - - - -

SEE SHEET 4 FOR PLAN VIEW

REVISIONS

5/28/99

18-AUG-2015 10:03 AM B-3868_P01.dgn