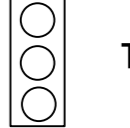

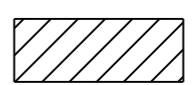
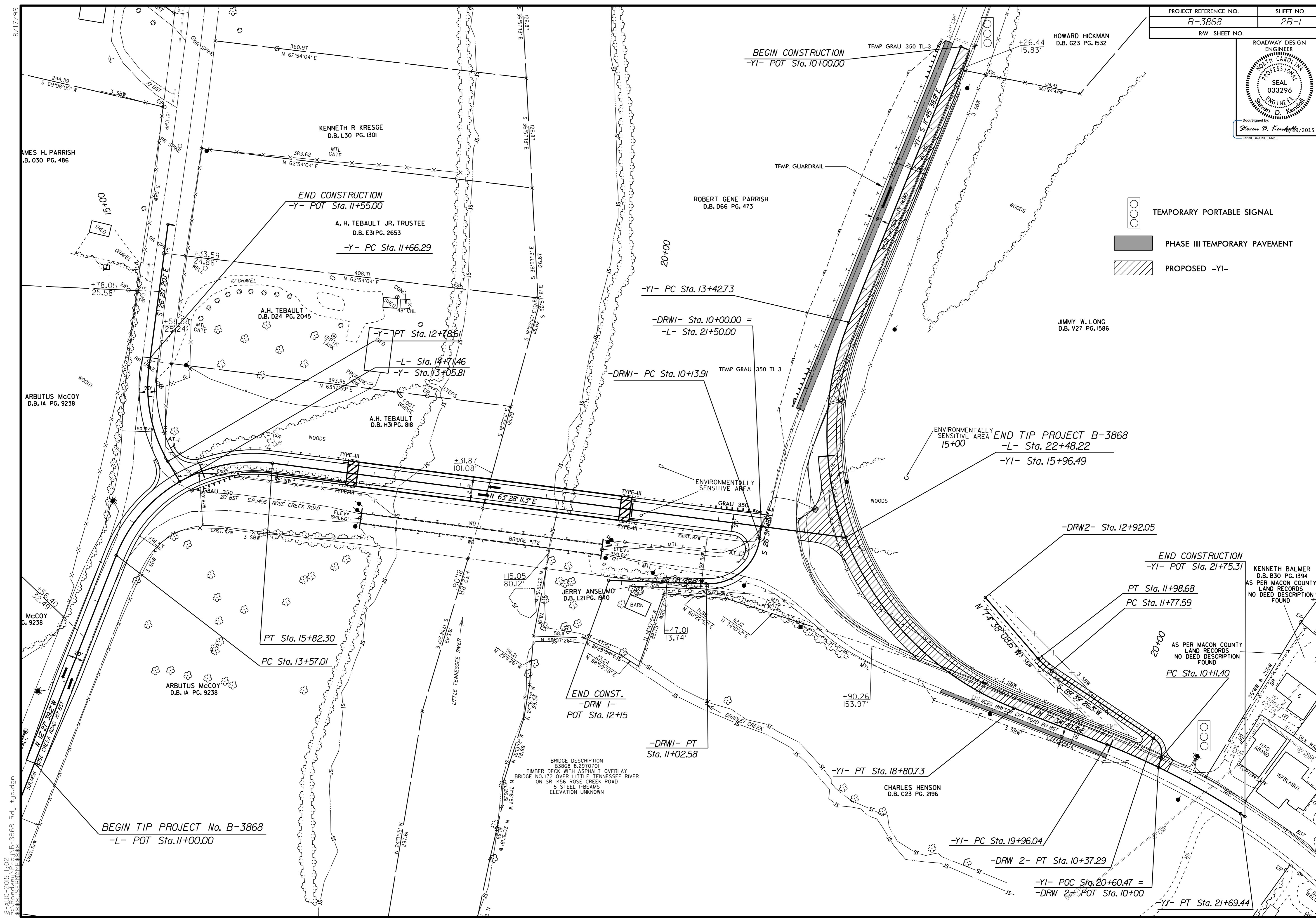


-  TEMPORARY PORTABLE SIGNAL
-  PHASE III TEMPORARY PAVEMENT
-  PROPOSED -YI-



BEGIN TIP PROJECT No. B-3868
-L- POT Sta. 11+00.00

BEGIN CONSTRUCTION
-YI- POT Sta. 10+00.00

END CONSTRUCTION
-Y- POT Sta. 11+55.00

END CONSTRUCTION
-YI- POT Sta. 21+75.31

END CONST.
-DRW 1-
POT Sta. 12+15

-YI- POC Sta. 20+60.47 =
-DRW 2- POT Sta. 10+00

BRIDGE DESCRIPTION
B3868 8.2970701
TIMBER DECK WITH ASPHALT OVERLAY
BRIDGE NO. 172 OVER LITTLE TENNESSEE RIVER
ON SR 1456 ROSE CREEK ROAD
6 STEEL I-BEAMS
ELEVATION UNKNOWN

B:\10-2015\102\102\B-3868-RdJ-tyfb.dgn
 8/17/19