

- ① ▲ 24-#4 A1 @ 1'-0" CTS. (TOP OF SLAB)  
(2 BAR RUN / 2'-0" MIN. SPLICE) (STAGE 1)
- ② ▲ 24-#4 A2 @ 1'-0" CTS. (BOTTOM OF SLAB)  
(2 BAR RUN / 1'-9" MIN. SPLICE) (STAGE 1)

**PLAN**  
AT END BENT 1

**NOTES**

APPROACH SLAB SHALL NOT BE CONSTRUCTED PRIOR TO COMPLETION OF THE BRIDGE DECK.

FOR REINFORCED BRIDGE APPROACH FILL INCLUDING GEOTEXTILE, IMPERMEABLE GEOMEMBRANE, 4" Ø DRAINAGE PIPE, #78M STONE, AND SELECT MATERIAL, SEE ROADWAY PLANS.

AREA BETWEEN THE WINGWALL AND APPROACH SLAB SHALL BE GRADED TO DRAIN THE WATER AWAY FROM THE FILL FACE OF THE BRIDGE AND SHALL BE PAVED. SEE ROADWAY PLANS.

THE JOINT SHALL BE SAWS PRIOR TO THE CASTING OF THE SIDEWALK, PARAPET AND END POST.

FOR SIDEWALK DETAILS SEE STD. NO BAS4 (SHT 2B) "STANDARD BRIDGE APPROACH SLAB DETAILS". ALSO SEE "SIDEWALK DETAILS STAGE 1" AND "SIDEWALK DETAILS STAGE 2" SHEETS.

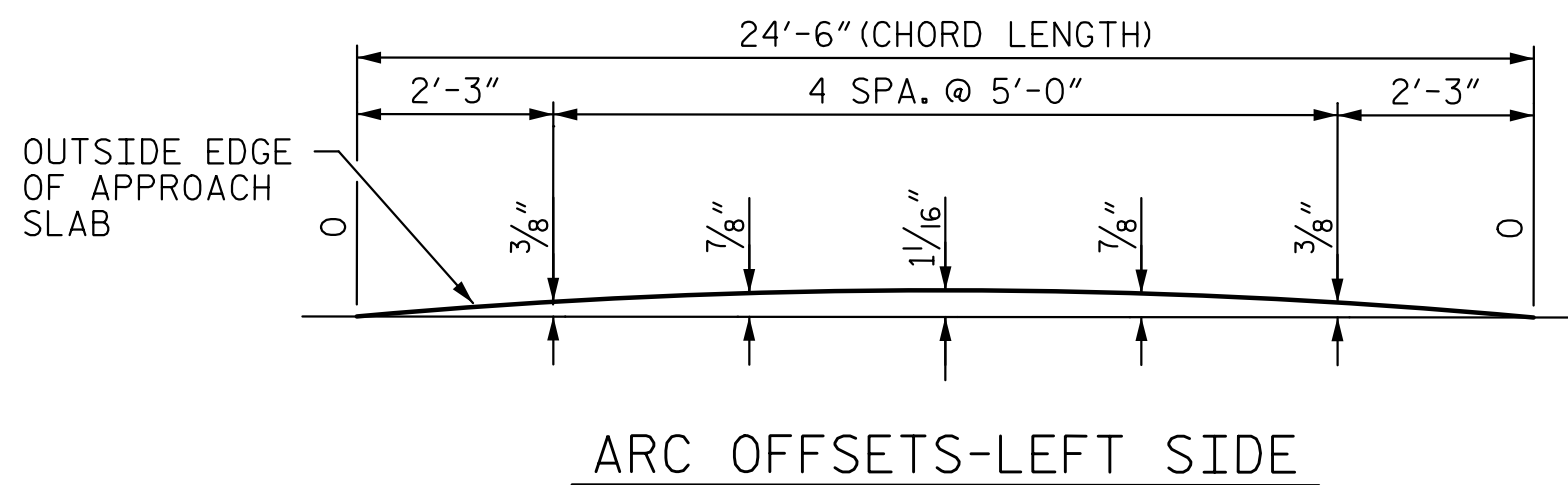
SEE "SUPERSTRUCTURE BILL OF MATERIAL" SHEETS FOR SIDEWALK QUANTITIES.

FOR FOAM JOINT SEALS, SEE SPECIAL PROVISIONS.

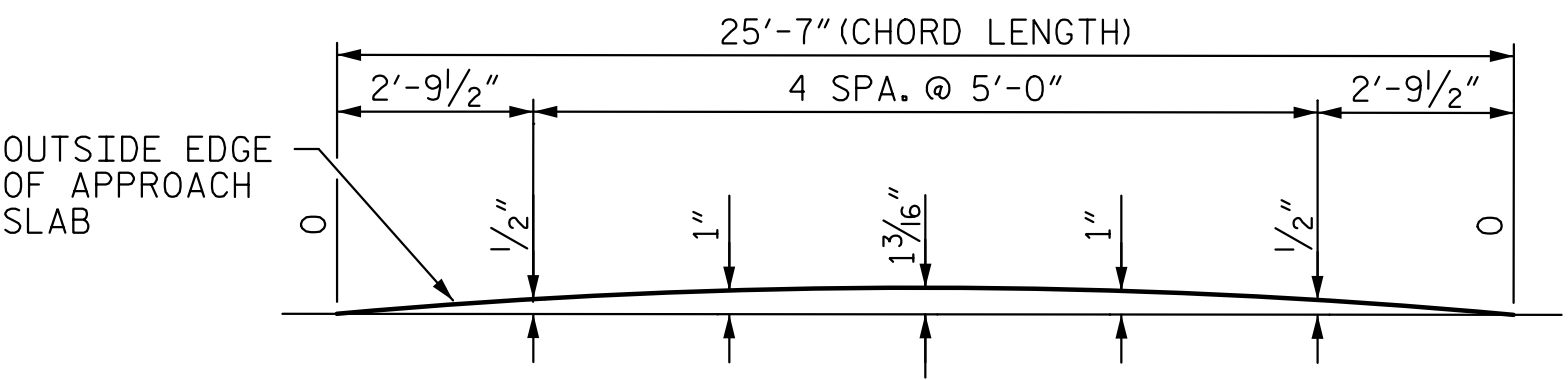
THE NOMINAL UNCOMPRESSED SEAL WIDTH OF THE FOAM JOINT SEAL SHALL BE 2".

FOR ELASTOMERIC CONCRETE, SEE SPECIAL PROVISIONS.

FOR SECTION N-N AND REINFORCING LAYOUT IN SIDEWALK, SEE SHEET 3 OF 3.



ARC OFFSETS-LEFT SIDE

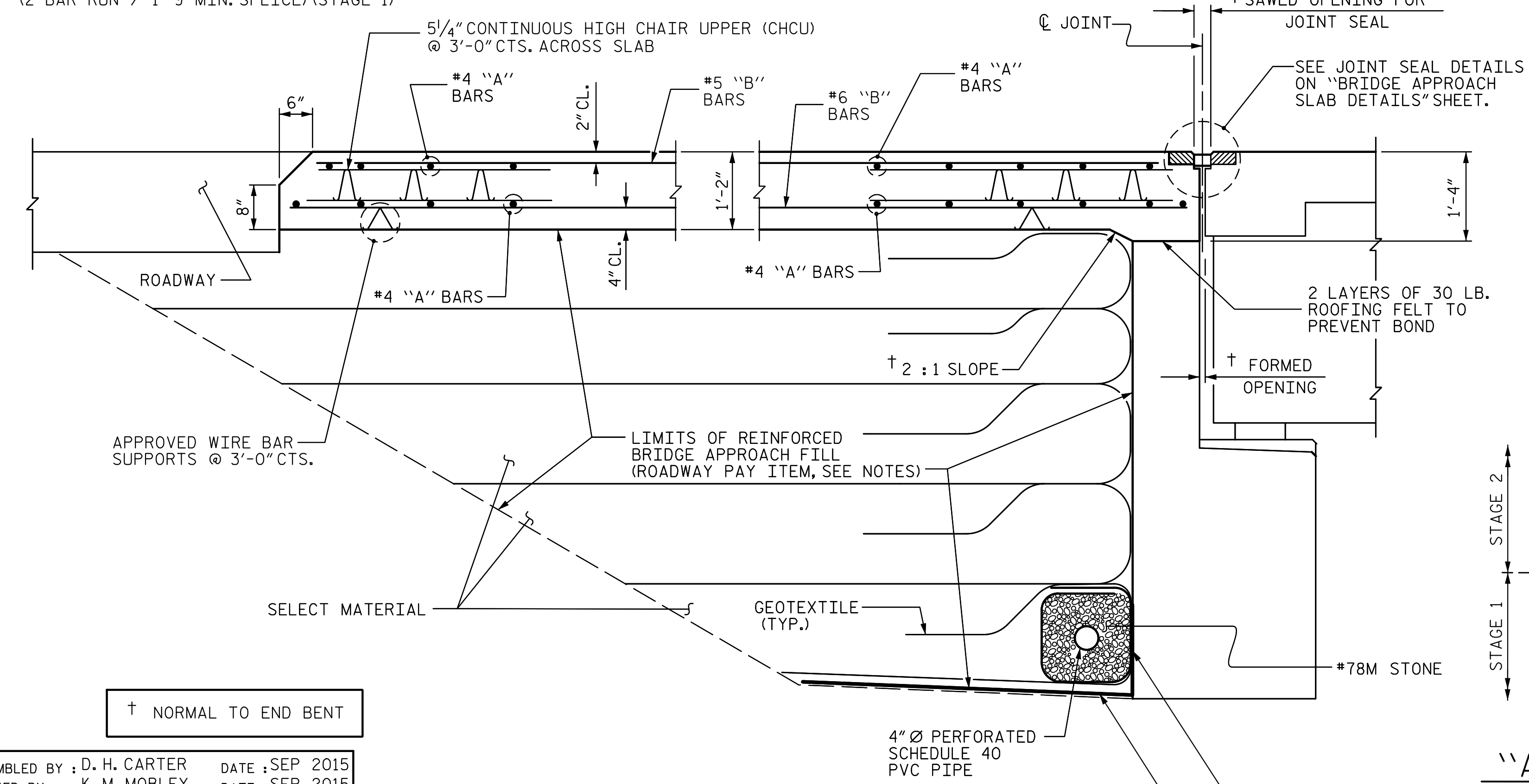


ARC OFFSETS-RIGHT SIDE

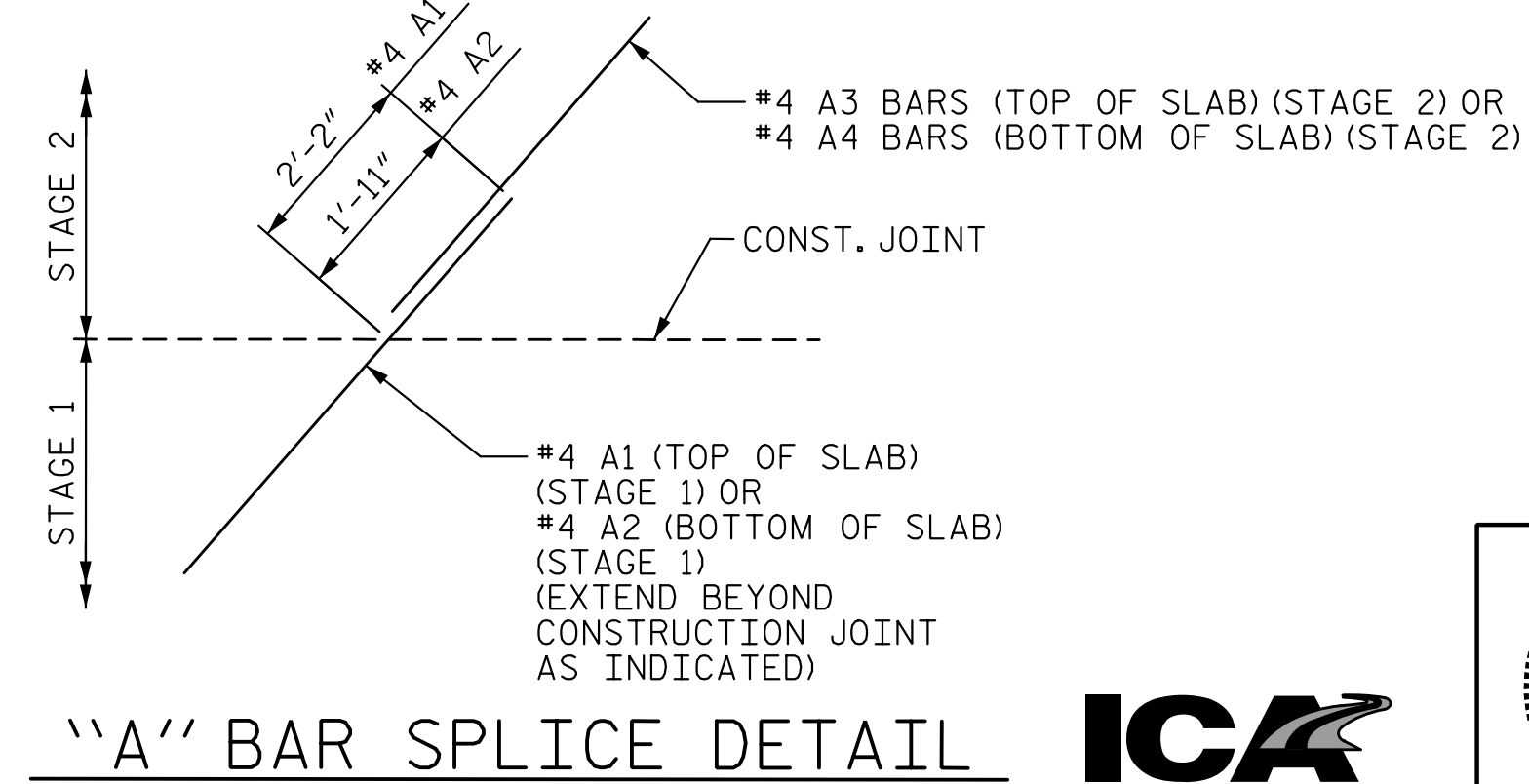
SPLICE LENGTHS		
BAR SIZE	EPOXY COATED	UNCOATED
#4	2'-0"	1'-9"
#5	2'-6"	2'-2"
#6	3'-10"	2'-7"

\* MEASURED RADIALLY

▲ "A" BARS ARE SPACED ALONG APPROACH SLAB SHORT CHORD AND PLACED PARALLEL TO FILL FACE.



**SECTION THRU SLAB**

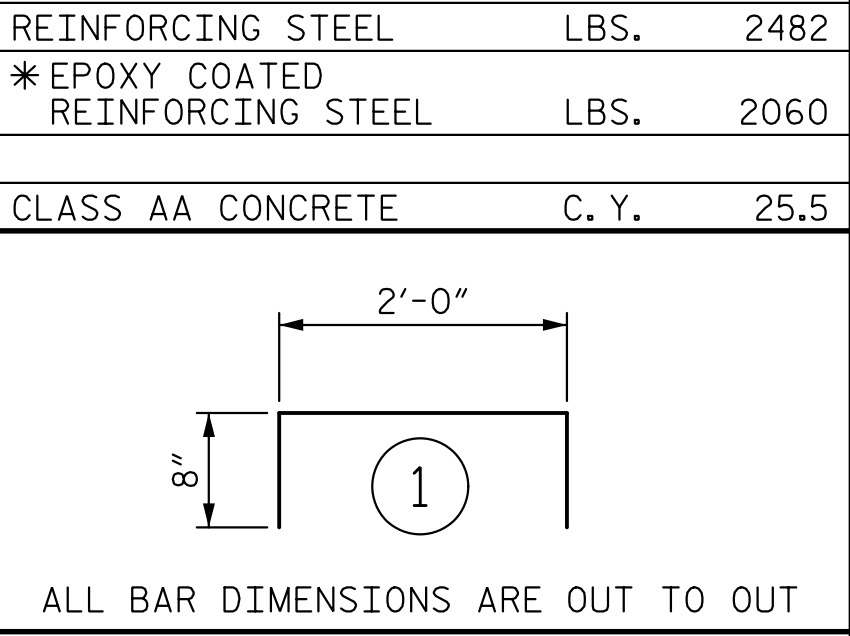


"A" BAR SPLICE DETAIL

**BILL OF MATERIAL**

APPROACH SLAB AT END BENT 1 - STAGE 1					
BAR	NO.	SIZE	TYPE	LENGTH	WEIGHT
*A1	50	#4	STR	18'-0"	601
A2	52	#4	STR	17'-9"	617
*B1	94	#5	STR	13'-6"	1324
B2	94	#6	STR	13'-10"	1953
*B5	10	#4	STR	13'-7"	91
*G1	25	#4	STR	6'-6"	109
*U1	8	#4	1	3'-4"	18
REINFORCING STEEL				LBS.	2570
* EPOXY COATED REINFORCING STEEL				LBS.	2143
CLASS AA CONCRETE				C. Y.	25.5

APPROACH SLAB AT END BENT 1 - STAGE 2					
BAR	NO.	SIZE	TYPE	LENGTH	WEIGHT
*A3	50	#4	STR	16'-5"	548
A4	52	#4	STR	16'-3"	564
*B3	94	#5	STR	13'-3"	1299
B4	94	#6	STR	13'-7"	1918
*B5	10	#4	STR	13'-7"	91
*G2	25	#4	STR	6'-3"	104
*U1	8	#4	1	3'-4"	18
REINFORCING STEEL				LBS.	2482
* EPOXY COATED REINFORCING STEEL				LBS.	2060
CLASS AA CONCRETE				C. Y.	25.5



ALL BAR DIMENSIONS ARE OUT TO OUT

ASSEMBLED BY : D. H. CARTER DATE : SEP 2015  
 CHECKED BY : K. M. MOBLEY DATE : SEP 2015  
 DRAWN BY : EEM 3/95 REV. 10/1/11 MAA/GM  
 CHECKED BY : VAP 3/95 REV. 12/21/11 MAA/GM  
 REV. 6/13 MAA/GM

PROJECT NO. B-4159  
 JACKSON COUNTY  
 STATION: 20+16.00 -L-  
 SHEET 1 OF 3

STATE OF NORTH CAROLINA DEPARTMENT OF TRANSPORTATION RALEIGH					
BRIDGE APPROACH SLAB FOR FLEXIBLE PAVEMENT AT END BENT 1					
REVISIONS					
NO.	BY:	DATE:	NO.	BY:	DATE:
1			3		
2			4		

