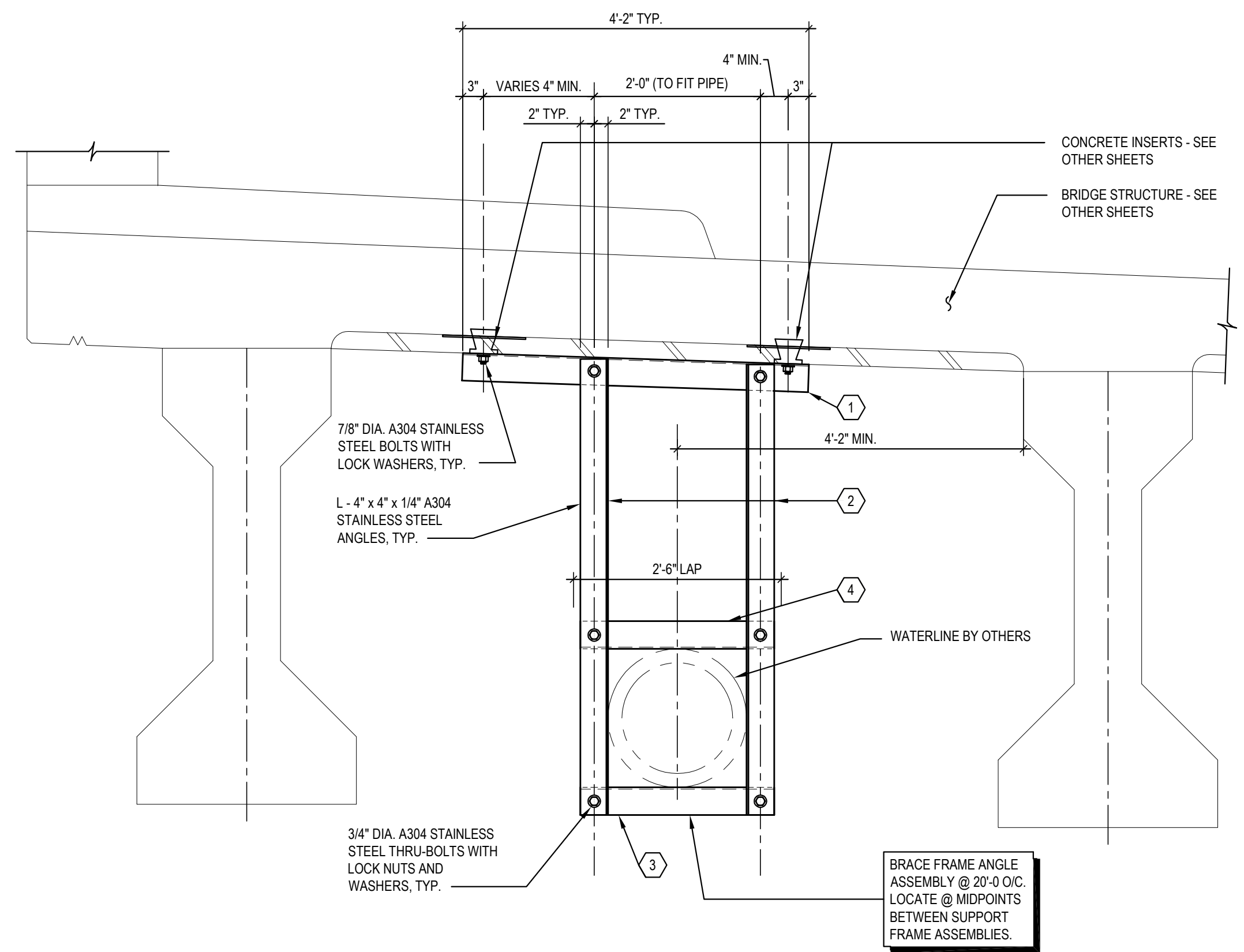
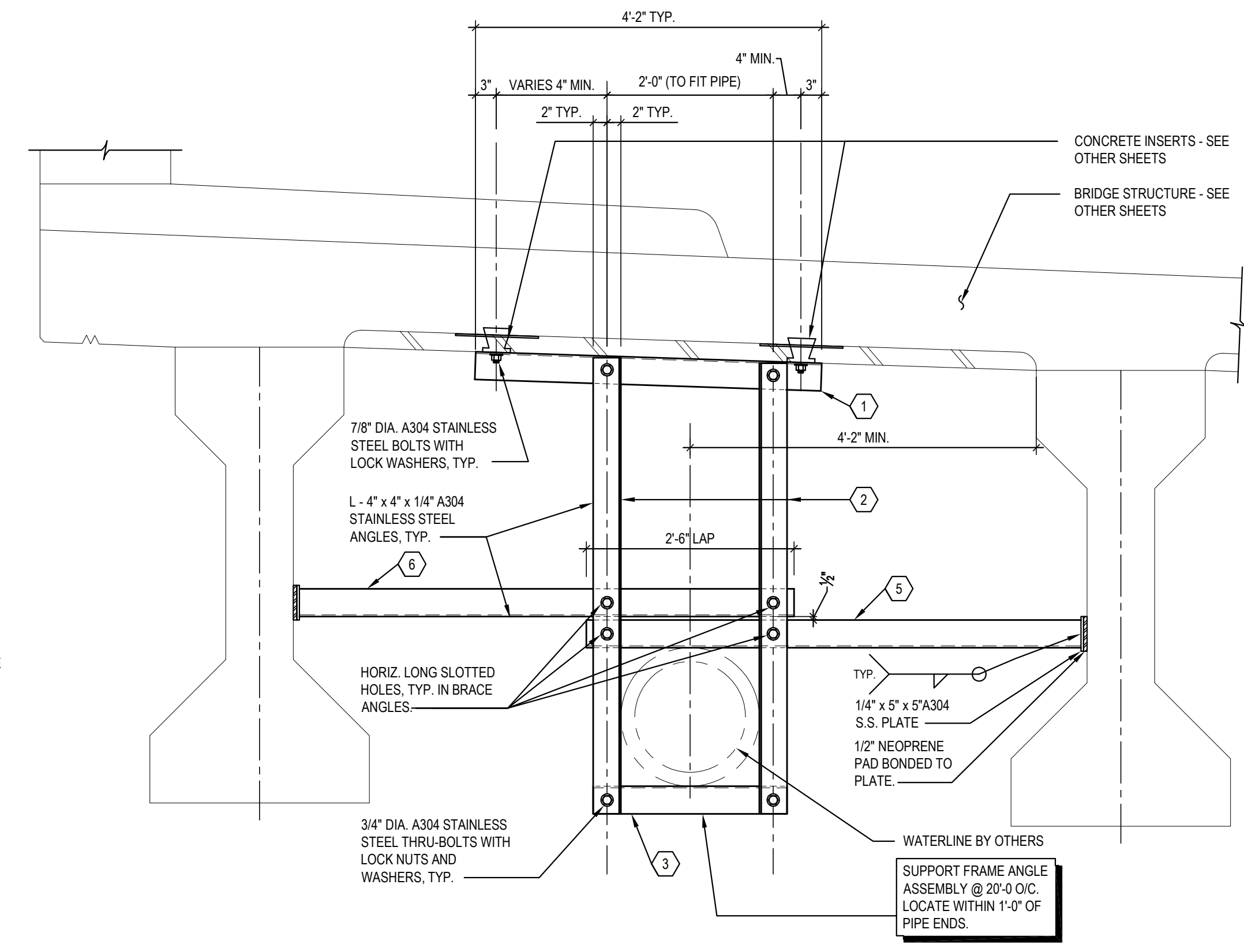


- PIPE HANGER ASSEMBLY INSTALLATION PROCEDURE NOTES:
1. ALL PIPE HANGER ASSEMBLIES SHALL BE FIELD FABRICATED FROM STOCK LENGTH MATERIALS. ALL ANGLES, BOLTS, WASHERS, ETC. SHALL BE FABRICATED FROM A304 STAINLESS STEEL.
 2. ALL CUTS SHALL BE MADE USING BAND SAWS OR SIMILAR CUTTING DEVICES. ALL HOLES SHALL BE DRILLED. FLAME CUTTING IS PROHIBITED.
 3. EMBEDDED CONCRETE INSERTS SHALL BE INSTALLED AS INDICATED ON THE PIPING DRAWINGS. THE CONTRACTOR SHALL FIELD DRILL HOLES IN THE ATTACHMENT ANGLE TO MATCH THE ACTUAL LAYOUT AND POSITIONING OF THE EMBEDDED INSERTS. ATTACHMENT TO THE INSERTS SHALL BE MADE USING FLAT WASHERS AND LOCK WASHERS TO PREVENT LOOSENING OF THE NUTS.
 4. LOCATIONS FOR BOLTING THE VERTICAL HANGER ANGLES TO THE ATTACHMENT ANGLE SHALL BE FIELD LOCATED BASED ON THE ARC OF THE PIPE AS INDICATED ON THE DRAWINGS. VERTICAL HANGER ANGLES SHALL BE POSITIONED TO BE SNUG AGAINST THE SIDES OF THE PIPE. ALLOW FOR INSTALLATION OF INSULATION PROTECTION AS INDICATED ON THE PIPING DRAWINGS.
 5. VERTICAL HANGER ANGLES SHALL BE BOLTED TO THE ATTACHMENT ANGLE USING FLAT WASHERS AND LOCKING WASHERS TO PREVENT LOOSENING ON THE NUTS.
 6. LOWER CROSS MEMBER SHALL BE BOLTED TO THE VERTICAL HANGER ANGLES TO SUPPORT THE PIPE VERTICALLY AT THE POSITION INDICATED ON THE PIPING DRAWINGS.
 7. LOCATE UPPER CROSS MEMBER AT TYPICAL SUPPORT ANGLE ASSEMBLY TO FIT SNUGLY AGAINST THE TOP OF THE PIPE AND BOLT IN PLACE USING FLAT AND LOCK WASHERS TO PREVENT LOOSENING OF THE NUTS.
 8. AT THE TYPICAL LATERAL BRACE ANGLE ASSEMBLIES, LOCATE THE LOWER LATERAL BRACING ANGLE TO FIT SNUGLY AGAINST THE TOP OF THE PIPE. LOCATE THE UPPER LATERAL BRACING ANGLE APPROXIMATELY 1/2" ABOVE THE TOP OF THE VERTICAL LEG OF THE LOWER LATERAL BRACING ANGLE. DETERMINE THE LOCATION OF THE SLOTTED HOLES IN THE LATERAL BRACING ANGLES TO FIT THE NEOPRENE BEARING PADS TIGHTLY AGAINST THE VERTICAL SIDES OF THE PRECAST CONCRETE GIRDERS. WHEN THE NEOPRENE PADS ARE TIGHT AGAINST THE SIDES OF THE GIRDERS, LOCK THE LATERAL BRACING ANGLES TO THE VERTICAL HANGER ANGLES USING LOCKING WASHERS ONLY TO PREVENT LOOSENING OF THE NUTS AND SLIPPING OF THE LATERAL BRACING ANGLES.



1
 TYPICAL SECTION @
 SUPPORT ANGLE ASSEMBLY
 S-60
 3/4" = 1'-0"
 Dwg # 150248-S6001.DWG

- LEGEND
- 1 ATTACHMENT ANGLE
 - 2 VERTICAL HANGER ANGLE
 - 3 LOWER CROSS MEMBER
 - 4 UPPER CROSS MEMBER
 - 5 LOWER LATERAL BRACING ANGLE
 - 6 UPPER LATERAL BRACING ANGLE



2
 TYPICAL SECTION @ LATERAL
 BRACE ANGLE ASSEMBLY
 S-60
 3/4" = 1'-0"
 Dwg # 150248-S6002.DWG