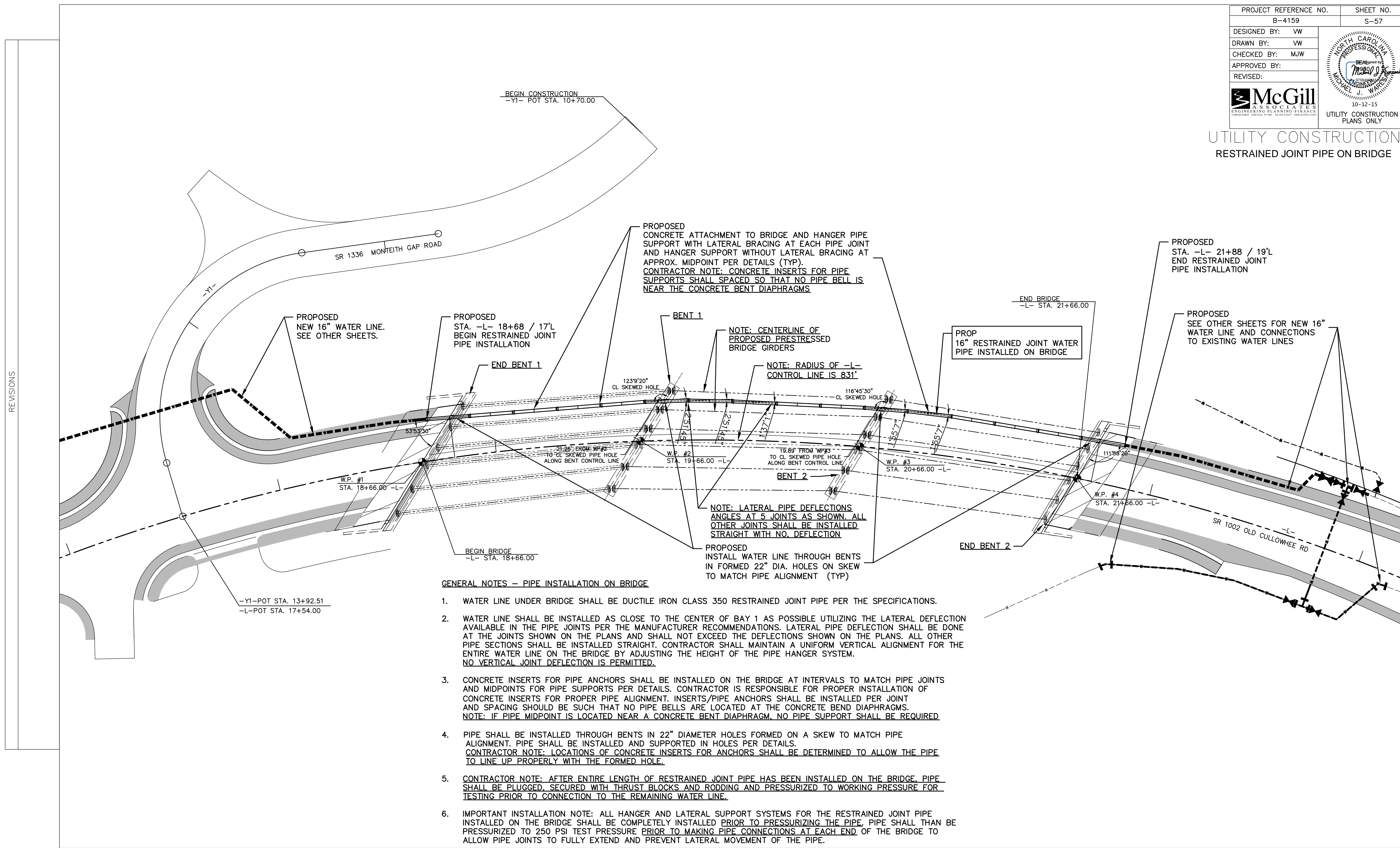


PROJECT REFERENCE NO. B-4159	SHEET NO. S-57
DESIGNED BY: VW	
DRAWN BY: VW	
CHECKED BY: MJW	
APPROVED BY:	
REVISD:	
ENGINEERING PLANNING FINANCE 10-12-15 UTILITY CONSTRUCTION PLANS ONLY	

UTILITY CONSTRUCTION
RESTRAINED JOINT PIPE ON BRIDGE



PROPOSED CONCRETE ATTACHMENT TO BRIDGE AND HANGER PIPE SUPPORT WITH LATERAL BRACING AT EACH PIPE JOINT AND HANGER SUPPORT WITHOUT LATERAL BRACING AT APPROX. MIDPOINT PER DETAILS (TYP).
CONTRACTOR NOTE: CONCRETE INSERTS FOR PIPE SUPPORTS SHALL SPACED SO THAT NO PIPE BELL IS NEAR THE CONCRETE BENT DIAPHRAGMS

NOTE: CENTERLINE OF PROPOSED PRESTRESSED BRIDGE GIRDERS
NOTE: RADIUS OF -L- CONTROL LINE IS 831'

NOTE: LATERAL PIPE DEFLECTIONS ANGLES AT 5 JOINTS AS SHOWN. ALL OTHER JOINTS SHALL BE INSTALLED STRAIGHT WITH NO. DEFLECTION
PROPOSED INSTALL WATER LINE THROUGH BENTS IN FORMED 22" DIA. HOLES ON SKEW TO MATCH PIPE ALIGNMENT (TYP)

GENERAL NOTES -- PIPE INSTALLATION ON BRIDGE

1. WATER LINE UNDER BRIDGE SHALL BE DUCTILE IRON CLASS 350 RESTRAINED JOINT PIPE PER THE SPECIFICATIONS.
2. WATER LINE SHALL BE INSTALLED AS CLOSE TO THE CENTER OF BAY 1 AS POSSIBLE UTILIZING THE LATERAL DEFLECTION AVAILABLE IN THE PIPE JOINTS PER THE MANUFACTURER RECOMMENDATIONS. LATERAL PIPE DEFLECTION SHALL BE DONE AT THE JOINTS SHOWN ON THE PLANS AND SHALL NOT EXCEED THE DEFLECTIONS SHOWN ON THE PLANS. ALL OTHER PIPE SECTIONS SHALL BE INSTALLED STRAIGHT. CONTRACTOR SHALL MAINTAIN A UNIFORM VERTICAL ALIGNMENT FOR THE ENTIRE WATER LINE ON THE BRIDGE BY ADJUSTING THE HEIGHT OF THE PIPE HANGER SYSTEM. NO VERTICAL JOINT DEFLECTION IS PERMITTED.
3. CONCRETE INSERTS FOR PIPE ANCHORS SHALL BE INSTALLED ON THE BRIDGE AT INTERVALS TO MATCH PIPE JOINTS AND MIDPOINTS FOR PIPE SUPPORTS PER DETAILS. CONTRACTOR IS RESPONSIBLE FOR PROPER INSTALLATION OF CONCRETE INSERTS FOR PROPER PIPE ALIGNMENT. INSERTS/PIPE ANCHORS SHALL BE INSTALLED PER JOINT AND SPACING SHOULD BE SUCH THAT NO PIPE BELLS ARE LOCATED AT THE CONCRETE BENT DIAPHRAGMS. NOTE: IF PIPE MIDPOINT IS LOCATED NEAR A CONCRETE BENT DIAPHRAGM, NO PIPE SUPPORT SHALL BE REQUIRED
4. PIPE SHALL BE INSTALLED THROUGH BENTS IN 22" DIAMETER HOLES FORMED ON A SKEW TO MATCH PIPE ALIGNMENT. PIPE SHALL BE INSTALLED AND SUPPORTED IN HOLES PER DETAILS. CONTRACTOR NOTE: LOCATIONS OF CONCRETE INSERTS FOR ANCHORS SHALL BE DETERMINED TO ALLOW THE PIPE TO LINE UP PROPERLY WITH THE FORMED HOLE.
5. CONTRACTOR NOTE: AFTER ENTIRE LENGTH OF RESTRAINED JOINT PIPE HAS BEEN INSTALLED ON THE BRIDGE, PIPE SHALL BE PLUGGED, SECURED WITH THRUST BLOCKS AND RODDING AND PRESSURIZED TO WORKING PRESSURE FOR TESTING PRIOR TO CONNECTION TO THE REMAINING WATER LINE.
6. IMPORTANT INSTALLATION NOTE: ALL HANGER AND LATERAL SUPPORT SYSTEMS FOR THE RESTRAINED JOINT PIPE INSTALLED ON THE BRIDGE SHALL BE COMPLETELY INSTALLED PRIOR TO PRESSURIZING THE PIPE. PIPE SHALL THAN BE PRESSURIZED TO 250 PSI TEST PRESSURE PRIOR TO MAKING PIPE CONNECTIONS AT EACH END OF THE BRIDGE TO ALLOW PIPE JOINTS TO FULLY EXTEND AND PREVENT LATERAL MOVEMENT OF THE PIPE.

REVISIONS