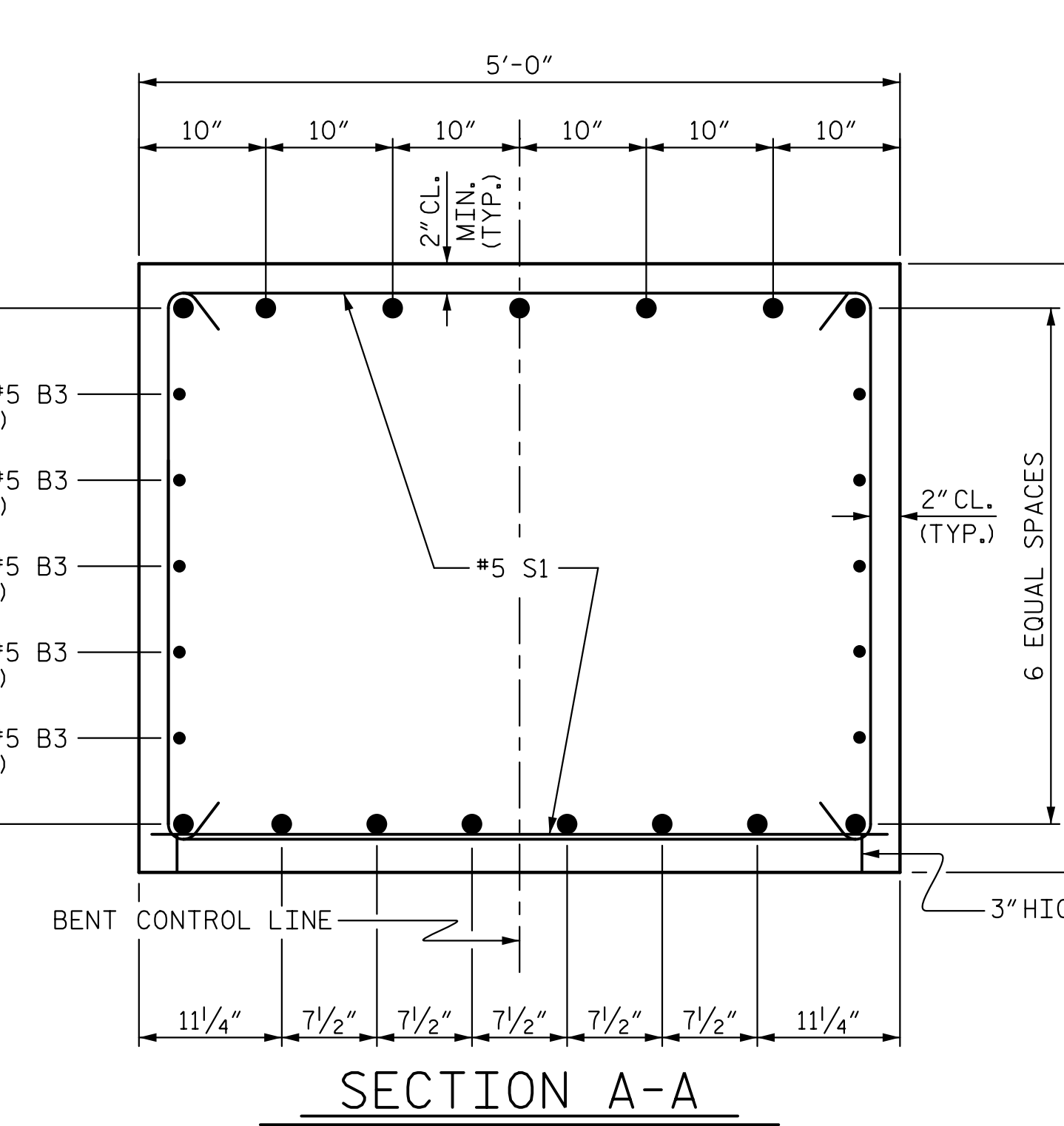
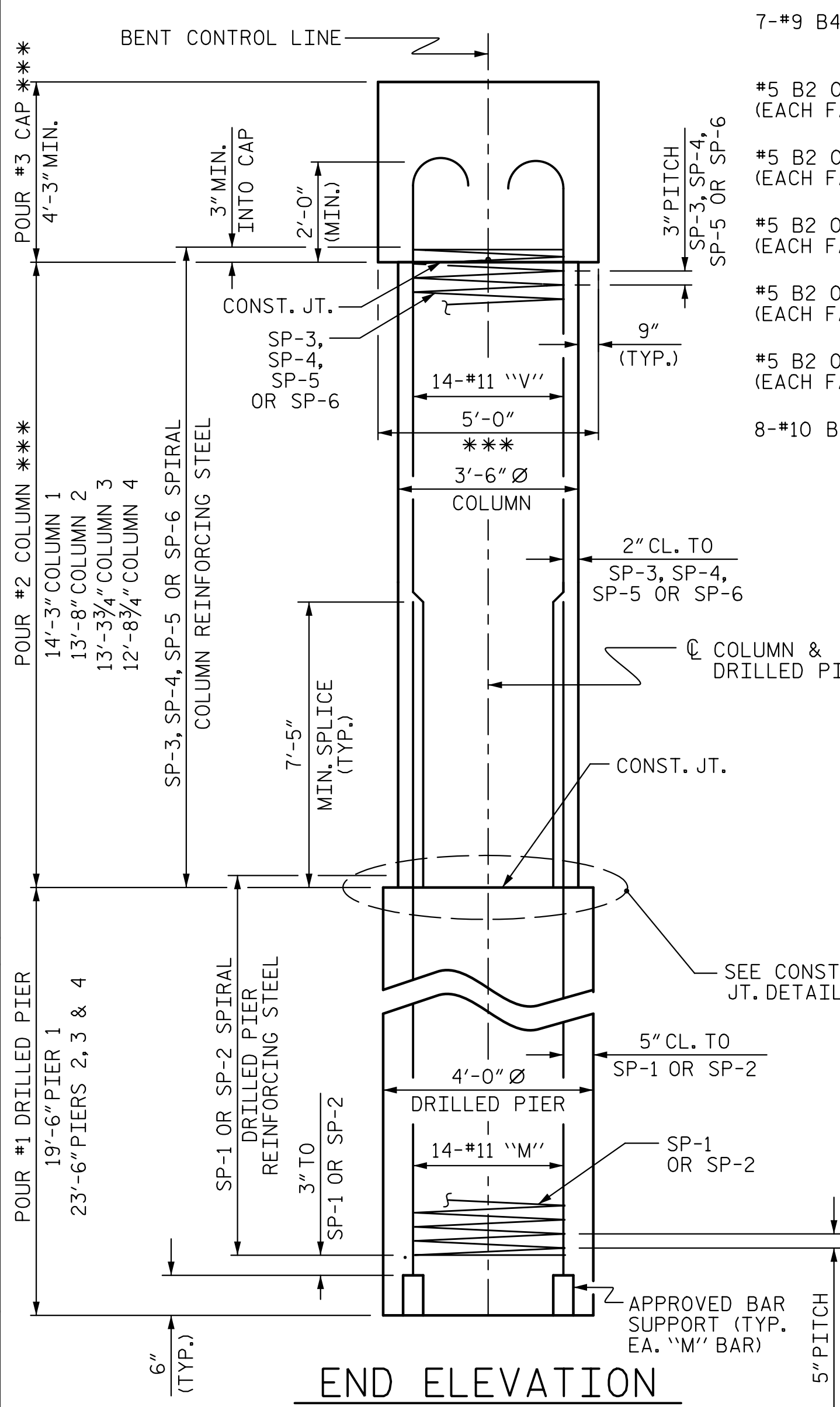


END OF CAP DETAIL (TYP.)

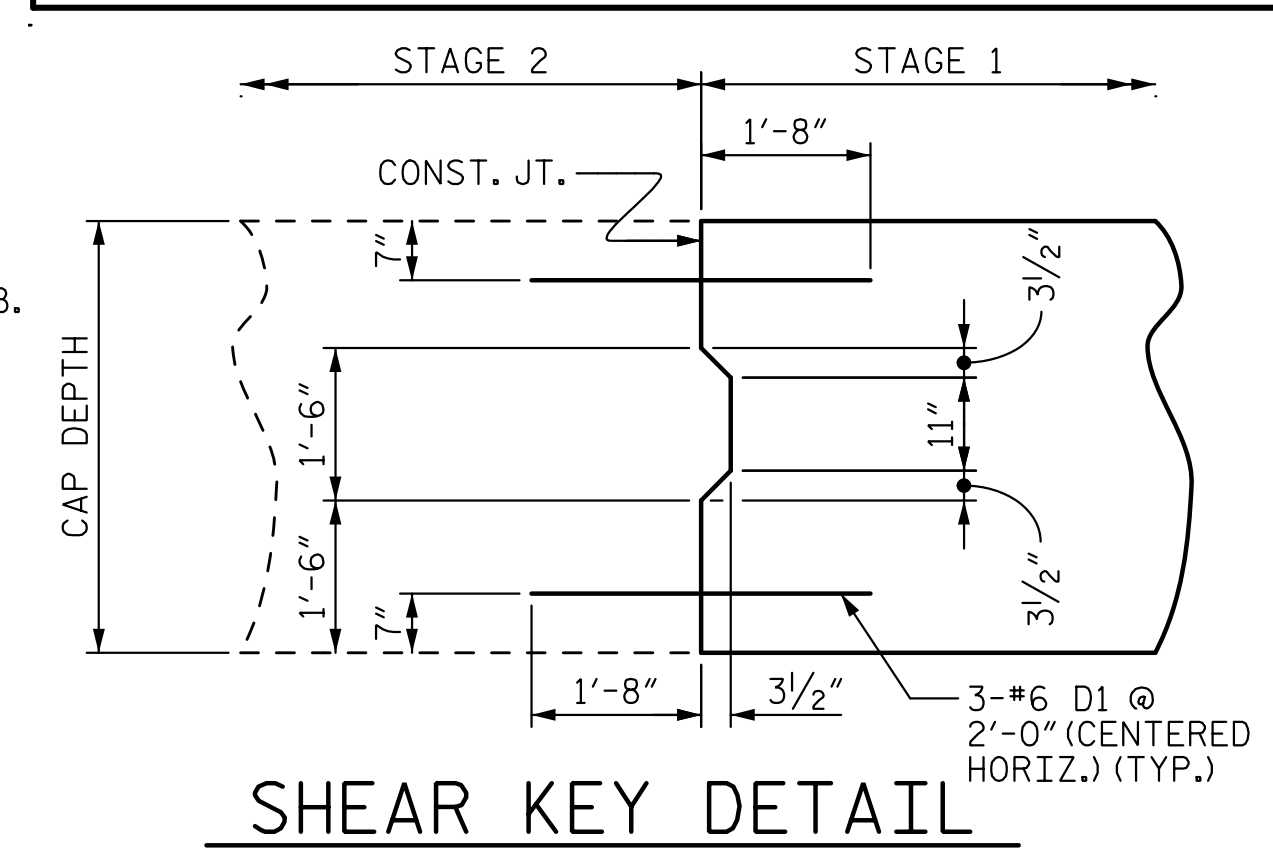
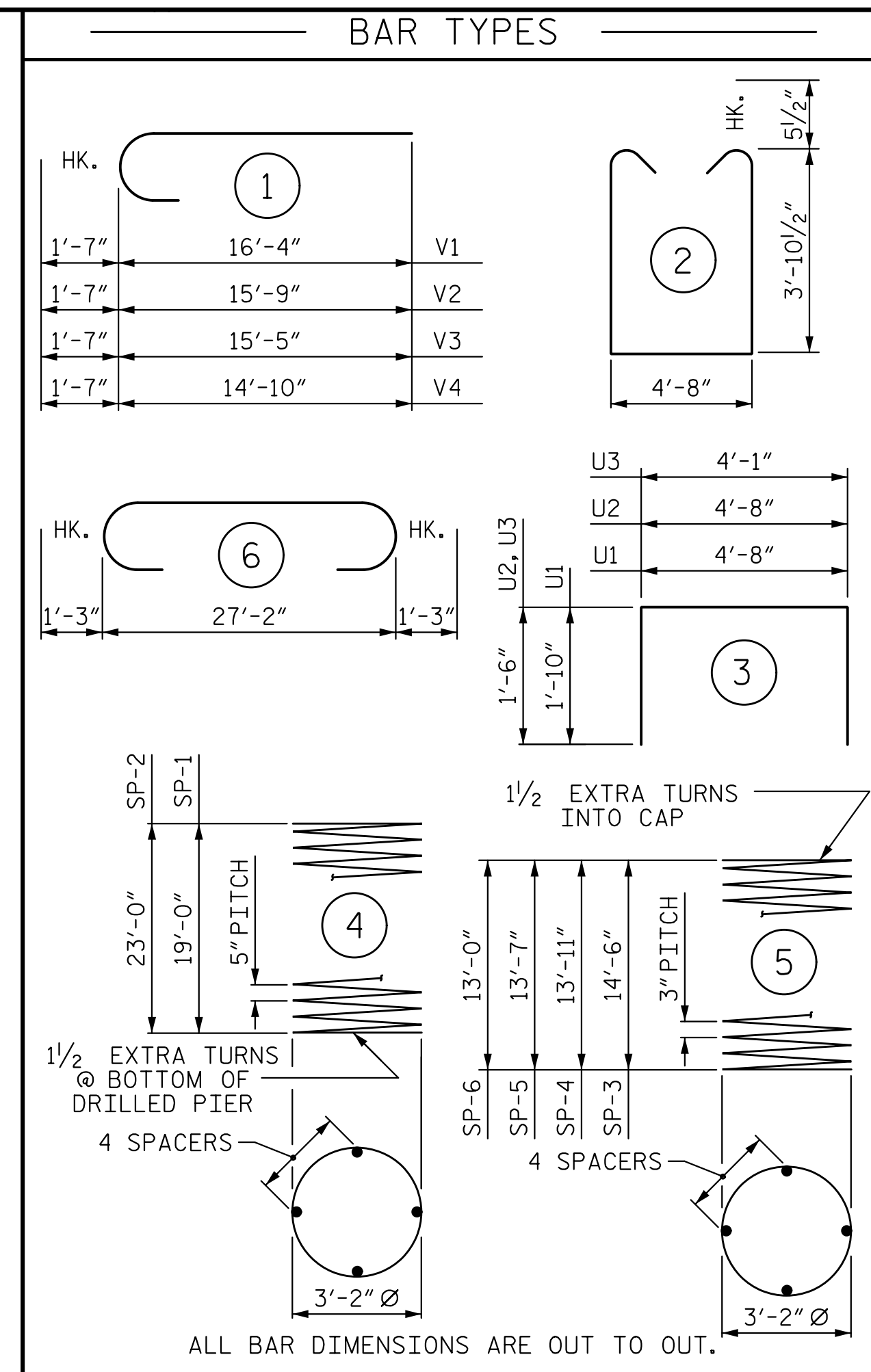


SECTION A-A

*** SEE SPECIAL PROVISIONS FOR APPLICATION OF BRIDGE COATING. LIMITS TO INCLUDE ENTIRE SURFACE OF COLUMNS AND BENT CAP EXCEPT FOR THE TOP OF THE CAP.



END ELEVATION



SHEAR KEY DETAIL

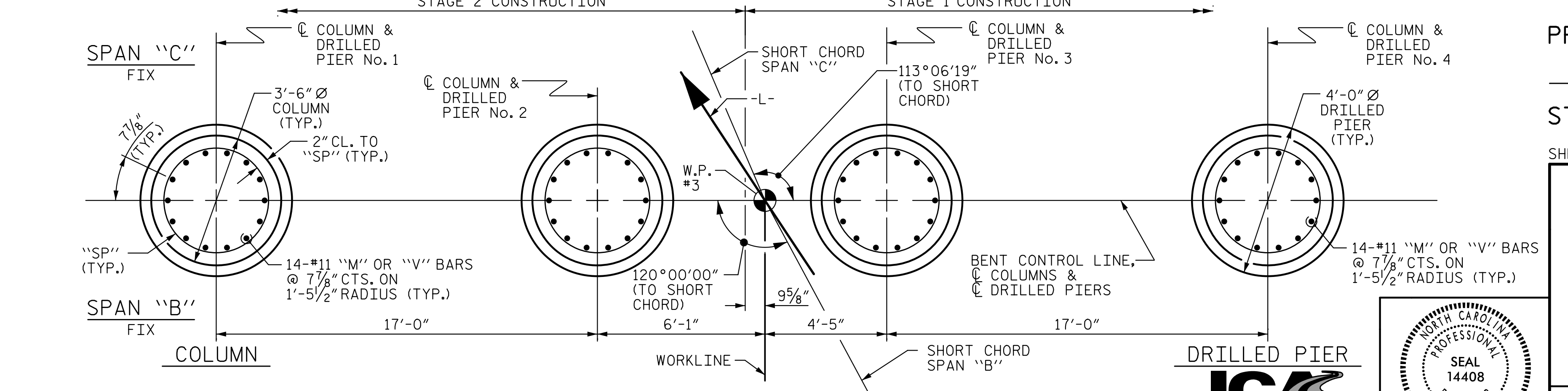
BILL OF MATERIAL STAGE 1						BILL OF MATERIAL STAGE 2					
BAR NO.	SIZE	TYPE	LENGTH	WEIGHT		BAR NO.	SIZE	TYPE	LENGTH	WEIGHT	
B1	#8	#10	STR	27'-2"	935	B1	#8	#10	STR	27'-2"	935
B3	10	#5	STR	26'-10"	280	B2	10	#5	STR	27'-2"	283
B4	7	#9	6	29'-8"	706	B4	7	#9	6	29'-8"	706
B5	5	#4	STR	11'-2"	37	B6	5	#4	STR	5'-2"	17
B8	5	#4	STR	4'-7"	15	B7	10	#4	STR	9'-1"	61
B9	5	#4	STR	10'-7"	35						
						M1	14	#11	STR	29'-5"	2188
						M2	14	#11	STR	33'-5"	2486
						M2	28	#11	STR	33'-5"	4971
						S1	31	#5	2	13'-4"	431
						S1	42	#5	2	13'-4"	584
						U1	42	#4	3	8'-4"	234
						U2	5	#4	3	7'-8"	26
						U3	5	#4	3	7'-1"	24
						V1	14	#11	1	17'-11"	1333
						V2	14	#11	1	17'-4"	1289
						V3	14	#11	1	17'-0"	1264
						V4	14	#11	1	16'-5"	1221

REINFORCING STEEL (STAGE 1)						REINFORCING STEEL (STAGE 2)					
BAR NO.	SIZE	TYPE	LENGTH	WEIGHT		BAR NO.	SIZE	TYPE	LENGTH	WEIGHT	
SP-2	2	*	4	555'-10"	1159	SP-1	1	*	4	462'-9"	483
SP-5	1	**	5	550'-0"	367	SP-2	1	*	4	555'-10"	580
SP-6	1	**	5	527'-11"	353	SP-3	1	**	5	586'-10"	392
						SP-4	1	**	5	564'-9"	377

SPIRAL COLUMN REINFORCING STEEL (STAGE 1)						SPIRAL COLUMN REINFORCING STEEL (STAGE 2)					
BAR NO.	SIZE	TYPE	LENGTH	WEIGHT		BAR NO.	SIZE	TYPE	LENGTH	WEIGHT	
					1879 LBS.						1832 LBS.

CLASS A CONCRETE BREAKDOWN (STAGE 1)						CLASS A CONCRETE BREAKDOWN (STAGE 2)					
POUR	NO.	TYPE	LENGTH	WEIGHT		POUR	NO.	TYPE	LENGTH	WEIGHT	
POUR #2	(COLUMNS)			9.2 C.Y.		POUR #2	(COLUMNS)			10.0 C.Y.	
POUR #3	(CAP)			22.8 C.Y.		POUR #3	(CAP)			22.7 C.Y.	
TOTAL CLASS A CONCRETE				32.0 C.Y.		TOTAL CLASS A CONCRETE				32.7 C.Y.	

DRILLED PIERS: (STAGE 1)						DRILLED PIERS: (STAGE 2)					
POUR	NO.	TYPE	LENGTH	WEIGHT		POUR	NO.	TYPE	LENGTH	WEIGHT	
DRILLED PIER CONCRETE					21.9 C.Y.	DRILLED PIER CONCRETE					20.0 C.Y.
4'-0" Ø DRILLED PIER NOT IN SOIL				18.5 LIN. FT.		4'-0" Ø DRILLED PIER NOT IN SOIL				18.5 LIN. FT.	
4'-0" Ø DRILLED PIER IN SOIL				28.5 LIN. FT.		4'-0" Ø DRILLED PIER IN SOIL				24.5 LIN. FT.	
PERMANENT STEEL CASING FOR 4'-0" Ø DRILLED PIER				30.0 LIN. FT.		PERMANENT STEEL CASING FOR 4'-0" Ø DRILLED PIER				24.0 LIN. FT.	
CSL TUBES				200.0 LIN. FT.		CSL TUBES				184.0 LIN. FT.	



PLAN OF DRILLED PIERS & COLUMNS (DETAILS ARE TYPICAL EACH DRILLED PIER & COLUMN)

PROJECT NO. B-4159
JACKSON COUNTY
 STATION: 20+16.00 -L-
 SHEET 2 OF 2

STATE OF NORTH CAROLINA
 DEPARTMENT OF TRANSPORTATION
 RALEIGH

SUBSTRUCTURE
 BENT 2

REVISIONS					
NO.	BY:	DATE:	NO.	BY:	DATE:
1			3		
2			4		

SHEET NO. S-52
 TOTAL SHEETS 64

ICAE Engineering
 5121 Kingdom Way, Suite 100 Raleigh, NC 27607
 NC License No. P-0295

THOMAS E. TALLMAN
 PROFESSIONAL ENGINEER
 SEAL 14408
 10/15/2015

10/14/2015
 T:\Projects\Bent2\Bent2.dwg
 T.E. Tallman

DRAWN BY: D. H. CARTER DATE: OCT 2015
 CHECKED BY: K. M. MOBLEY/T. E. TALLMAN DATE: OCT 2015
 DESIGN ENGINEER OF RECORD: T. E. TALLMAN DATE: OCT 2015