

NOTES

HOOKS ON "V" BARS MAY BE TURNED AS NECESSARY FOR PLACING REINFORCING STEEL.

ALL STEEL IN THE DRILLED PIERS IS INCLUDED IN THE PAY ITEMS FOR "REINFORCING STEEL" AND "SPIRAL COLUMN REINFORCING STEEL."

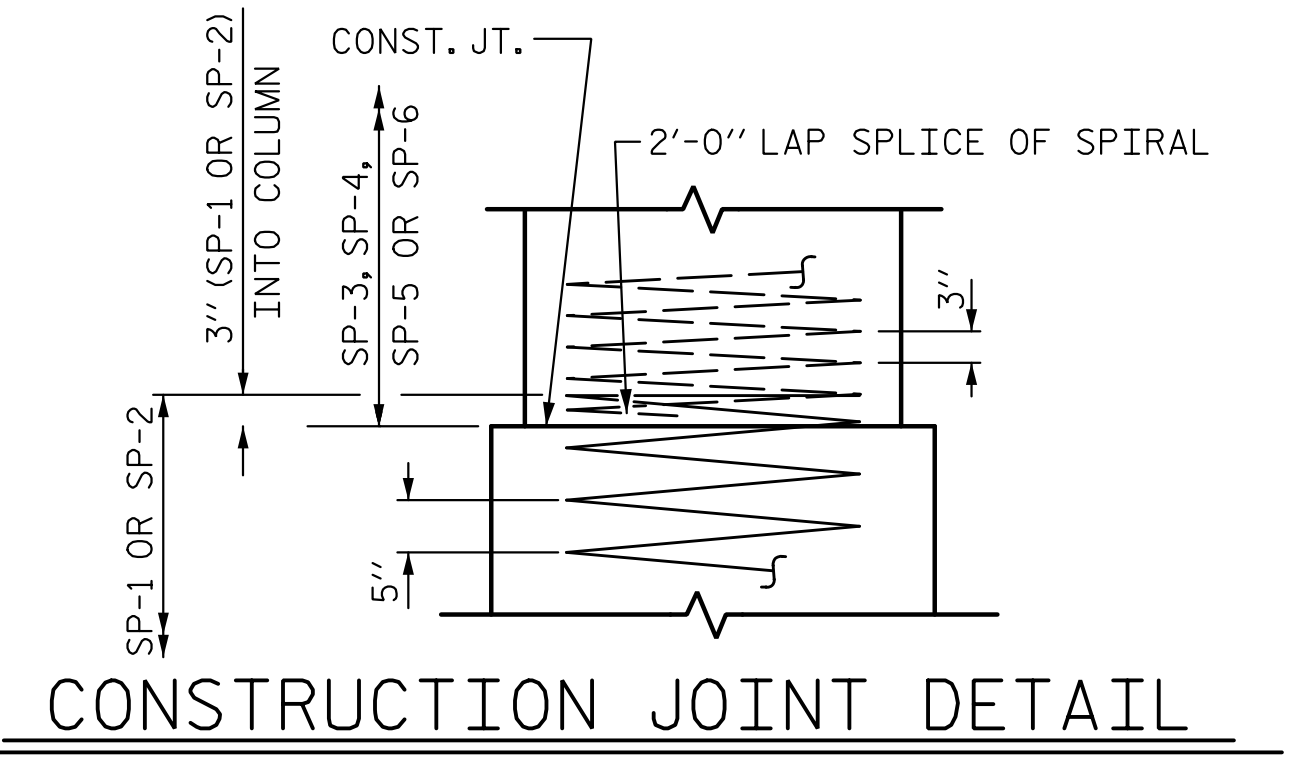
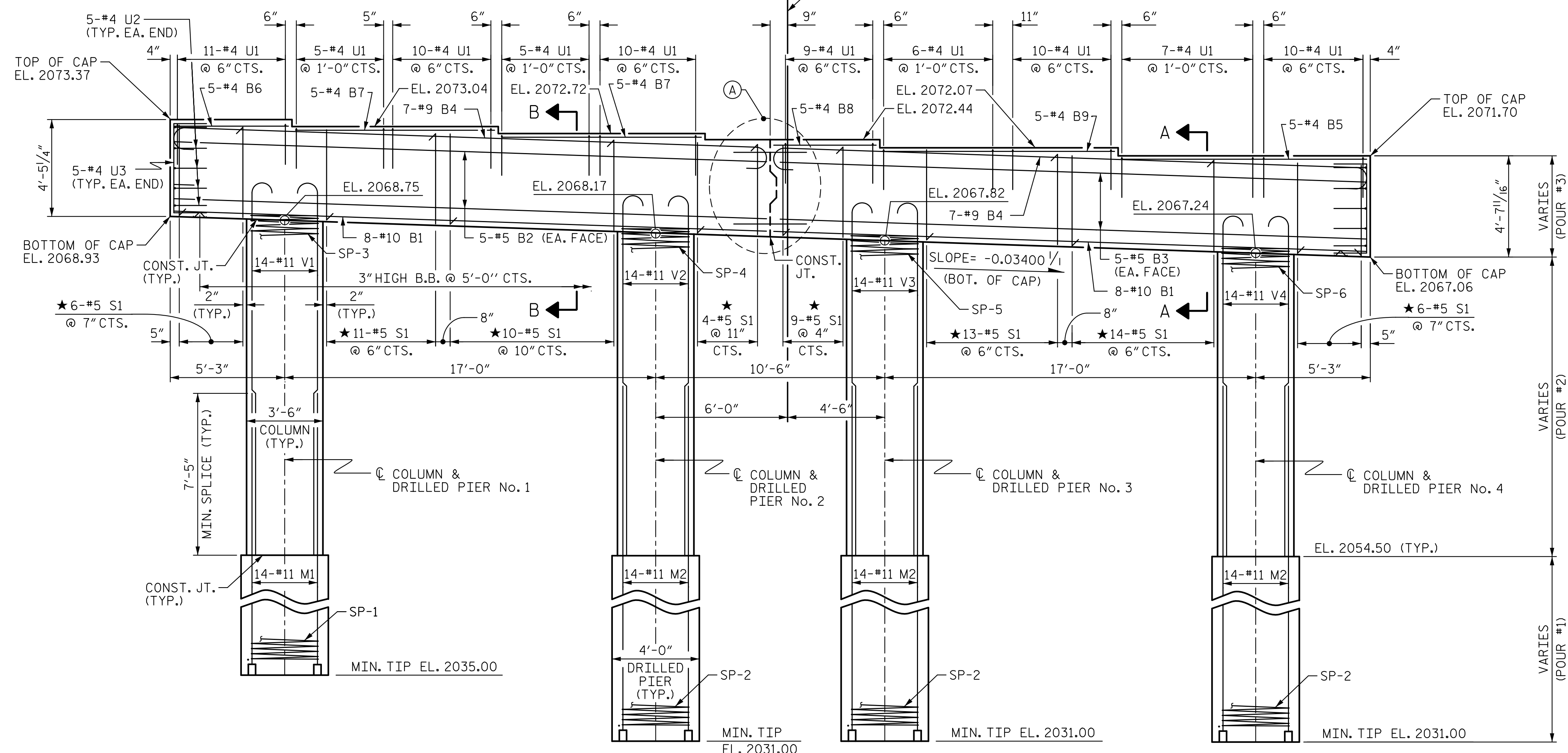
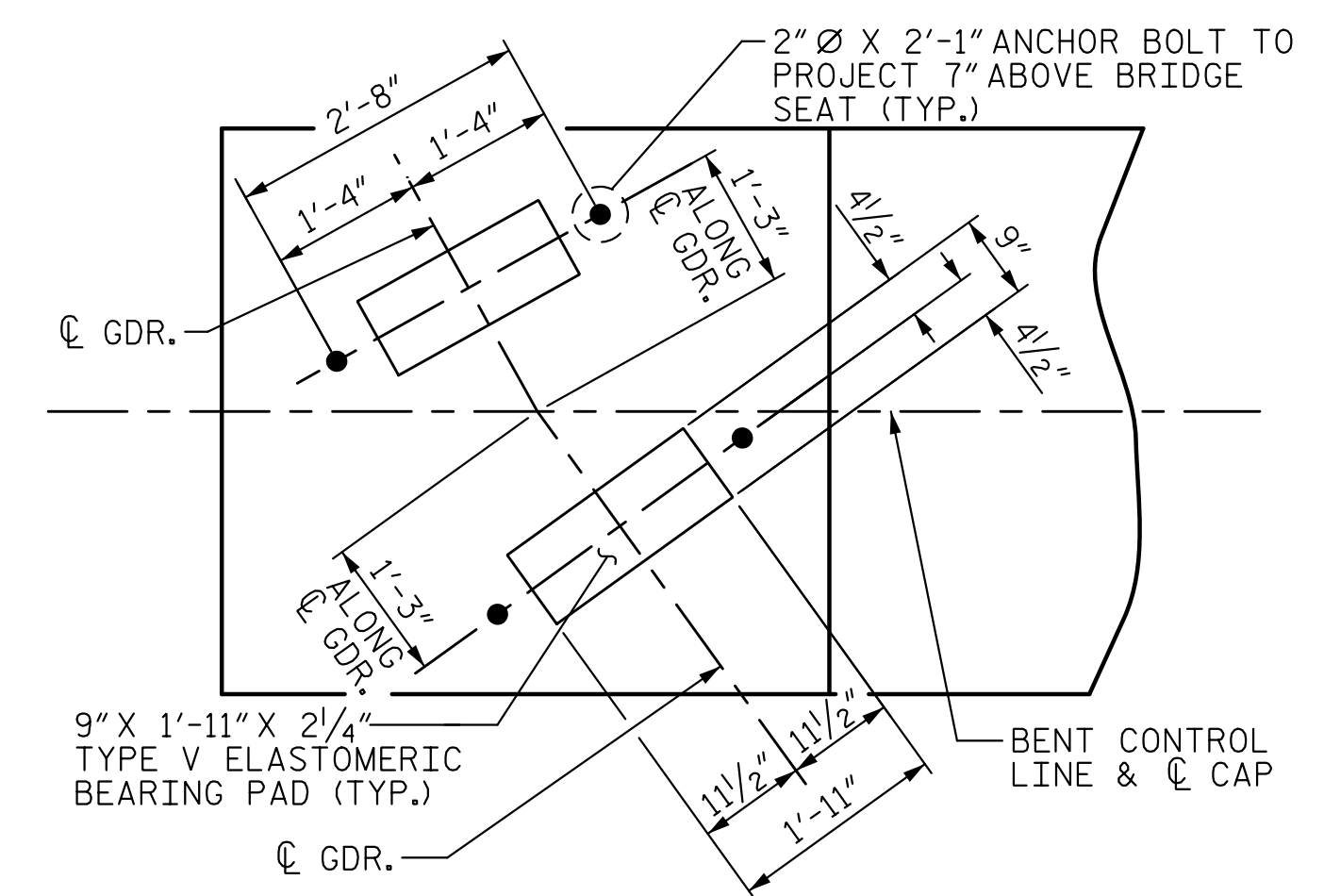
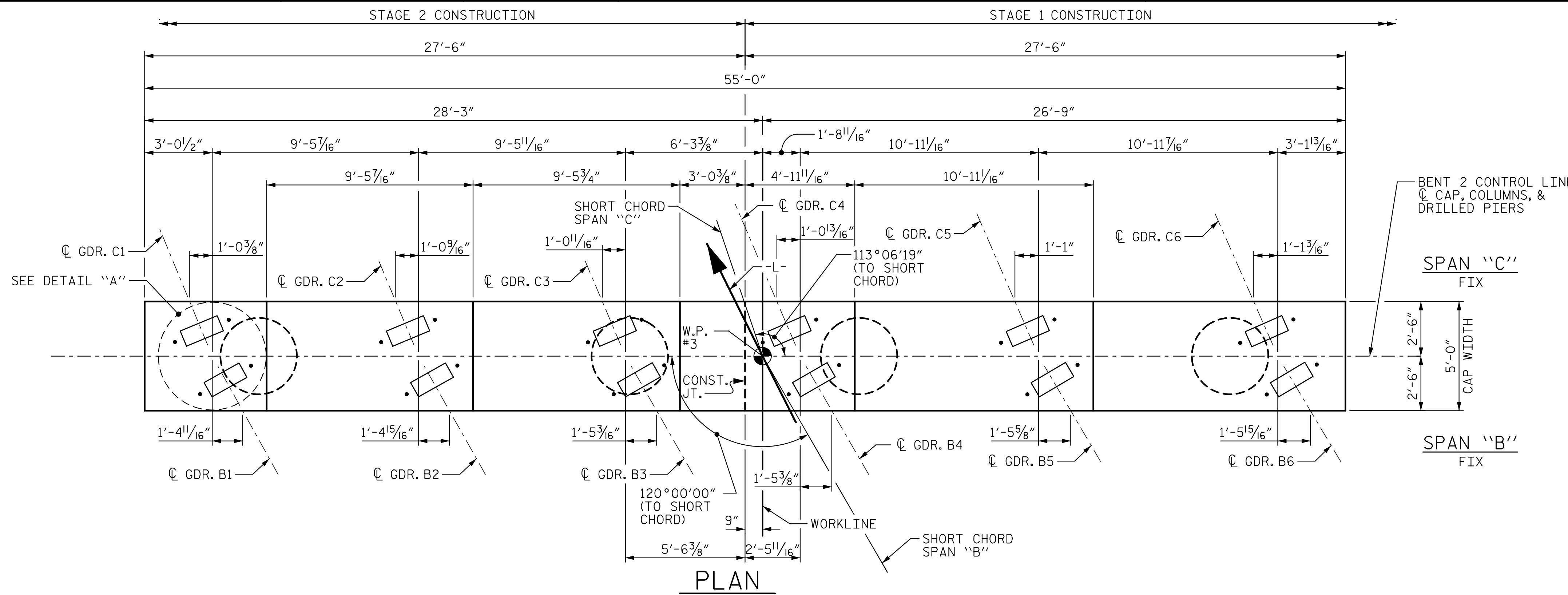
STIRRUPS AND "U" BARS IN CAP MAY BE SHIFTED AS NECESSARY TO CLEAR ANCHOR BOLTS.

FOR DRILLED PIERS, SEE SECTION 411 OF THE STANDARD SPECIFICATIONS.

DRILLED PIERS SHALL BE TERMINATED ONE FOOT ± ABOVE NORMAL WATER SURFACE ELEVATION FOR SHAFTS LOCATED IN WATER.

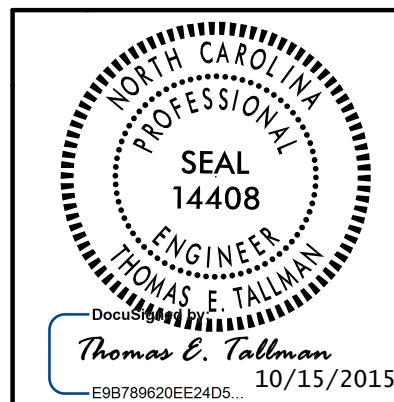
THE CONTRACTOR'S ATTENTION IS CALLED TO THE FACT THAT THE LONGITUDINAL REINFORCEMENT FOR DRILLED PIERS IS DETAILED WITH 3 FEET OF EXTRA LENGTH.

SEE SPECIAL PROVISIONS FOR APPLICATION OF BRIDGE COATING. SEE SHEET 2 OF 2 FOR LIMITS.



PROJECT NO. B-4159
 JACKSON COUNTY
 STATION: 20+16.00 -L-
 SHEET 1 OF 2

STATE OF NORTH CAROLINA
 DEPARTMENT OF TRANSPORTATION
 RALEIGH
 SUBSTRUCTURE
 BENT 2



REVISIONS						SHEET NO. S-51
NO.	BY:	DATE:	NO.	BY:	DATE:	
1			3			TOTAL SHEETS 64
2			4			



10/14/2015 10:51:01 AM C:\eng\tdallm\es1_b4159_sd_b2_01.dgn T.E. Tallman, Inc.

DRAWN BY: D. H. CARTER DATE: OCT 2015
 CHECKED BY: K. M. MOBLEY/T. E. TALLMAN DATE: OCT 2015
 DESIGN ENGINEER OF RECORD: T. E. TALLMAN DATE: OCT 2015

Ⓐ SEE "SHEAR KEY DETAIL" ON SHEET 2 OF 2

★ INVERT ALTERNATE STIRRUPS