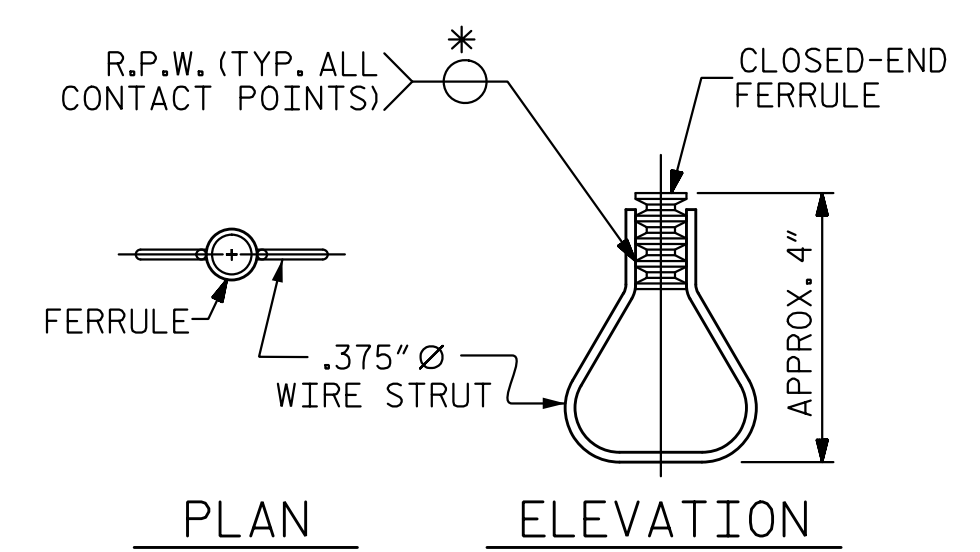
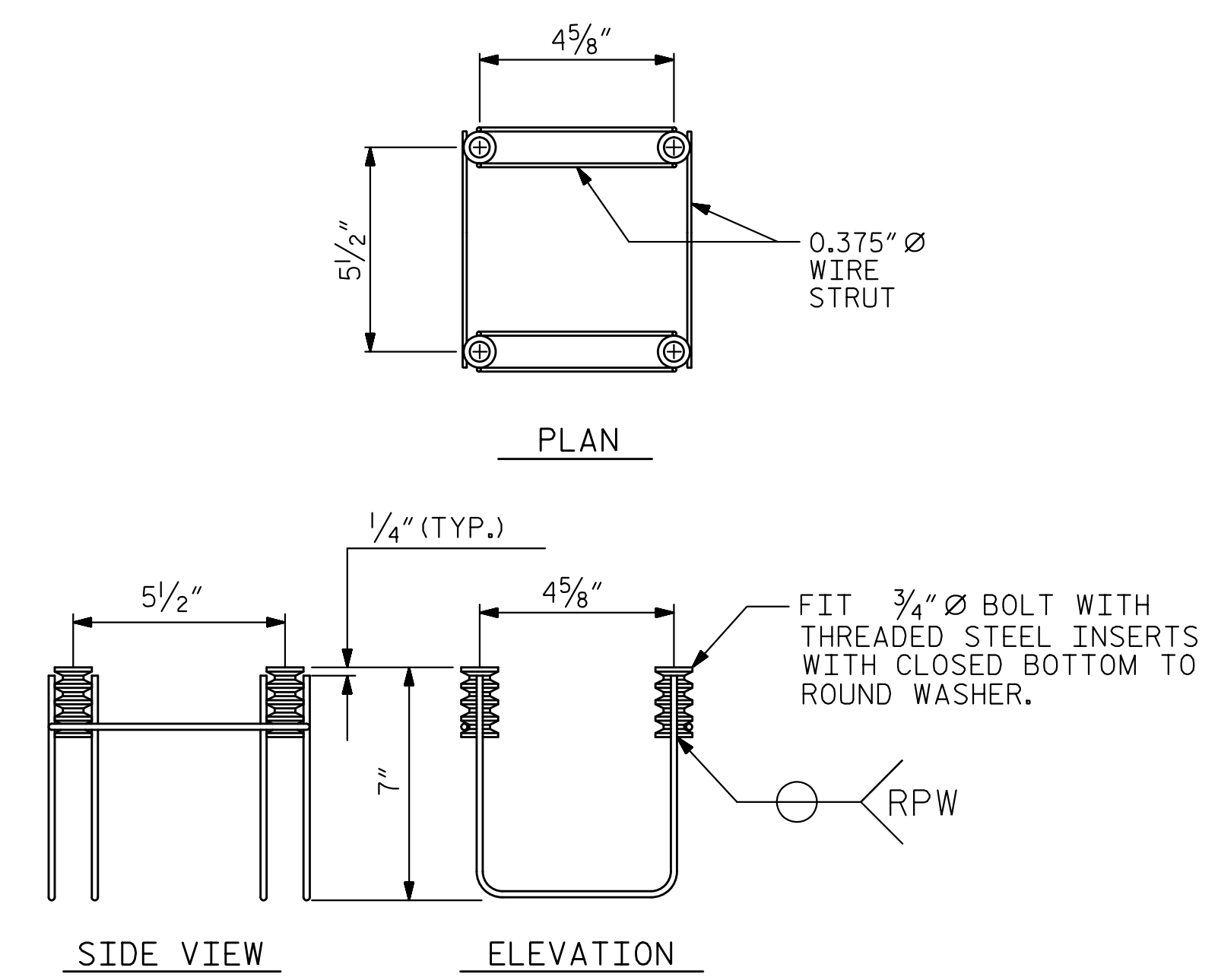


DETAILS FOR ATTACHING METAL RAIL TO END POST

NOTE:
FOR RAIL POST SPACINGS, SEE SHEET 5 OF 8



STRUCTURAL CONCRETE INSERT

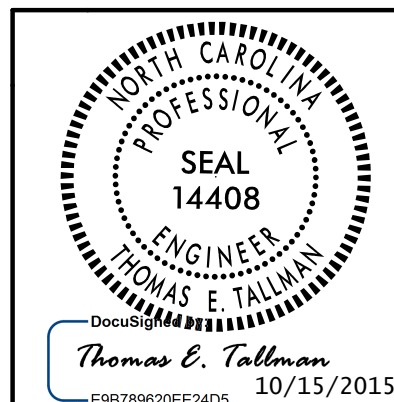
* EACH WELDED ATTACHMENT OF WIRE TO FERRULE SHALL DEVELOP THE TENSILE STRENGTH OF THE WIRE.

PROJECT NO. B-4159
JACKSON COUNTY
 STATION: 20+16.00 -L-

SHEET 3 OF 8

4-BOLT METAL RAIL ANCHOR ASSEMBLY

(55 ASSEMBLIES REQUIRED) (STAGE 1)
 (53 ASSEMBLIES REQUIRED) (STAGE 2)



STATE OF NORTH CAROLINA
 DEPARTMENT OF TRANSPORTATION
 RALEIGH
 STANDARD
 RAIL POST SPACINGS
 AND
 END OF RAIL DETAILS
 FOR ONE OR TWO BAR METAL RAILS

REVISIONS						SHEET NO.
NO.	BY:	DATE:	NO.	BY:	DATE:	S-35
1			3			TOTAL SHEETS
2			4			64

ASSEMBLED BY : D. H. CARTER	DATE : SEP 2015
CHECKED BY : M. NEITHEISEL	DATE : SEP 2015
DRAWN BY : FCJ 1/88	REV. 5/7/03 RWW/JTE
CHECKED BY : CRK 3/89	REV. 5/1/06 TLA/GM
	REV. 10/1/11 MAA/GM