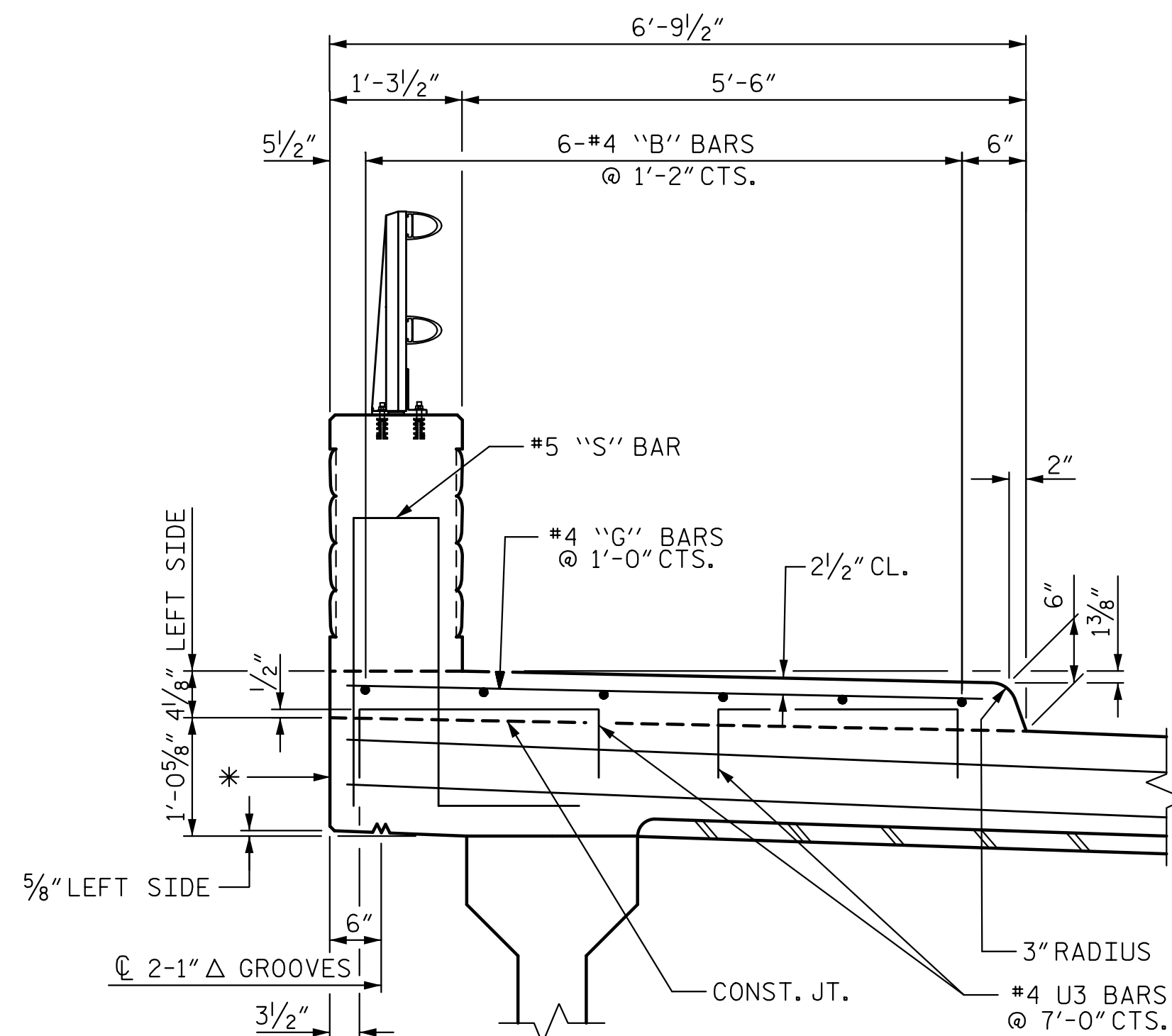


PLAN OF SIDEWALK

* RADIAL DIMENSION



SECTION A-A

NOTES FOR SIDEWALK

THE SIDEWALK ON A CONTINUOUS UNIT SHALL NOT BE CAST UNTIL ALL CONCRETE IN THE UNIT HAS BEEN CAST AND HAS REACHED A MINIMUM COMPRESSIVE STRENGTH OF 3,000 PSI.

ALL REINFORCING IN THE SIDEWALK, CONCRETE PARAPET AND END POSTS SHALL BE EPOXY COATED.

GROOVED CONTRACTION JOINT, 1/2" IN DEPTH, SHALL BE TOOLED IN ALL EXPOSED FACES OF THE SIDEWALK IN ACCORDANCE WITH ARTICLE 825-10(B) OF THE STANDARD SPECIFICATIONS. THE CONTRACTION JOINT SHALL BE LOCATED AT A SPACING OF 8FT. TO 10FT. BETWEEN EXPANSION JOINTS. NO CONTRACTION JOINTS WILL BE REQUIRED FOR SEGMENTS LESS THAN 10 FEET IN LENGTH.

FOR REINFORCING IN CONCRETE PARAPET, SEE "PLAN OF PARAPET" & "END OF RAIL DETAILS" SHEETS.

SIDEWALKS ON THE BRIDGE EXTENDING TO THE END OF THE APPROACH SLABS ARE INCLUDED IN THE SUPERSTRUCTURE BILL OF MATERIAL AND PAID FOR AS PART OF THE REINFORCED CONCRETE DECK PAY ITEM.

THE #4 U3 DOWELS MAY BE PUSHED INTO GREEN CONCRETE AFTER DECK OR APPROACH SLAB HAS BEEN SCREEDED OFF, EXCEPT AS NOTED.

PROJECT NO. B-4159

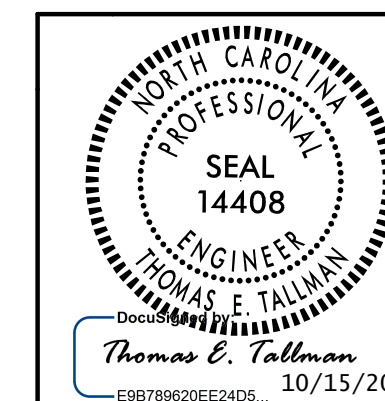
JACKSON COUNTY

STATION: 20+16.00 -L-

SHEET 2 OF 2

STATE OF NORTH CAROLINA
DEPARTMENT OF TRANSPORTATION
RALEIGH

SUPERSTRUCTURE
SIDEWALK DETAILS
STAGE 2



5121 Kingdom Way, Suite 100 Raleigh, NC 27607
NC License No. P-09298

REVISIONS						SHEET NO.
NO.	BY:	DATE:	NO.	BY:	DATE:	S-24
1			3			TOTAL SHEETS
2			4			64

10/14/2015 11:51:00 AM I:\eng\civil\24_B-4159_sd.sw_02.dgn ICA Engineering, Inc.

DRAWN BY : D. H. CARTER DATE : SEP 2015
 CHECKED BY : K. M. MOBLEY DATE : SEP 2015
 DESIGN ENGINEER OF RECORD: T. E. TALLMAN DATE : OCT 2015