
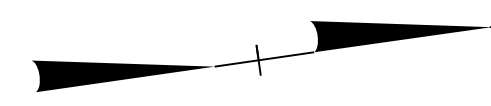


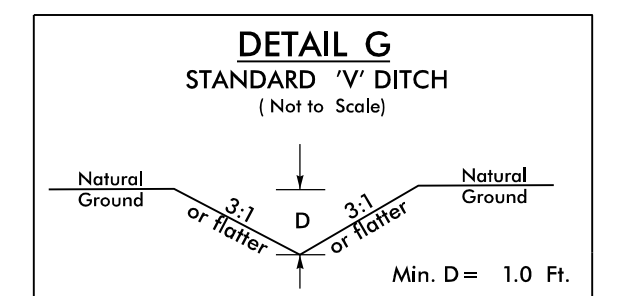
8/17/99  
 9/14/2015  
 R:\Projects\Bids\W-5519\_REU\_PSH43\_FINAL.dgn  
 localuser

PROJECT REFERENCE NO.	SHEET NO.
W-5519	EC-43CONST-19
RW SHEET NO.	19
	
1616 EAST MILLBROOK ROAD, SUITE 160 RALEIGH, NORTH CAROLINA 27609 (919) 781-4626 VOICE (919) 781-4869 FAX	

-L-  
 Pl Sta 306+78.49  
 $\Delta = 14^{\circ} 23' 27.9"$  (LT)  
 D = 3' 49' 11.0"  
 L = 376.76'  
 T = 189.38'  
 R = 1,500.00'

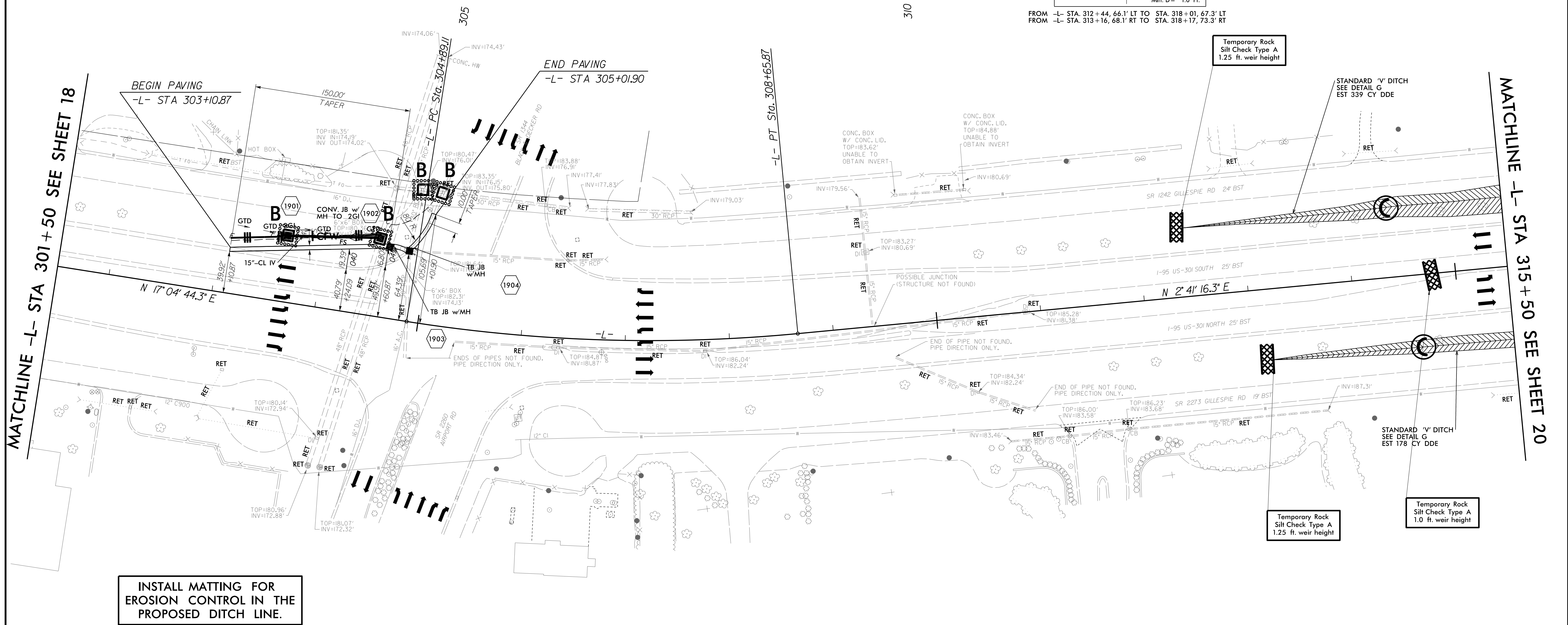


NOTE:  
 SILT FENCE AND COIR FIBER WATTLE BREAKS  
 SHALL BE INSTALLED AS DIRECTED BY ENGINEER.



FROM -L- STA. 312+44, 66.1' LT TO STA. 318+01, 67.3' LT  
 FROM -L- STA. 313+16, 68.1' RT TO STA. 318+17, 73.3' RT

315



INSTALL MATTING FOR  
 EROSION CONTROL IN THE  
 PROPOSED DITCH LINE.

For Slopes Excavated Greater Than 10 feet  
 Install Matting for Erosion Control on  
 Entire Slope as Work Allows.

B-9512