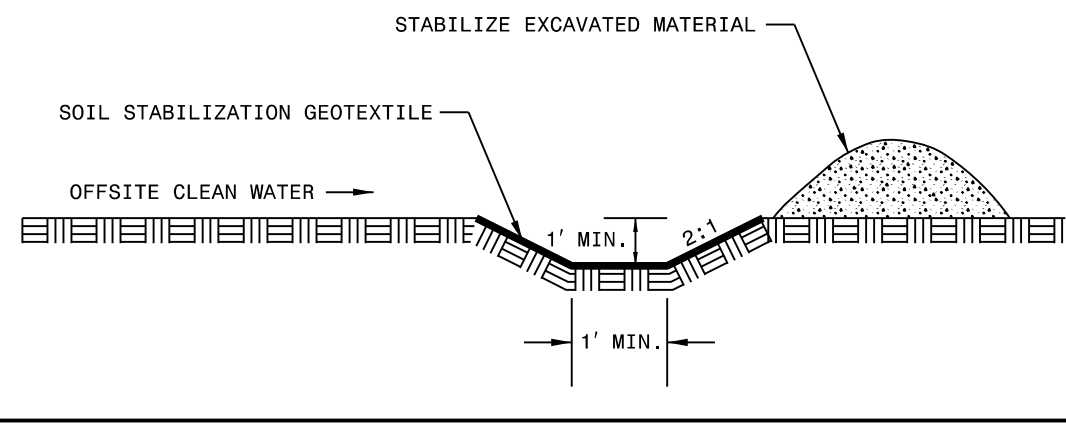


CLEAN WATER DIVERSION

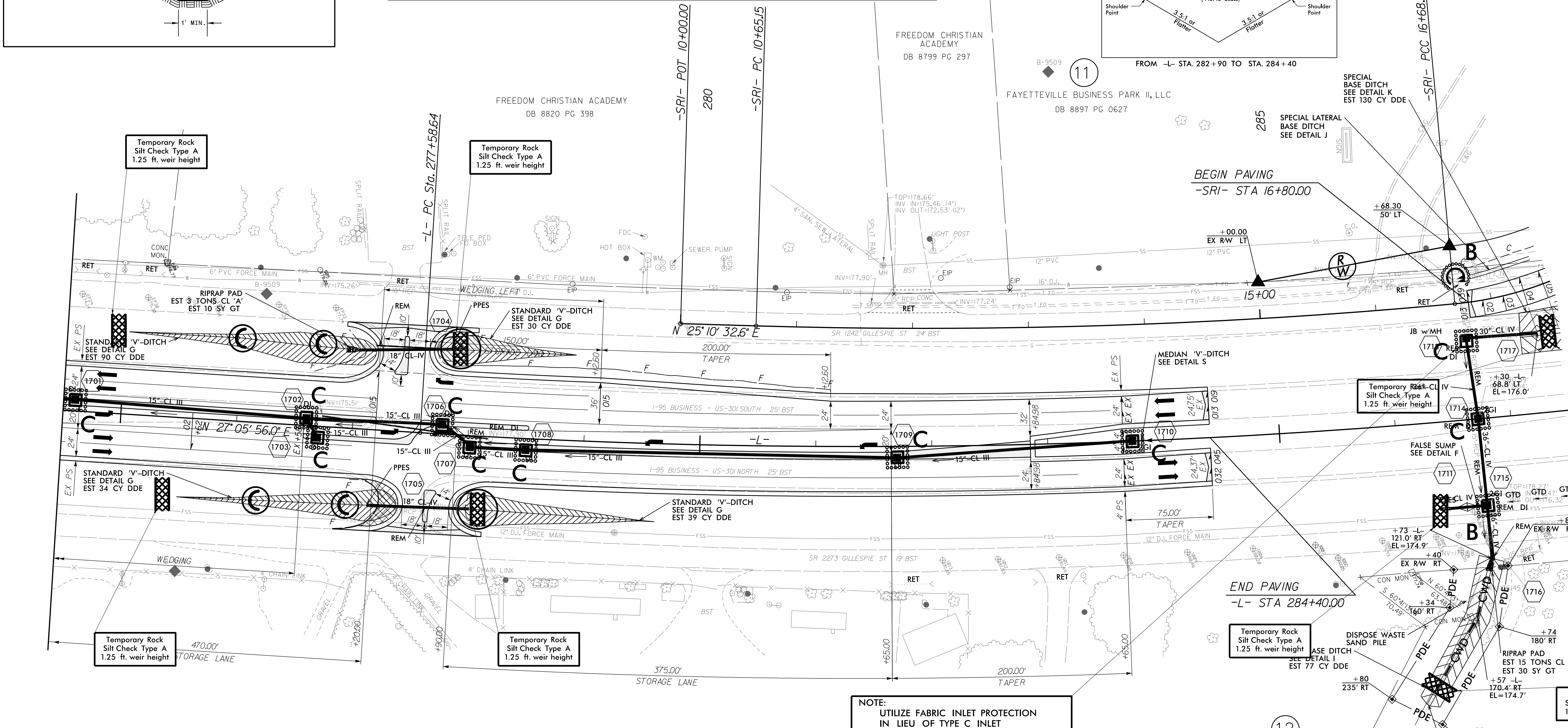
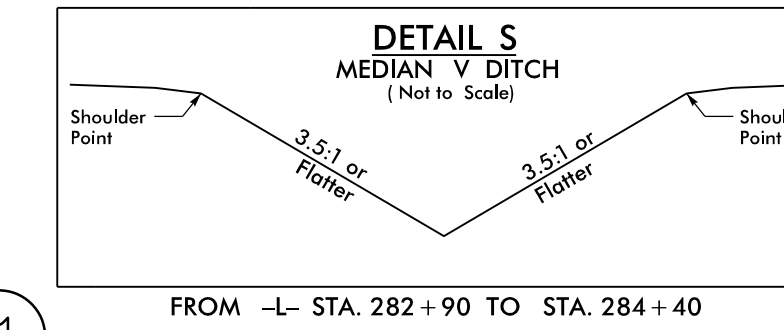
(Not to Scale)



CONSTRUCTION SEQUENCE:

- 1) BUILD PROPOSED STORMWATER NETWORK AT STA 286+40 -L-
2) REMOVE PAVEMENT AND CONSTRUCT DITCHES BASED ON DETAIL K; STABILIZE WITH MATTING
3) GRADE 25:1 SHOULDER PORTION OF DETAIL K TO FINAL ELEVATION FROM STA 287+30 TO 290+47 -L-
4) BUILD PROPOSED -SRI-

-SRI- PI Sta 18+17.92 D = 53' 00" 48.0' (LT)
-L- PI Sta 282+84.62 D = 10' 0" 11.8' (LT)
D = 19' 05" 54.9' L = 277.58'
T = 149.62' R = 300.00' DS = 30 mph
e = .06 RO = 109'



INSTALL MATTING FOR EROSION CONTROL IN THE PROPOSED DITCH LINE.

For Slopes Excavated Greater Than 10 feet Install Matting for Erosion Control on Entire Slope as Work Allows.

Place Matting for Erosion Control in Temporary Ditches and Diversions.

NOTE: SILT FENCE AND COIR FIBER WATTLE BREAKS SHALL BE INSTALLED AS DIRECTED BY ENGINEER.

NOTE: UTILIZE FABRIC INLET PROTECTION IN LIEU OF TYPE C INLET PROTECTION WHERE WATER MIGHT POND ON ROADWAY USED BY PUBLIC TRAFFIC

