

INSTALL MATTING FOR  
EROSION CONTROL IN THE  
PROPOSED DITCH LINE.

For Slopes Excavated Greater Than 10 feet  
Install Matting for Erosion Control on  
Entire Slope as Work Allows.

All Upgradient Areas Must be Stabilized  
and Infiltration and Dry Detention Basins Must be  
Cleaned Out and Returned to Design State  
Before Erosion Control Devices are Removed.

NOTE:  
SILT FENCE AND COIR FIBER WATTLE BREAKS  
SHALL BE INSTALLED AS DIRECTED BY ENGINEER.

-L-

$$PI\ Sta. 229+66.62$$

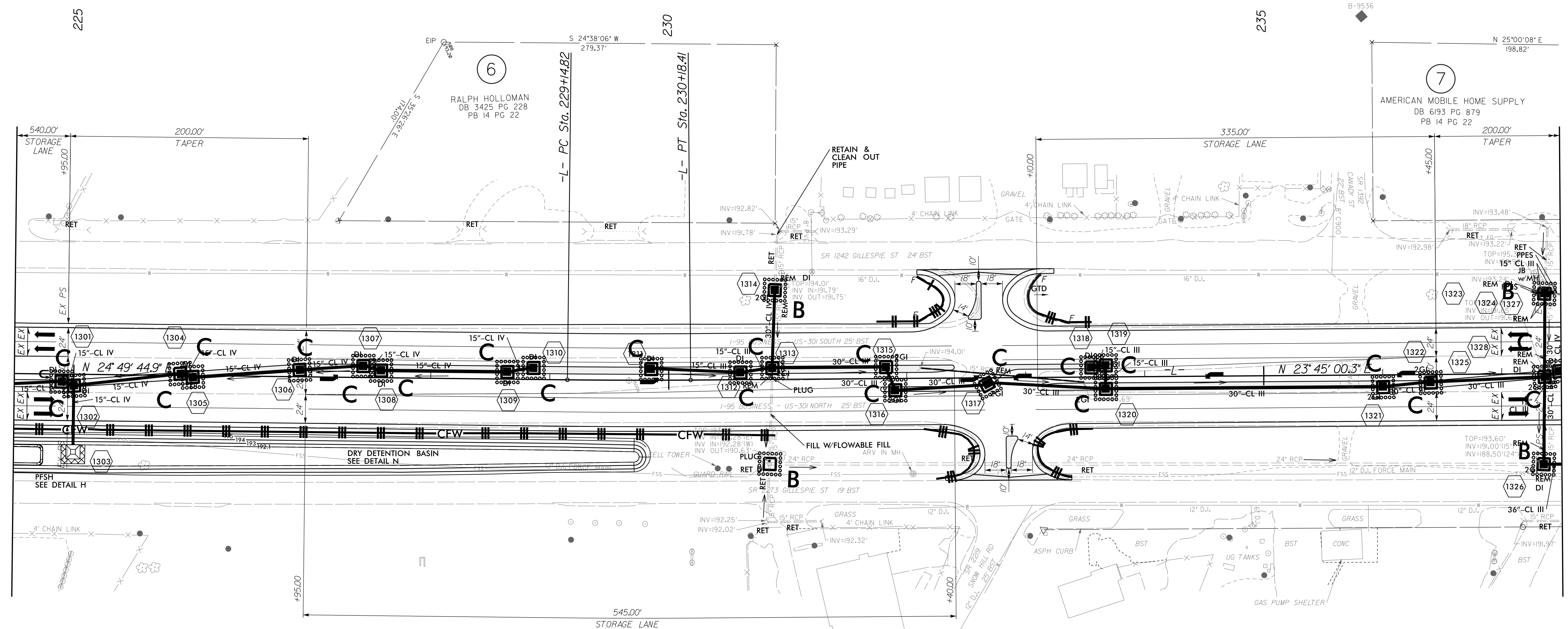
$$\Delta = 1^{\circ}04'44.6" (LT)$$

$$D = 1^{\circ}02'30.3"$$

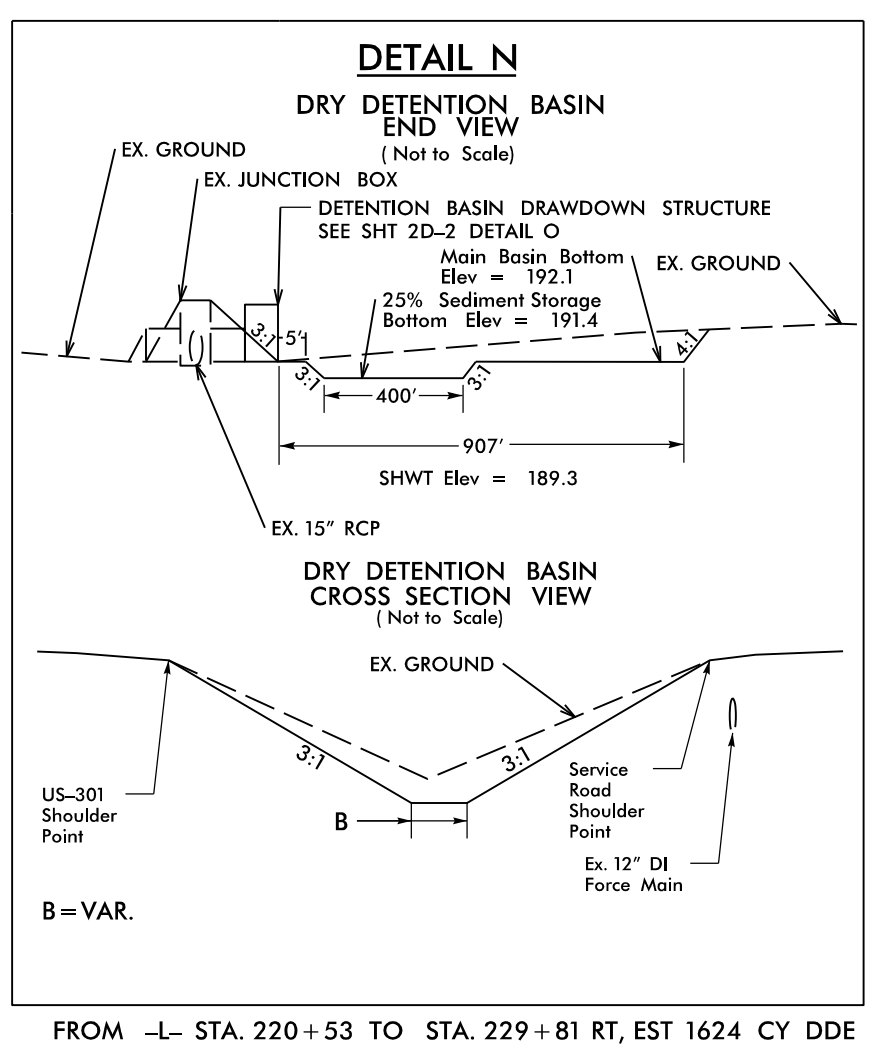
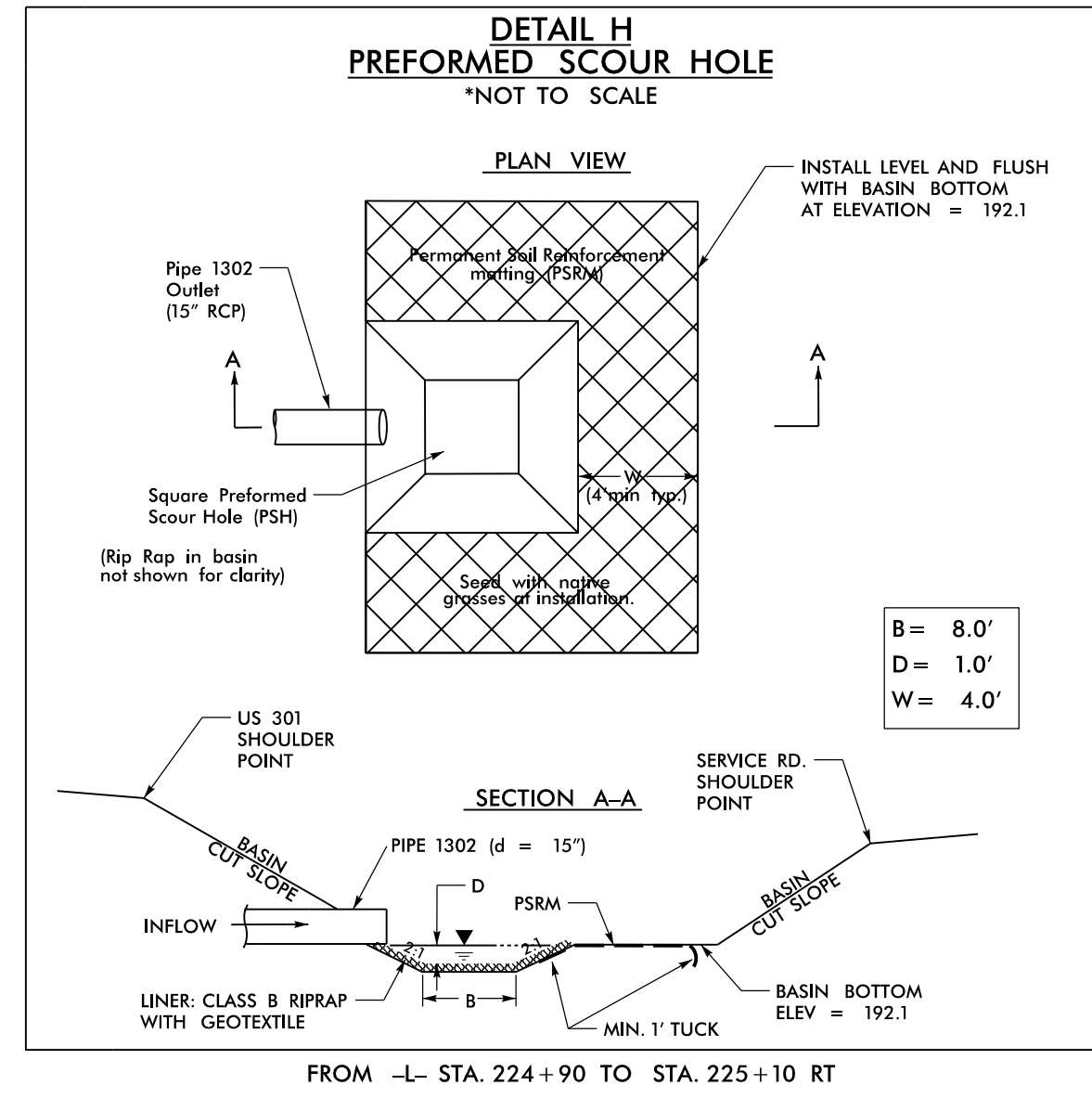
$$L = 103.58'$$

$$T = 51.79'$$

$$R = 5,500.00'$$



MATCHLINE -L- STA 237 + 50 SEE SHEET 14



8/17/99  
R:\14\2015\RA\Final\Bids\W-5519\_REL\_PSH37\_FINAL.dgn  
10/20/2015 10:00:00 AM