
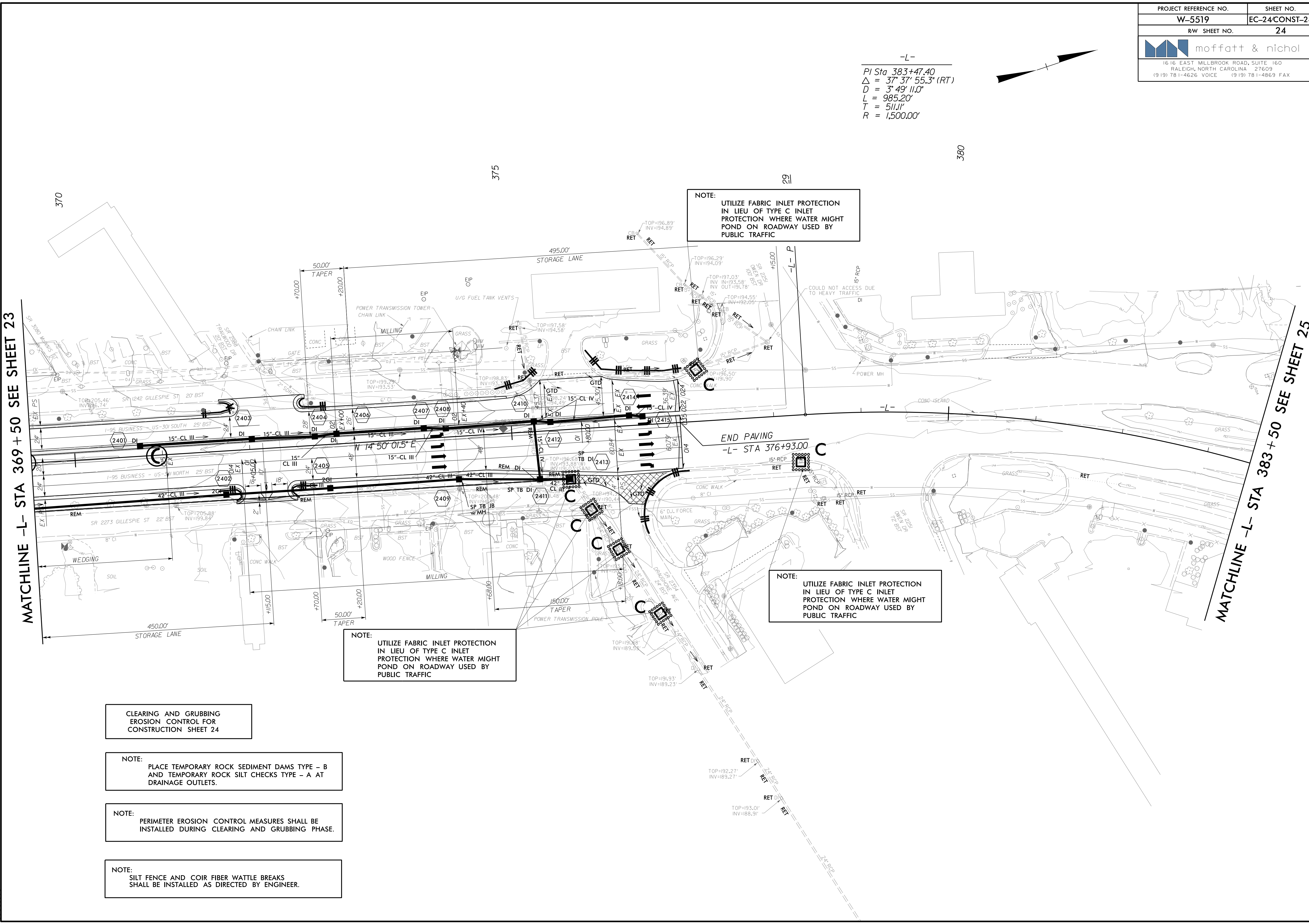
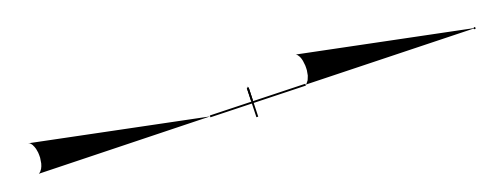


PROJECT REFERENCE NO.	SHEET NO.
W-5519	EC-24/CONST-24
RW SHEET NO.	24
	
1616 EAST MILLBROOK ROAD, SUITE 160 RALEIGH, NORTH CAROLINA 27609 (919) 781-4626 VOICE (919) 781-4869 FAX	

-L-
 PI Sta 383+47.40
 $\Delta = 37' 37" 55.3" (RT)$
 $D = 3' 49" 11.0"$
 $L = 985.20'$
 $T = 511.11'$
 $R = 1,500.00'$



NOTE:
 UTILIZE FABRIC INLET PROTECTION
 IN LIEU OF TYPE C INLET
 PROTECTION WHERE WATER MIGHT
 POND ON ROADWAY USED BY
 PUBLIC TRAFFIC

NOTE:
 UTILIZE FABRIC INLET PROTECTION
 IN LIEU OF TYPE C INLET
 PROTECTION WHERE WATER MIGHT
 POND ON ROADWAY USED BY
 PUBLIC TRAFFIC

NOTE:
 UTILIZE FABRIC INLET PROTECTION
 IN LIEU OF TYPE C INLET
 PROTECTION WHERE WATER MIGHT
 POND ON ROADWAY USED BY
 PUBLIC TRAFFIC

CLEARING AND GRUBBING
 EROSION CONTROL FOR
 CONSTRUCTION SHEET 24

NOTE:
 PLACE TEMPORARY ROCK SEDIMENT DAMS TYPE - B
 AND TEMPORARY ROCK SILT CHECKS TYPE - A AT
 DRAINAGE OUTLETS.

NOTE:
 PERIMETER EROSION CONTROL MEASURES SHALL BE
 INSTALLED DURING CLEARING AND GRUBBING PHASE.

NOTE:
 SILT FENCE AND COIR FIBER WATTLE BREAKS
 SHALL BE INSTALLED AS DIRECTED BY ENGINEER.

MATCHLINE -L- STA 369 +50 SEE SHEET 23

MATCHLINE -L- STA 383 +50 SEE SHEET 25

8/17/99

9/4/2015
 R:\Roads\de W-5519_REL\PSH24_C.C.dgn
 Local User