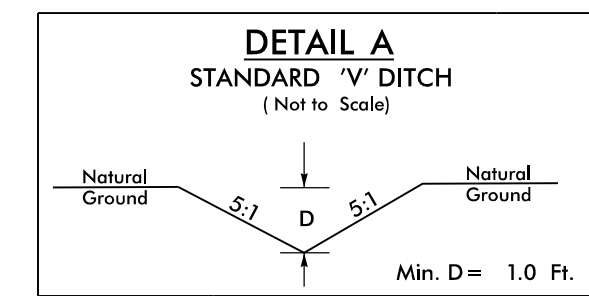


CLEARING AND GRUBBING
EROSION CONTROL FOR
CONSTRUCTION SHEET 4

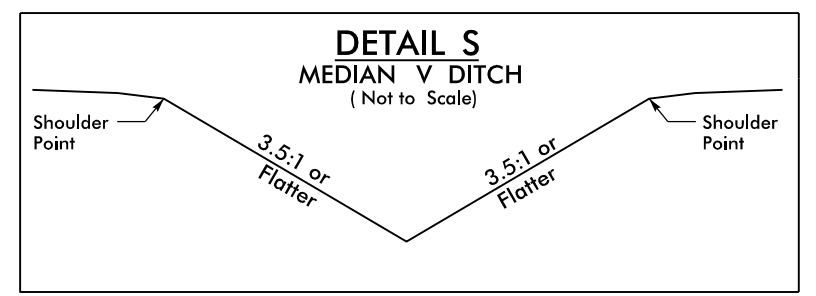
NOTE:
PLACE TEMPORARY ROCK SEDIMENT DAMS TYPE - B
AND TEMPORARY ROCK SILT CHECKS TYPE - A AT
DRAINAGE OUTLETS.

NOTE:
PERIMETER EROSION CONTROL MEASURES SHALL BE
INSTALLED DURING CLEARING AND GRUBBING PHASE.

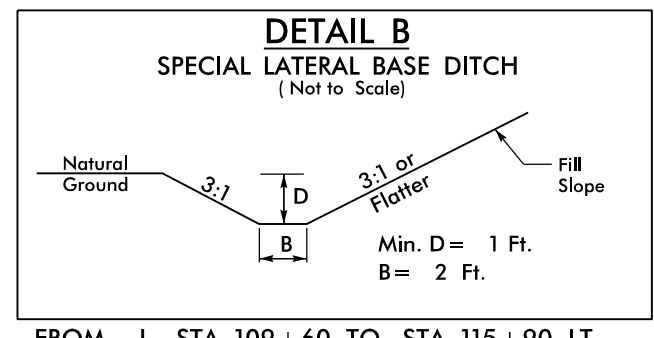
NOTE:
SILT FENCE AND COIR FIBER WATTLE BREAKS
SHALL BE INSTALLED AS DIRECTED BY ENGINEER.



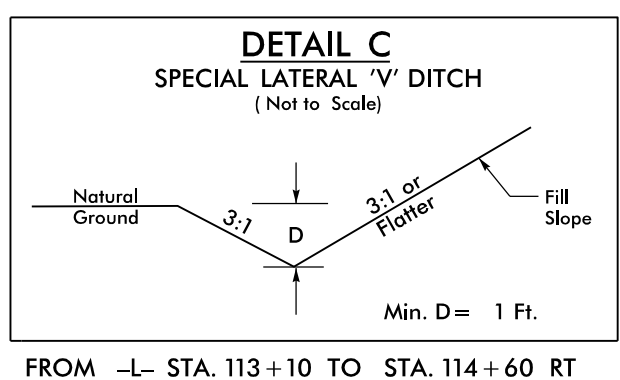
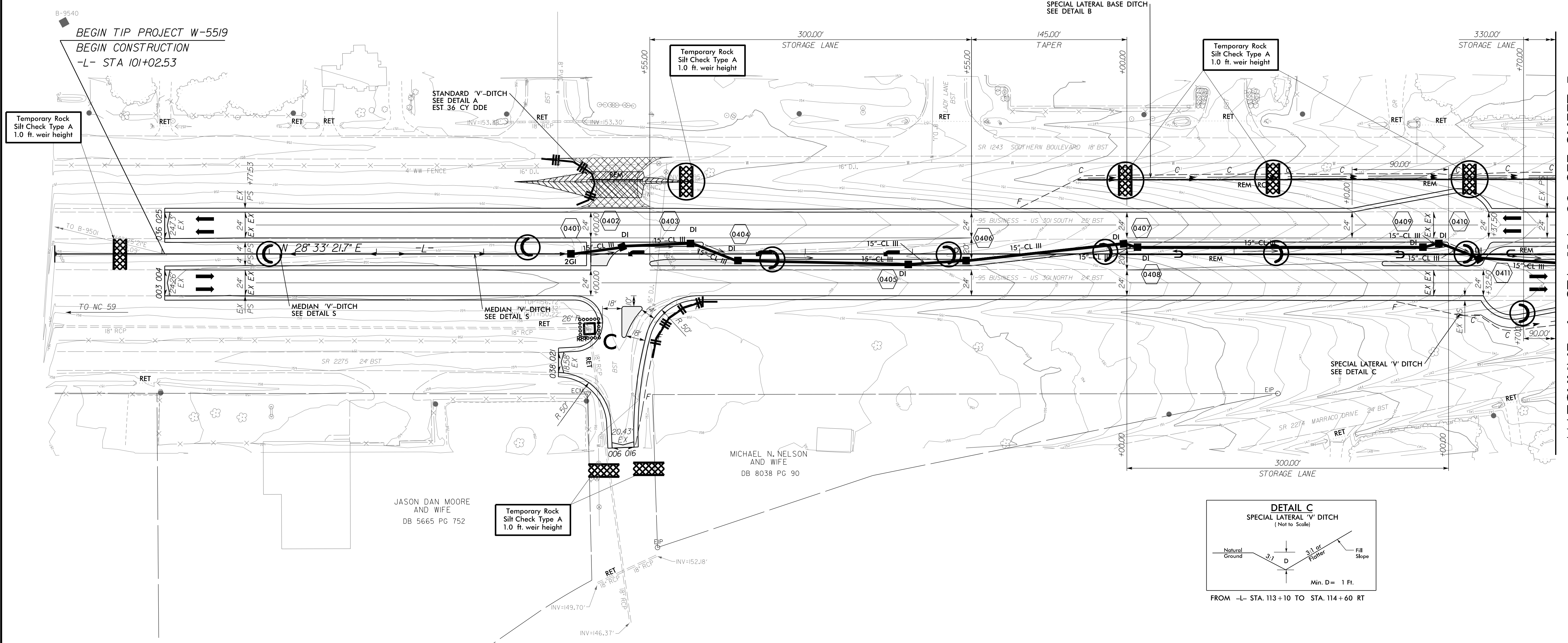
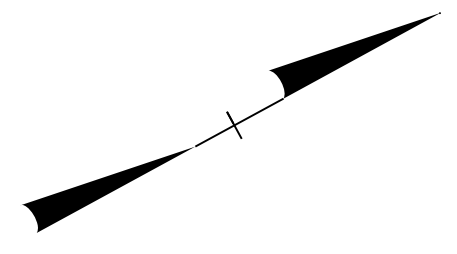
FROM -L- STA. 104+29, 67.4' LT TO STA. 105+96, 67.4' LT



FROM -L- STA. 102+10 TO STA. 104+80



FROM -L- STA. 109+60 TO STA. 115+90 LT



FROM -L- STA. 113+10 TO STA. 114+60 RT

DATUM DESCRIPTION
 THE LOCALIZED COORDINATE SYSTEM DEVELOPED FOR THIS PROJECT
 IS BASED ON THE STATE PLANE COORDINATES ESTABLISHED BY
 NCGS FOR MONUMENT "B-9501"
 WITH NAD 83/NA 2011 STATE PLANE GRID COORDINATES OF
 NORTHING: 435297.993(ft) EASTING: 2020411.296(ft)
 ELEVATION: 169.30(ft)
 THE AVERAGE COMBINED GRID FACTOR USED ON THIS PROJECT
 (GROUND TO GRID) IS: 0.99987968
 THE N.C. LAMBERT GRID BEARING AND
 LOCALIZED HORIZONTAL GROUND DISTANCE FROM

FOR DITCH DETAILS SEE SHEET 2-
 FOR DIRECTIONAL CROSSOVER AND MEDIAN U-TURN
 DETAILS SEE SHEETS 2-C THRU 2-F

MATCHLINE -L- STA 114+00 SEE SHEET 5

8/17/99
9/4/2015
R:\Roads\de W-5519_REL\PSH4_CG.dgn
Local User