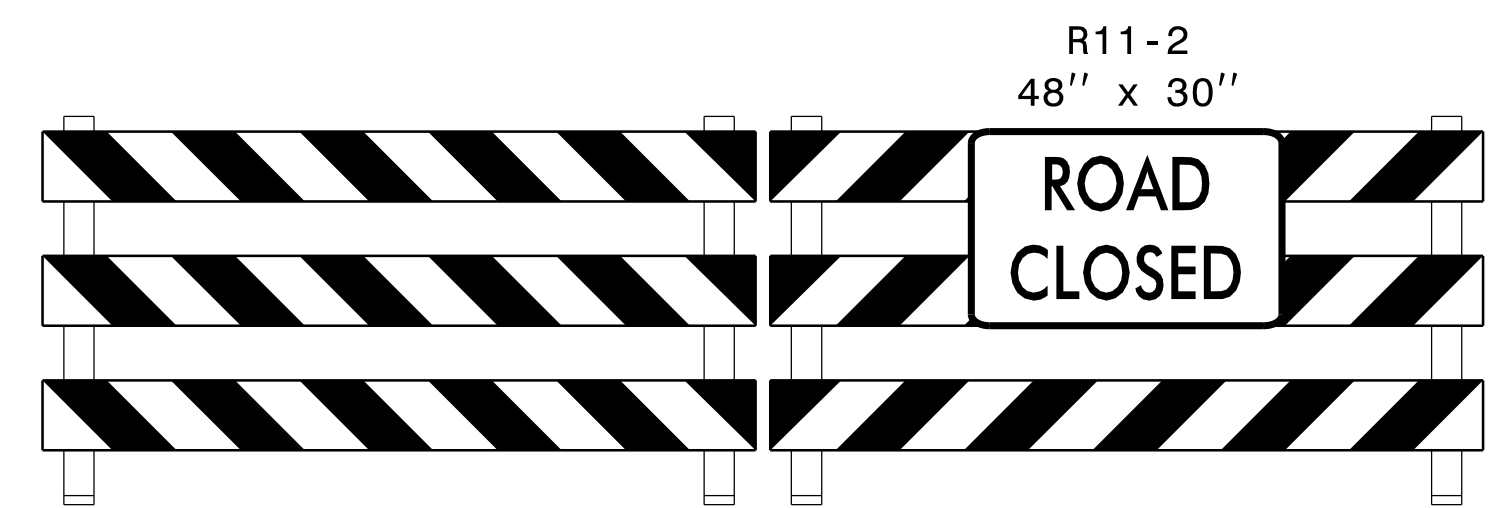
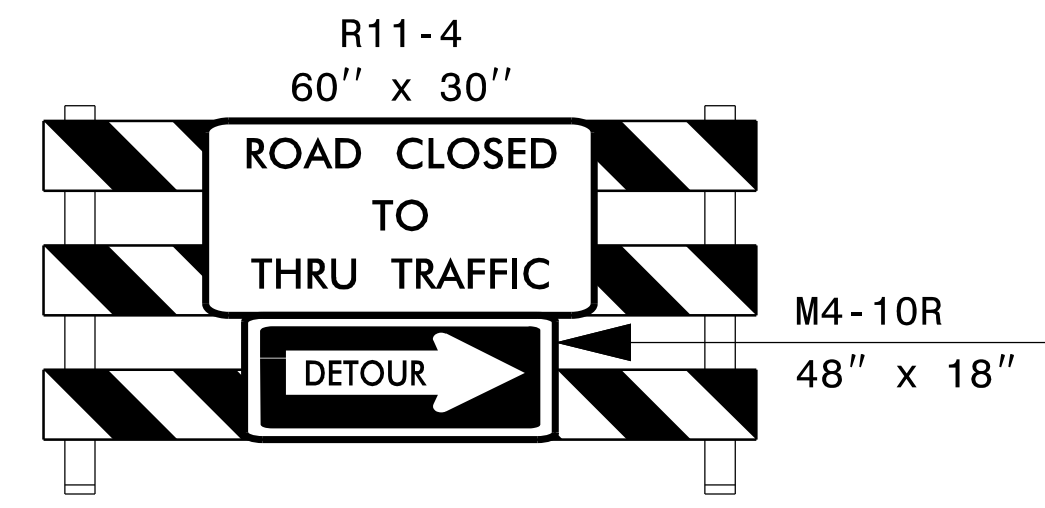


SEE ROADWAY STD. 1101.03 FOR
 ADDITIONAL ADVANCE WARNING SIGNS.
 SEE TMP-3 PHASE 2D FOR DETOUR PHASING INFORMATION.
 SEE TMP-23 AND TMP-24 FOR SEWER LINE INSTALLATION
 DURING ROAD CLOSURE.

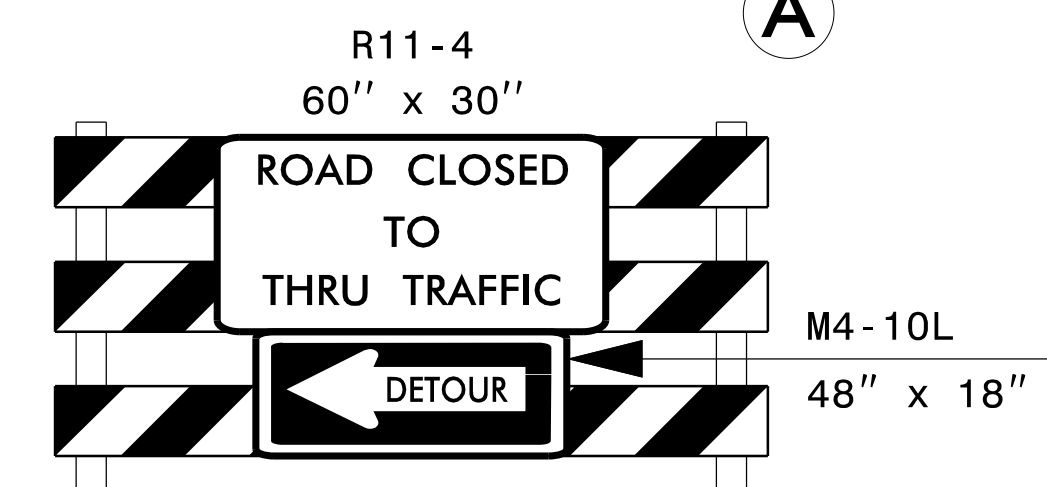
DO NOT SIMULTANEOUSLY CLOSE NORTHBOUND AND
 SOUTHBOUND LANES OF -L- I-95 BUSINESSUS 301.



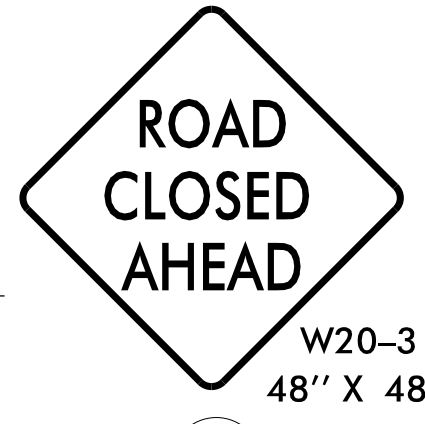
TYPE III BARRICADE(S)



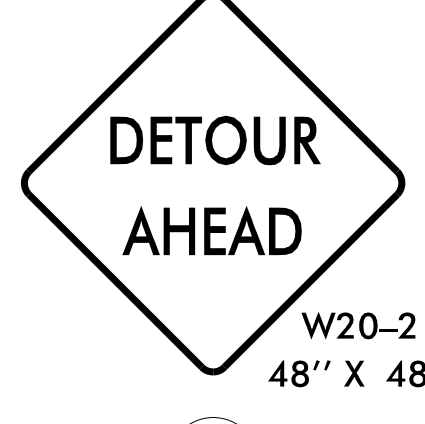
TYPE III BARRICADE



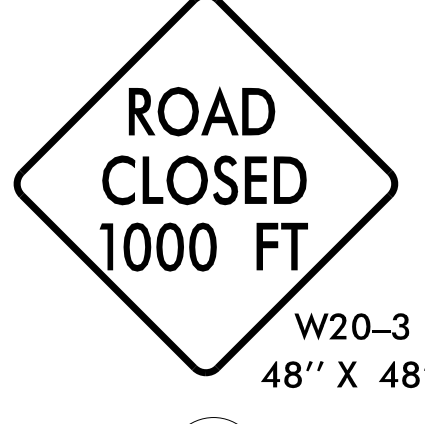
TYPE III BARRICADE



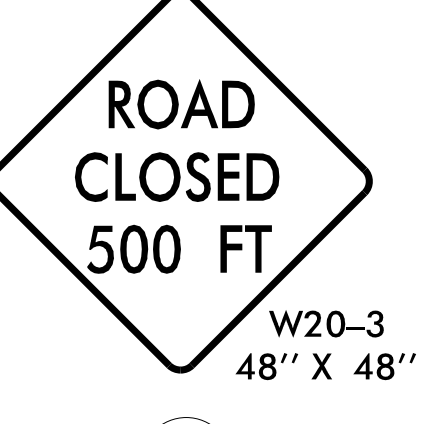
D



E

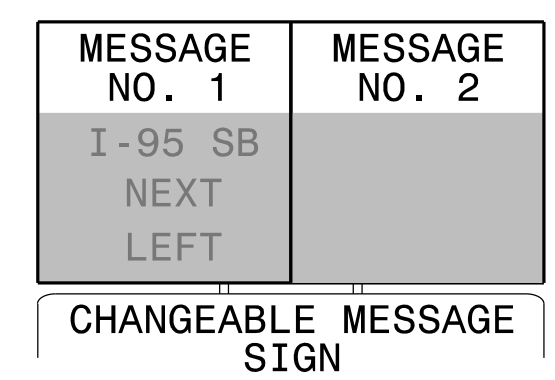


F

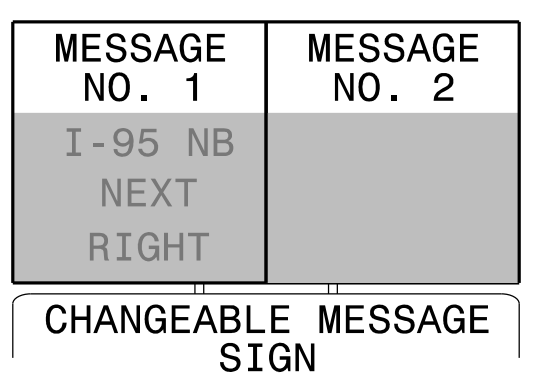


G

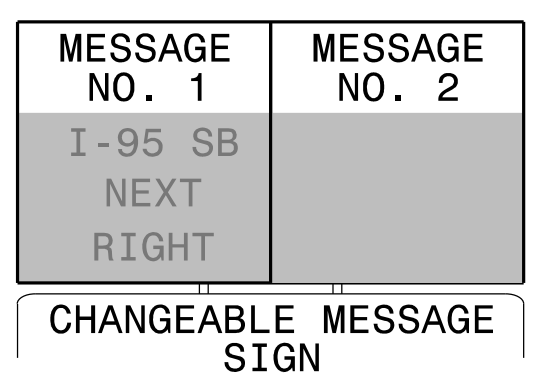
SHORT TERM CMS



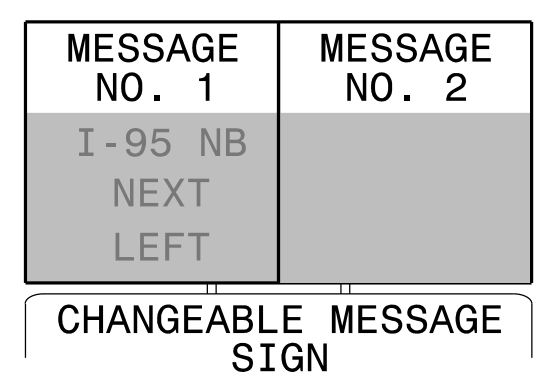
H



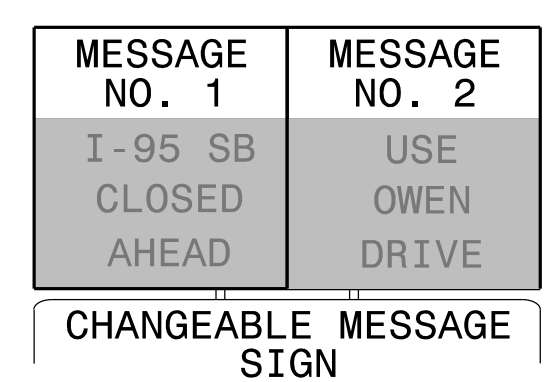
I



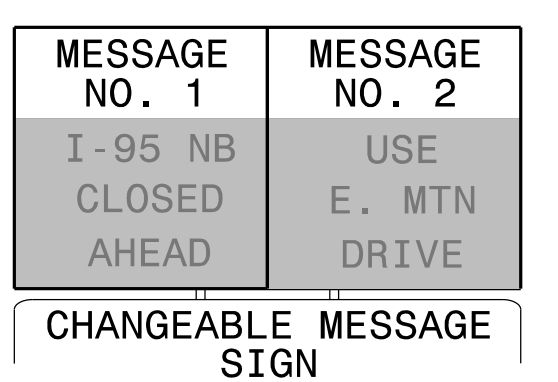
J



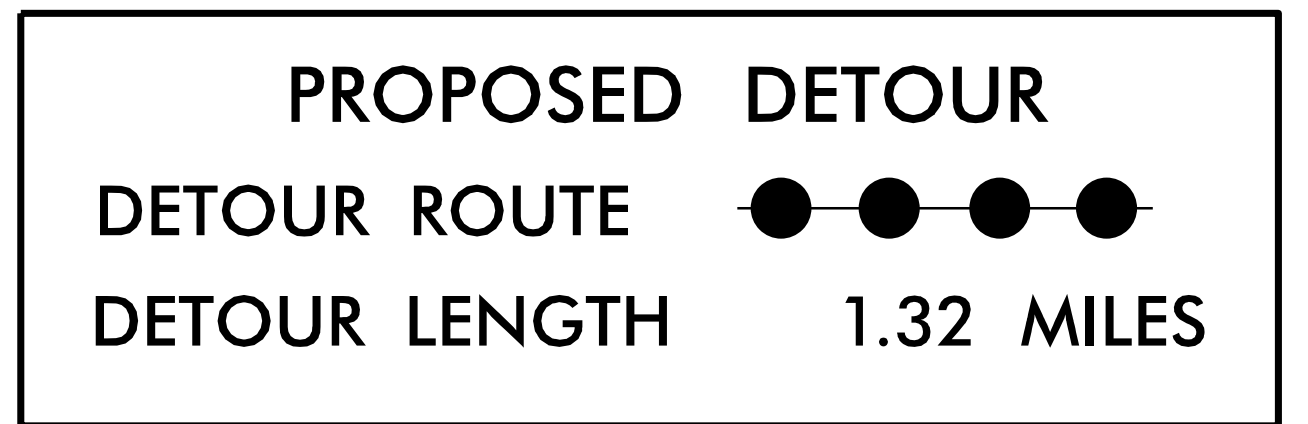
K



L



M



APPROVED:	DocuSigned by:	DATE: 11/10/2013
DETOUR SIGNING		
SCALE: 1"=50'	Prepared For:	REVISIONS
DATE:		
DEVELOPED BY: DAJ		
REVIEWED BY: MAD		
RKA PROJ. #: 14071		