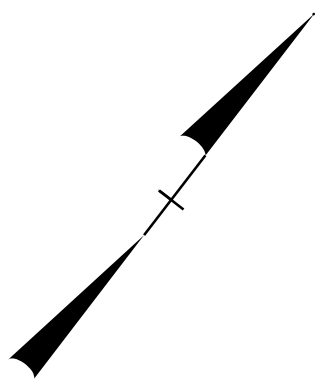


SECTION 9 386+00 +/- TO 423+98 +/-

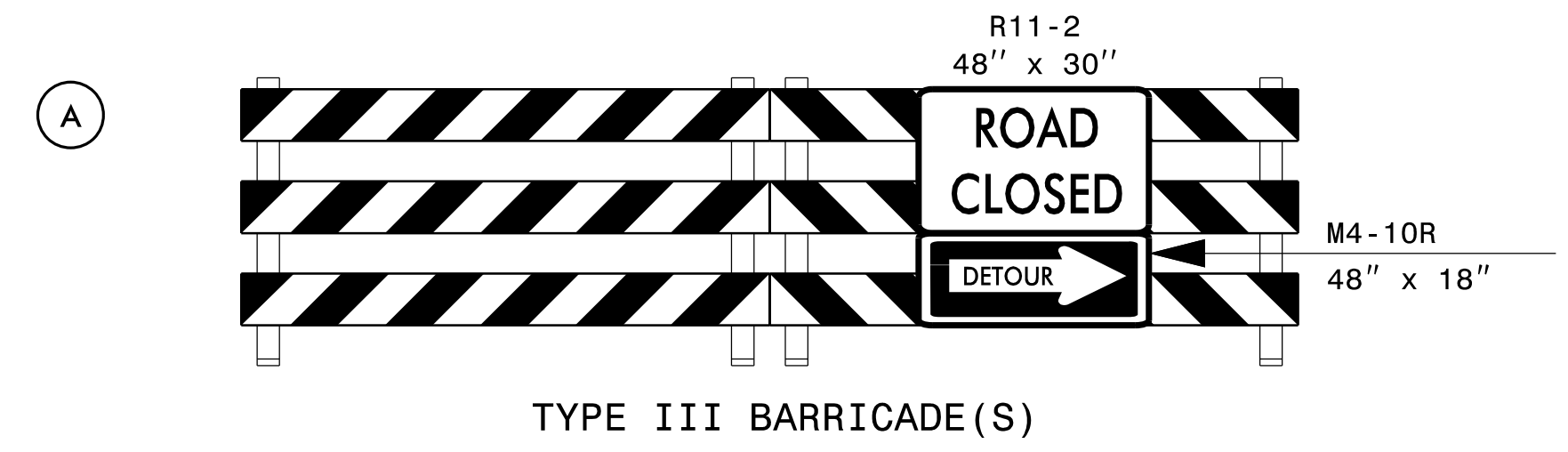
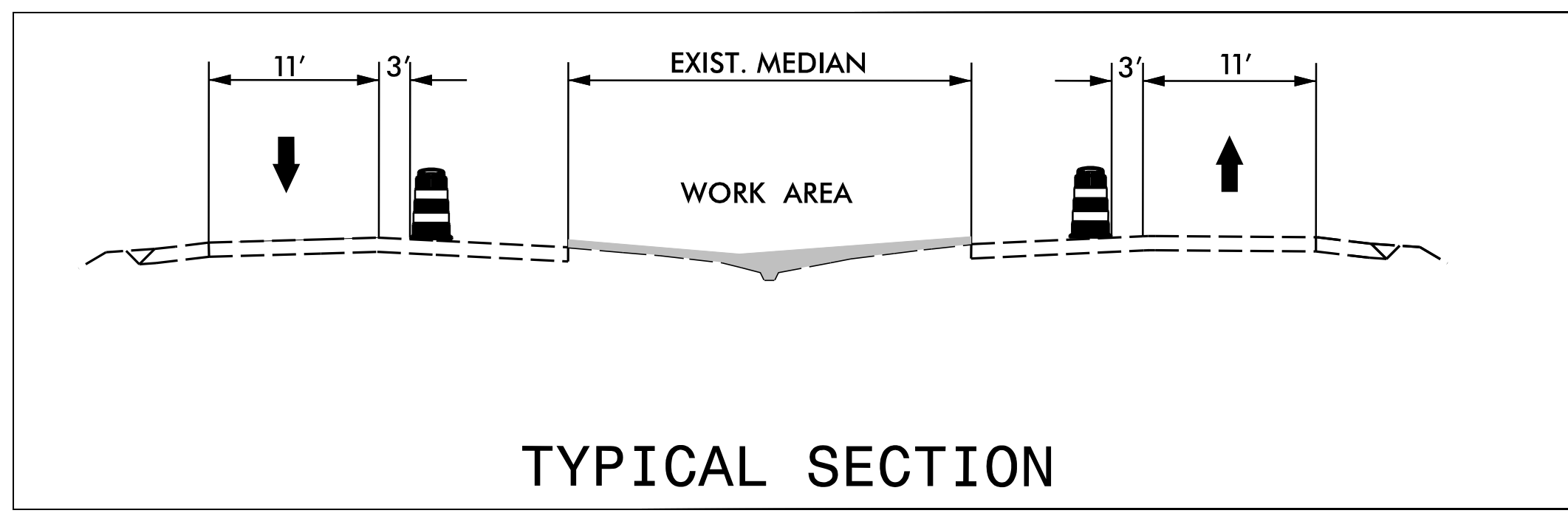
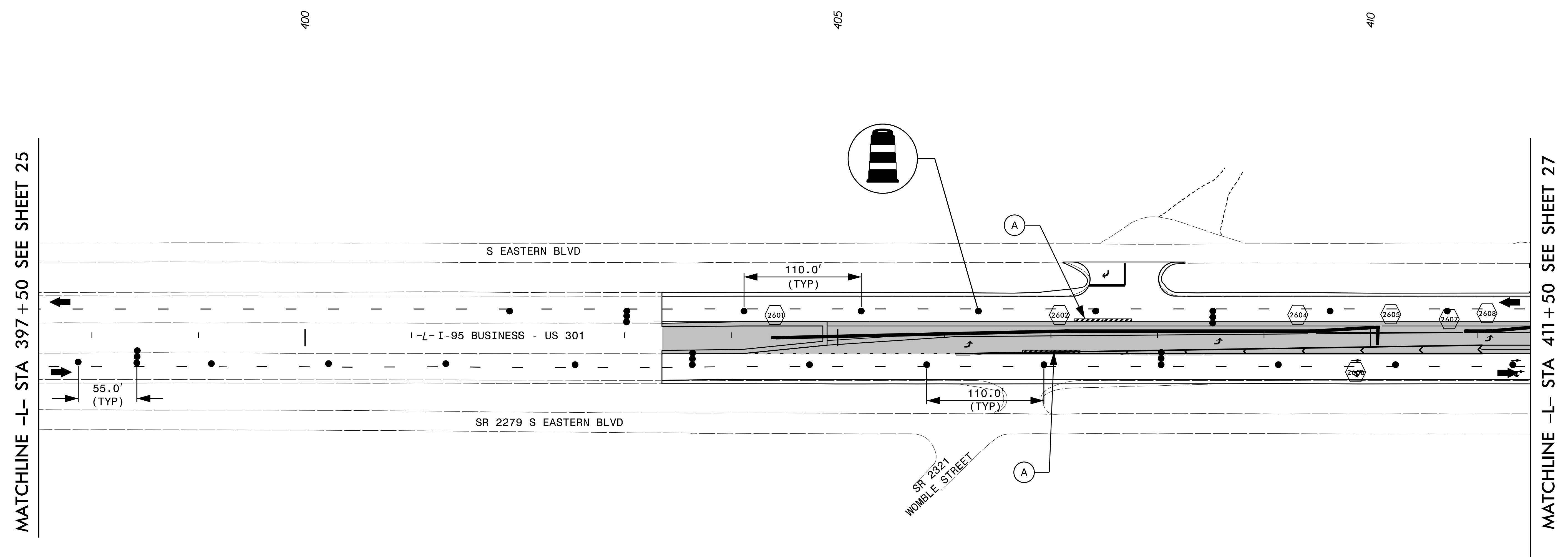
PROJ. REFERENCE NO.	SHEET NO.
W-5519	TMP-26

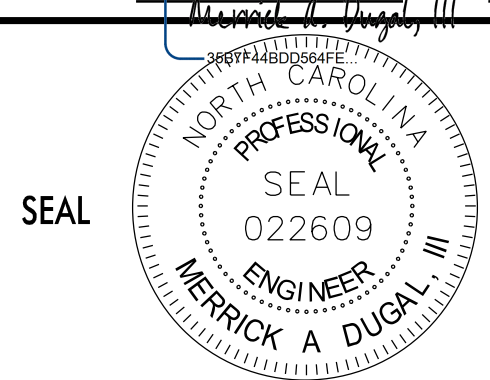

**RAMEY KEMP ASSOCIATES, INC.**  
 Transportation Engineers  
 5808 Farington Place, Suite 100  
 Raleigh, North Carolina 27609  
 919-872-5115 Tel. 919-878-5416 Fax.  
 www.rameykemp.com  
 NC License No. C-9910



CONSTRUCTION

NOTE: MAINTAIN ACCESS TO NEARBY CROSSOVER WITHIN 1 MILE OF WORK AREA AT ALL TIMES.



APPROVED: 	DATE: 9/9/2015	<b>PHASE II</b>	
SCALE: 1"=50'	DEVELOPED BY: DAJ		
REVIEWED BY: MAD	PREPARED FOR: 		
RKA PROJ. #: 14071			