



PROJ. REFERENCE NO.	SHEET NO.
W-5519	TMP-25

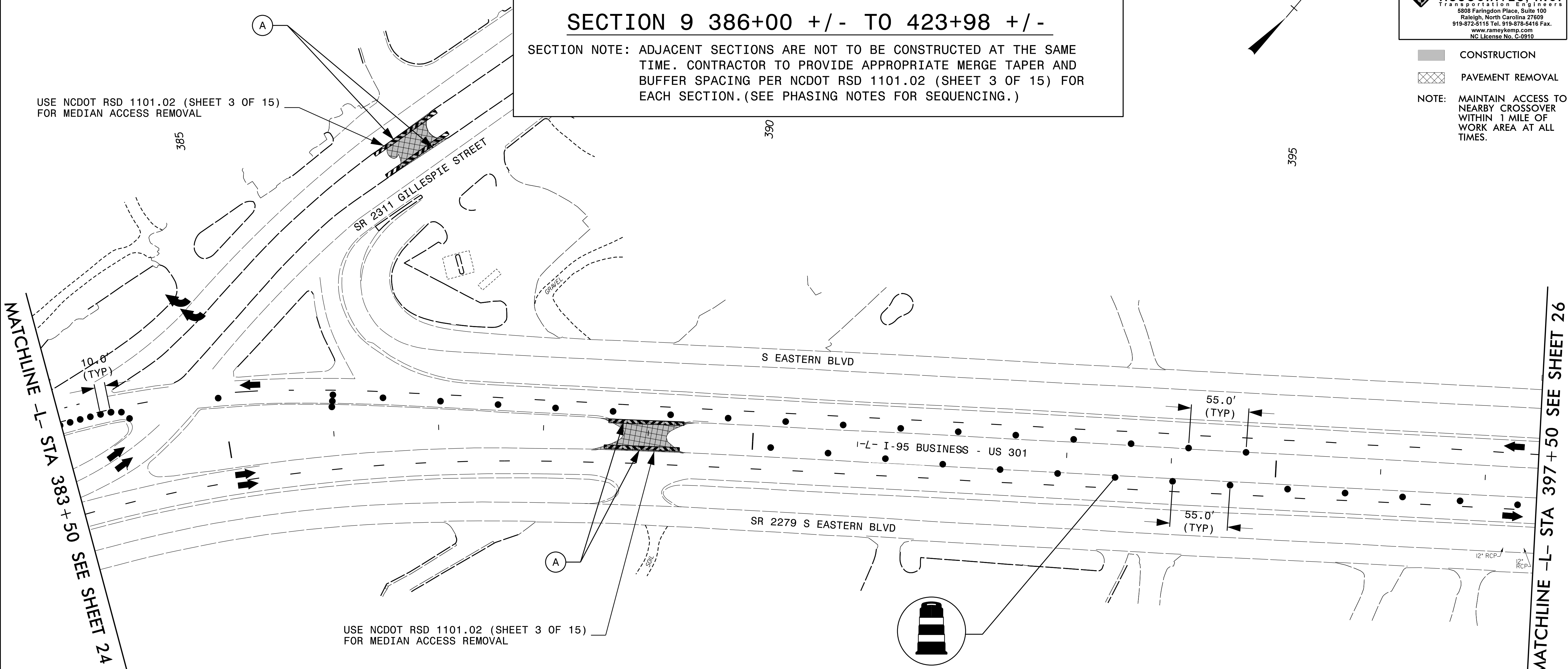
**RAMEY KEMP ASSOCIATES, INC.**  
 Transportation Engineers  
 5808 Faringdon Place, Suite 100  
 Raleigh, North Carolina 27609  
 919-872-5115 Tel. 919-878-5416 Fax.  
 www.rameykemp.com  
 NC License No. C-0910

-  CONSTRUCTION
  -  PAVEMENT REMOVAL
- NOTE: MAINTAIN ACCESS TO NEARBY CROSSOVER WITHIN 1 MILE OF WORK AREA AT ALL TIMES.

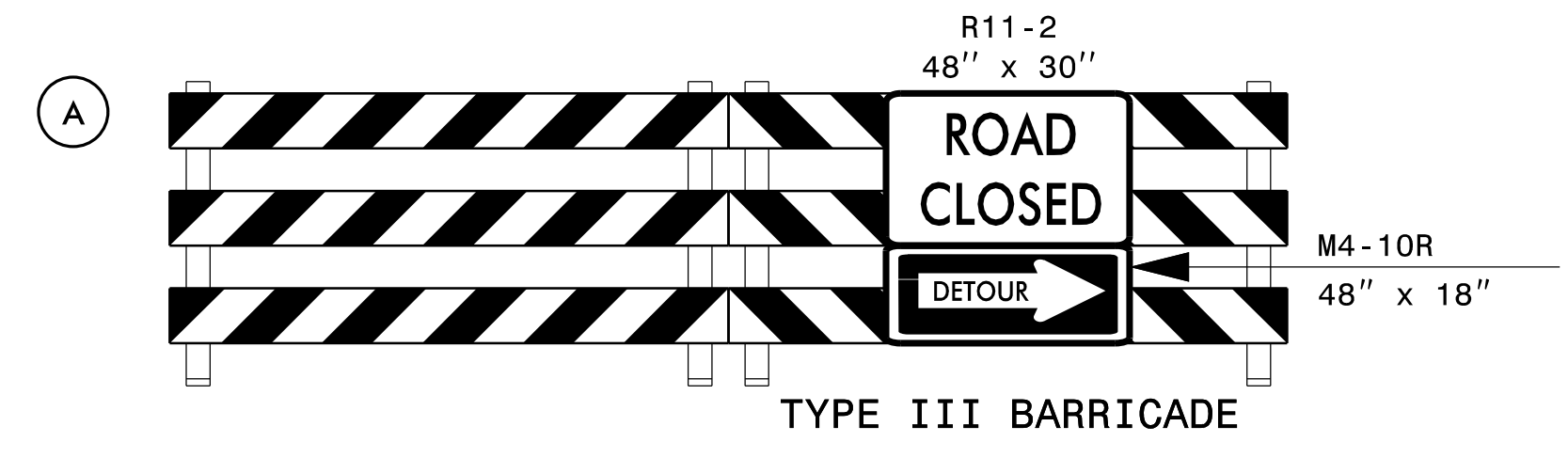
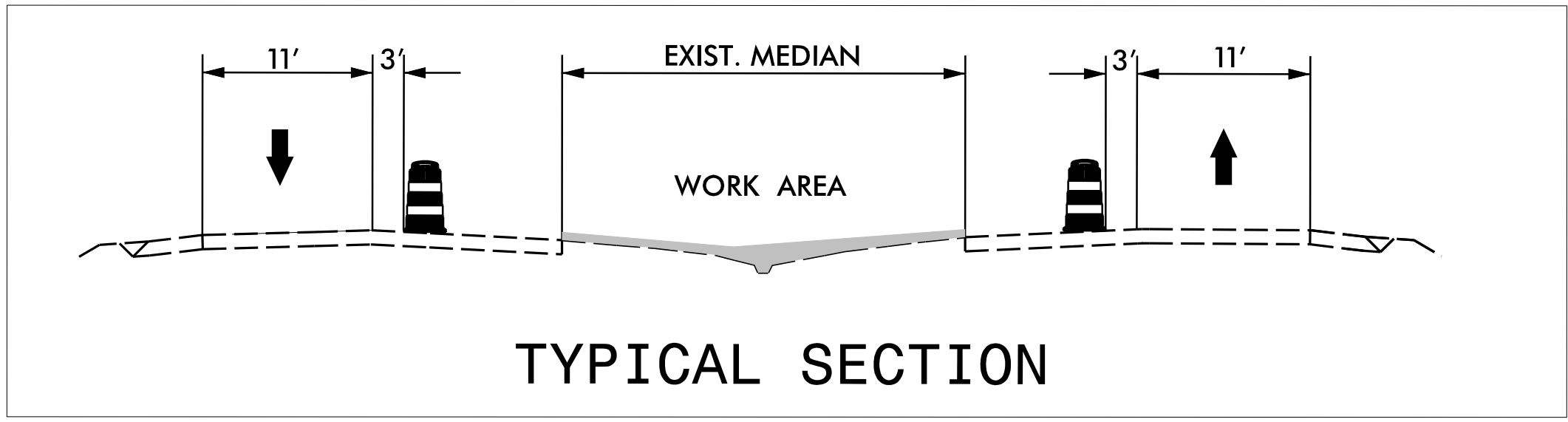
**SECTION 8 354+20 +/- TO 376+95 +/-**  
**SECTION 9 386+00 +/- TO 423+98 +/-**

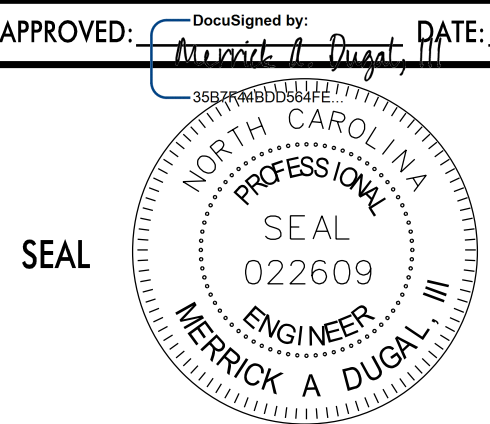
SECTION NOTE: ADJACENT SECTIONS ARE NOT TO BE CONSTRUCTED AT THE SAME TIME. CONTRACTOR TO PROVIDE APPROPRIATE MERGE TAPER AND BUFFER SPACING PER NCDOT RSD 1101.02 (SHEET 3 OF 15) FOR EACH SECTION. (SEE PHASING NOTES FOR SEQUENCING.)

USE NCDOT RSD 1101.02 (SHEET 3 OF 15) FOR MEDIAN ACCESS REMOVAL



USE NCDOT RSD 1101.02 (SHEET 3 OF 15) FOR MEDIAN ACCESS REMOVAL



APPROVED: 	DATE: 9/9/2015	<b>PHASE II</b>	
SEAL	DATE: 022609		
DEVELOPED BY: DAJ	REVIEWED BY: MAD	SCALE: 1"=50'	Prepared For:
RKA PROJ. #: 14071			REVISIONS