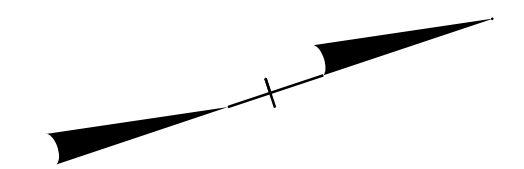


SECTION 8 354+20 +/- TO 376+95 +/-

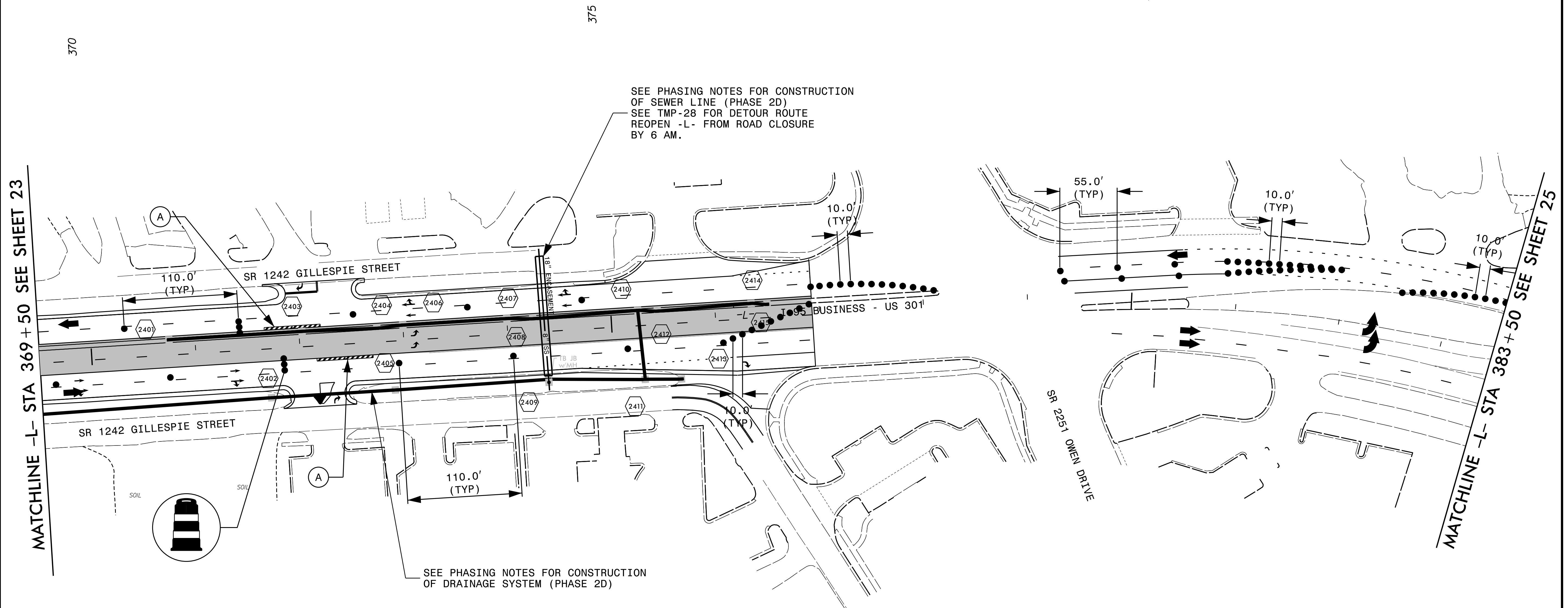
PROJ. REFERENCE NO. W-5519	SHEET NO. TMP-24
-------------------------------	---------------------

RAMEY KEMP ASSOCIATES, INC.
 Transportation Engineers
 5808 Faringdon Place, Suite 100
 Raleigh, North Carolina 27609
 919-872-5115 Tel. 919-878-5416 Fax.
 www.rameykemp.com
 NC License No. C-0910



CONSTRUCTION

NOTE: MAINTAIN ACCESS TO NEARBY CROSSOVER WITHIN 1 MILE OF WORK AREA AT ALL TIMES.

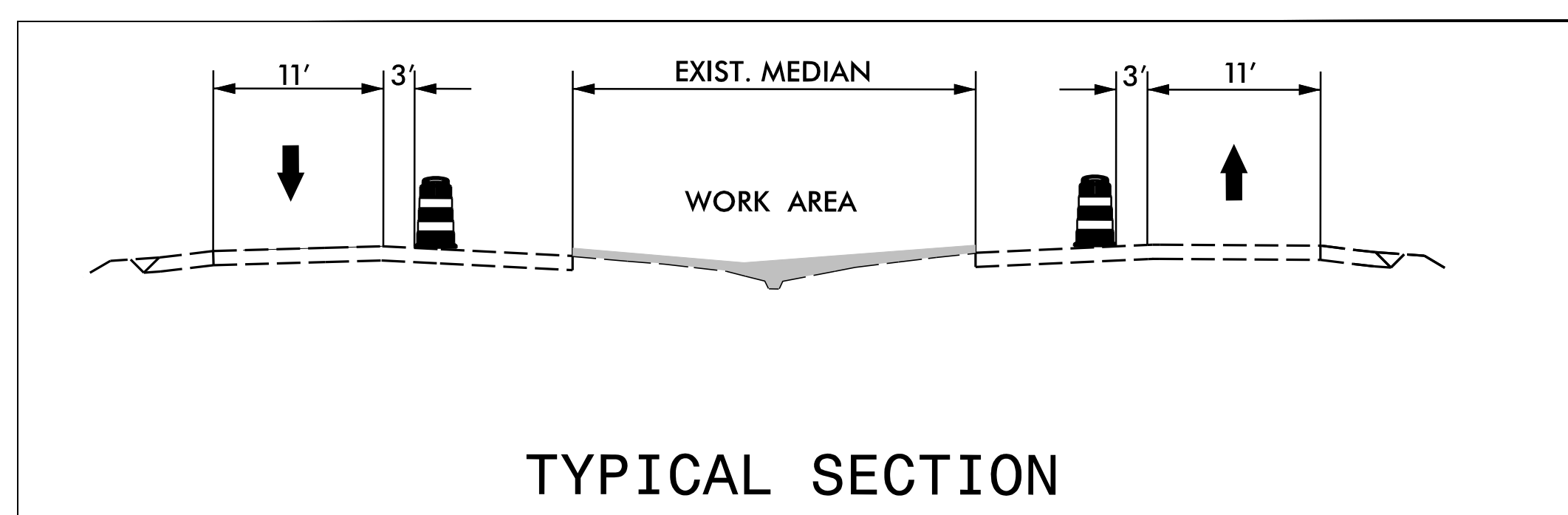


SEE PHASING NOTES FOR CONSTRUCTION OF SEWER LINE (PHASE 2D)
 SEE TMP-28 FOR DETOUR ROUTE
 REOPEN -L- FROM ROAD CLOSURE BY 6 AM.

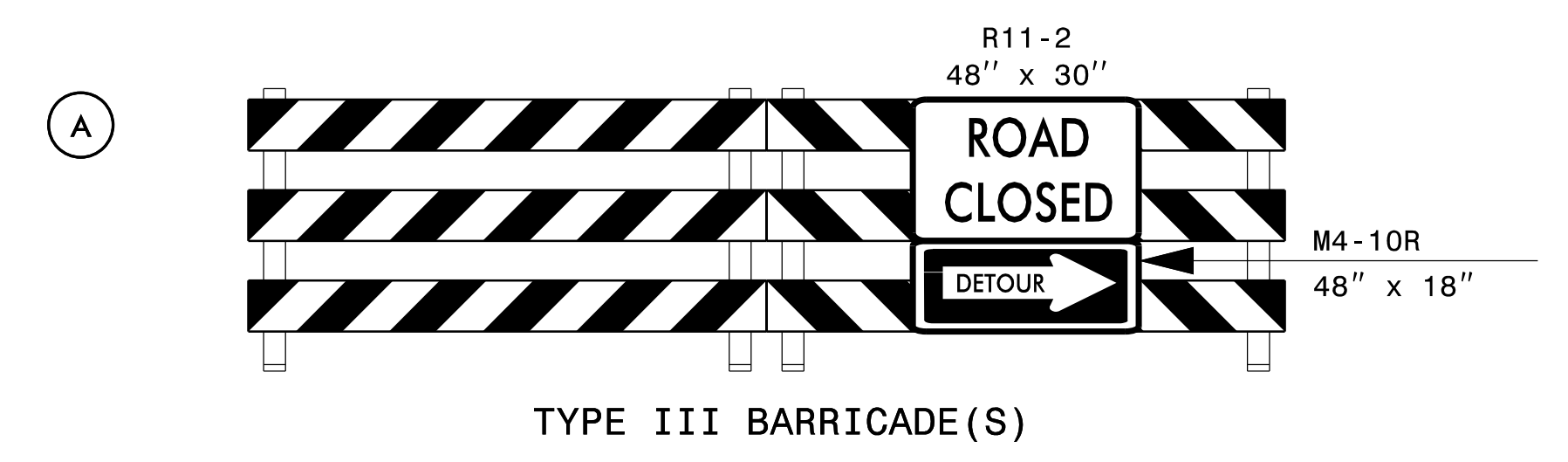
SEE PHASING NOTES FOR CONSTRUCTION OF DRAINAGE SYSTEM (PHASE 2D)

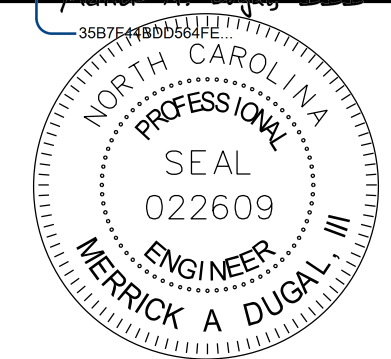
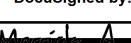

MATCHLINE -L- STA 369+50 SEE SHEET 23

MATCHLINE -L- STA 383+50 SEE SHEET 25



NOTE: CONSTRUCT MEDIAN IMPROVEMENTS (-L- STA. 372+00 +/- TO STA. 377+00 +/-) FROM 9AM TO 4PM WHILE PROVIDING ACCESS FOR THE NORTHBOUND -L- LEFT TURN LANES.



APPROVED: 	Designed by: 	DATE: 11/10/2015	PHASE II	
SEAL	SCALE: 1"=50'	DATE:	Prepared For:	REVISIONS
	DEVELOPED BY: DAJ			
	REVIEWED BY: MAD			
	RKA PROJ. #: 14071			