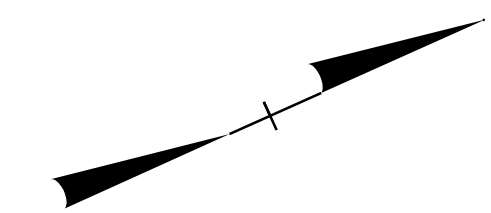


PROJ. REFERENCE NO. W-5519	SHEET NO. TMP - 13
-------------------------------	-----------------------

RAMEY KEMP ASSOCIATES, INC.
 Transportation Engineers
 5808 Farington Place, Suite 100
 Raleigh, North Carolina 27609
 919-872-5115 Tel. 919-878-5416 Fax.
 www.rameykemp.com
 NC License No. C-0910

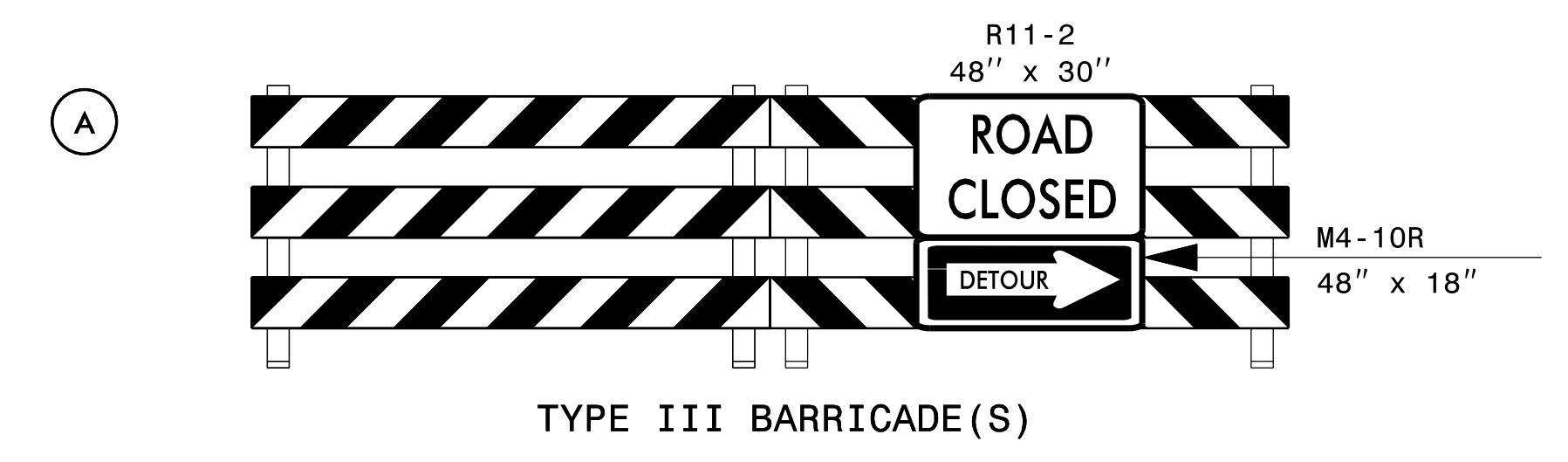
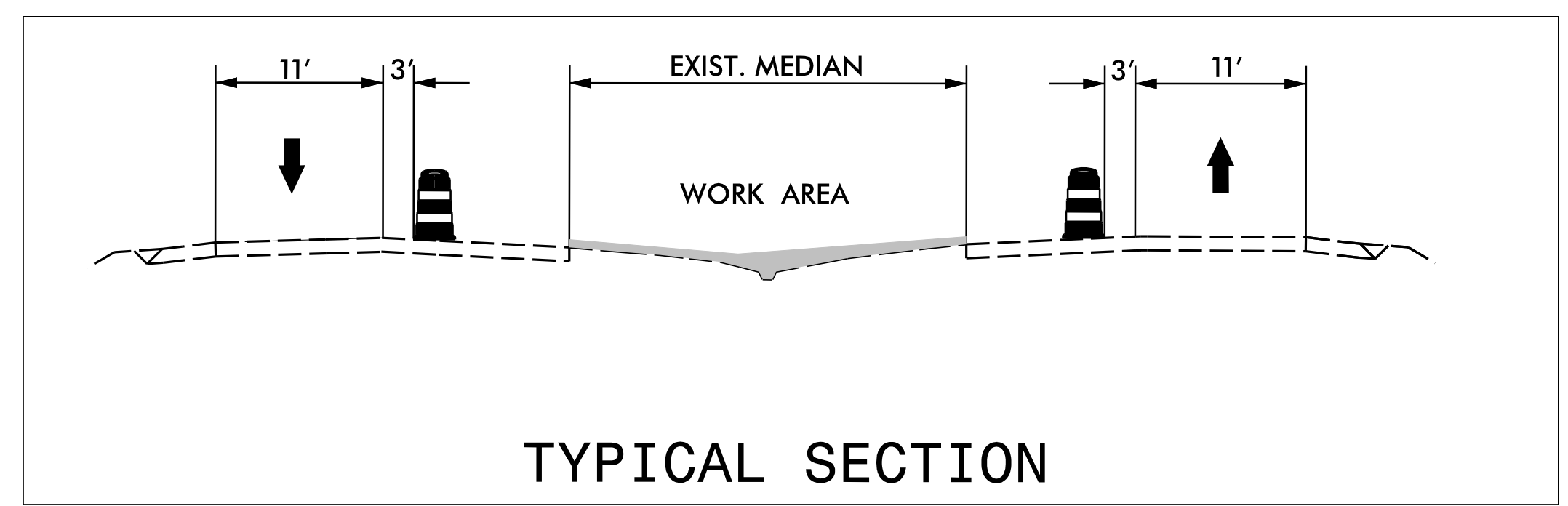
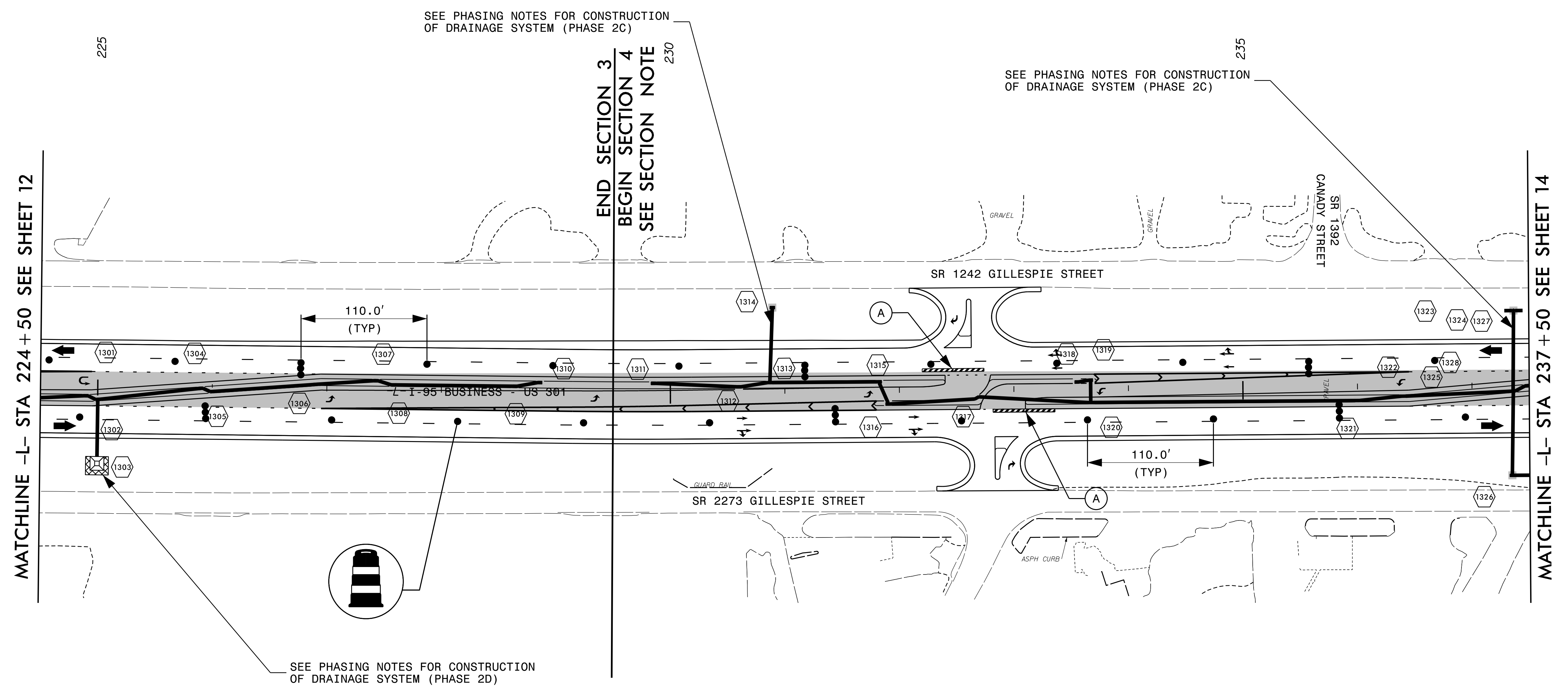


SECTION 3 200+25 +/- TO 229+50 +/-
SECTION 4 229+50 +/- TO 251+00 +/-

SECTION NOTE: ADJACENT SECTIONS ARE NOT TO BE CONSTRUCTED AT THE SAME TIME. CONTRACTOR TO PROVIDE APPROPRIATE MERGE TAPER AND BUFFER SPACING PER NCDOT RSD 1101.02 (SHEET 3 OF 15) FOR EACH SECTION. (SEE PHASING NOTES FOR SEQUENCING.)

CONSTRUCTION

NOTE: MAINTAIN ACCESS TO NEARBY CROSSOVER WITHIN 1 MILE OF WORK AREA AT ALL TIMES.



APPROVED: _____ DATE: _____	PHASE II		
DocuSigned by: Merrick A. Dugal PROFESSIONAL ENGINEER SEAL 022609 10/28/2015 MERRICK A. DUGAL	SCALE: 1"=50'	Prepared For:	
	DATE:		
	DEVELOPED BY: DAJ		REVISIONS
	REVIEWED BY: MAD		
RKA PROJ. #: 14071	CADD FILE		