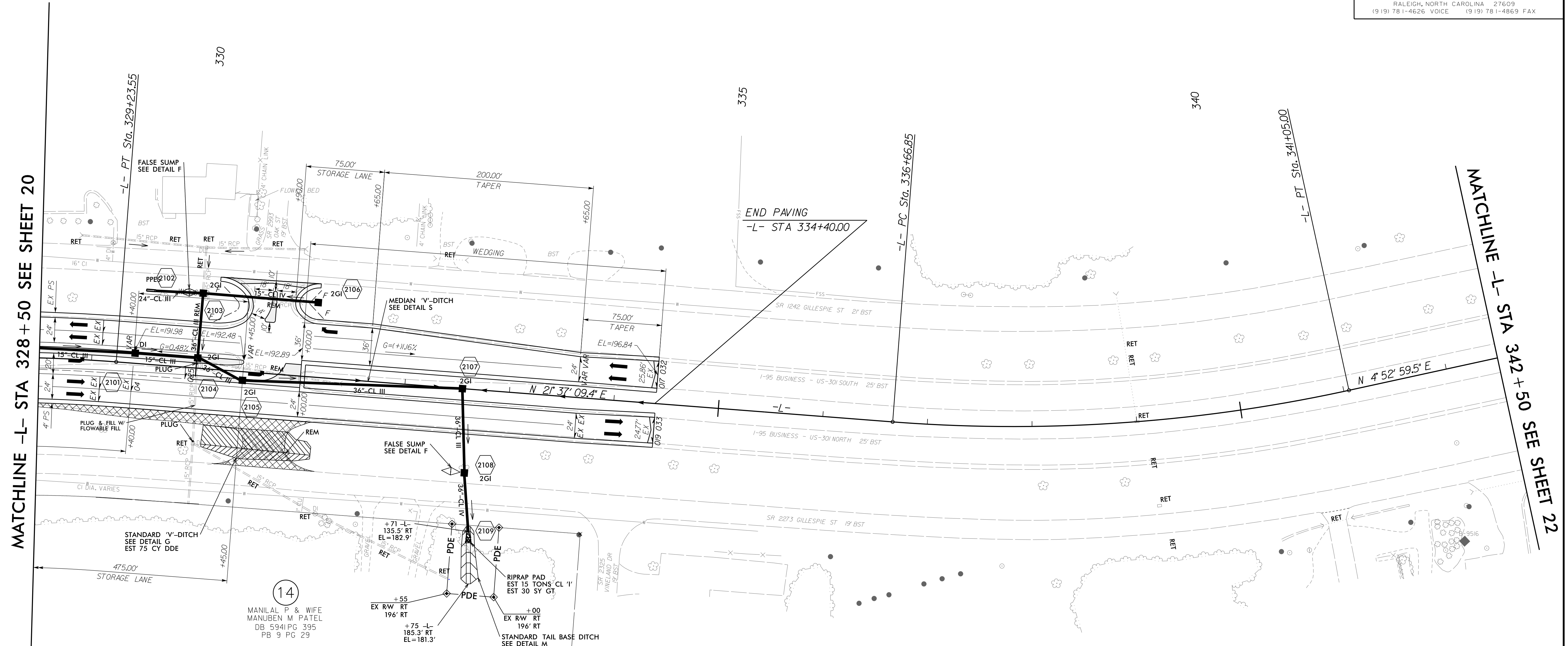
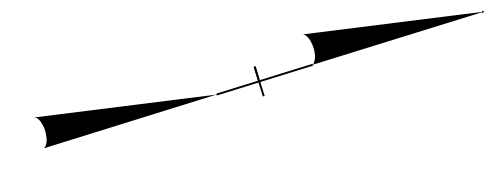


PROJECT REFERENCE NO. W-5519	SHEET NO. 21
RW SHEET NO.	
ROADWAY DESIGN ENGINEER 	HYDRAULICS ENGINEER
moffatt & nichol	
1616 EAST MILLBROOK ROAD, SUITE 160 RALEIGH, NORTH CAROLINA 27609 (919) 781-4626 VOICE (919) 781-4869 FAX	

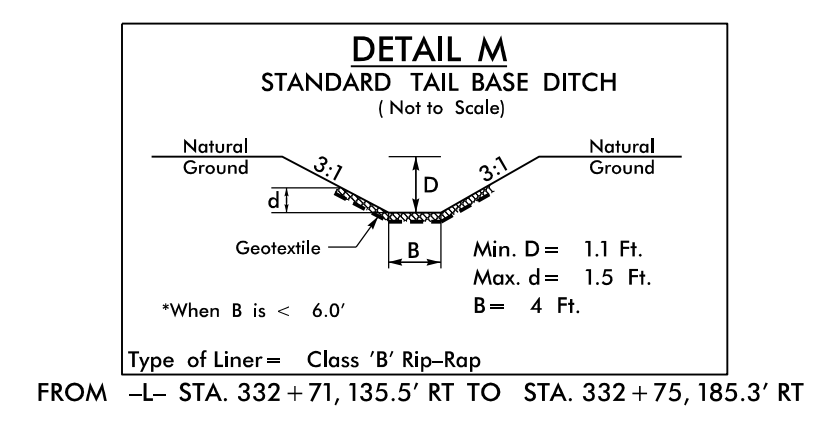
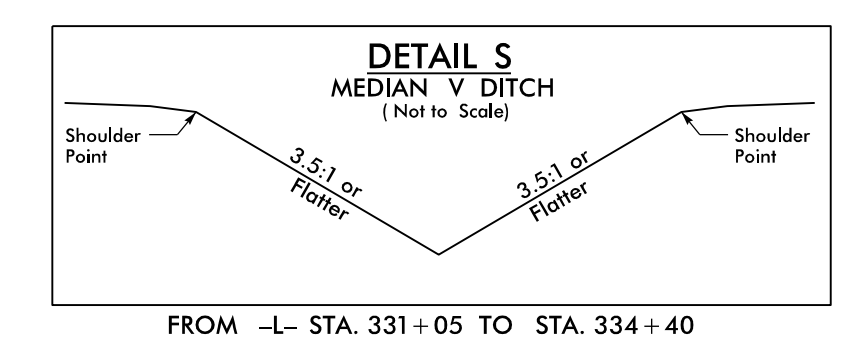
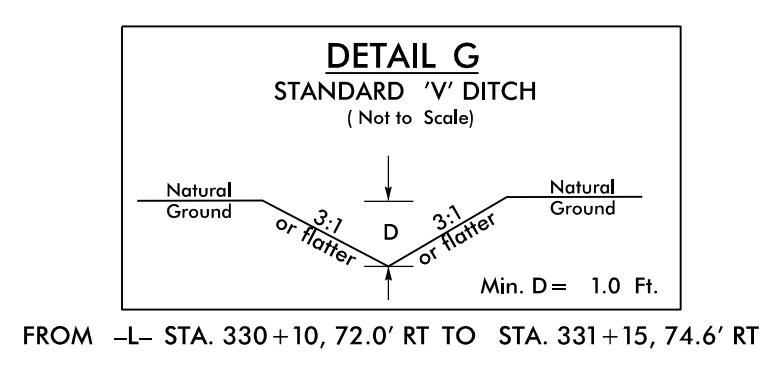
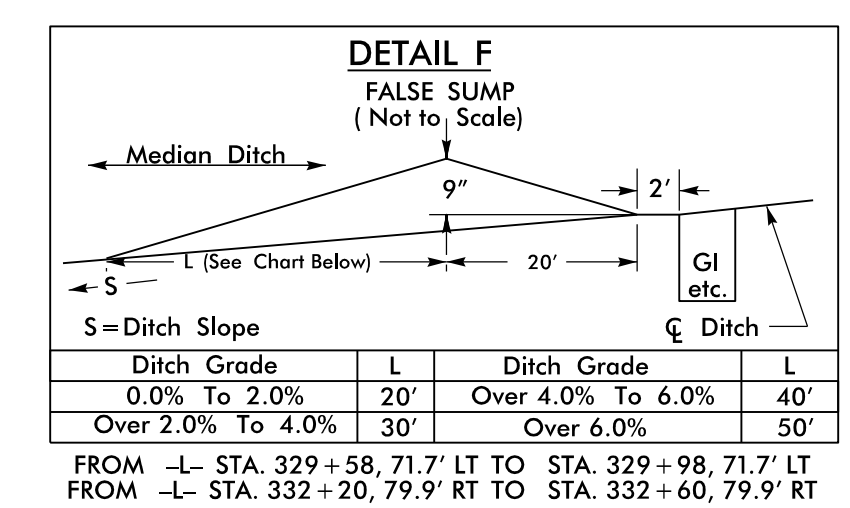
-L-
 PI Sta 326+78.01
 $\Delta = 18^{\circ} 55' 53.1''$ (RT)
 $D = 3^{\circ} 49' 11.0''$
 $L = 495.62'$
 $T = 250.09'$
 $R = 1,500.00'$

-L-
 PI Sta 338+87.49
 $\Delta = 16^{\circ} 44' 09.9''$ (LT)
 $D = 3^{\circ} 49' 11.0''$
 $L = 438.15'$
 $T = 220.65'$
 $R = 1,500.00'$



MATCHLINE -L- STA 328+50 SEE SHEET 20

MATCHLINE -L- STA 342+50 SEE SHEET 22



FOR -L- PROFILE SEE SHEETS 36 & 37 (FOR DITCH GRADES ONLY)
 FOR DIRECTIONAL CROSSOVER AND MEDIAN U-TURNS
 SEE DETAIL #16 ON SHEET 2B-5

8/17/99
 9/3/2015
 P:\8467\Cadd\W5519\Roadway\Proj\W-5519_rdy_psh_s21.dgn