
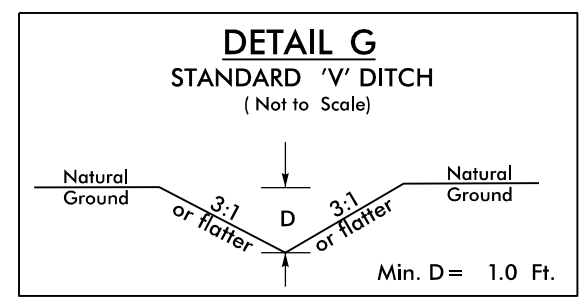
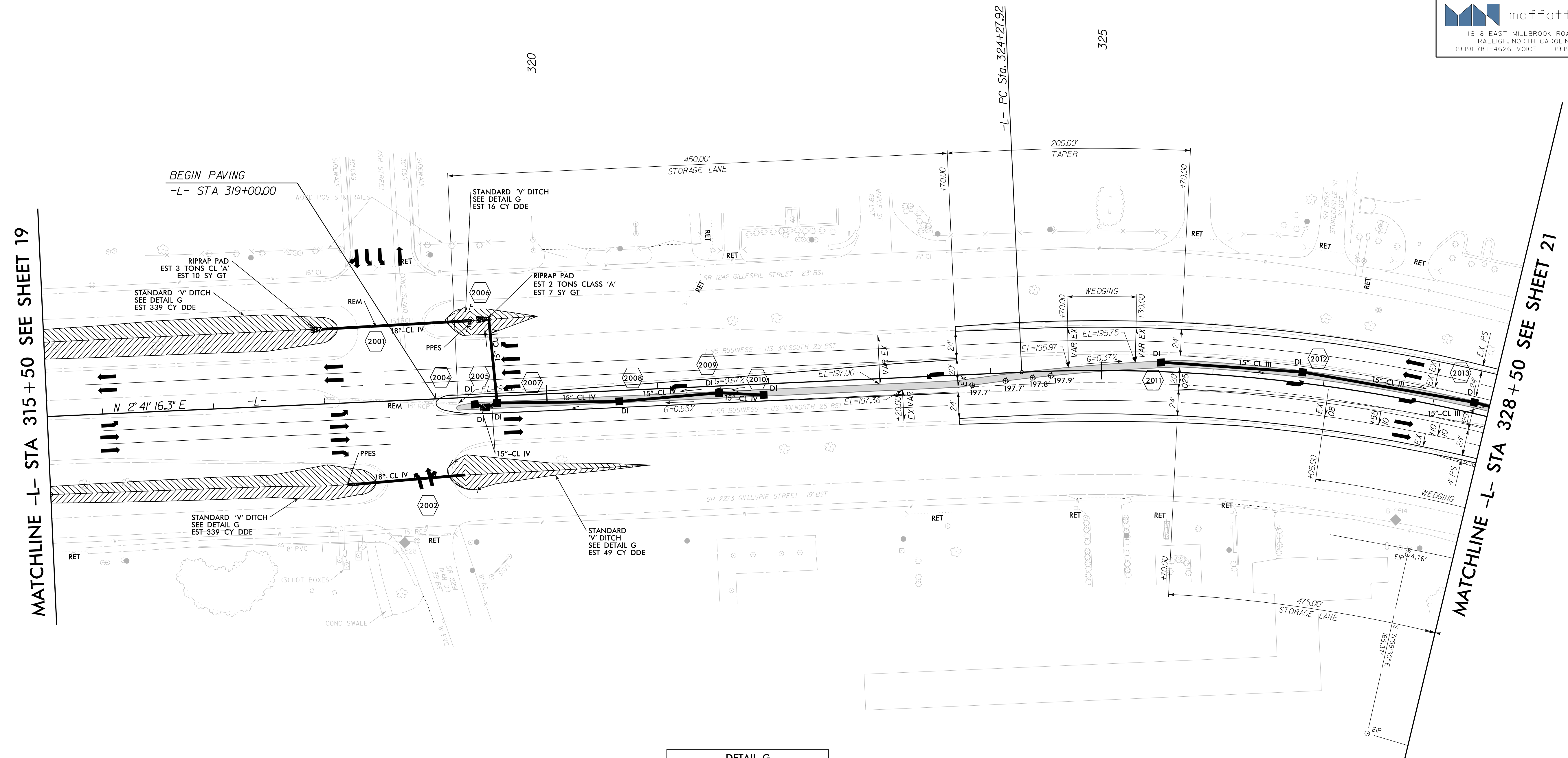
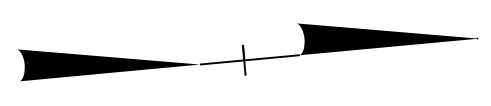


8/17/99

PROJECT REFERENCE NO. W-5519		SHEET NO. 20	
RW SHEET NO.			
ROADWAY DESIGN ENGINEER T. R. REID SEAL 015869 10/8/2015		HYDRAULICS ENGINEER JEFFREY L. ROCK SEAL 026696 10/9/2015	
 1616 EAST MILLBROOK ROAD, SUITE 160 RALEIGH, NORTH CAROLINA 27609 (919) 781-4626 VOICE (919) 781-4869 FAX			

-L-
 PI Sta 326+78.01
 $\Delta = 18^{\circ} 55' 53.1''$ (RT)
 $D = 3^{\circ} 49' 11.0''$
 $L = 495.62'$
 $T = 250.09'$
 $R = 1,500.00'$



FROM -L- STA. 312+44, 66.1' LT TO STA. 318+01, 67.3' LT
 FROM -L- STA. 313+16, 68.1' RT TO STA. 318+17, 73.3' RT
 FROM -L- STA. 319+36, 69.1' LT TO STA. 319+95, 70.2' LT
 FROM -L- STA. 319+24, 69.8' RT TO STA. 320+90, 68.3' RT

FOR -L- PROFILE SEE SHEET 36 (FOR DITCH GRADES ONLY)
 FOR DIRECTIONAL CROSSOVER AND MEDIAN U-TURNS
 SEE DETAIL #15 ON SHEET 2B-4
 FOR PROPOSED CURB ELEVATIONS TABLE SEE SHEET 2D

10/8/2015
 F:\8467\Cadd\W5519\Roadway\Proj\W-5519_rdy.psh_s20.dgn
 T.R.Reid