
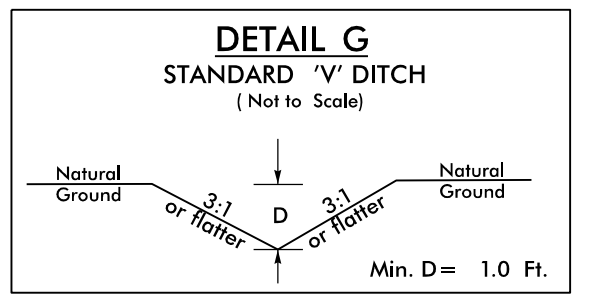
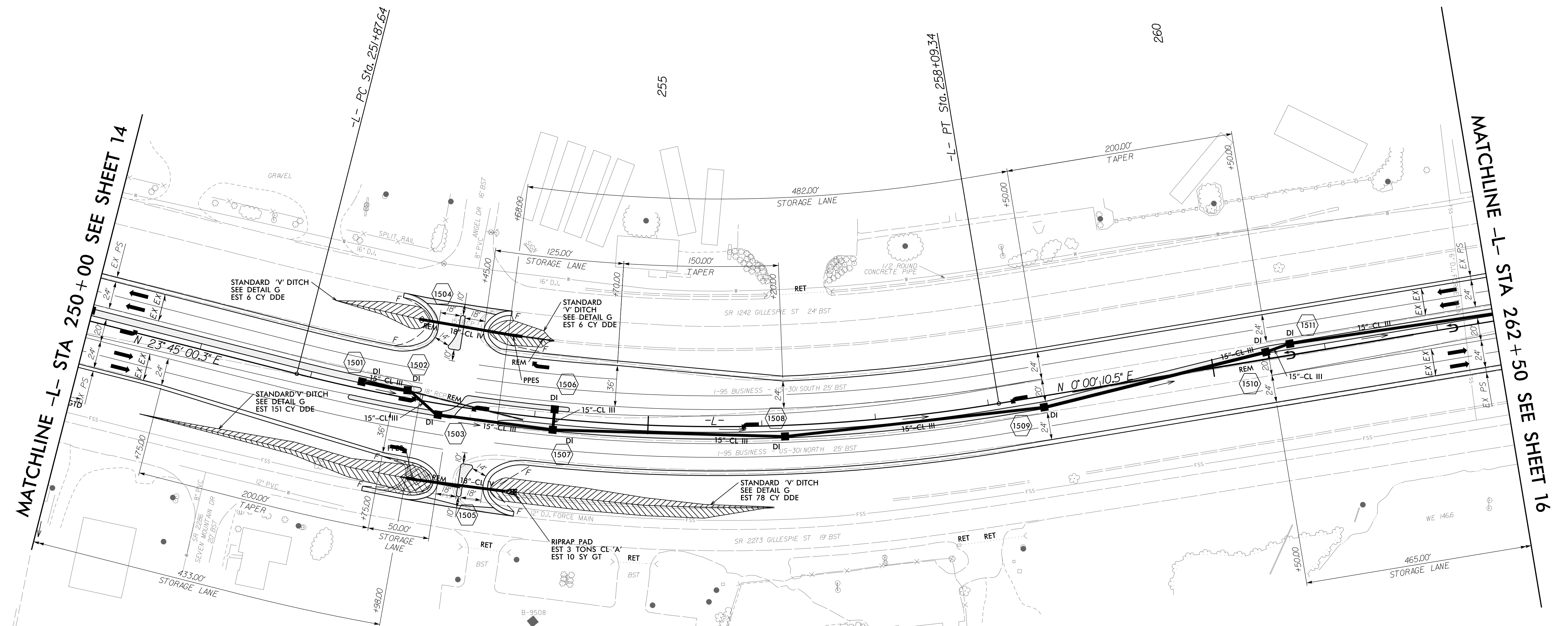
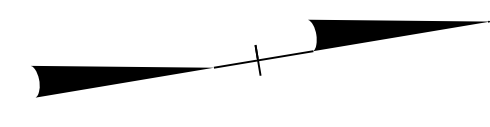


8/17/99

PROJECT REFERENCE NO. W-5519	SHEET NO. 15
RW SHEET NO.	
ROADWAY DESIGN ENGINEER T. R. REID SEAL 015869 9/9/2015	HYDRAULICS ENGINEER JEFFREY L. ROCK SEAL 026696 9/10/2015
 1616 EAST MILLBROOK ROAD, SUITE 160 RALEIGH, NORTH CAROLINA 27609 (919) 781-4626 VOICE (919) 781-4869 FAX	

-L-
 PI Sta. 255+03.01
 $\Delta = 23^{\circ}44'49.8"$ (LT)
 $D = 3^{\circ}49'11.0"$
 $L = 621.70'$
 $T = 315.38'$
 $R = 1,500.00'$



FROM -L- STA. 250+63, 68.3' RT TO STA. 252+98, 68.6' RT
 FROM -L- STA. 252+07, 70.8' LT TO STA. 252+85, 70.1' LT
 FROM -L- STA. 253+81, 68.8' LT TO STA. 254+11, 68.1' LT
 FROM -L- STA. 253+82, 68.0' RT TO STA. 256+09, 71.8' RT

FOR -L- PROFILE SEE SHEETS 33 & 34 (FOR DITCH GRADES ONLY)
 FOR DIRECTIONAL CROSSOVER AND MEDIAN U-TURNS
 SEE DETAIL #10 ON SHEET 2B-3

9/3/2015
 P:\8467\Cadd\W5519\Roadway\Proj\W-5519_rdy_psh_s15.dgn
 024_02