
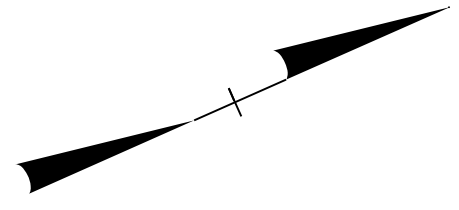
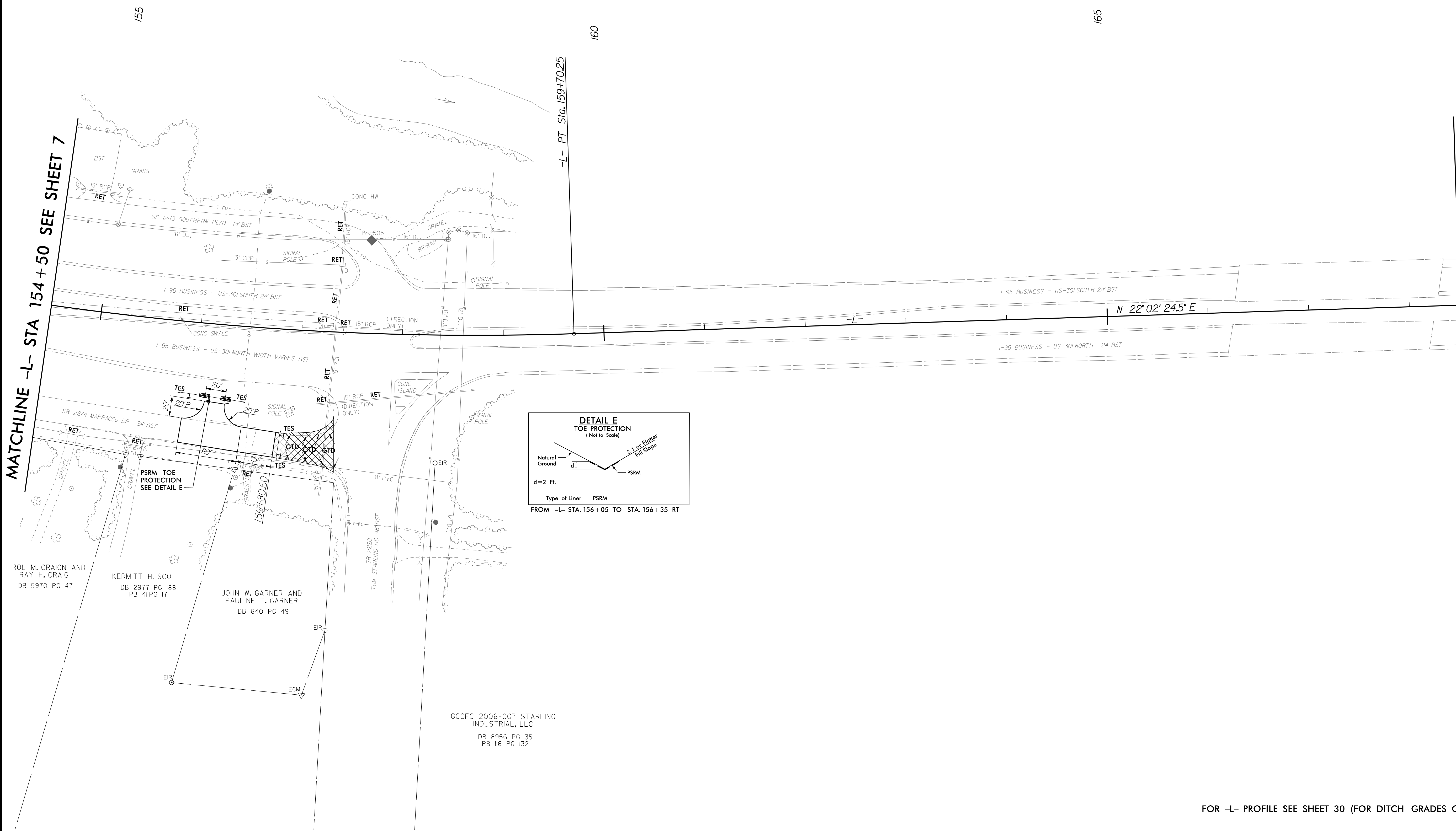


8/17/99

PROJECT REFERENCE NO. <b>W-5519</b>	SHEET NO. <b>8</b>
RW SHEET NO.	
ROADWAY DESIGN ENGINEER <b>T. R. REID</b> SEAL 015869 9/9/2015	HYDRAULICS ENGINEER <b>JEFFREY L. ROCK</b> SEAL 026696 9/10/2015
 1616 EAST MILLBROOK ROAD, SUITE 160 RALEIGH, NORTH CAROLINA 27609 (919) 781-4626 VOICE (919) 781-4869 FAX	

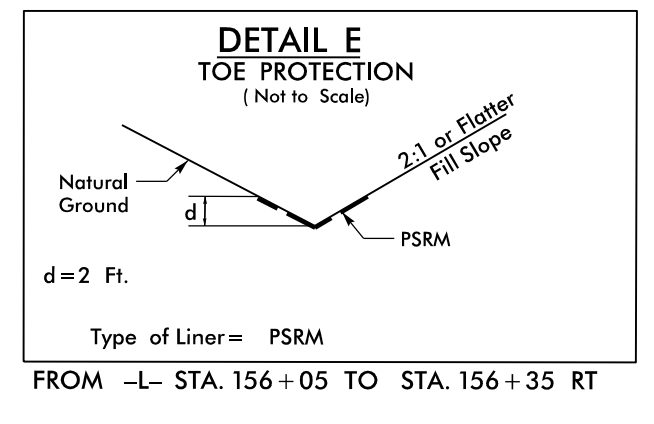


-L-  
 PI Sta 155+39.37  
 $\Delta = 16^{\circ} 34' 29.7" (LT)$   
 $D = 1^{\circ} 54' 35.5"$   
 $L = 867.86'$   
 $T = 436.98'$   
 $R = 3,000.00'$



MATCHLINE -L- STA 154+50 SEE SHEET 7

MATCHLINE -L- STA 168+50 SEE SHEET 9



ROL M. CRAIGN AND RAY H. CRAIG DB 5970 PG 47

KERMIT H. SCOTT DB 2977 PG 188 PB 4 PG 17

JOHN W. GARNER AND PAULINE T. GARNER DB 640 PG 49

GCCFC 2006-GG7 STARLING INDUSTRIAL, LLC DB 8956 PG 35 PB 116 PG 132

9/3/2015 P:\8467\Cadd\W5519\Roadway\Proj\W-5519\_rdy.psh\_s8.dgn

FOR -L- PROFILE SEE SHEET 30 (FOR DITCH GRADES ONLY)