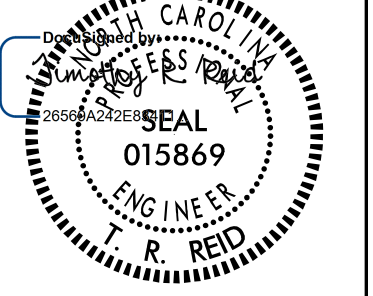
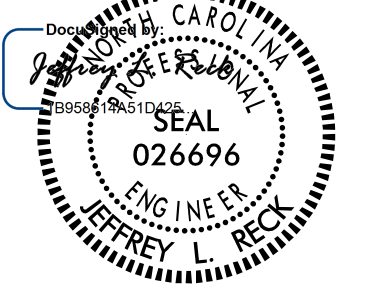

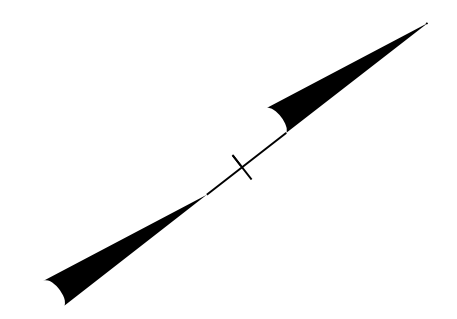


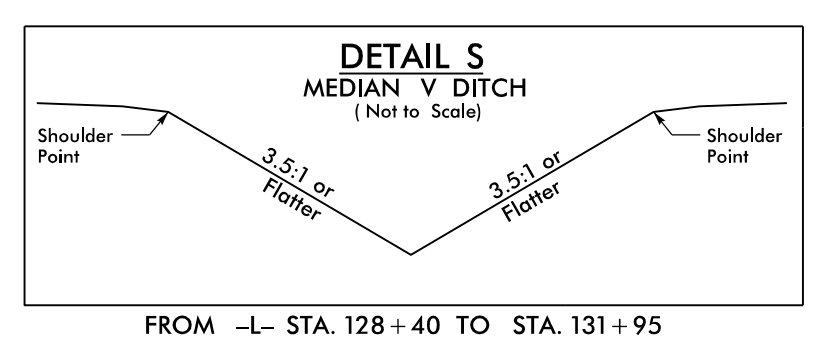
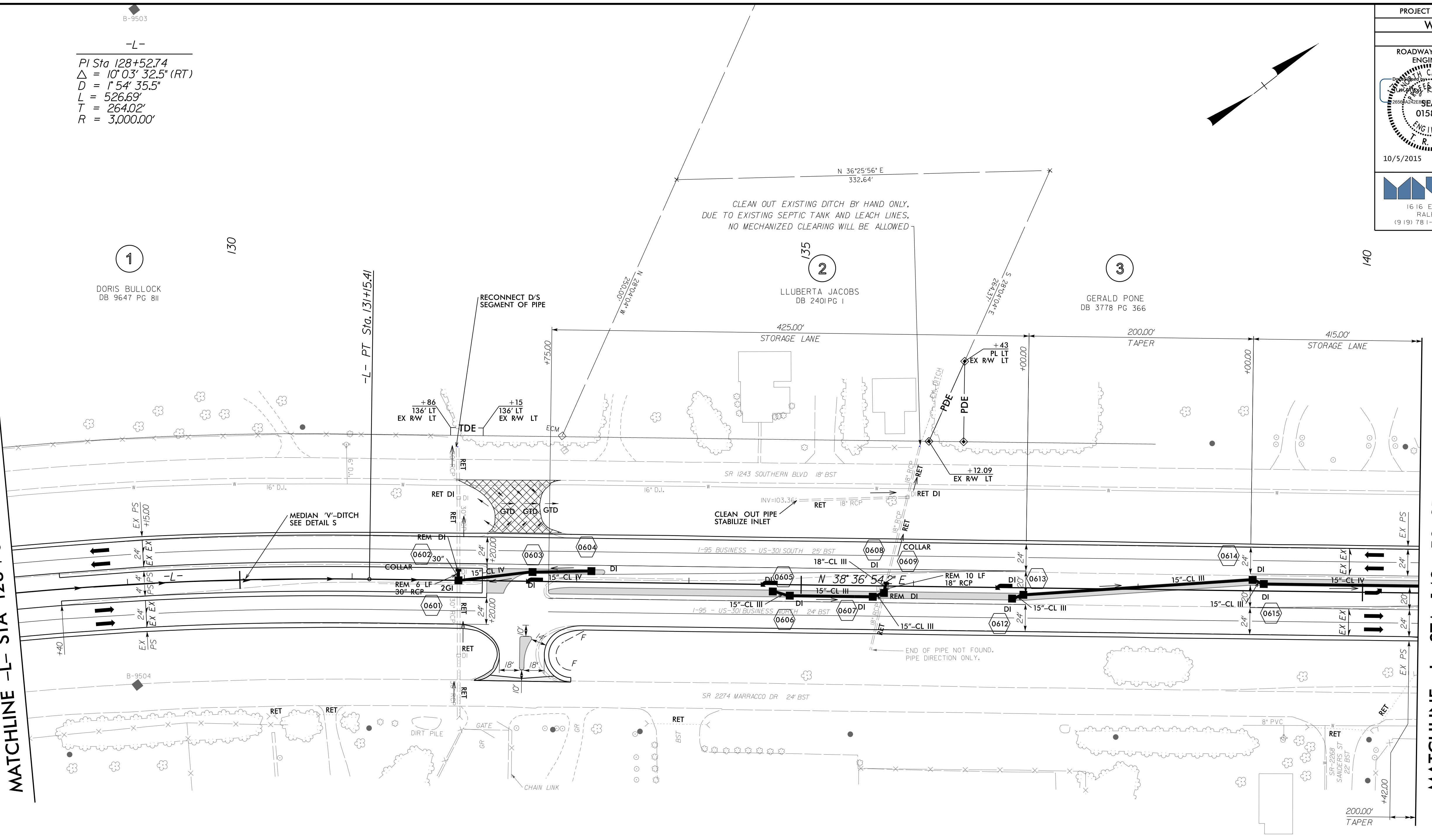
PROJECT REFERENCE NO. W-5519		SHEET NO. 6	
ROADWAY DESIGN ENGINEER		HYDRAULICS ENGINEER	
			
10/5/2015		10/5/2015	
 moffatt & nichol 1616 EAST MILLBROOK ROAD, SUITE 160 RALEIGH, NORTH CAROLINA 27609 (919) 781-4626 VOICE (919) 781-4869 FAX			

-L-
 PI Sta 128+52.74
 $\Delta = 10^{\circ} 03' 32.5''$ (RT)
 $D = 1^{\circ} 54' 35.5''$
 $L = 526.69'$
 $T = 264.02'$
 $R = 3,000.00'$



MATCHLINE -L- STA 128 + 00 SEE SHEET 5

MATCHLINE -L- STA 140 + 50 SEE SHEET 7



FOR -L- PROFILE SEE SHEET 29 (FOR DITCH GRADES ONLY)
 FOR DIRECTIONAL CROSSOVER AND MEDIAN U-TURNS
 SEE DETAIL #4 ON SHEET 2B-1

10/5/2015
 P:\3467\Cadd\W5519\Roadway\Proj\W-5519_rdy_psh_s6.dgn
 J. Smith