

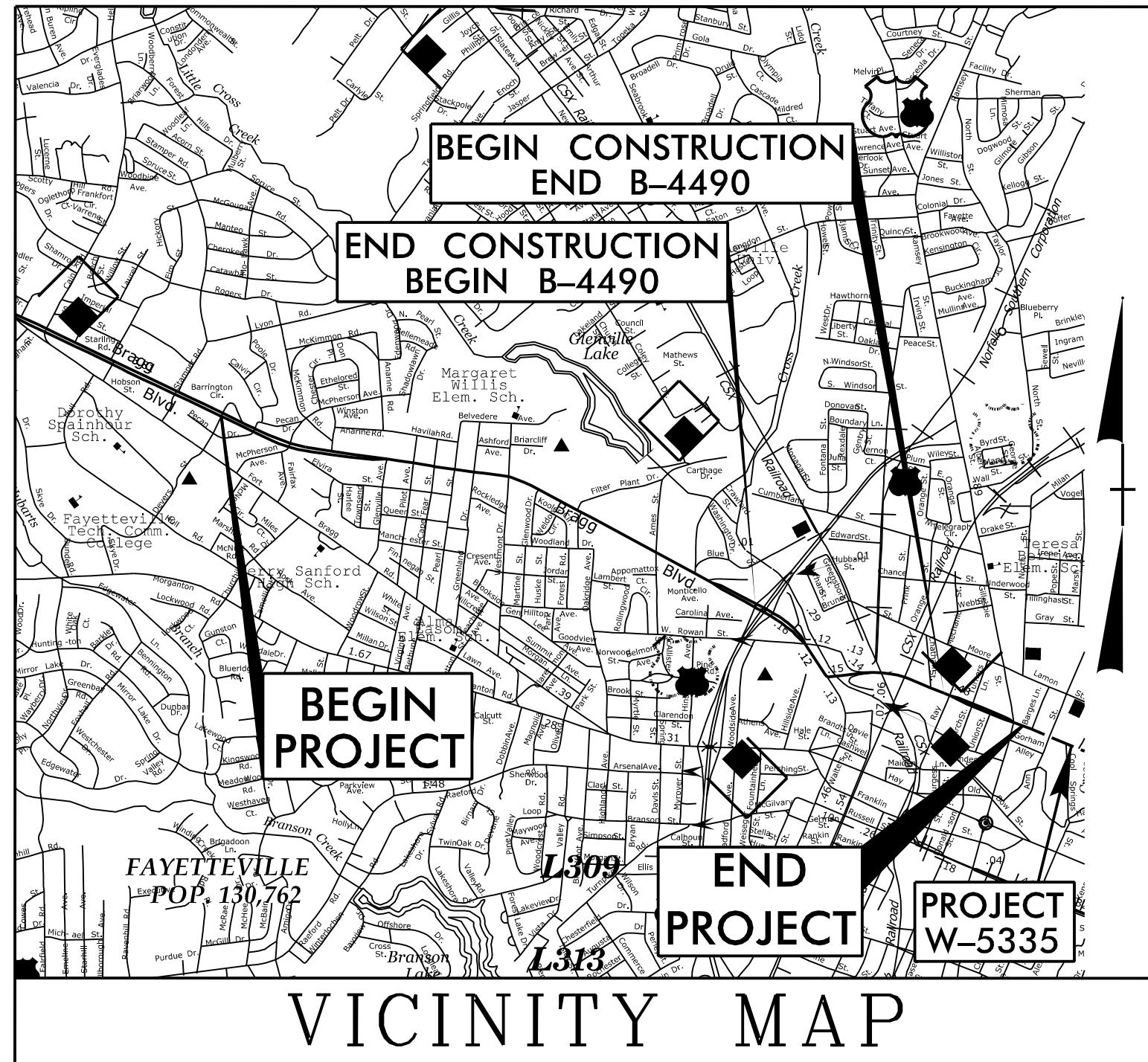
**This electronic collection of documents is provided
for the convenience of the user
and is Not a Certified Document –**

**The documents contained herein were originally issued
and sealed by the individuals whose names and license
numbers appear on each page, on the dates appearing
with their signature on that page.**

**This file or an individual page
shall not be considered a certified document.**

CONTRACT: TIP PROJECT: W-5206AM

See Sheet 1-A For Index of Sheets
See Sheet 1-B For Conventional Symbols

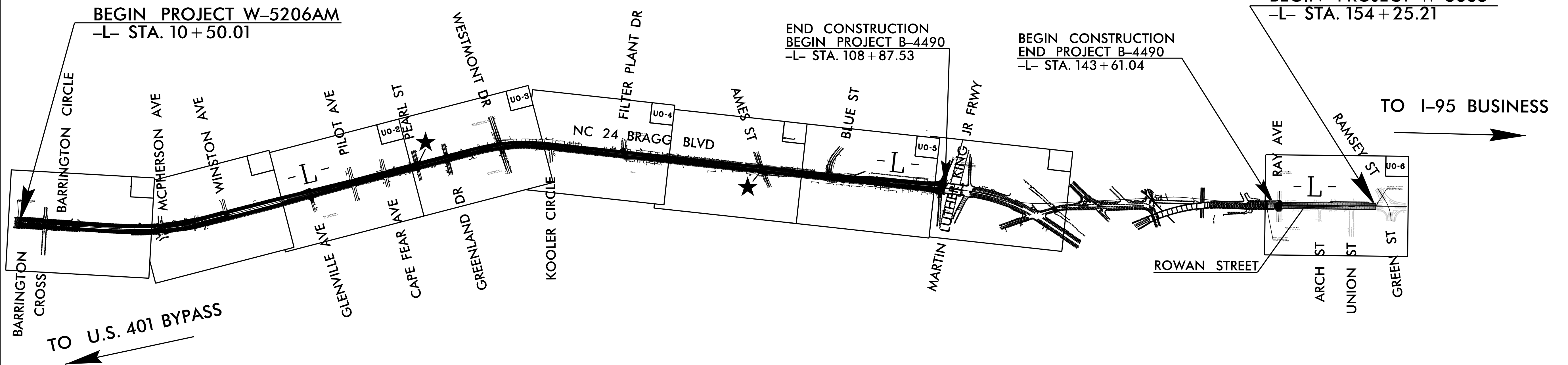
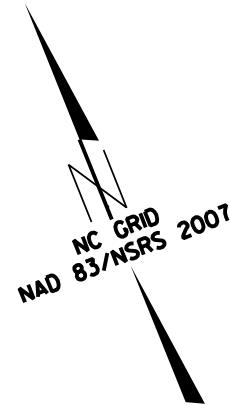


STATE OF NORTH CAROLINA DIVISION OF HIGHWAYS CUMBERLAND COUNTY

LOCATION: NC 24/NC 87 FROM BARRINGTON CROSS ST. TO EAST OF MARTIN LUTHER KING WESTBOUND RAMPS; AND NC 24/NC 210 (ROWAN ST.) BETWEEN RAY AVE. AND RAMSEY ST.

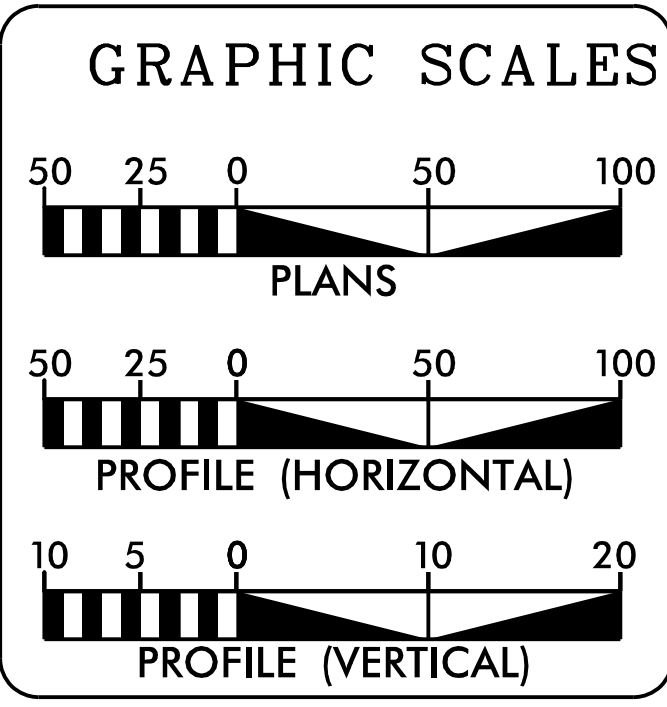
UTILITIES BY OTHERS

STATE	STATE PROJECT REFERENCE NO.	SHEET NO.	TOTAL SHEETS
N.C.	W-5206AM	UO-1	
STATE PROJ. NO.	F.A. PROJ. NO.	DESCRIPTION	
45336.1.FS.39	HSIP-0024(67)	PE	
45336.1.FS.39	HSIP-0024(67)	RW, UTIL	



SO-DEEP The Subsurface Utility Engineering Company
4650 Paragon Park Road, Raleigh, NC 27616 (919) 878-7466

★ PROPOSED SIGNAL



INDEX OF SHEETS

SHEET NO.	DESCRIPTION
UO-1	TITLE SHEET
UO-2 THRU UO-6	UBO PLAN SHEETS

- UTILITY OWNERS ON PROJECT**
- (A) PUBLIC WORKS COMMISSION - POWER (DISTRIBUTION)
 - (B) PUBLIC WORKS COMMISSION - WATER
 - (C) PIEDMONT NATURAL GAS - GAS
 - (D) PUBLIC WORKS COMMISSION - FIBER OPTIC
 - (E) CENTURYLINK - TELECOMMUNICATIONS
 - (F) TIME WARNER CABLE - CABLE TELEVISION

Prepared in the Office of:
CDM Smith
Camp Dresser & McKee
5400 Glenwood Avenue
Suite 400
Raleigh, NC 27612-3228
NC COA No. F-0412

FOR THE NORTH CAROLINA DEPT. OF TRANSPORTATION
2012 STANDARD SPECIFICATIONS

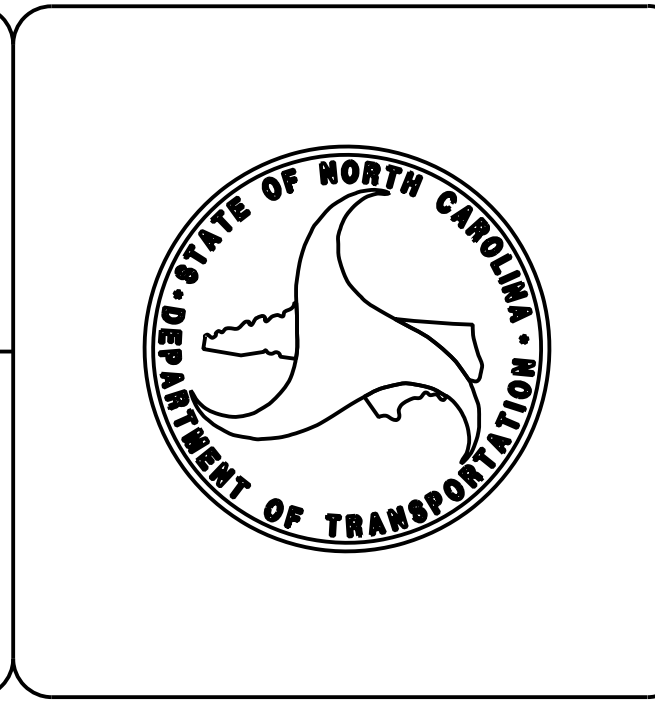
RIGHT OF WAY DATE: DECEMBER 22, 2014	DAVID CLODGO, PE PROJECT ENGINEER
LETTING DATE: DECEMBER 2015	CURTIS TILLMAN, PE PROJECT DESIGN ENGINEER
	SEAN MATUSZEWSKI NCDOT CONTACT

HYDRAULICS ENGINEER

SIGNATURE: _____ P.E.

ROADWAY DESIGN ENGINEER

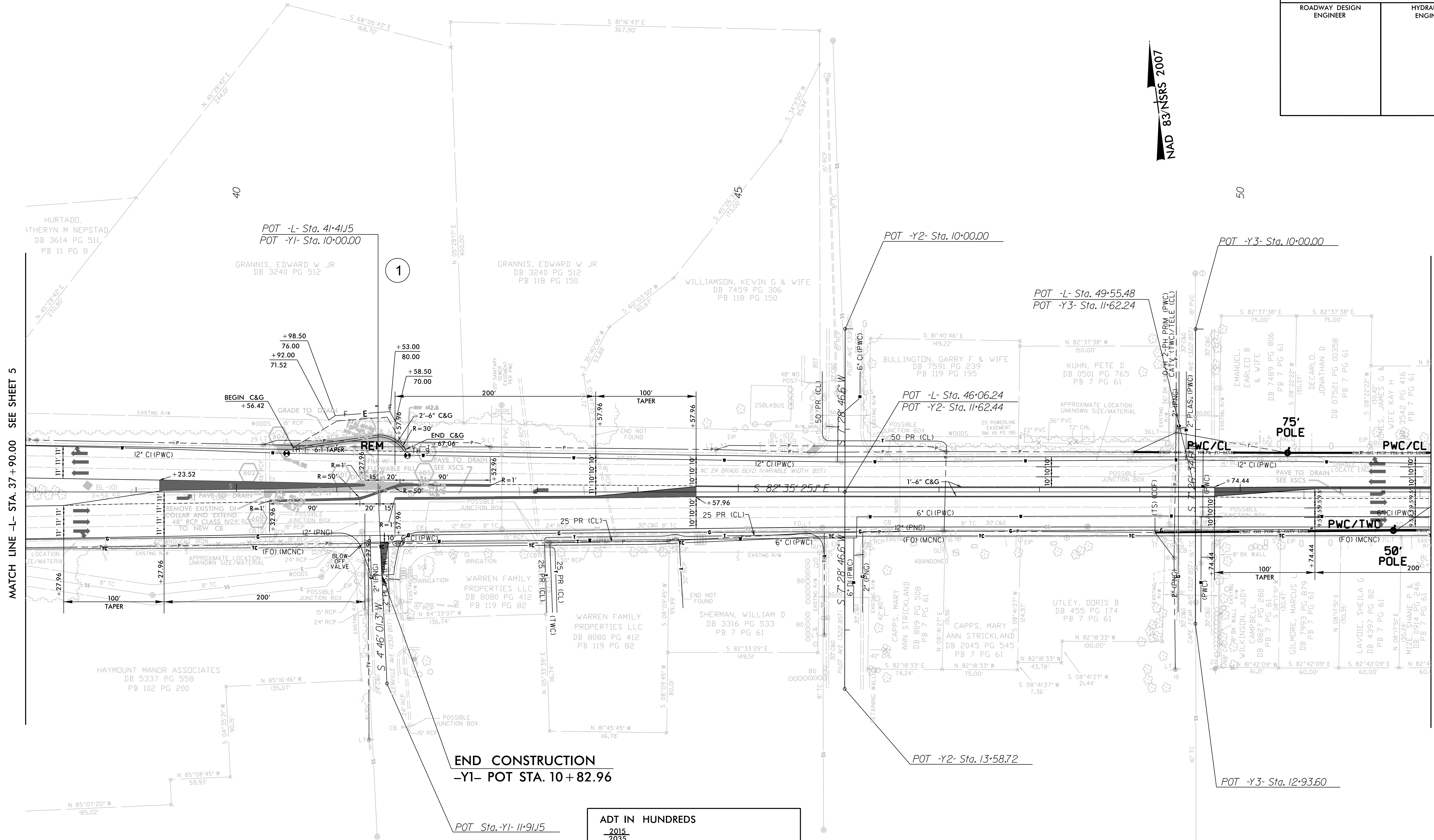
SIGNATURE: _____ P.E.



PROJECT REFERENCE NO. W-5206AM	SHEET NO. UO-2
RW SHEET NO.	
ROADWAY DESIGN ENGINEER	HYDRAULICS ENGINEER

8/17/99

REVISIONS



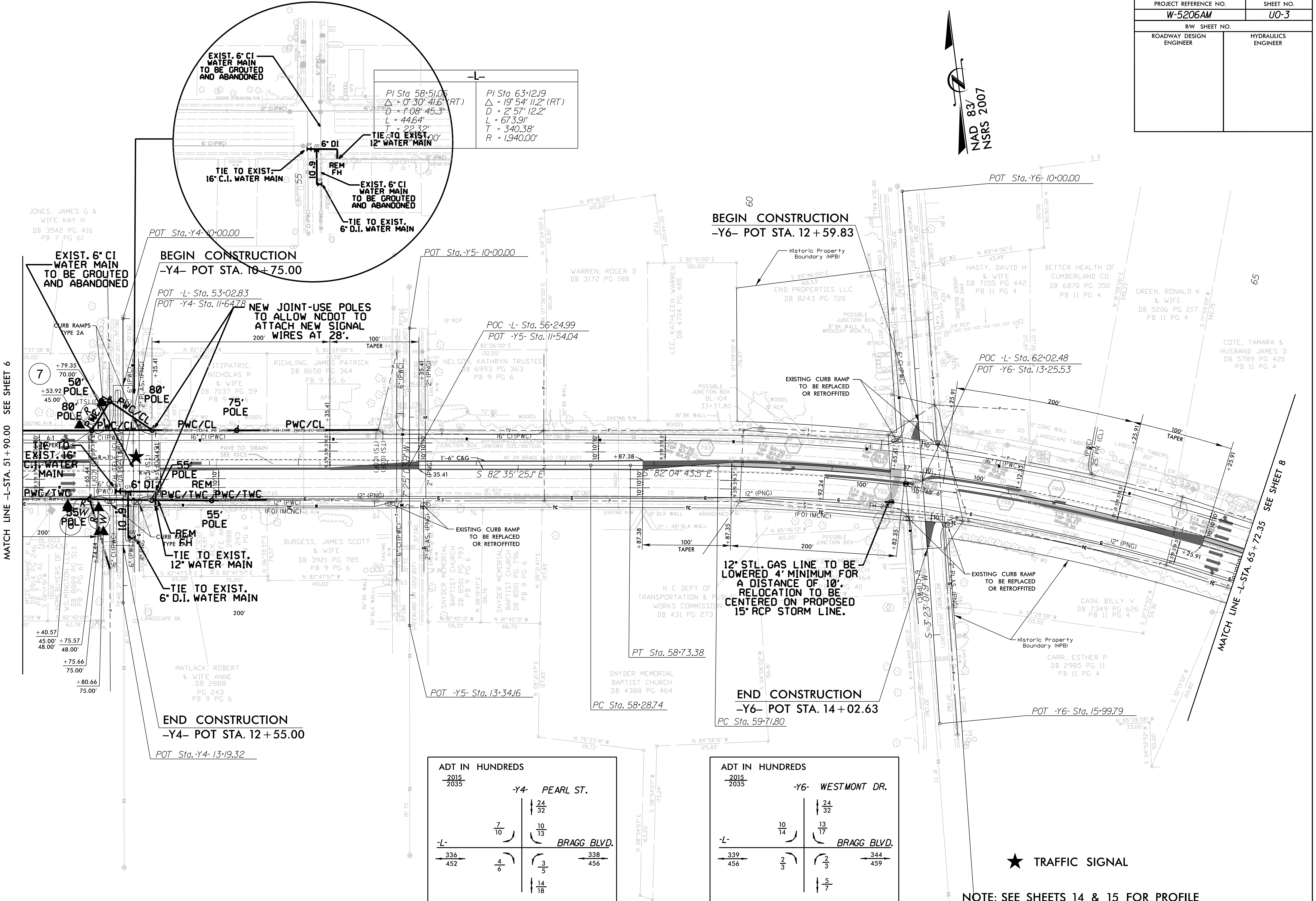
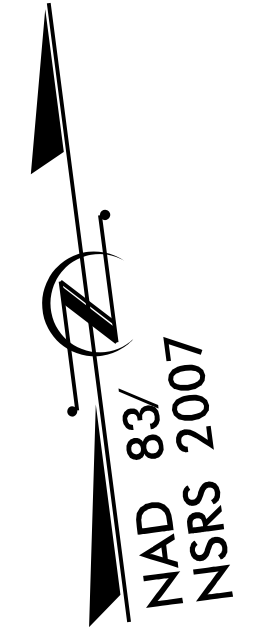
MATCH LINE -L- STA. 37 + 90.00 SEE SHEET 5

MATCH LINE -L- STA. 51 + 90.00 SEE SHEET 7

NAD 83/NSRS 2007

ADT IN HUNDREDS	
2015	2035
-L- BRAGG BLVD.	
334 450	5 7
7 9	336 452
-Y1- GLENVILLE AVE.	
12 16	

NOTE: SEE SHEET 14 FOR PROFILE
SEE SHEET 2B-1 FOR CROSS OVER DETAIL
SEE SHEET 2D-1 & 2D-2 FOR DRAINAGE DETAIL



MATCH LINE -L- STA. 51+90.00 SEE SHEET 6

MATCH LINE -L- STA. 65+72.35 SEE SHEET 8

REVISIONS

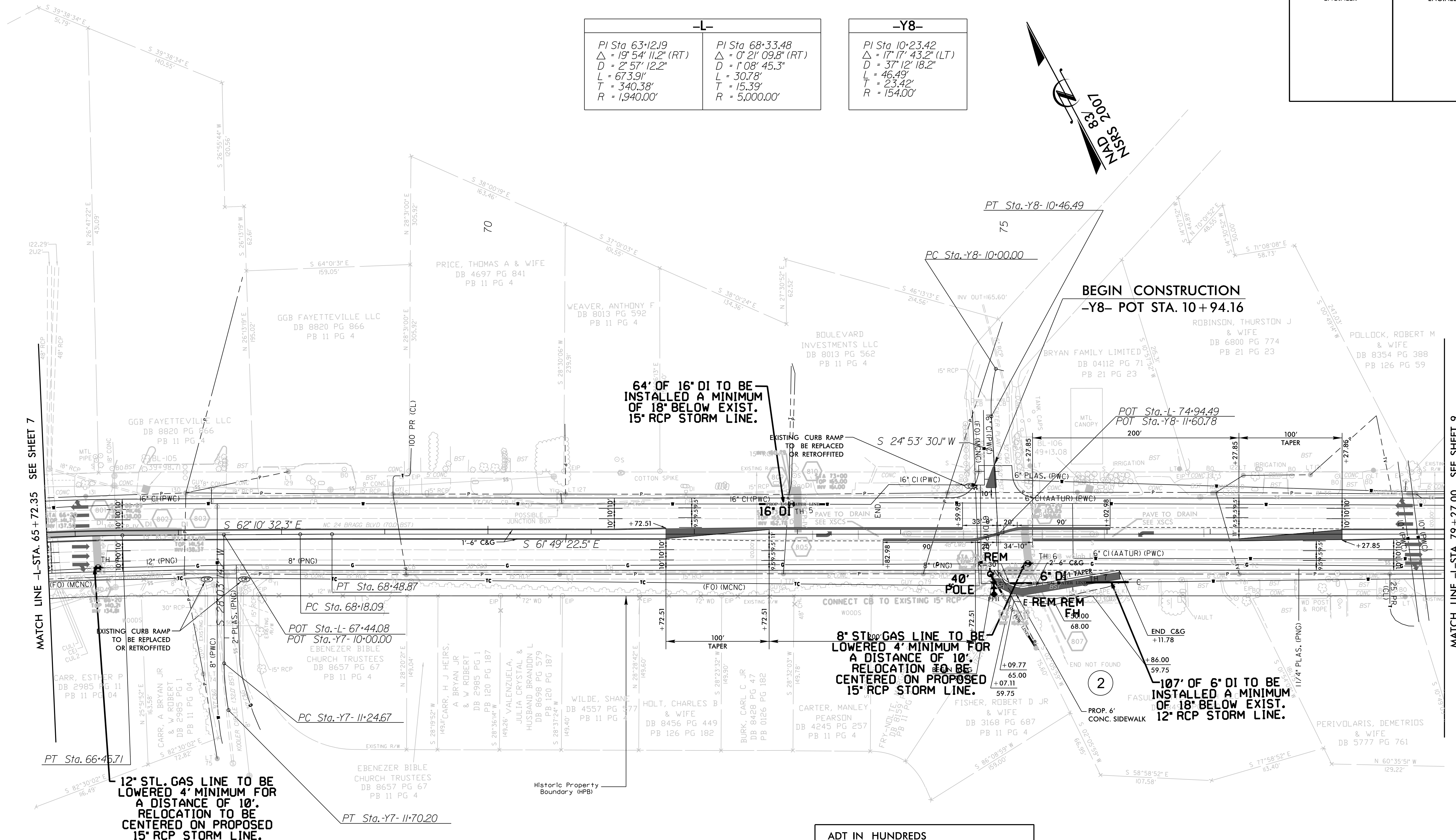
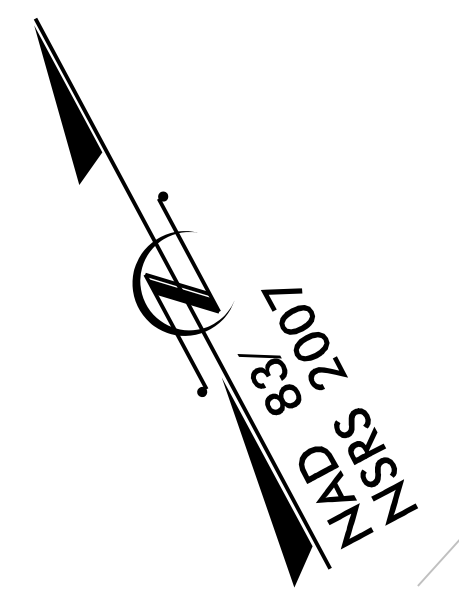
ADT IN HUNDREDS			
2015 / 2035			
-Y4- PEARL ST.			
	7 10	24 32	
-L-		10 13	BRAGG BLVD.
← 336	4 6	3 5	→ 338
452			456
		14 18	

ADT IN HUNDREDS			
2015 / 2035			
-Y6- WESTMONT DR.			
	10 14	24 32	
-L-		13 17	BRAGG BLVD.
← 339	2 3	2 3	→ 344
456			459
		5 7	

★ TRAFFIC SIGNAL

NOTE: SEE SHEETS 14 & 15 FOR PROFILE
SEE SHEET 2B-1A & 2B-2 FOR CROSS OVER DETAILS
SEE SHEET 2D-1 & 2D-2 FOR DRAINAGE DETAILS

-L-		-Y8-	
PI Sta 63+12.19	PI Sta 68+33.48	PI Sta 10+23.42	
$\Delta = 19^{\circ} 54' 11.2" (RT)$	$\Delta = 0^{\circ} 21' 09.8" (RT)$	$\Delta = 17^{\circ} 17' 43.2" (LT)$	
D = 2' 57' 12.2"	D = 1' 08' 45.3"	D = 37' 12' 18.2"	
L = 673.91'	L = 30.78'	L = 46.49'	
T = 340.38'	T = 15.39'	T = 23.42'	
R = 1,940.00'	R = 5,000.00'	R = 154.00'	



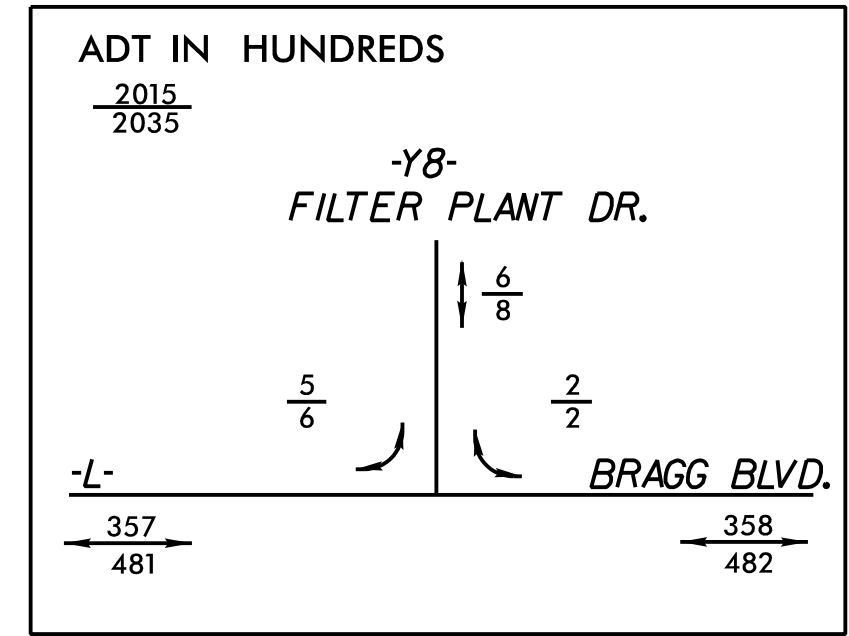
64' OF 16" DI TO BE INSTALLED A MINIMUM OF 18" BELOW EXIST. 15" RCP STORM LINE.

8" STL GAS LINE TO BE LOWERED 4' MINIMUM FOR A DISTANCE OF 10'. RELOCATION TO BE CENTERED ON PROPOSED 15" RCP STORM LINE.

107' OF 6" DI TO BE INSTALLED A MINIMUM OF 12" BELOW EXIST. 12" RCP STORM LINE.

12" STL GAS LINE TO BE LOWERED 4' MINIMUM FOR A DISTANCE OF 10'. RELOCATION TO BE CENTERED ON PROPOSED 15" RCP STORM LINE.

-Y7-	
PI Sta 11+47.49	
$\Delta = 10^{\circ} 26' 04.8" (LT)$	
D = 22' 55' 05.9"	
L = 45.53'	
T = 22.83'	
R = 250.00'	



NOTE: SEE SHEET 15 FOR PROFILE
SEE SHEET 2B-2A FOR CROSS OVER DETAIL

REVISIONS

MATCH LINE -L- STA. 65+72.35 SEE SHEET 7

MATCH LINE -L- STA. 79+27.00 SEE SHEET 9

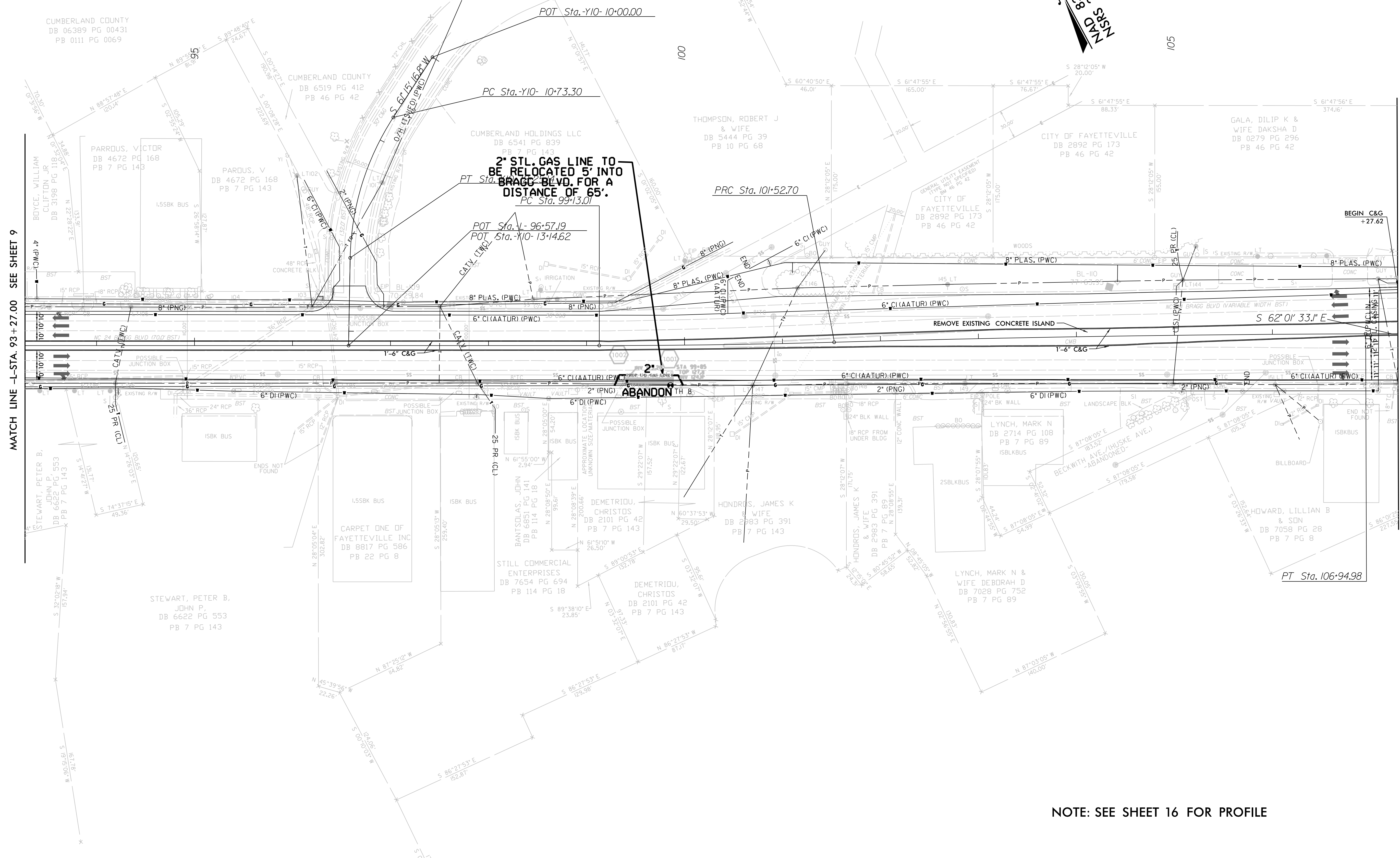
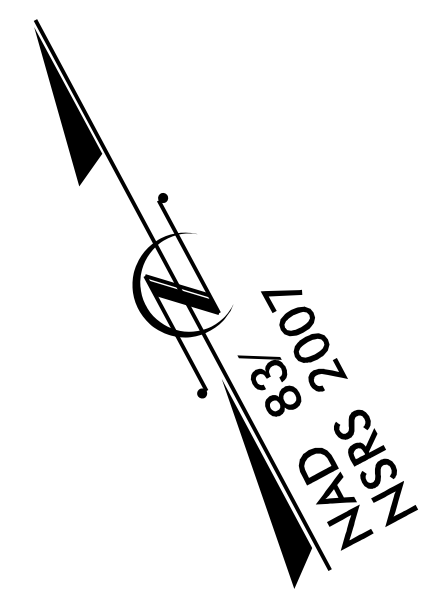
PROJECT REFERENCE NO. W-5206AM	SHEET NO. U0-5
RW SHEET NO.	
ROADWAY DESIGN ENGINEER	HYDRAULICS ENGINEER

8/17/99

-Y10-
 PI Sta 11+51.26
 $\Delta = 32^{\circ} 01' 02.3" (LT)$
 $D = 21^{\circ} 05' 09.6"$
 $L = 151.84'$
 $T = 77.96'$
 $R = 271.72'$

-L-
 PI Sta 100+32.86
 $\Delta = 1^{\circ} 36' 56.4" (LT)$
 $D = 0^{\circ} 40' 26.6"$
 $L = 239.69'$
 $T = 119.85'$
 $R = 8,500.00'$

PI Sta 104+23.93
 $\Delta = 1^{\circ} 24' 45.8" (RT)$
 $D = 0^{\circ} 15' 37.6"$
 $L = 542.44'$
 $T = 271.23'$
 $R = 22,000.00'$



REVISIONS

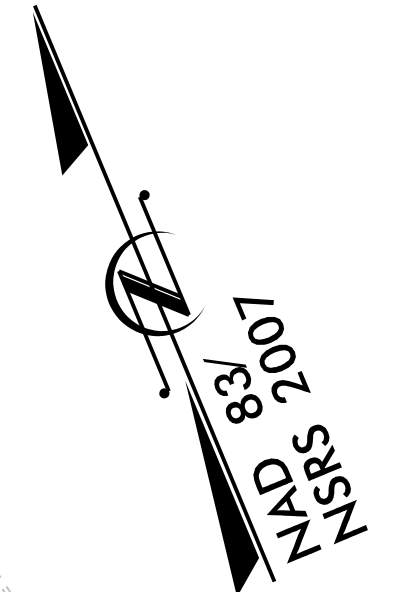
MATCH LINE -L- STA. 93+27.00 SEE SHEET 9

MATCH LINE -L- STA. 107+28.00 SEE SHEET 11

*****SYSTEMTIME*****
 *****DGN*****
 *****\$\$\$\$*****

NOTE: SEE SHEET 16 FOR PROFILE

-L-
 PI Sta 142+28.13
 $\Delta = 5^{\circ} 07' 19.2''$ (LT)
 $D = 1^{\circ} 08' 45.3''$
 $L = 446.98'$
 $T = 223.64'$
 $R = 5,000.00'$



BEGIN CONSTRUCTION
 -Y11- POT STA. 10+99.73

END PROJECT W-5206AM
BEGIN PROJECT W-5335
 -L- POT STA. 154+25.21

NOTE: PWC WATER RELOCATIONS ON THIS SHEET ARE PART OF FACILITY IMPROVEMENTS AND ARE NOT ACCOMMODATIONS FOR THE W-5206AM PROJECT.

EX. 8" CI WATER MAIN TO BE GROUT FILLED AND ABANDONED

TIE TO EXIST. 8" PLAS. WATER MAIN

EX. 4" CI WATER MAIN TO BE GROUT FILLED AND ABANDONED

EX. 8" CI WATER MAIN TO BE GROUT FILLED AND ABANDONED

TIE TO EXIST. 12" CI WATER MAIN

TIE TO EXIST. 8" DI WATER MAIN TO BE REPLACED OR RETROFITTED

EX. 8" CI WATER MAIN TO BE GROUT FILLED AND ABANDONED

TIE TO EXIST. 8" CI WATER MAIN

TIE TO EXIST. 6" CI WATER MAIN

NOTE: PWC WATER RELOCATIONS ON THIS SHEET ARE PART OF FACILITY IMPROVEMENTS AND ARE NOT ACCOMMODATIONS FOR THE W-5206AM PROJECT.

END CONSTRUCTION
 -Y11- POT STA. 12+12.10

BEGIN CONSTRUCTION
 END PROJECT B-4490
 -L- POC STA. 143+61.04

-Y12-
 PI Sta 12+39.87
 $\Delta = 26^{\circ} 21' 41.8''$ (RT)
 $D = 14^{\circ} 49' 01.1''$
 $L = 177.91'$
 $T = 90.56'$
 $R = 386.69'$

ADT IN HUNDREDS		-Y11- RAY AVE.	
2015	2035	15	20
		7	4
		10	6
-L-		ROWAN ST.	
302	407	12	36
		16	49

NOTE: SEE SHEET 17 FOR PROFILE
SEE SHEET 2B-4 FOR INTERSECTION DETAILS

REVISIONS

5

