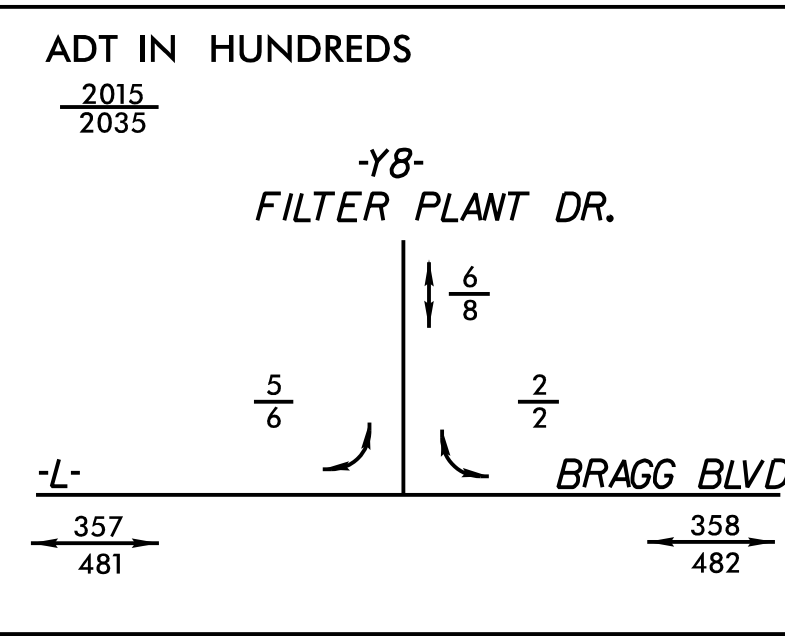


-L-	
PI Sta 63+12.19	PI Sta 68+33.48
$\Delta = 19^{\circ} 54' 11.2" (RT)$	$\Delta = 0^{\circ} 21' 09.8" (RT)$
D = 2' 57' 12.2"	D = 1' 08' 45.3"
L = 673.91'	L = 30.78'
T = 340.38'	T = 15.39'
R = 1,940.00'	R = 5,000.00'

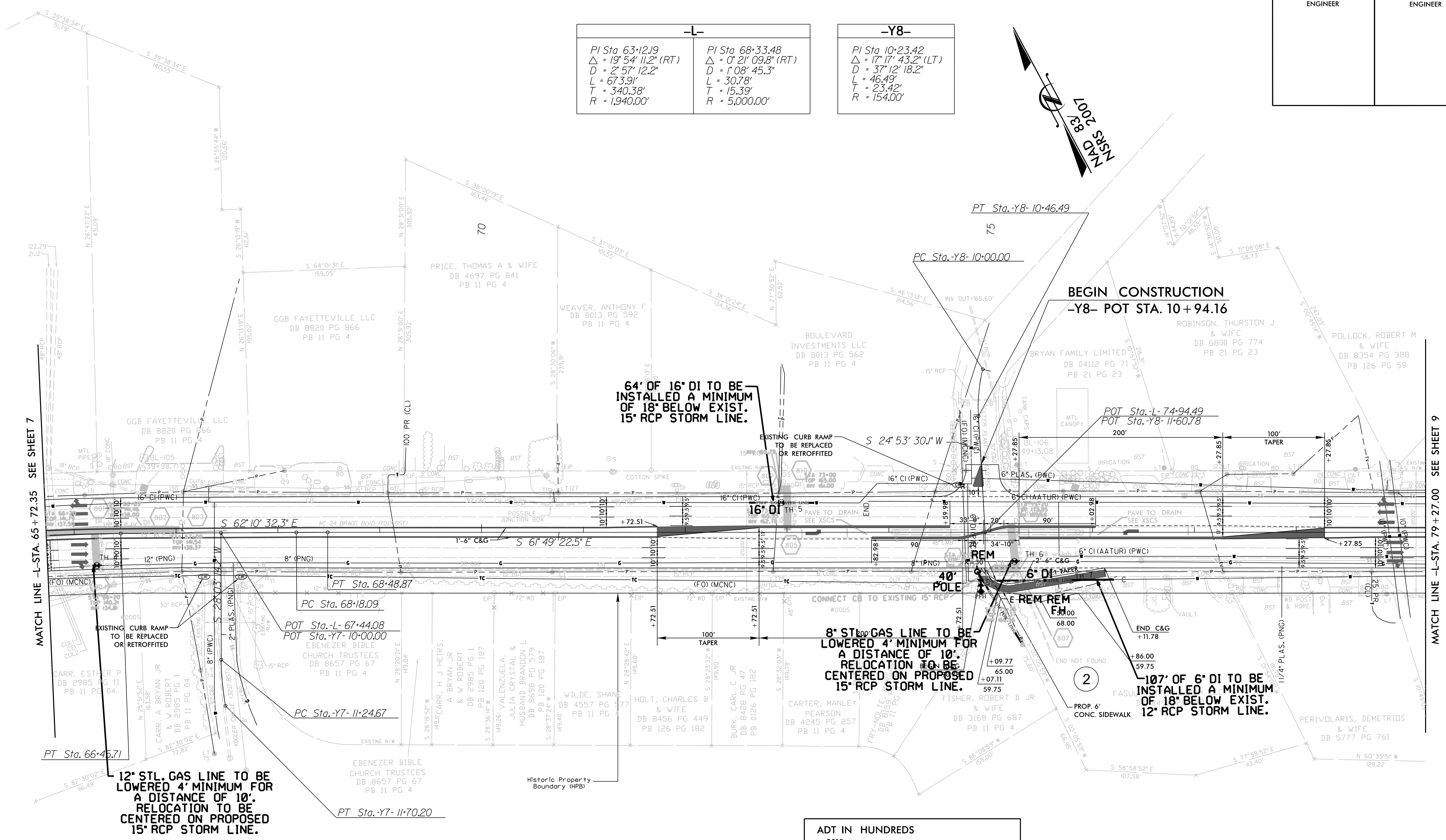
-Y8-	
PI Sta 10+23.42	PI Sta 10+23.42
$\Delta = 17^{\circ} 17' 43.2" (LT)$	$\Delta = 17^{\circ} 17' 43.2" (LT)$
D = 37' 12' 18.2"	D = 37' 12' 18.2"
L = 46.49'	L = 30.78'
T = 23.42'	T = 15.39'
R = 154.00'	R = 5,000.00'

-Y7-	
PI Sta 11+47.49	PI Sta 11+47.49
$\Delta = 10^{\circ} 26' 04.8" (LT)$	$\Delta = 10^{\circ} 26' 04.8" (LT)$
D = 22' 55' 05.9"	D = 22' 55' 05.9"
L = 45.53'	L = 45.53'
T = 22.83'	T = 22.83'
R = 250.00'	R = 250.00'



NOTE: SEE SHEET 15 FOR PROFILE
SEE SHEET 2B-2A FOR CROSS OVER DETAIL

REVISIONS



MATCH LINE -L- STA. 65+72.35 SEE SHEET 7

MATCH LINE -L- STA. 79+27.00 SEE SHEET 9