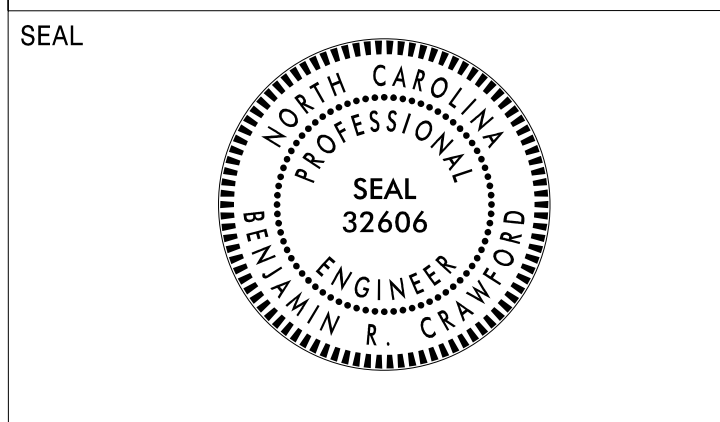
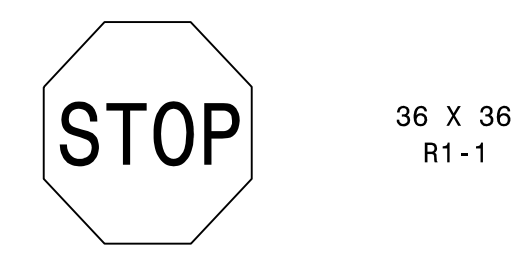


APPROVED: Benjamin R. Crawford  
DATE: 9/25/2015

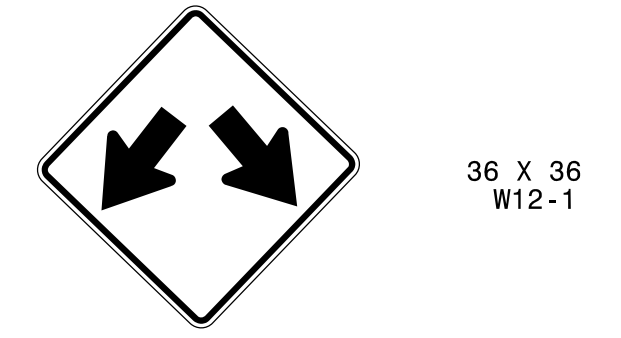


401 QUANTITY REQ'D 5



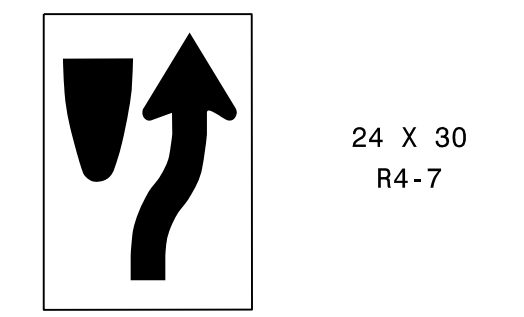
TWO "U" POST PER SIGN

406 QUANTITY REQ'D 6



ONE "U" POST PER SIGN

402 QUANTITY REQ'D 10



ONE "U" POST PER SIGN

407 QUANTITY REQ'D 6



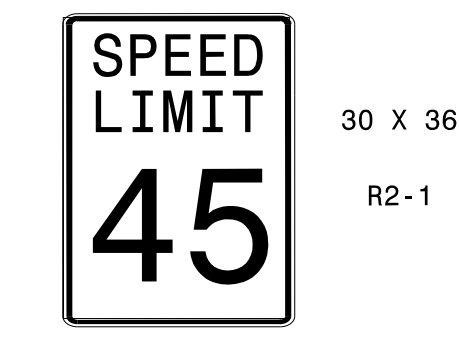
ONE "U" POST PER SIGN

403 QUANTITY REQ'D 18



MOUNT ABOVE SIGN 401  
IN 5 INSTALLATIONS

408 QUANTITY REQ'D 1



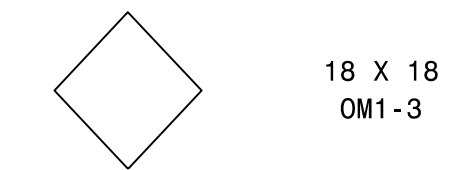
ONE "U" POSTS PER SIGN

404 QUANTITY REQ'D 2



TWO "U" POST PER SIGN

405 QUANTITY REQ'D 10



MOUNT BELOW SIGN 402  
IN 10 INSTALLATIONS

SYSTEMS ADMINISTRATION SUPERVISOR

TYPE "E" SIGNS